

MITSUBISHI 9900CX 1050kVA UPS DIRECT CABLE CONFIGURATION

CUSTOMER -

PROJECT NUMBER -

PROJECT LOCATION -

TABLE OF CONTENTS

SHEET NO.	TITLE
01	COVER SHEET
02	OUTLINE
03	BUSS CONNECTIONS
04	SYSTEM CONFIGURATION
05	BUSS CONNECTIONS (OPTIONAL)
06	SINGLE LINE
07	SINGLE LINE
08	
09	
10	
11	
12	
13	
14	
15	

REVISIONS
0. INITIAL RELEASE PER ECN 1316 Z.ZAJAC 5/29/2019

1. ADDED CONDUIT ENTRY TO SHEET 2; UPDATED PER ECN 1327 Z.ZAJAC 6/20/19


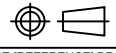
2. ADDED TYPE, RATING, AND HEAT REJECTION; UPDATED PER ECN 1370 Z.ZAJAC 7/11/2019

3. MODIFIED HMI ON SHEET 2 Z.ZAJAC 4/17/2020

4. ADDED NOTES FOR 100,000,474 INSTALLATION. REF. UD-100373. J.MOTT 8/14/2020

5. UPDATED FOR GATED TOP PANEL ON BYPASS MODULE J.PRY-SOCK 2/12/2020

6. REVISED CABLE KNOCK OUTS ON BYPASS FLOOR. J.MOTT 2/8/2024

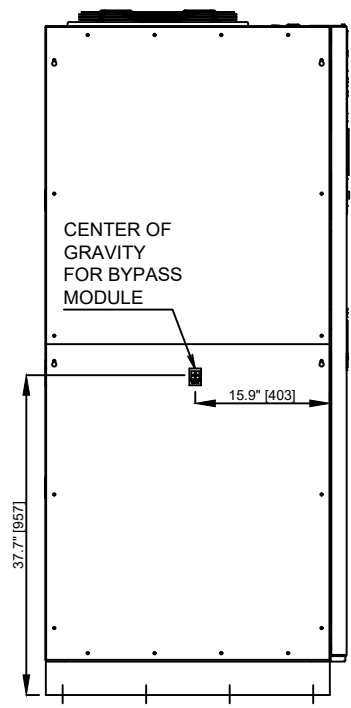
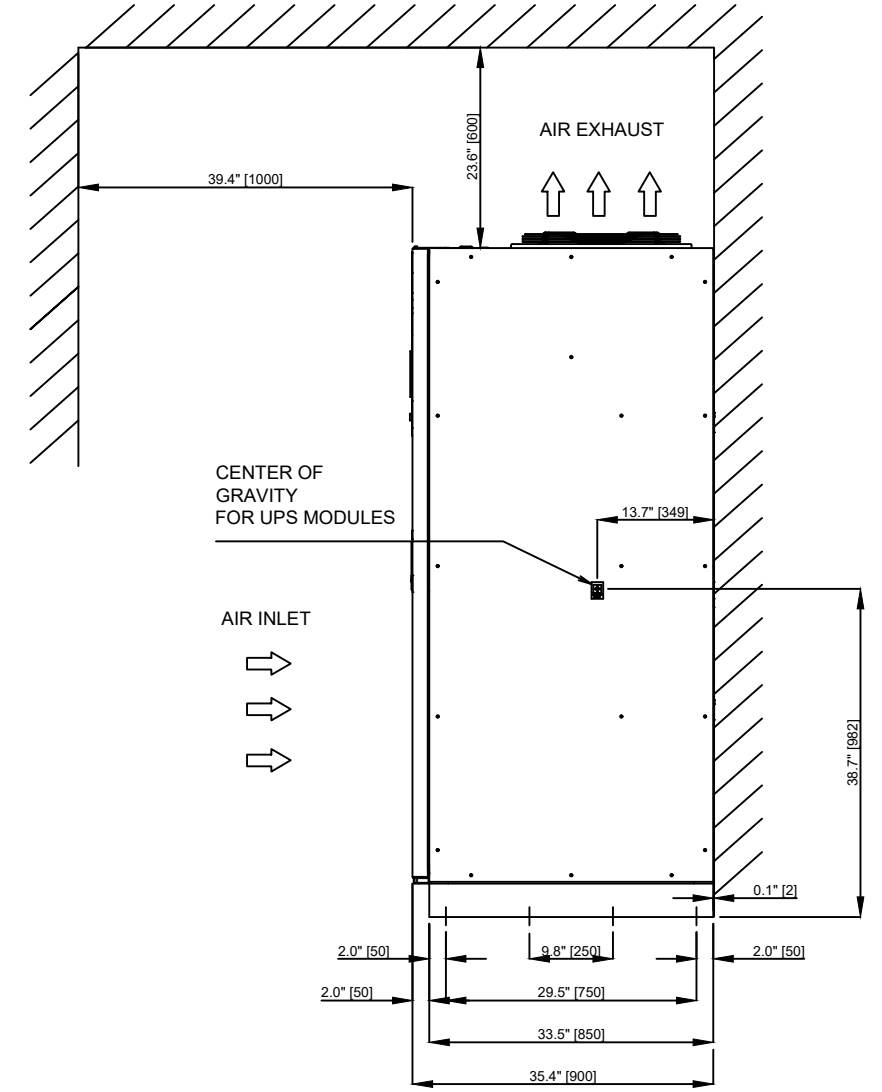
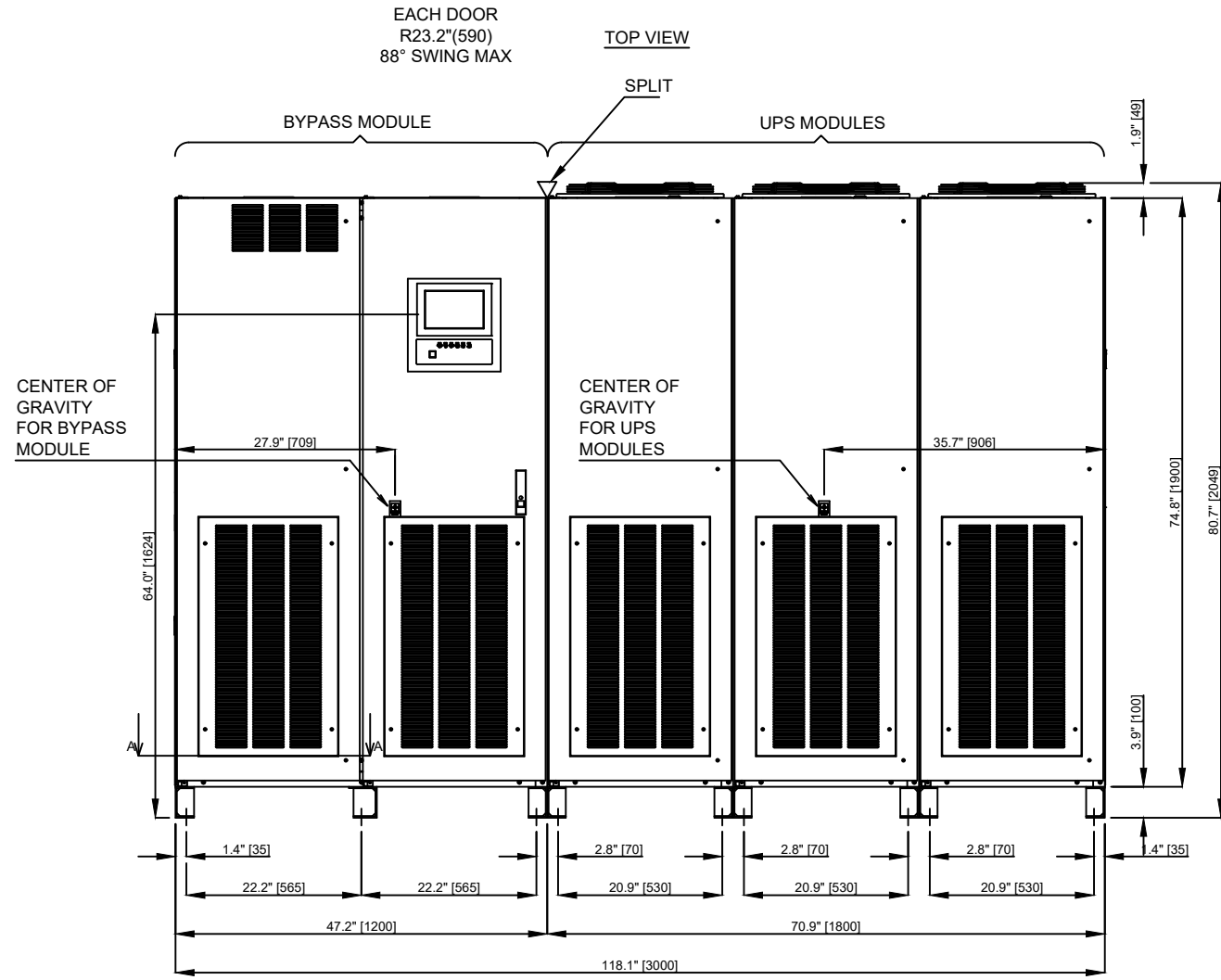
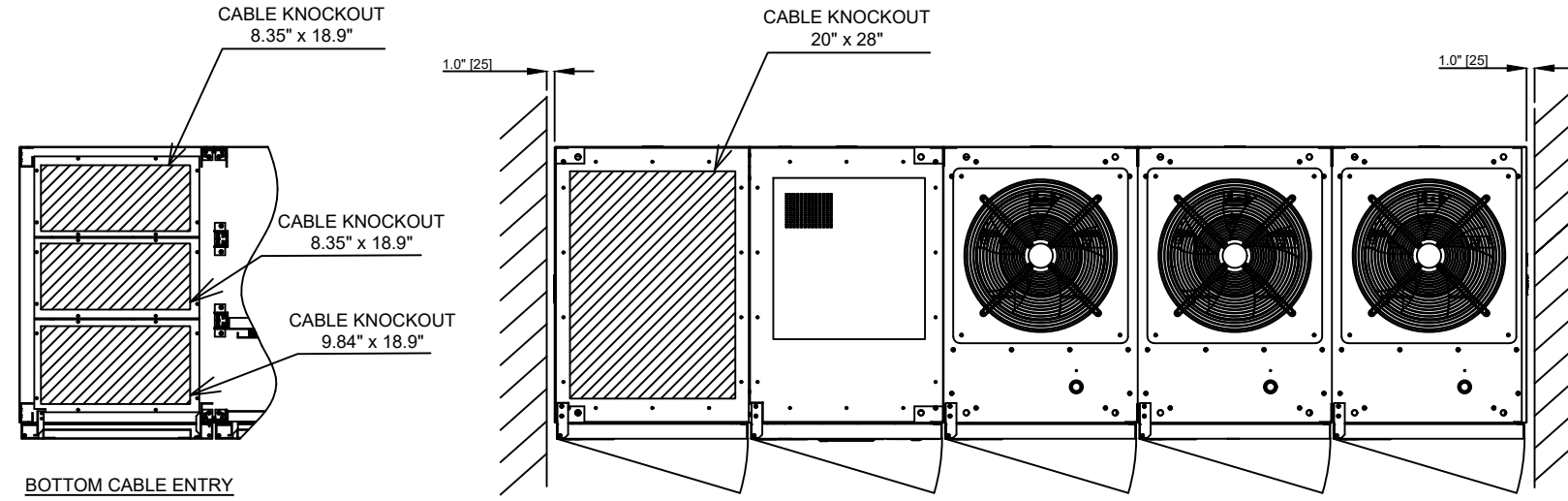
DIMENSIONS IN: IN [MM]	SCALE - NTS -	DRAFTER Z.ZAJAC	DATE 5/29/2019	 MITSUBISHI ELECTRIC
<small>PROPRIETARY</small> <small>This document is the property of Mitsubishi Electric Power Products, Inc. and contains proprietary and confidential information which must not be duplicated, used or disclosed other than as expressly authorized by Mitsubishi Electric Power Products, Inc.</small>		APPROVED N.RIEMER	DATE 5/29/2019	
				OUTLINE 9900CX 1050KVA
CORE [REFERENCE] DRAWING		DWG. NO. UD-100968	SHEET 1 OF 7	REV. 6

NOTES

1. DIMENSIONS ARE SHOWN IN INCHES" [MILLIMETERS].
2. SIDE SPACE ' 1" [25] ' IS NOT REQUIRED WHEN SIDECARS ARE USED.
3. CABINET SHOULD BE MAINTAINED UPRIGHT WITHIN ±15° DURING HANDLING.
4. EACH BASE HAS 2 OR 4 x 0.8" [20] DIAMETER HOLES TO FIX UPS ON THE GROUND.
5. APPROXIMATE WEIGHT

UPS MODULES 4,960LBS (2,250kg)
 BYPASS MODULE 1,653LBS (750kg)

TYPE: 9900CX
 RATING: 1050KVA
 HEAT REJECTION: 112.6kBTUs/HOUR (TYPICAL)



LEFT SIDE VIEW

FRONT VIEW

RIGHT SIDE VIEW

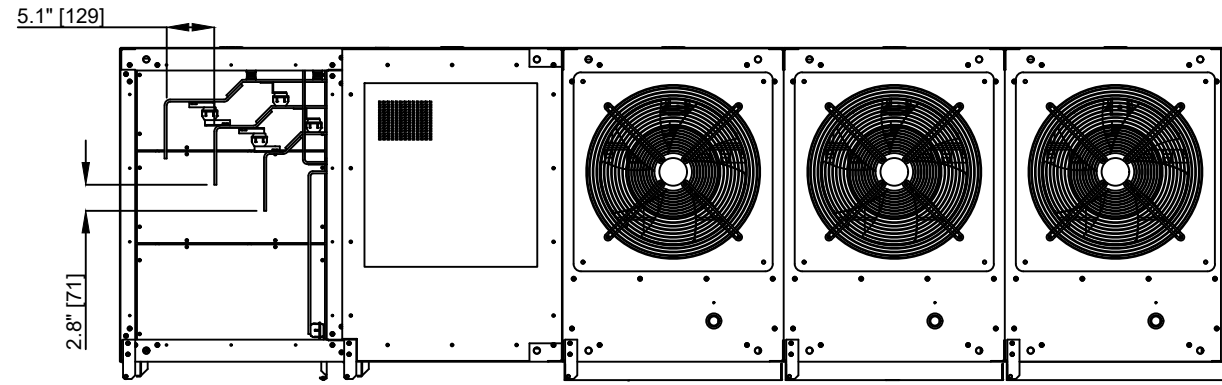
REVISIONS

0. INITIAL RELEASE PER ECN 1316 ZZA/JAC 5/29/2019
1. ADDED CONDUIT ENTRY 0 SHEET 2; UPDATED PER ECN 1327 ZZA/JAC 6/20/2019
2. ADDED TYPE, RATING, AND HEAT REJECTION; UPDATED PER ECN 1370 ZZA/JAC 7/11/2019
3. MODIFIED HMI ON SHEET 2 ZZA/JAC 4/17/2020
4. ADDED NOTES FOR 100,000,474 INSTALLATION. REF. UD-100373. J.MOTT 8/14/2020
5. UPDATED FOR GRATED TOP PANEL ON BYPASS MODULE J.PRY-SOCK 2/12/2020
6. REVISED CABLE KNOCK OUTS ON BYPASS FLOOR. J.MOTT 2/8/2024

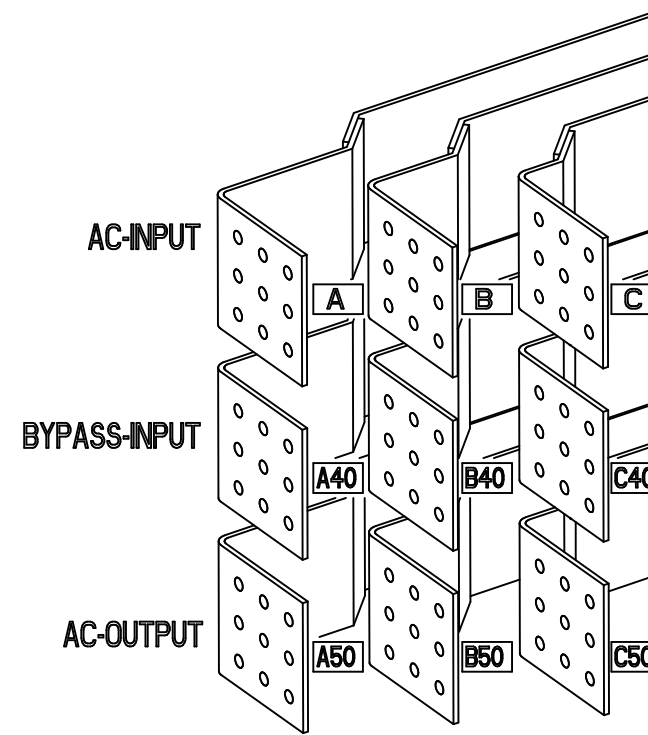
DIMENSIONS IN: IN [MM]	SCALE - NTS -	DRAFTER Z.ZAJAC	DATE 5/29/2019	<p>MITSUBISHI ELECTRIC</p>	
PROPRIETARY <small>This document is the property of Mitsubishi Electric Power Products, Inc. and contains proprietary and confidential information which must not be duplicated, used or disclosed other than as expressly authorized by Mitsubishi Electric Power Products, Inc.</small>		APPROVED N.RIEMER	DATE 5/29/2019		TITLE OUTLINE 9900CX 1050KVA
CORE [REFERENCE] DRAWING				DWG. NO. UD-100968	SHEET 2 OF 7 REV. 6

NOTES

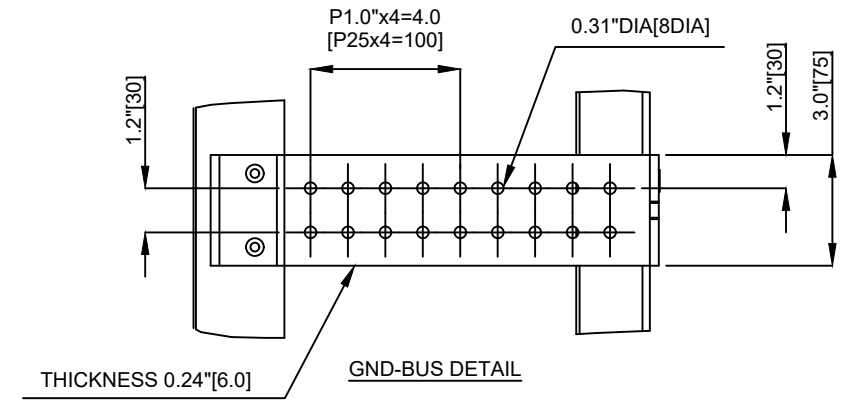
- EXTERNAL WIRES OR CABLES SHALL BE PROVIDED BY CUSTOMERS FOR AC-INPUT, DC-INPUT, BYPASS-INPUT, AND AC-OUTPUT. (OUT OF MITSUBISHI PROVISION.)
- ROTATION OF A, B, AND C PHASE IS CLOCKWISE.



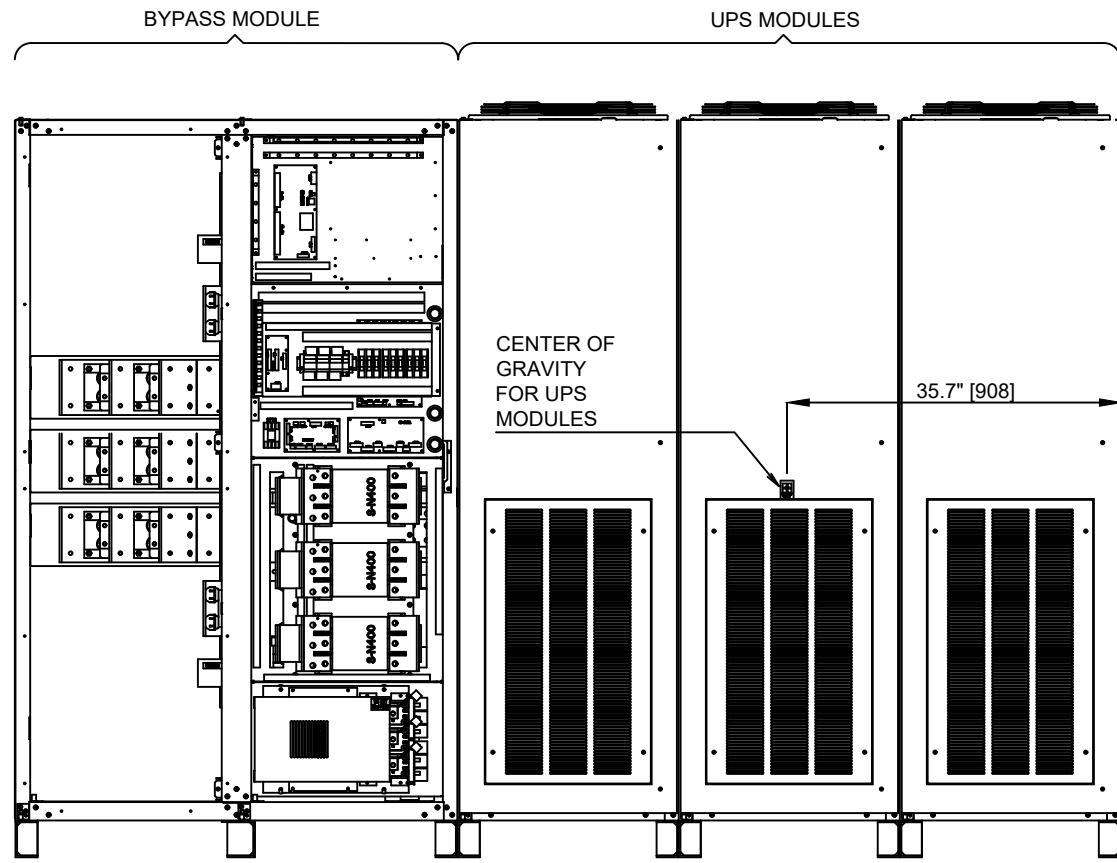
TOP VIEW



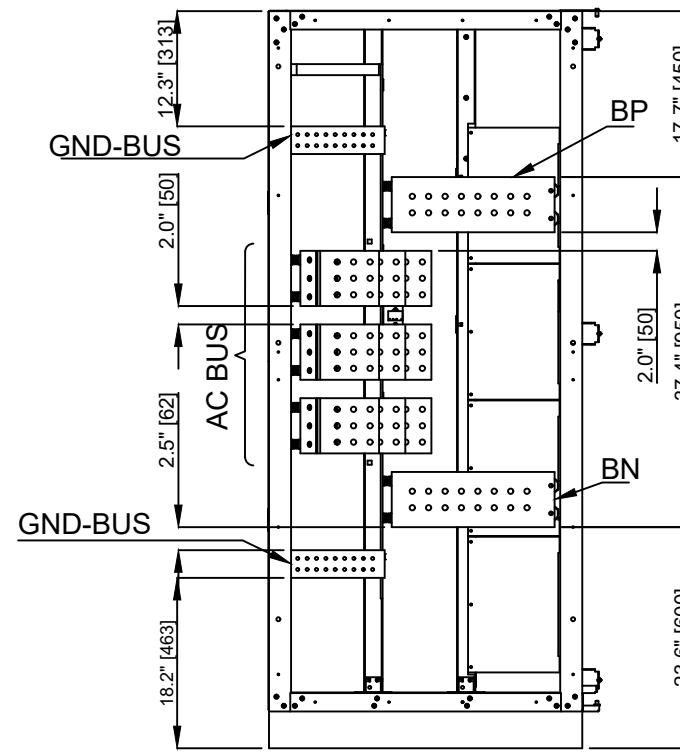
FRONT-LEFT-TOP VIEW OF AC BUSSES



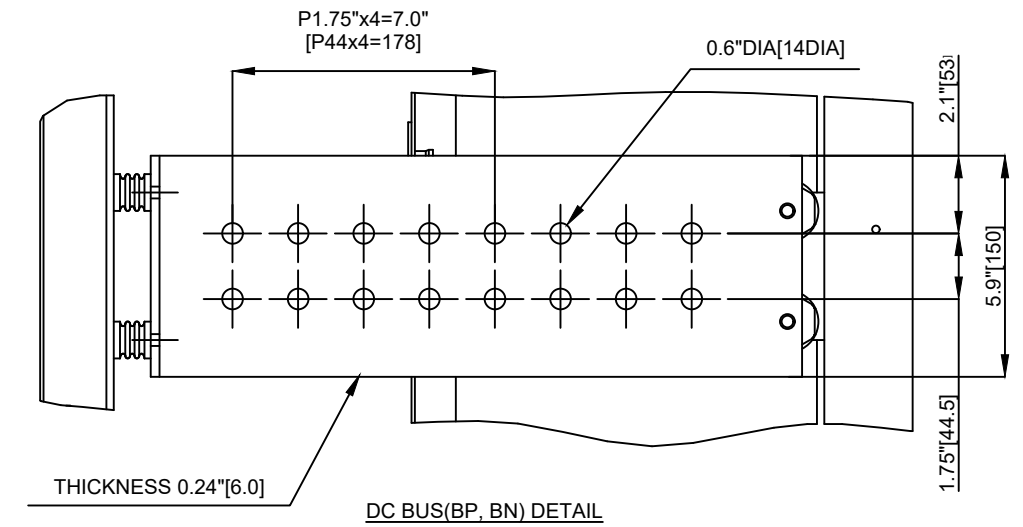
GND-BUS DETAIL



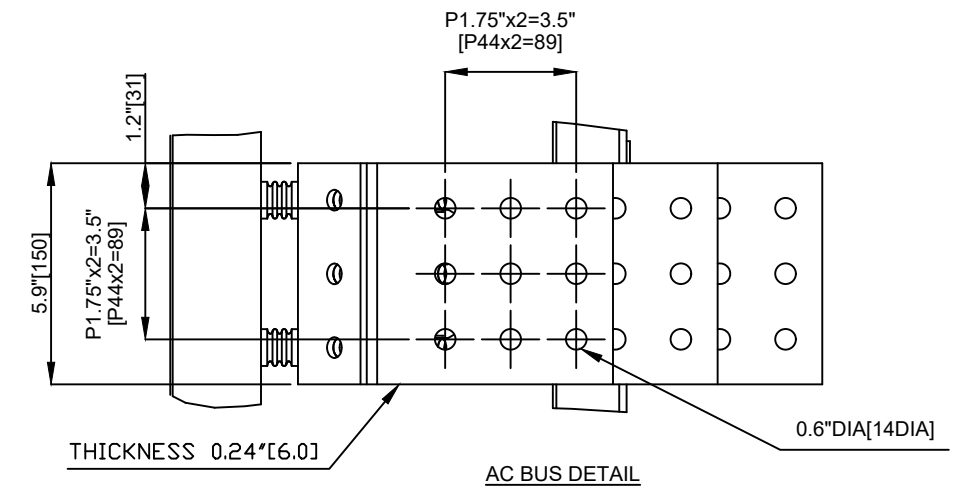
FRONT INSIDE VIEW



LEFT INSIDE VIEW



DC BUS (BP, BN) DETAIL



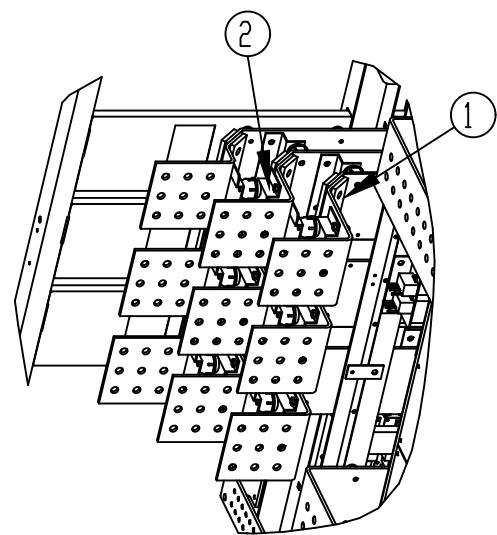
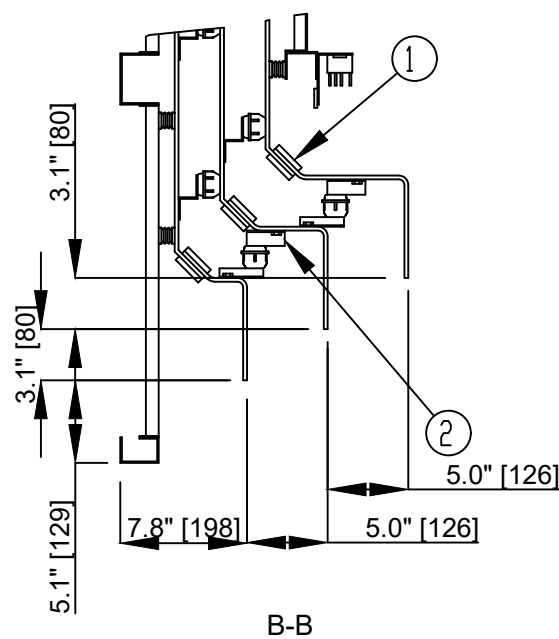
AC BUS DETAIL

REVISIONS
0. INITIAL RELEASE PER ECN 1316 ZZA/JAC 5/29/2019
1. ADDED CONDUIT ENTRY TO SHEET 2; UPDATED PER ECN 1327 ZZA/JAC 6/20/2019
2. ADDED TYPE, RATING, AND HEAT REJECTION; UPDATED PER ECN 1370 ZZA/JAC 7/11/2019
3. MODIFIED HMI ON SHEET 2 ZZA/JAC 4/17/2020
4. ADDED NOTES FOR 100.000.474 INSTALLATION. REF. UD-100373. J.MOTT 8/14/2020
5. UPDATED FOR GRATED TOP PANEL ON BYPASS MODULE J.PRY-SOCK 2/12/2020
6. REVISED CABLE KNOCK OUTS ON BYPASS FLOOR. J.MOTT 2/8/2024

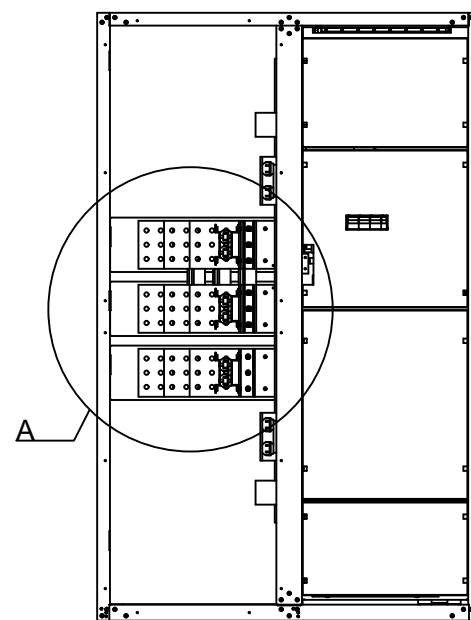
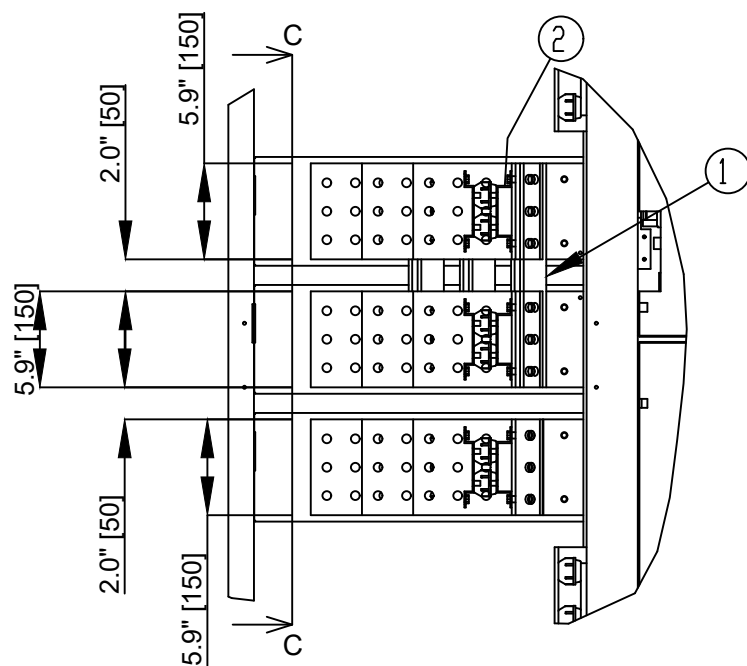
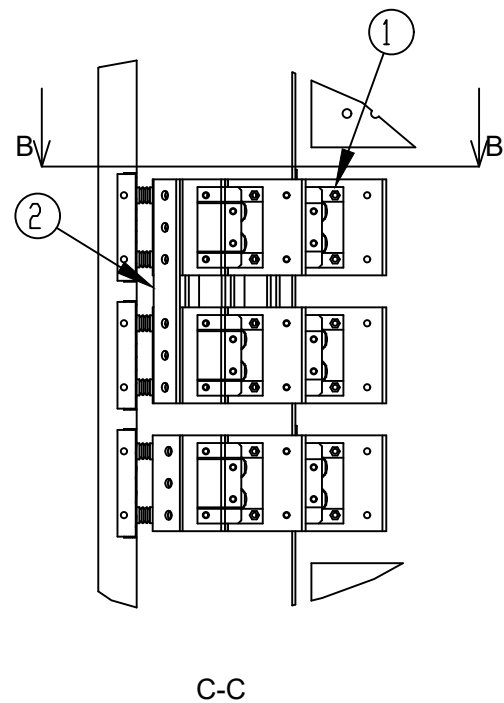
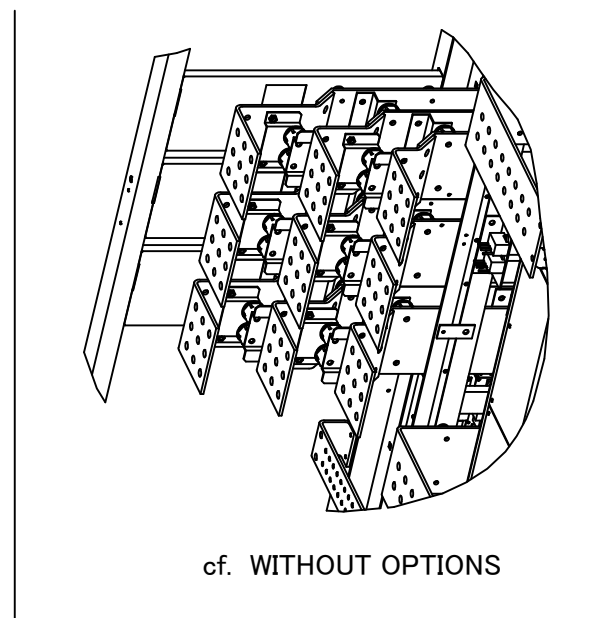
DIMENSIONS IN: IN [MM]	SCALE - NTS -	DRAFTER Z.ZAJAC	DATE 5/29/2019	<p>MITSUBISHI ELECTRIC</p>	
PROPRIETARY <small>This document is the property of Mitsubishi Electric Power Products, Inc. and contains proprietary and confidential information which must not be duplicated, used or disclosed other than as expressly authorized by Mitsubishi Electric Power Products, Inc.</small>		APPROVED N.RIEMER	DATE 5/29/2019		TITLE OUTLINE 9900CX 1050KVA
CORE [REFERENCE] DRAWING		DWG. NO.		SHEET 3 OF 7 UD-100968	REV. 6

NOTES:

1. OPTION BUSS PART TO MAKE AC-INPUT AND BYPASS-INPUT SHORT-CIRCUITED (6PCS) OPTION.
2. PANEL PART 100.000.474 REQUIRED TO REARRANGE DIRECTION OF AC TERMINALS (6PCS). USE UD-100373 INSTALLATION INSTRUCTIONS.



FRONT-LEFT-TOP VIEW OF AC BUSES

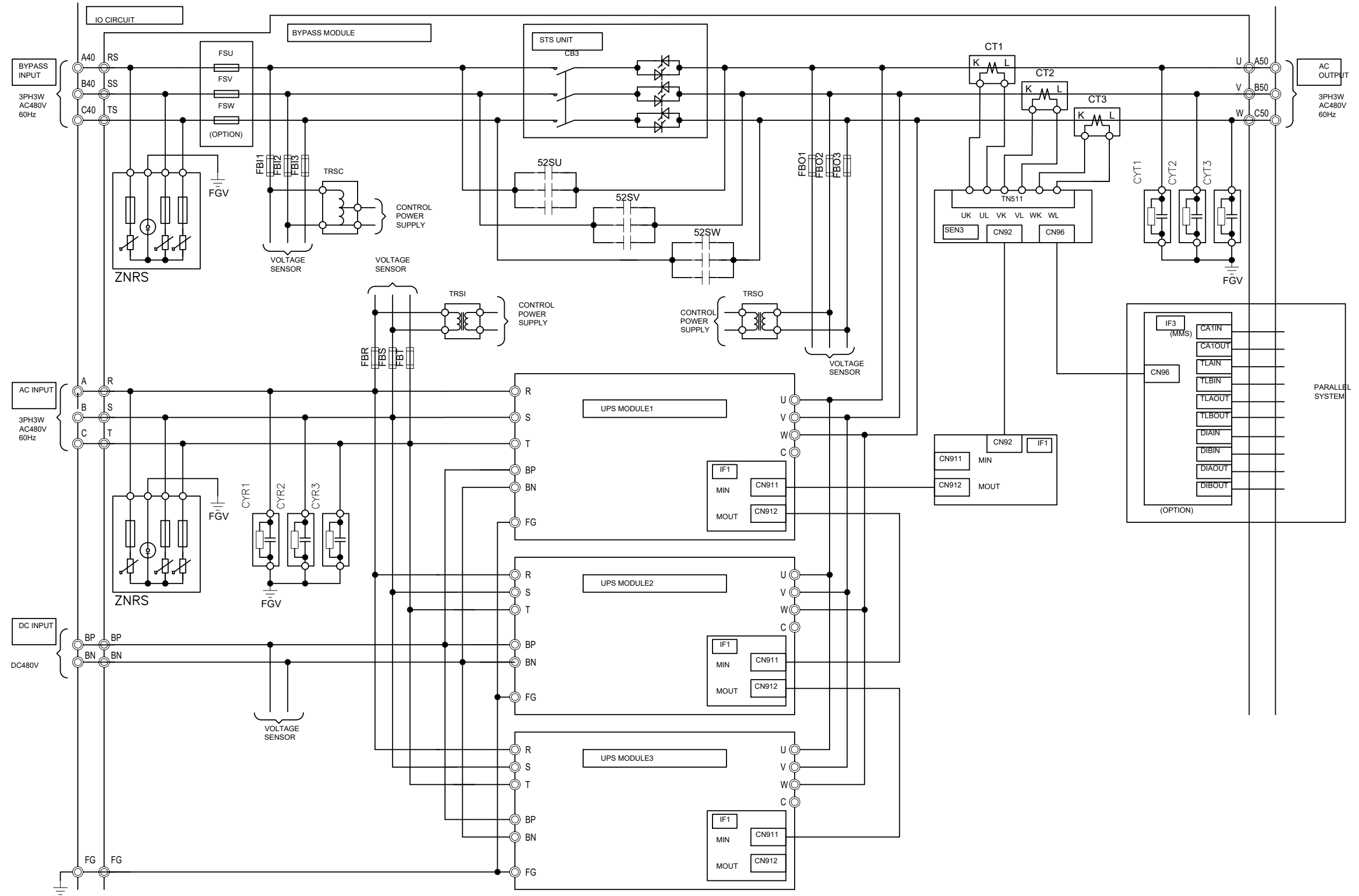


FRONT INSIDE VIEW OF BYPASS MODULE

REVISIONS

0. INITIAL RELEASE PER ECN 1316 ZZA/JAC 5/29/2019
1. ADDED CONDUIT ENTRY TO SHEET 2; UPDATED PER ECN 1327 ZZA/JAC 6/5/2019
2. ADDED TYPE, RATING, AND HEAT REJECTION; UPDATED PER ECN 1370 ZZA/JAC 7/11/2019
3. MODIFIED HMI ON SHEET 2 ZZA/JAC 4/17/2020
4. ADDED NOTES FOR 100.000.474 INSTALLATION. REF. UD-100373. J.MOTT 8/14/2020
5. UPDATED FOR GRATED TOP PANEL ON BYPASS MODULE J.PRY-SOCK 2/12/2020
6. REVISED CABLE KNOCK OUTS ON BYPASS FLOOR. J.MOTT 2/8/2024

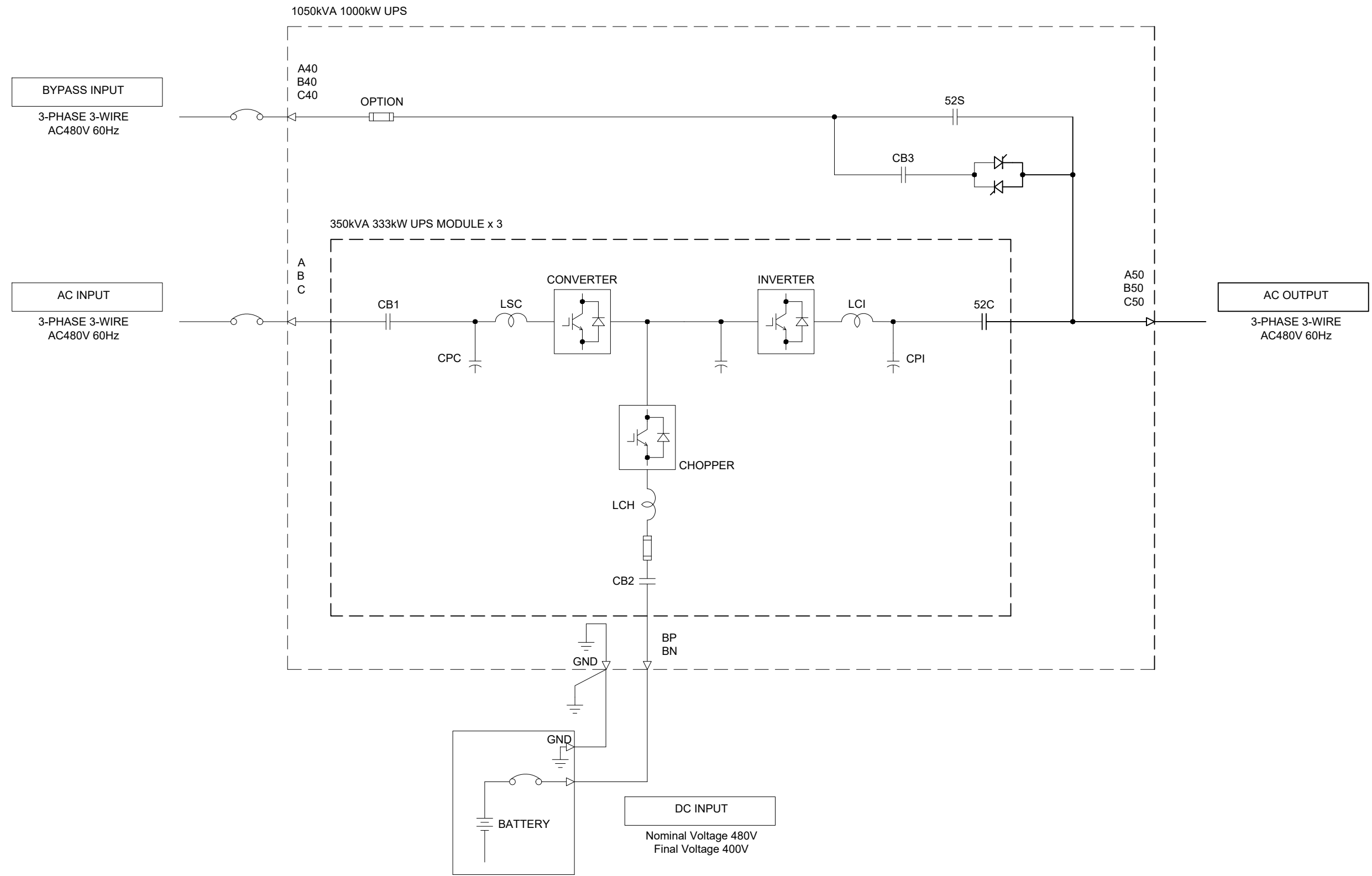
DIMENSIONS IN: IN [MM]	SCALE - NTS -	DRAFTER Z.ZAJAC	DATE 5/29/2019	<p>MITSUBISHI ELECTRIC</p>	
<p>PROPRIETARY</p> <p><small>This document is the property of Mitsubishi Electric Power Products, Inc. and contains proprietary and confidential information which must not be duplicated, used or disclosed other than as expressly authorized by Mitsubishi Electric Power Products, Inc.</small></p>		APPROVED N.RIEMER	DATE 5/29/2019		<p>TITLE</p> <p>OUTLINE</p> <p>9900CX 1050KVA</p>
		<p>CORE [REFERENCE] DRAWING</p>		<p>DWG. NO.</p> <p>UD-100968</p>	<p>SHEET 4 OF 7</p> <p>REV.</p> <p>6</p>



REVISIONS

- 0. INITIAL RELEASE PER ECN 1316 ZZA/JAC 5/29/2019
- 1. ADDED CONDUIT ENTRY TO SHEET 2; UPDATED PER ECN 1327 ZZA/JAC 6/5/2019
- 2. ADDED TYPE, RATING, AND HEAT REJECTION; UPDATED PER ECN 1370 ZZA/JAC 7/11/2019
- 3. MODIFIED HMI ON SHEET 2 ZZA/JAC 4/17/2020
- 4. ADDED NOTES FOR 100.000.474 INSTALLATION. REF. UD-100373. J.MOTT 8/14/2020
- 5. UPDATED FOR GRATED TOP PANEL ON BYPASS MODULE J.PRY-SOCK 2/12/2020
- 6. REVISED CABLE KNOCK OUTS ON BYPASS FLOOR. J.MOTT 2/8/2024

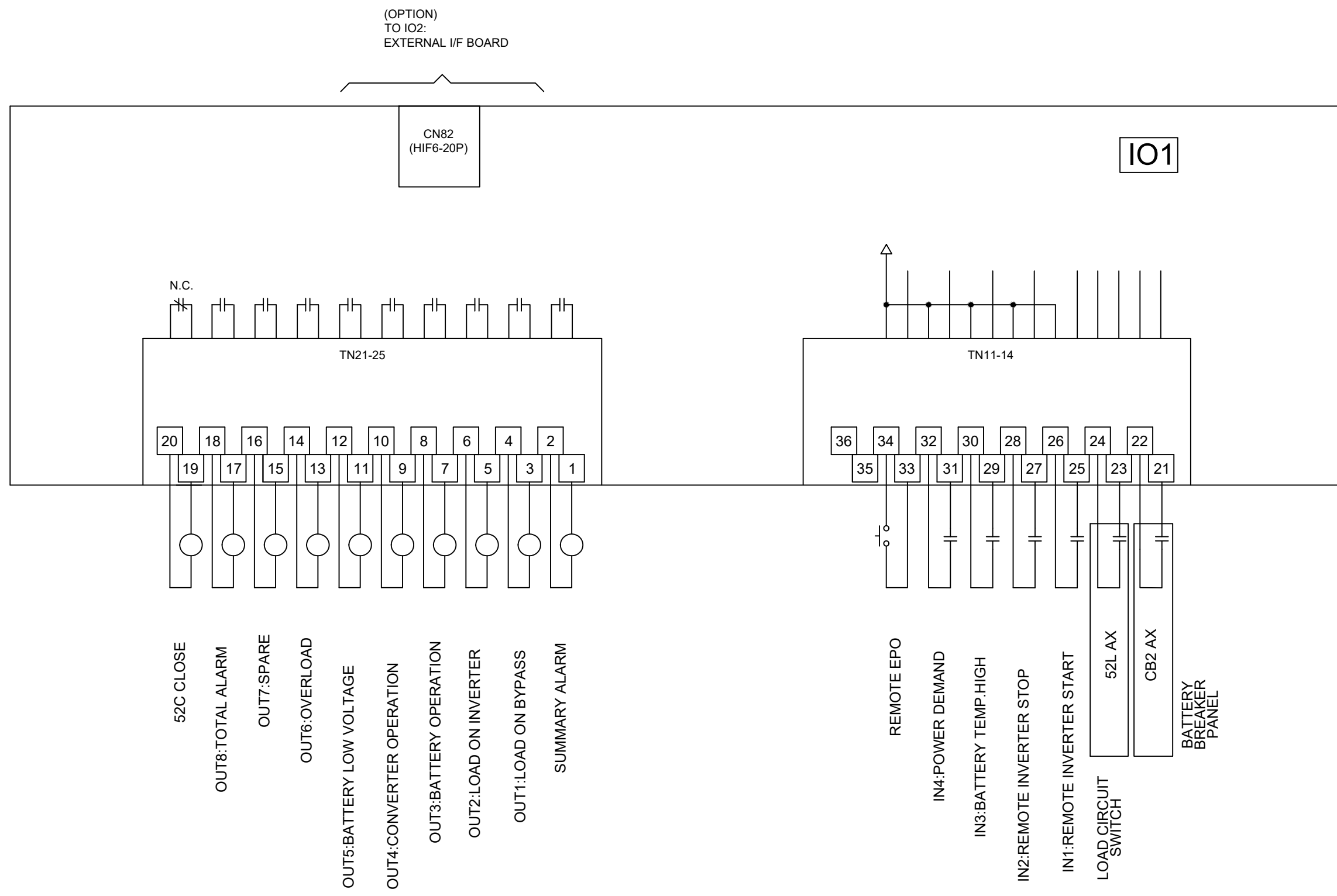
DIMENSIONS IN: IN [MM]	SCALE - NTS -	DRAFTER Z.ZAJAC	DATE 5/29/2019	MITSUBISHI ELECTRIC TITLE OUTLINE 9900CX 1050KVA
PROPRIETARY <small>This document is the property of Mitsubishi Electric Power Products, Inc. and contains proprietary and confidential information which must not be duplicated, used or disclosed other than as expressly authorized by Mitsubishi Electric Power Products, Inc.</small>		APPROVED N.RIEMER	DATE 5/29/2019	



REVISIONS

0. INITIAL RELEASE PER ECN 1316 ZZA/JAC 5/29/2019
1. ADDED CONDUIT ENTRY TO SHEET 2; UPDATED PER ECN 1327 ZZA/JAC 6/2/2019
2. ADDED TYPE, RATING, AND HEAT REJECTION; UPDATED PER ECN 1370 ZZA/JAC 7/11/2019
3. MODIFIED HMI ON SHEET 2 ZZA/JAC 4/17/2020
4. ADDED NOTES FOR 100,000,474 INSTALLATION. REF. UD-100373. J.MOTT 8/14/2020
5. UPDATED FOR GRATED TOP PANEL ON BYPASS MODULE J.PRY-SOCK 2/12/2020
6. REVISED CABLE KNOCK OUTS ON BYPASS FLOOR. J.MOTT 2/8/2024

DIMENSIONS IN: IN [MM]	SCALE: -NTS-	DRAFTER: Z.ZAJAC	DATE: 5/29/2019	<p>MITSUBISHI ELECTRIC</p>
<p>PROPRIETARY</p> <small>This document is the property of Mitsubishi Electric Power Products, Inc. and contains proprietary and confidential information which must not be duplicated, used or disclosed other than as expressly authorized by Mitsubishi Electric Power Products, Inc.</small>		APPROVED: N.RIEMER	DATE: 5/29/2019	
CORE [REFERENCE] DRAWING				<p>TITLE</p> <p>OUTLINE</p> <p>9900CX 1050KVA</p>
DWG. NO. UD-100968		SHEET 6 OF 7		REV. 6



REVISIONS

0. INITIAL RELEASE PER ECN 1316 ZZA/JAC 5/29/2019
1. ADDED CONDUIT ENTRY TO SHEET 2; UPDATED PER ECN 1327 ZZA/JAC 6/20/19
2. ADDED TYPE, RATING, AND HEAT REJECTION; UPDATED PER ECN 1370 ZZA/JAC 7/11/2019
3. MODIFIED HMI ON SHEET 2 ZZA/JAC 4/17/2020
4. ADDED NOTES FOR 100.000.474 INSTALLATION. REF. UD-100373. J.MOTT 8/14/2020
5. UPDATED FOR GRATED TOP PANEL ON BYPASS MODULE J.PRY-SOCK 2/12/2020
6. REVISED CABLE KNOCK OUTS ON BYPASS FLOOR. J.MOTT 2/8/2024

DIMENSIONS IN: IN [MM]	SCALE - NTS -	DRAFTER Z.ZAJAC	DATE 5/29/2019	<p>MITSUBISHI ELECTRIC</p>
<p>PROPRIETARY</p> <small>This document is the property of Mitsubishi Electric Power Products, Inc. and contains proprietary and confidential information which must not be duplicated, used or disclosed other than as expressly authorized by Mitsubishi Electric Power Products, Inc.</small>		APPROVED N.RIEMER	DATE 5/29/2019	
CORE [REFERENCE] DRAWING				<p>TITLE</p> <p>OUTLINE 9900CX 1050KVA</p>
DWG. NO. UD-100968		SHEET 7 OF 7		REV. 6