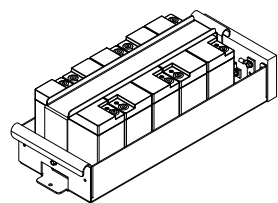
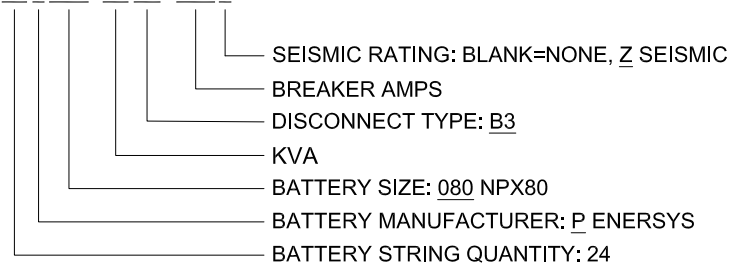


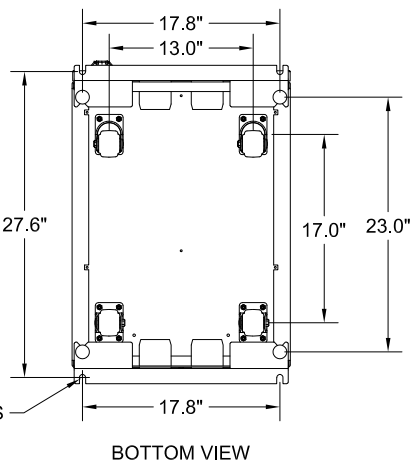
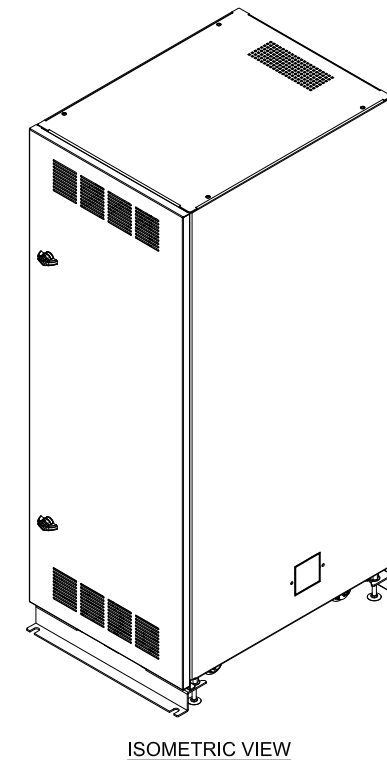
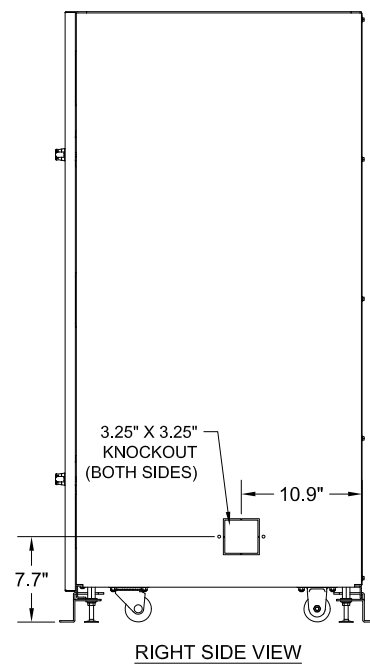
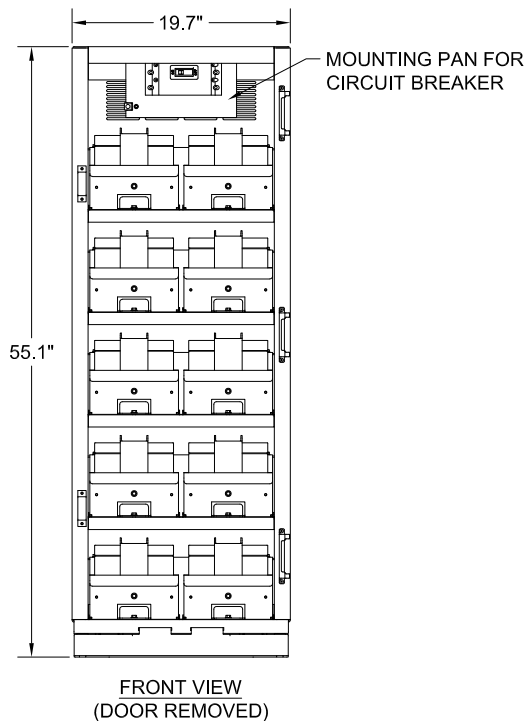
PART NUMBER BREAK DOWN

BC16-24P080-40B3-175Z



BATTERY PACK NOTES:

1. BATTERY PACKS SHIP LOOSE ON A SEPARATE PALLET FROM THE ENCLOSURE.
2. BATTERY PACKS ARE 75 - 90 LBS EACH AND REQUIRE (2) PERSON LIFT.
3. EACH BATTERY PACK IS FUSED WITH A MERSEN A50QS100-4 BOLT ON FUSE.

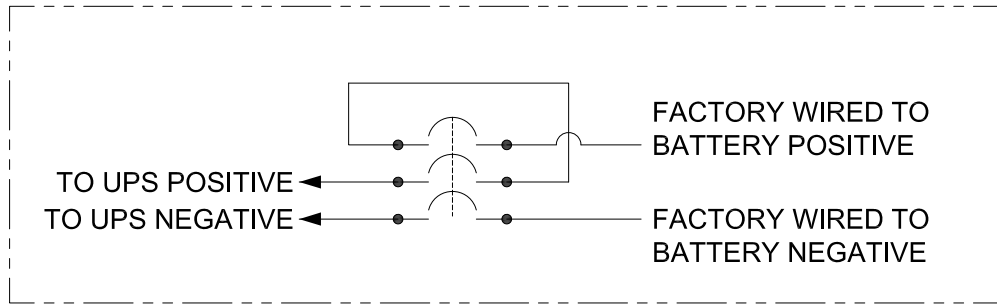


NOTES:

1. EMPTY CABINET WEIGHT (APPROXIMATE): 275 LBS.
2. WEIGHT WITH BATTERIES (APPROXIMATE): 826-1032 LBS.
3. FACTORY ASSEMBLED BATTERY CABINETS ARE UL AND CUL LISTED TO UL 1778 & CSA C22.2 NO. 107.3 (UL FILE NO. E212683).
4. NEMA 1 TYPE ENCLOSURE.
5. HEAVY GAUGE WELDED STEEL CONSTRUCTION.
6. POWDER COAT FINISH ON EXTERIOR AND INTERIOR OF CABINET.
7. BATTERY TRAYS CAN BE ACCESSED FROM THE FRONT OF THE CABINET.
8. THE CABINET IS SUPPLIED ON A PALLET WITH A HEAVY DUTY RAMP FOR EASY UNLOADING.
9. THE CABINET IS TO BE MOVED USING THE CABINET CASTERS. A SET OF RIGID CASTERS ARE LOCATED AT THE REAR AND A SET OF SWIVEL CASTERS ARE LOCATED AT THE FRONT. ADJUSTABLE LEVELING BOLTS ARE ALSO PROVIDED.
10. A MINIMUM CLEARANCE OF 36" IS REQUIRED AT THE FRONT OF THE CABINET.
11. A MINIMUM CLEARANCE OF 2" IS REQUIRED AT THE TOP AND THE REAR OF THE CABINET FOR OPTIMAL COOLING.
12. SEISMIC CODE "Z": (OPTIONAL CONFIGURATION) IS CERTIFIED TO THE INTERNATIONAL BUILDING CODE (IBC) AND THE CALIFORNIA BUILDING CODE (CBC) TO MEET SEISMIC DESIGN VATEGORY F, SS=2.0 AND IMPORTANCE FACTOR 1.5.

REVISIONS	REF. DWG. No.	APPROVED: PB	DATE 3/23/21	<p>MITSUBISHI ELECTRIC POWER PRODUCTS, INC. WARRENDALE, PA.</p>
	FILE LOCATION:			
	<small>THIS DRAWING CONTAINS PROPRIETARY AND CONFIDENTIAL INFORMATION OF C&C POWER, INC. AND HAS BEEN PREPARED FOR THE USE OF MITSUBISHI ELECTRIC POWER PRODUCTS, INC. FOR USE IN CONJUNCTION WITH EQUIPMENT PROVIDED BY C&C POWER, INC. UNAUTHORIZED REPRODUCTION, IN WHOLE OR IN PART, WITHOUT WRITTEN PERMISSION OF C&C POWER, INC. IS PROHIBITED. © 2013 C&C POWER, INC.</small>			
	DWG. No. 91416-M-S001-1	SHEET 1 OF 2	REV: 1	

BREAKER WIRING



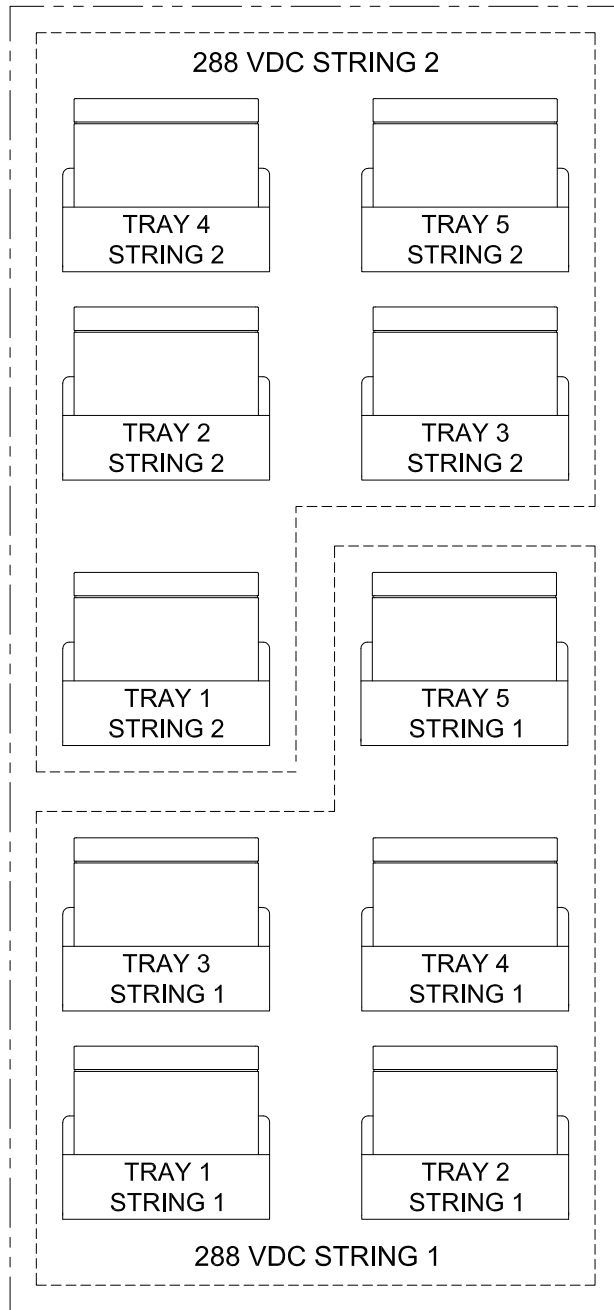
BREAKER & CABLE INFO

UPS SIZE	10 KVA	20 KVA	30 KVA	40 KVA
BREAKER SIZE AMPS	50A	90A	125A	175A
BREAKER TIE CABLE	(1) #6	(1) #6	(1) #4	(1) #2
INTERCELL CABLE	(1) #6	(1) #6	(1) #6	(1) #6

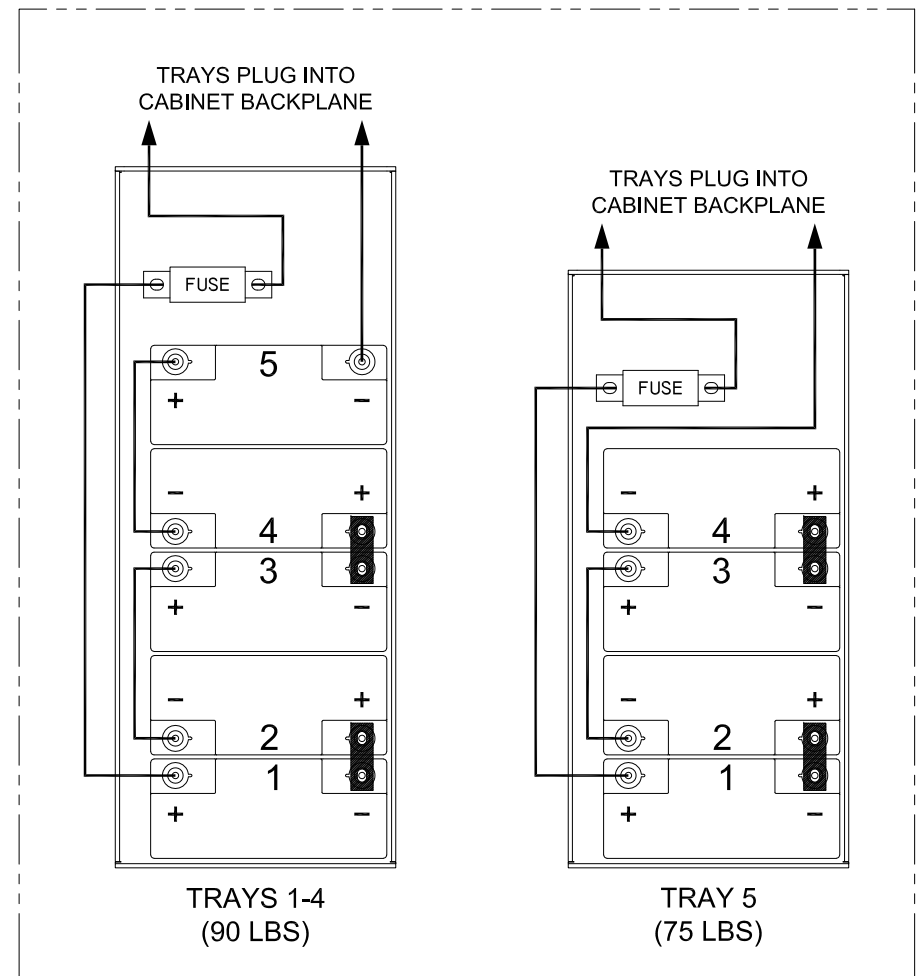
CABINET WEIGHTS

BATTERY SIZE	SYSTEM WEIGHT
80W (1 STRING)	826 LBS
80W (2 STRINGS)	1,032 LBS

BATTERY TRAY LAYOUT



BATTERY TRAY WIRING



NOTES:

- ALL INTERNAL WIRING IS UL LISTED MTW STYLE 600V 105C RATED EXTRA FLEXIBLE CABLE.
- BREAKER IS UL LISTED.
- BATTERY TRAY FUSES ARE UL RECOGNIZED, 500VDC RATED, MODEL A50QS100-4.
- BATTERY CABINETS WITH BREAKERS ARE SHIPPED WITH BREAKER IN THE OFF POSITION.
- GROUND LUG ACCEPTS (1) #14-1/0 AWG CABLE.
- FOR BATTERY TORQUE INFORMATION REFER TO THE SYSTEM DRAWING INCLUDED INSIDE CABINET OR SEE LABEL ON BATTERY CASE.
- FOR CIRCUIT BREAKER TORQUE INFORMATION REFER TO THE CIRCUIT BREAKER INFO LABEL LOCATED INSIDE THE CABINET DOOR.
- CABLES FROM BATTERY CABINET TO UPS SYSTEM ARE PROVIDED BY OTHERS.

REVISIONS

DIM. IN: INCHES	SCALE: NTS	DRAFTER: CH	DATE: 3/23/21	<p>MITSUBISHI ELECTRIC POWER PRODUCTS, INC. WARRENDALE, PA.</p>
<small>THIS DRAWING CONTAINS PROPRIETARY AND CONFIDENTIAL INFORMATION OF C&C POWER, INC. AND HAS BEEN PREPARED FOR THE USE OF MITSUBISHI ELECTRIC POWER PRODUCTS, INC. FOR USE IN CONJUNCTION WITH EQUIPMENT PROVIDED BY C&C POWER, INC. UNAUTHORIZED REPRODUCTION, IN WHOLE OR IN PART, WITHOUT WRITTEN PERMISSION OF C&C POWER, INC. IS PROHIBITED. © 2013 C&C POWER, INC.</small>				
REF. DWG. No.	APPROVED: PB	DATE: 3/23/21	TITLE: BC18 BATTERY CABINET	
FILE LOCATION:	91416-M-SD01-2		DWG No. SHEET 2 OF 2	REV: 1