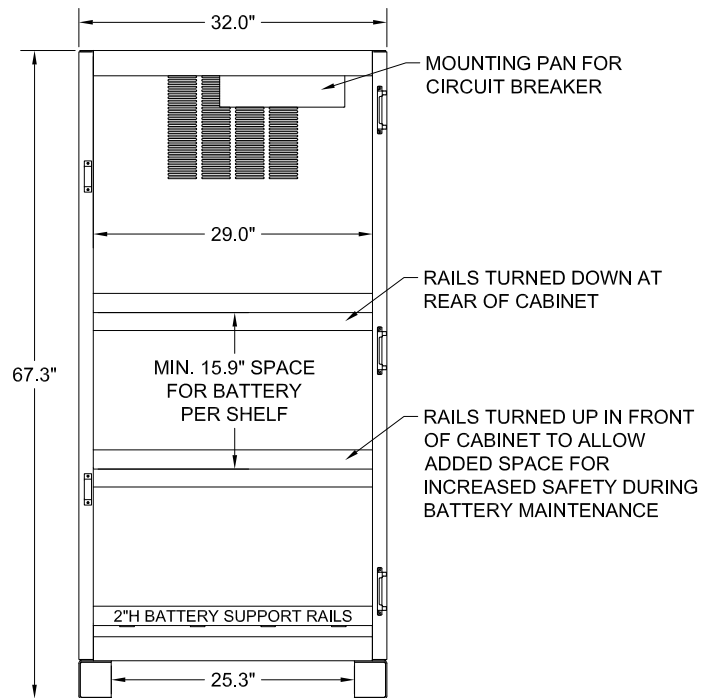


TOP VIEW

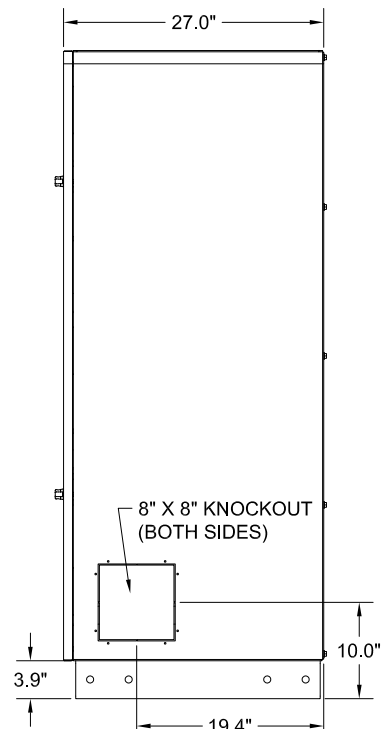
PART NUMBER BREAK DOWN

BC34-24E550-080B3-350Z

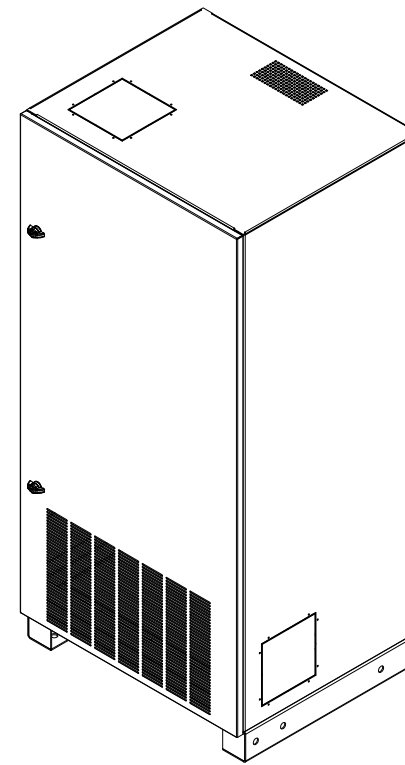
- SEISMIC RATING: BLANK=NONE, Z SEISMIC
- BREAKER AMPS
- DISCONNECT TYPE: B3
- KVA
- BATTERY SIZE: 200 HX205 300 HX300 350 HX330 400 HX400 500 HX505 550 HX540
- BATTERY MANUFACTURER: E ENERGYS
- BATTERY QUANTITY: 24



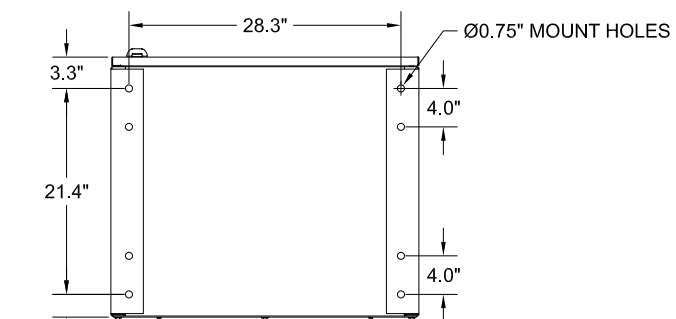
FRONT VIEW
(DOOR REMOVED)



RIGHT SIDE VIEW



ISOMETRIC VIEW



BOTTOM VIEW

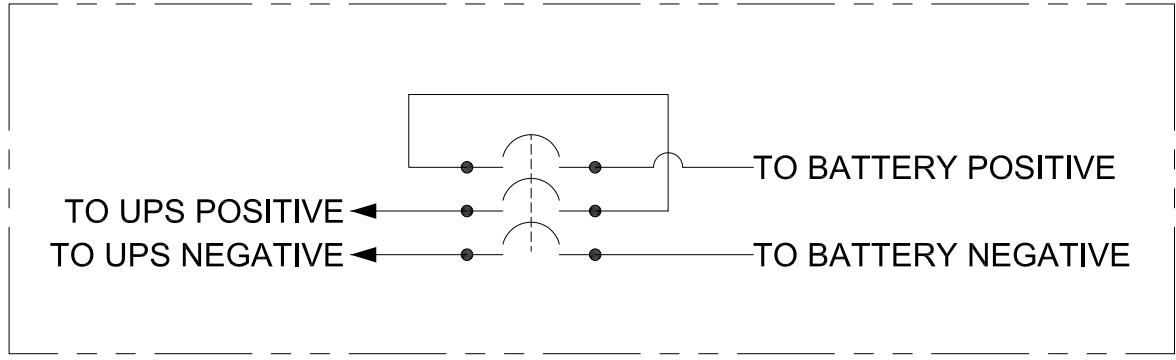
NOTES:

1. EMPTY CABINET WEIGHT (APPROXIMATE): 450 LBS.
2. WEIGHT WITH BATTERIES (APPROXIMATE): 1572-3084 LBS.
3. FACTORY ASSEMBLED BATTERY CABINETS ARE UL AND CUL LISTED TO UL 1778 & CSA C22.2 NO. 107.3 (UL FILE NO. E212683).
4. NEMA 1 TYPE ENCLOSURE.
5. HEAVY GAUGE WELDED STEEL CONSTRUCTION.
6. POWDER COAT FINISH ON EXTERIOR AND INTERIOR OF CABINET.
7. FOR EASE OF CONDUIT INSTALLATION A 16 GAUGE CONDUIT KNOCKOUT PLATE IS PROVIDED TO COVER A KNOCKOUT IN THE CABINET. (1) 8"x8" COVER PLATE IS PROVIDED.
8. BATTERIES CAN BE ACCESSED FROM THE FRONT AND REAR OF THE CABINET.
9. THE CABINET CAN BE MOVED WITH A PALLET JACK OR FORKLIFT USING THE PALLET JACK ACCESS POINT LOCATED AT THE FRONT OR REAR OF THE CABINET. THE CABINET CAN BE MOVED FROM THE SIDES WITH ROL-A-LIFT TYPE EQUIPMENT MOVER. THE CABINET IS ONLY TO BE LIFTED FROM THE BOTTOM.
10. A MINIMUM CLEARANCE OF 36" IS REQUIRED AT THE FRONT OF THE CABINET.
11. A MINIMUM CLEARANCE OF 2" IS REQUIRED AT THE TOP AND THE REAR OF THE CABINET FOR OPTIMAL COOLING.
12. SEISMIC CODE "Z": (OPTIONAL CONFIGURATION) IS CERTIFIED TO THE INTERNATIONAL BUILDING CODE (IBC) AND THE CALIFORNIA BUILDING CODE (CBC) TO MEET SEISMIC DESIGN VEGATORY F, SS=2.0 AND IMPORTANCE FACTOR 1.5.

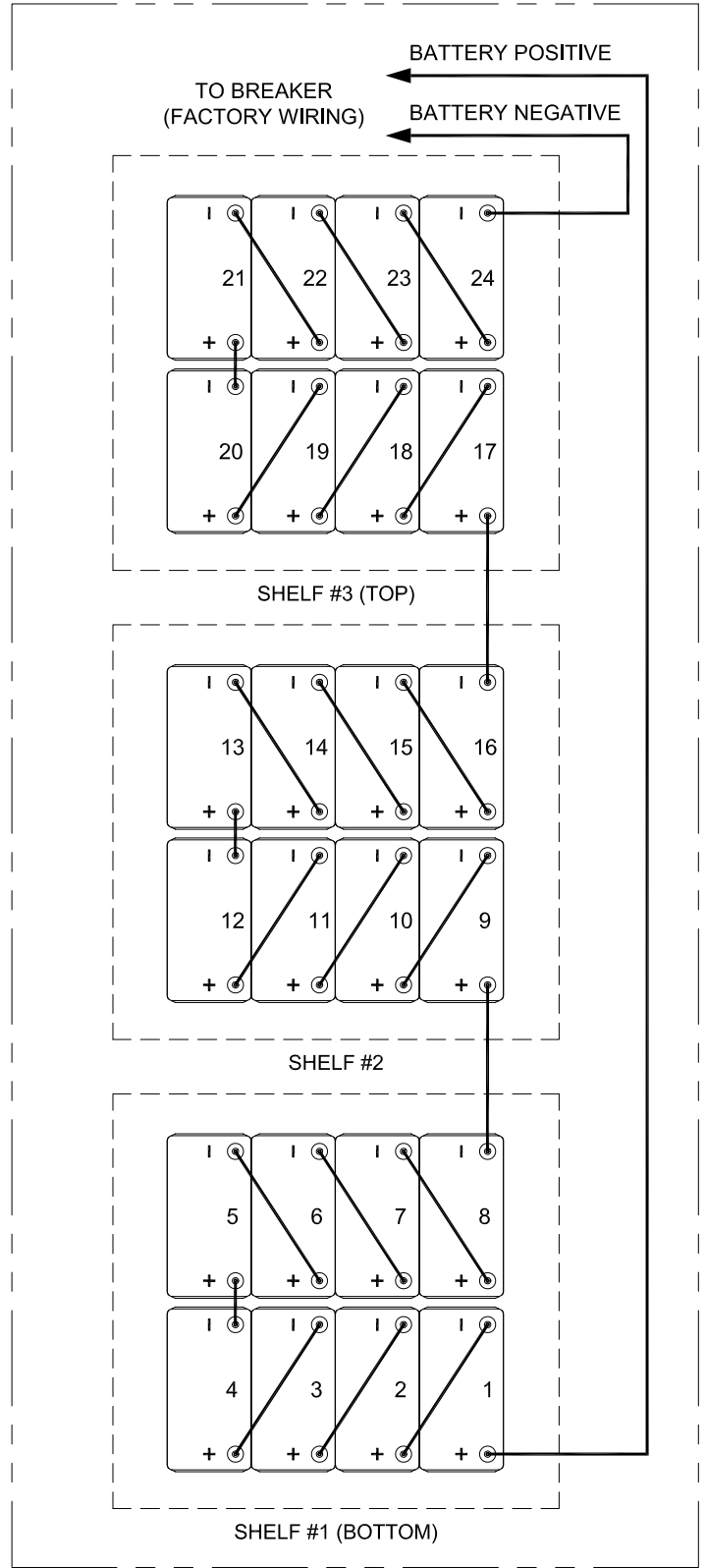
REVISIONS

DIM. IN: INCHES SCALE: NTS DRAFTER: CH CHECKED: PB ENGINEER: CH APPROVED: PB REF. DWG. No. FILE LOCATION:	DATE: 3/29/21 DATE: 3/29/21 DATE: 3/29/21 DATE: 3/29/21	MITSUBISHI ELECTRIC POWER PRODUCTS, INC. WARRENDALE, PA. TITLE: BC34 BATTERY CABINET DWG No. 91434-M-SD01-1 SHEET 1 OF 2	REV: 2
--	--	---	--------

BREAKER WIRING



TYPICAL BATTERY WIRING



BREAKER & CABLE INFO				
UPS SIZE	50 KVA	60 KVA	70 KVA	80 KVA
BREAKER SIZE AMPS	225A	250A	300A	350A
BREAKER TIE CABLE	(1) 1/0	(1) 1/0	(1) 2/0	(1) 4/0
INTERCELL CABLE	(1) 1/0	(1) 1/0	(1) 2/0	(1) 4/0

CABINET WEIGHTS	
BATTERY SIZE	SYSTEM WEIGHT
200W	1,572 LBS
300W	1,980 LBS
330W	2,244 LBS
400W	2,460 LBS
500W	3,012 LBS
540W	3,084 LBS

NOTES:

- ALL INTERNAL WIRING IS UL LISTED MTW STYLE 600V 105C RATED CLASS K STRANDING EXTRA FLEXIBLE CABLE.
- BREAKER IS UL LISTED.
- BATTERY CABINETS WITH BREAKERS ARE SHIPPED WITH BREAKER IN THE OFF POSITION.
- BREAKERS ARE PROVIDED WITH A POLYCARBONATE SHIELD TO COVER ACCESS TO LIVE PARTS.
- GROUND LUG ACCEPTS (1) #14-1/0 AWG CABLE.
- BATTERY CABINETS ARE SHIPPED WITH BATTERY JUMPER REMOVED TO BREAK STRING VOLTAGE FOR ADDED SAFETY IN SHIPPING. JUMPER MUST BE CONNECTED DURING CABINET INSTALLATION. REFER TO THE SYSTEM DRAWING INCLUDED INSIDE CABINET TO IDENTIFY THE JUMPER THAT IS REMOVED.
- FOR BATTERY TORQUE INFORMATION REFER TO THE SYSTEM DRAWING INCLUDED INSIDE CABINET OR SEE LABEL ON BATTERY CASE.
- FOR CIRCUIT BREAKER TORQUE INFORMATION REFER TO THE CIRCUIT BREAKER INFO LABEL LOCATED INSIDE THE CABINET DOOR.
- CABLES FROM BATTERY CABINET TO UPS SYSTEM ARE PROVIDED BY OTHERS.

REVISIONS

DIM. IN: INCHES	SCALE: NTS	DRAFTER: CH	DATE: 3/29/21	<p>MITSUBISHI ELECTRIC POWER PRODUCTS, INC. WARRENDALE, PA.</p>
<small>THIS DRAWING CONTAINS PROPRIETARY AND CONFIDENTIAL INFORMATION OF C&C POWER, INC. AND HAS BEEN PREPARED FOR THE USE OF MITSUBISHI ELECTRIC POWER PRODUCTS, INC. FOR USE IN CONJUNCTION WITH EQUIPMENT PROVIDED BY C&C POWER, INC. UNAUTHORIZED REPRODUCTION, IN WHOLE OR IN PART, WITHOUT WRITTEN PERMISSION OF C&C POWER, INC. IS PROHIBITED. © 2012 C&C POWER, INC.</small>		CHECKED: PB	DATE: 3/29/21	
		ENGINEER: CH	DATE: 3/29/21	
REF. DWG. No.	APPROVED: PB	DATE: 3/29/21	DWG No. SHEET 2 OF 2	REV: 2
FILE LOCATION:			91434-M-S001-2	

EATON SERIES C BREAKER SIZING						
BREAKER SIZE AMPS	15-100A	110-225A	250A	300-350A	400A	450A
AIC @ 250VDC	50K	50K	50K	50K	50K	50K
AIC @ 600 VDC	42K	42K	42K	42K	42K	35K
OUTPUT LUG SIZE	(1) #14-1/0	(1) #4-4/0	(1) #4-350	(1) 250-500	(2) 3/0-250	(2) #4-4/0

BREAKER SIZE AMPS	500A	600A	700A	800A
AIC @ 250VDC	50K	50K	50K	50K
AIC @ 600 VDC	35K	35K	35K	35K
OUTPUT LUG SIZE	(2) 3/0-350	(2) 400-500	(2) #1-500	(3) 3/0-400

EATON SERIES C BREAKER ACCESSORY CONTACT RATING				
VOLTAGE	125 VDC	250 VDC	600 VAC	
AUXILIARY SWITCH	.5 AMPS**	.25 AMPS**	6 AMPS	
BELL ALARM	.5 AMPS**	.25 AMPS**	6 AMPS	
** NON-INDUCTIVE LOAD.				

EATON SERIES G BREAKER SIZING				
BREAKER SIZE AMPS	70-250A	300-350A	400A	500-600A
AIC @ 250VDC	35K	22K	22K	22K
AIC @ 600 VDC	35K	35K	35K	35K
OUTPUT LUG SIZE	(1) #8-350	(1) #3-500	(1) 500-750	(2) #2-500


EATON SERIES G BREAKER ACCESSORY CONTACT RATING					
VOLTAGE	125 VDC	250 VDC	230 VAC	400 VAC	600 VAC
AUXILIARY SWITCH	0.5 AMP**	0.15 AMPS**	6 AMPS	3 AMPS	0.25 AMPS
BELL ALARM	0.5 AMP**	0.15 AMPS**	6 AMPS	3 AMPS	0.25 AMPS
** NON-INDUCTIVE LOAD.					

SIEMENS SERIES VL BREAKER SIZING						
BREAKER SIZE AMPS	100-250A	300-400A	500-600A	700-800A	900A-1200A	
AIC @ 250VDC	30K	30K	30K	22K	22K	
AIC @ 600 VDC	42K	65K	65K	65K	65K	
OUTPUT LUG SIZE	(1) #4-350	(2) 3/0-250	(2) #2-600	(3) 1/0-500	(4) 1/0-500	

SIEMENS BREAKER ACCESSORY CONTACT RATING				
VOLTAGE	300 VDC	300 VAC	600 VAC	
AUXILIARY SWITCH	1 AMPS**	10 AMPS	10 AMPS	
BELL ALARM	1 AMPS**	10 AMPS	10 AMPS	
** NON-INDUCTIVE LOAD.				

SQUARE-D POWERPACT BREAKER SIZING				
BREAKER SIZE AMPS	100-175A	200-250A	300-600A	
AIC @ 500 VDC	50K	50K	50K	
OUTPUT LUG SIZE	(1) #4-4/0	(1) 3/0-350	(2) 2/0-500	

SQUARE-D POWERPACT BREAKER ACCESSORY CONTACT RATING					
VOLTAGE	24 VDC	48 VDC	110-250 VDC	24-690 VAC	
AUXILIARY SWITCH	6 AMPS**	2.5 AMPS**	0.6 AMPS**	6 AMPS	
BELL ALARM	6 AMPS**	2.5 AMPS**	0.6 AMPS**	6 AMPS	
** NON-INDUCTIVE LOAD.					

REVISIONS	REF. DWG. No.	FILE LOCATION:	DIM. IN: INCHES	SCALE: NTS	DRAFTER: CH	DATE: 3/29/21	 MITSUBISHI ELECTRIC POWER PRODUCTS, INC. WARRENDALE, PA.	
	THIS DRAWING CONTAINS PROPRIETARY AND CONFIDENTIAL INFORMATION OF C&C POWER, INC. AND HAS BEEN PREPARED FOR THE USE OF MITSUBISHI ELECTRIC POWER PRODUCTS, INC. FOR USE IN CONJUNCTION WITH EQUIPMENT PROVIDED BY C&C POWER, INC. UNAUTHORIZED REPRODUCTION, IN WHOLE OR IN PART, WITHOUT WRITTEN PERMISSION OF C&C POWER, INC. IS PROHIBITED. © 2013 C&C POWER, INC.		CHECKED: PB	DATE: 3/29/21	ENGINEER: CH	DATE: 3/29/21		TITLE: DC CIRCUIT BREAKER DATA SHEET
	APPROVED: PB	DATE: 3/29/21	DWG No.	1 OF 1	REV: 10			
			CD DATA					