

MITSUBISHI SUMMIT 500kVA UPS DIRECT CABLE CONFIGURATION


CUSTOMER -
PROJECT NUMBER -
PROJECT LOCATION -

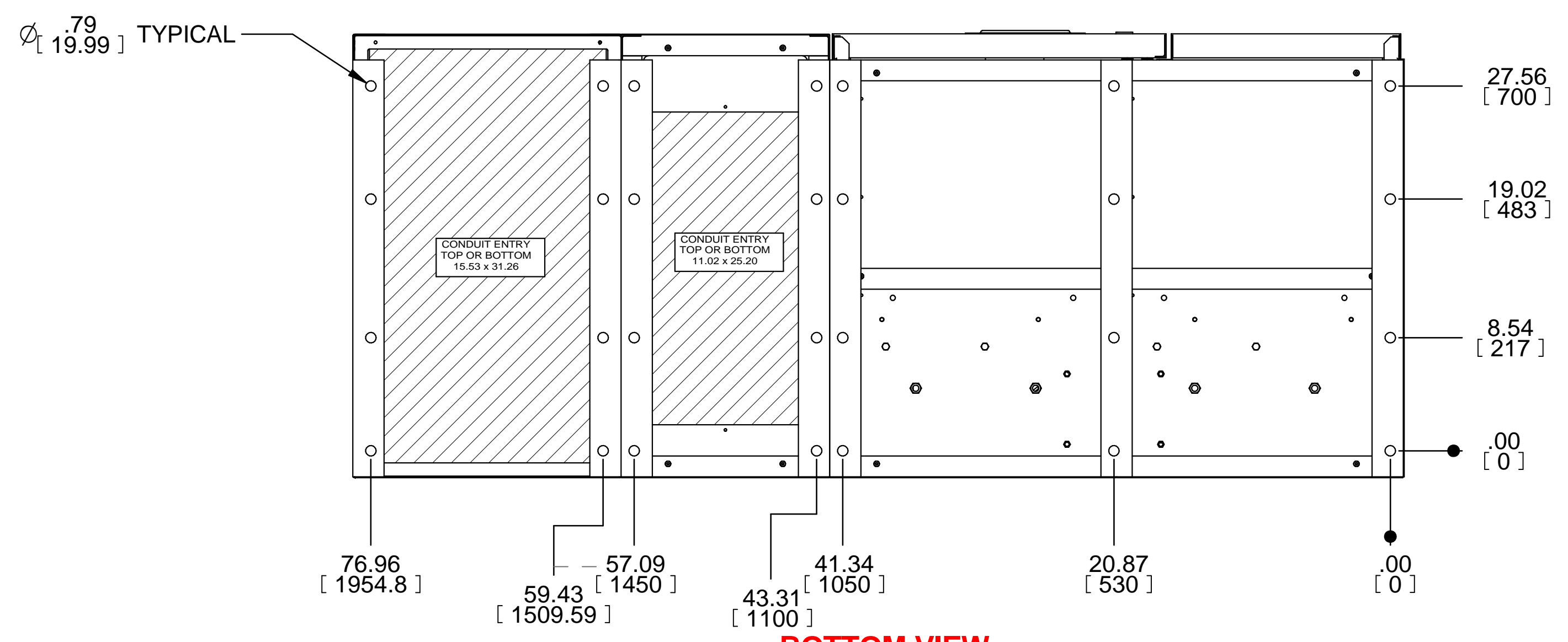
TABLE OF CONTENTS

SHEET NO.	TITLE
01	COVER SHEET
02	UPS ONE-LINE 1 DIAGRAM
03	UPS ONE-LINE 2 DIAGRAM
04	UPS ONE LINE 3 DIAGRAM
05	SINGLE LINE DIAGRAM
06	SYSTEM CONFIGURATION
07	EXTERNAL SIGNAL TERMINAL BLOCK
08	
09	
10	
11	
12	
13	
14	
15	

REVISIONS

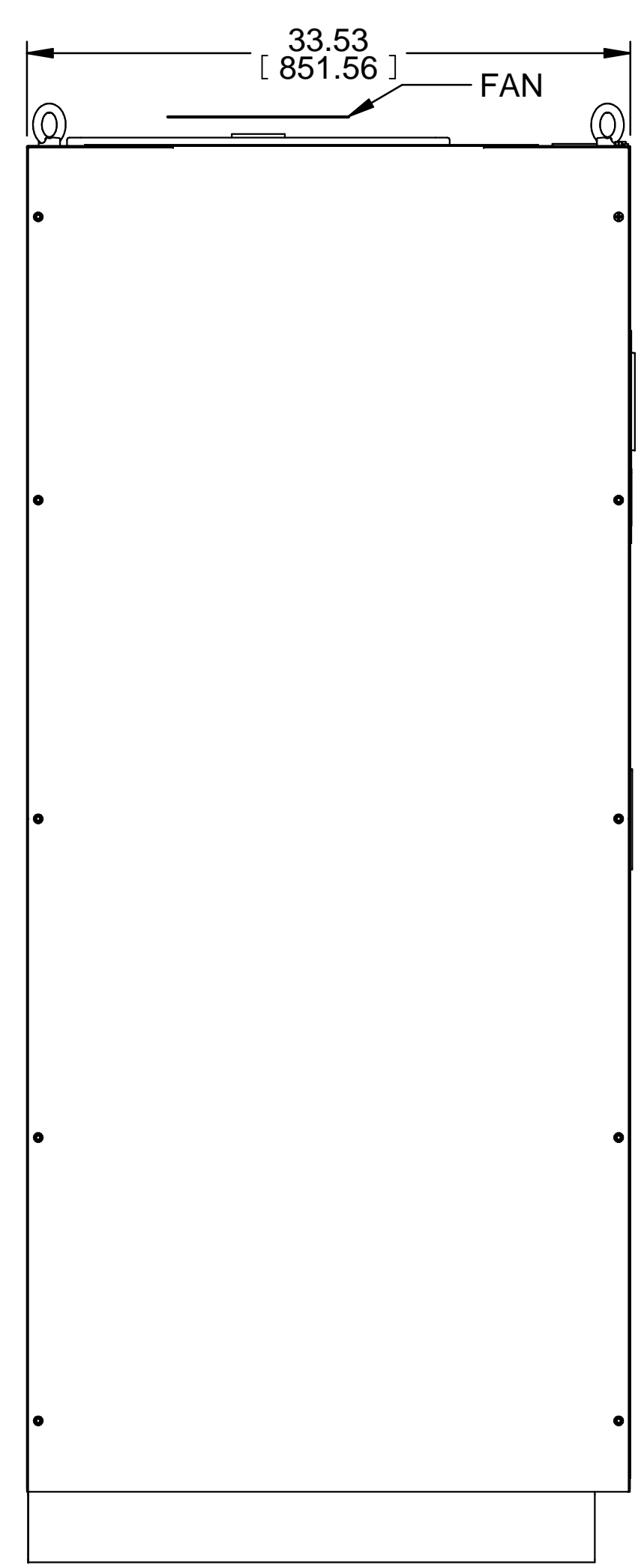
- 0 INITIAL RELEASE
7/20/16 GDU
- 1 REVISED DRAWING TO
SHOW UPS
4/11/17 NR
- 2. ADDED HEAT
REJECTION, KC*, AND
"mm" VALUES; UPDATED
PER ECN 1386
Z:ZAJMC 7/11/19

DIM. IN:	SCALE: NTS	DRAFTER: G. JOHNSTON	DATE: 08/13/15	 MITSUBISHI ELECTRIC
<small>PROPRIETARY THIS DOCUMENT IS PROPERTY OF MITSUBISHI ELECTRIC POWER PRODUCTS, INC. AND CONTAINS PROPRIETARY AND CONFIDENTIAL INFORMATION WHICH MUST NOT BE DUPLICATED, USED OR DISCLOSED OTHER THAN AS EXPRESSLY AUTHORIZED BY MITSUBISHI ELECTRICAL POWER PRODUCTS, INC.</small>		CHECKED: N. RIEMER	DATE: 08/13/15	
REF. DWG. NO.:		ENGINEER: K. BEAMER	DATE: 08/13/15	
		APPROVED: K. BEAMER	DATE: 08/13/15	
FILE LOCATION:		TITLE: SUMMIT 500KVA UPS DIRECT CABLE CONFIGURATION		SHEET 1 OF 7 DWG NO.: UD-100540
		REV: 2		

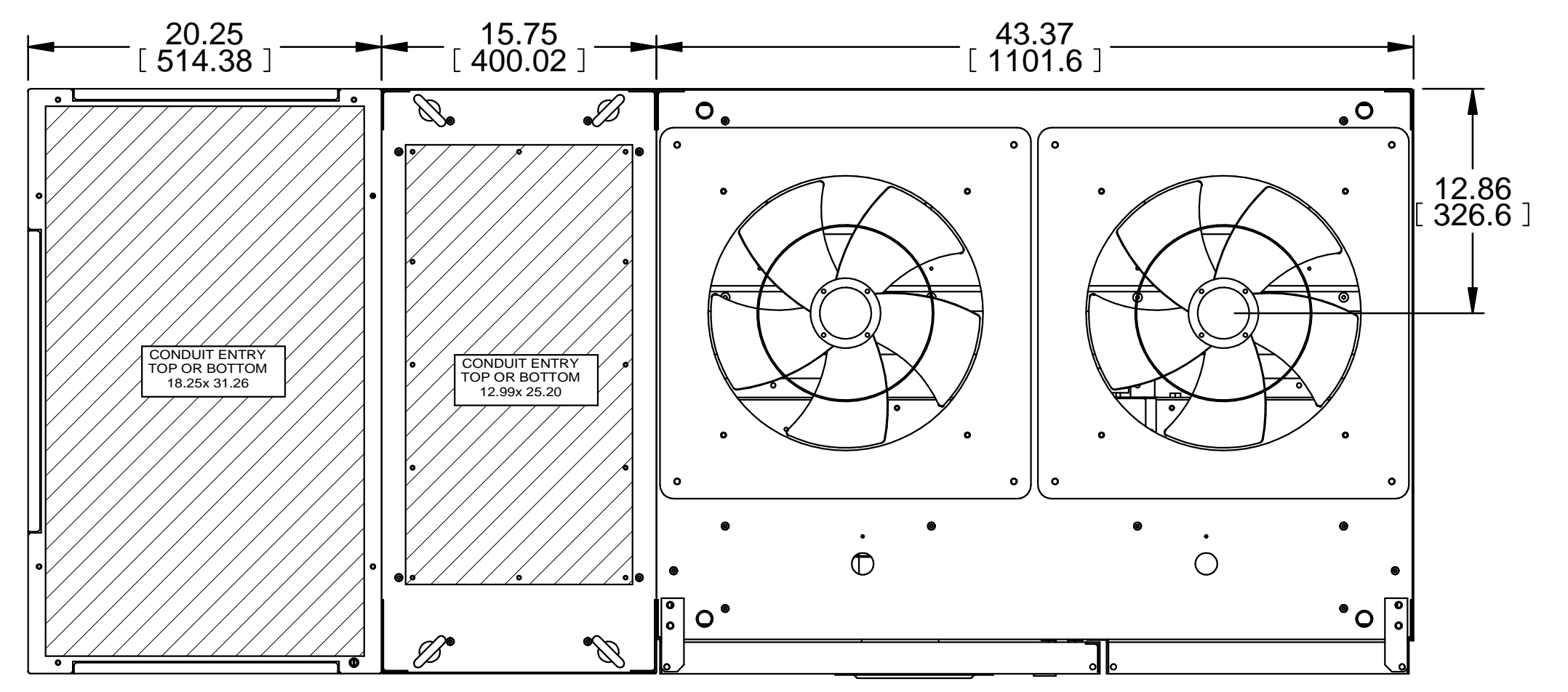


BOTTOM VIEW

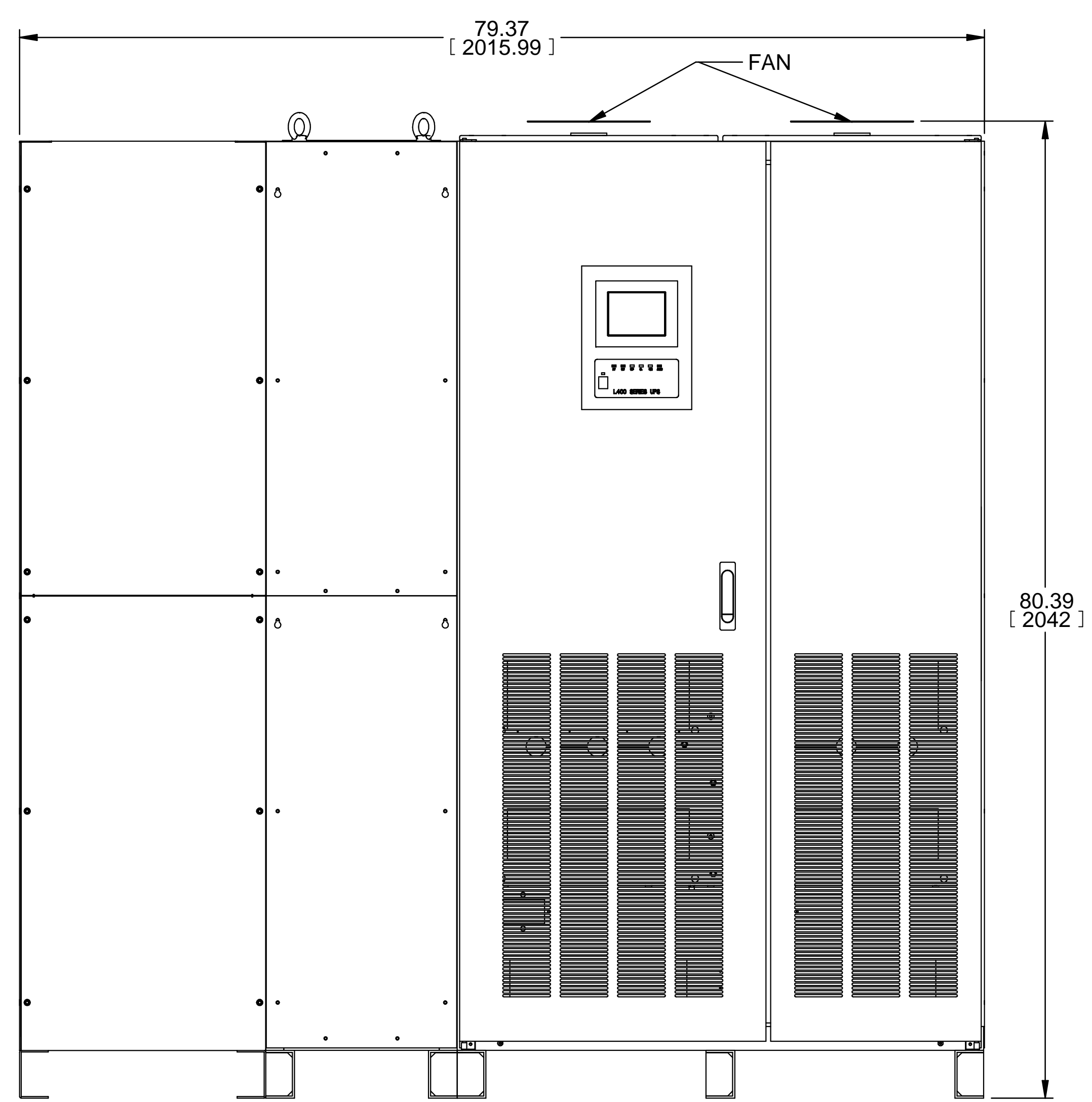
- NOTES**
1. FIELD CABLES AND TERMINATIONS BY OTHERS (AC INPUT, DC INPUT, BYPASS INPUT AND AC OUTPUT.)
 2. PHASE ROTATION CLOCKWISE A.B.C.
 3. 15.75" SIDECAR SHIPPED ATTACHED TO UPS.
 4. 20.25" SIDECAR SHIPPED SEPARATE.
 5. CABINET MUST MAINTAIN +/- 15° UPRIGHT.
 6. APPROXIMATE TOTAL WEIGHT 3,072LBS (1394KG)
 7. ALL PRODUCTS ARE UL LISTED
 8. 20.25" SIDECAR IS A WIREWAY
 9. HEAT REJECTION:
 - 42 KBTUS/HR @ 100%
 - 26.1 KBTUS/HR @ 75%
 - 17.4 KBTUS/HR @ 50%



LEFT SIDE



TOP VIEW



FRONT VIEW

REVISIONS	DATE	BY	DESCRIPTION
0. RELEASED FOR CONSTRUCTION	7/20/2016	G. JOHNSTON	
1. REVISED DRAWING TO SHOW UPS	4/11/2017	N. RIEMER	
2. ADDED HEAT REJECTION, "KG", AND "mm" VALUES. UPDATED PER ECN 1386	7/11/19	Z. ZAJAC	

FABRICATION TOLERANCE	
NOMINAL SIZE	TOLERANCE
ANGLES	±0.01"
HOLE TO MATERIAL EDGE	±0.01
HOLE TO FORMED EDGE	±0.01
HOLE TO HOLE	±0.005
FORMED EDGE TO FORMED EDGE	±0.01
FORMED EDGE TO WELDED EDGE < 48.0	±0.03
FORMED EDGE TO WELDED EDGE > 48.0	±0.06
PANEL DISTORTION OVER 48.0in	0.03 MAX

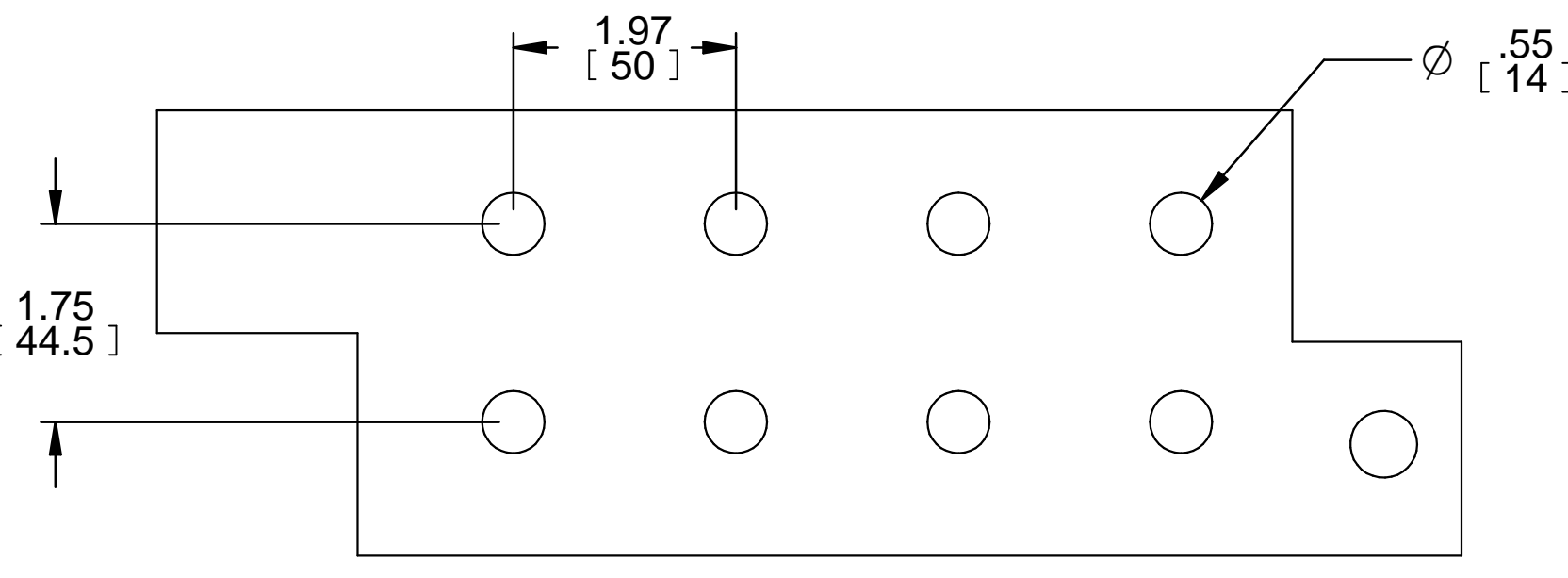
DIMENSIONS IN:		SCALE
IN	[MM] (REP)	
		PROPRIETARY
This document is the property of Mitsubishi Electric Power Products, Inc. and contains proprietary and confidential information which must not be duplicated, used or disclosed other than as expressly authorized by Mitsubishi Electric Power Products, Inc.		

DRAFTER	DATE
G. JOHNSTON	7/20/16
APPROVED	DATE
N. RIEMER	7/20/16

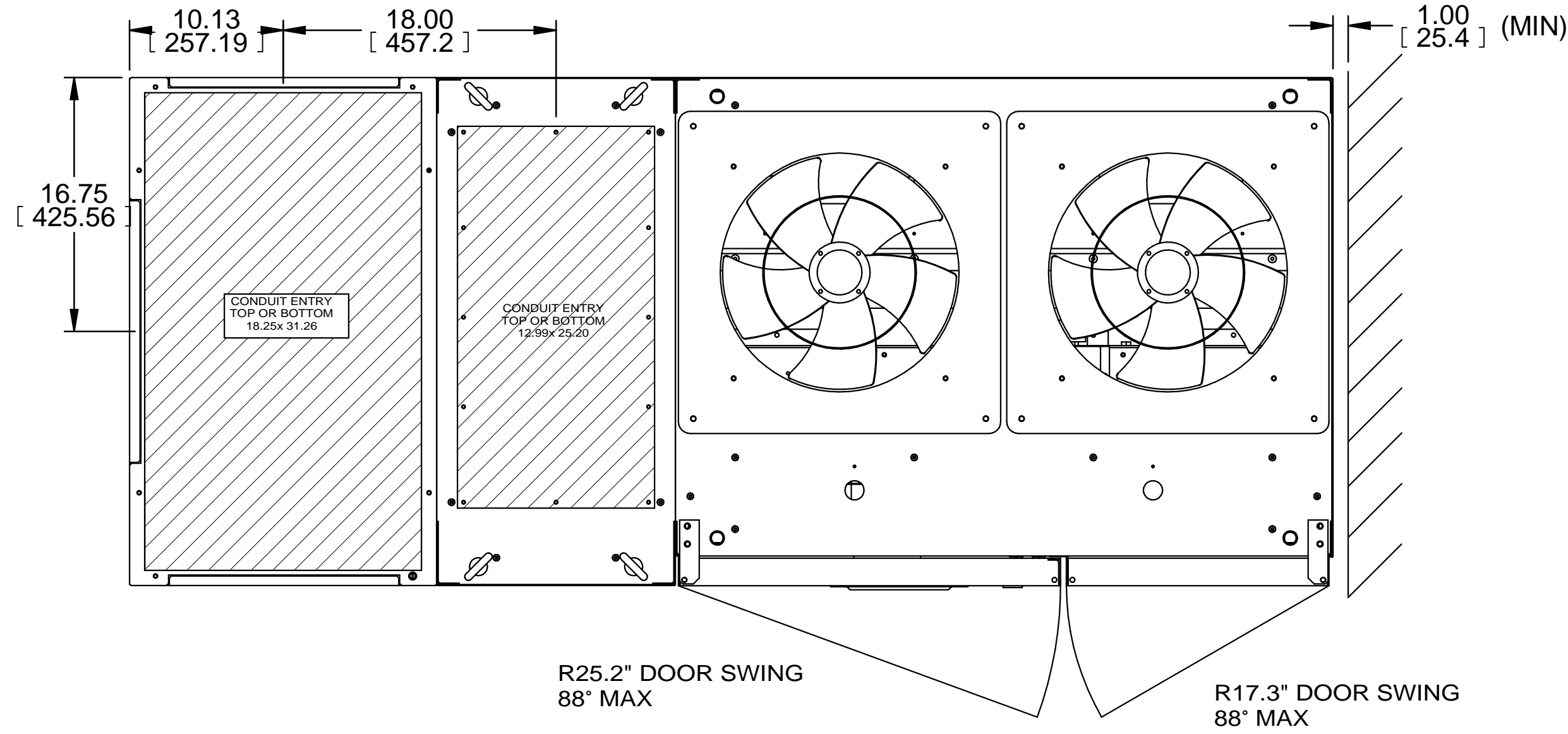
MITSUBISHI ELECTRIC

TITLE: **OUTLINE-1**

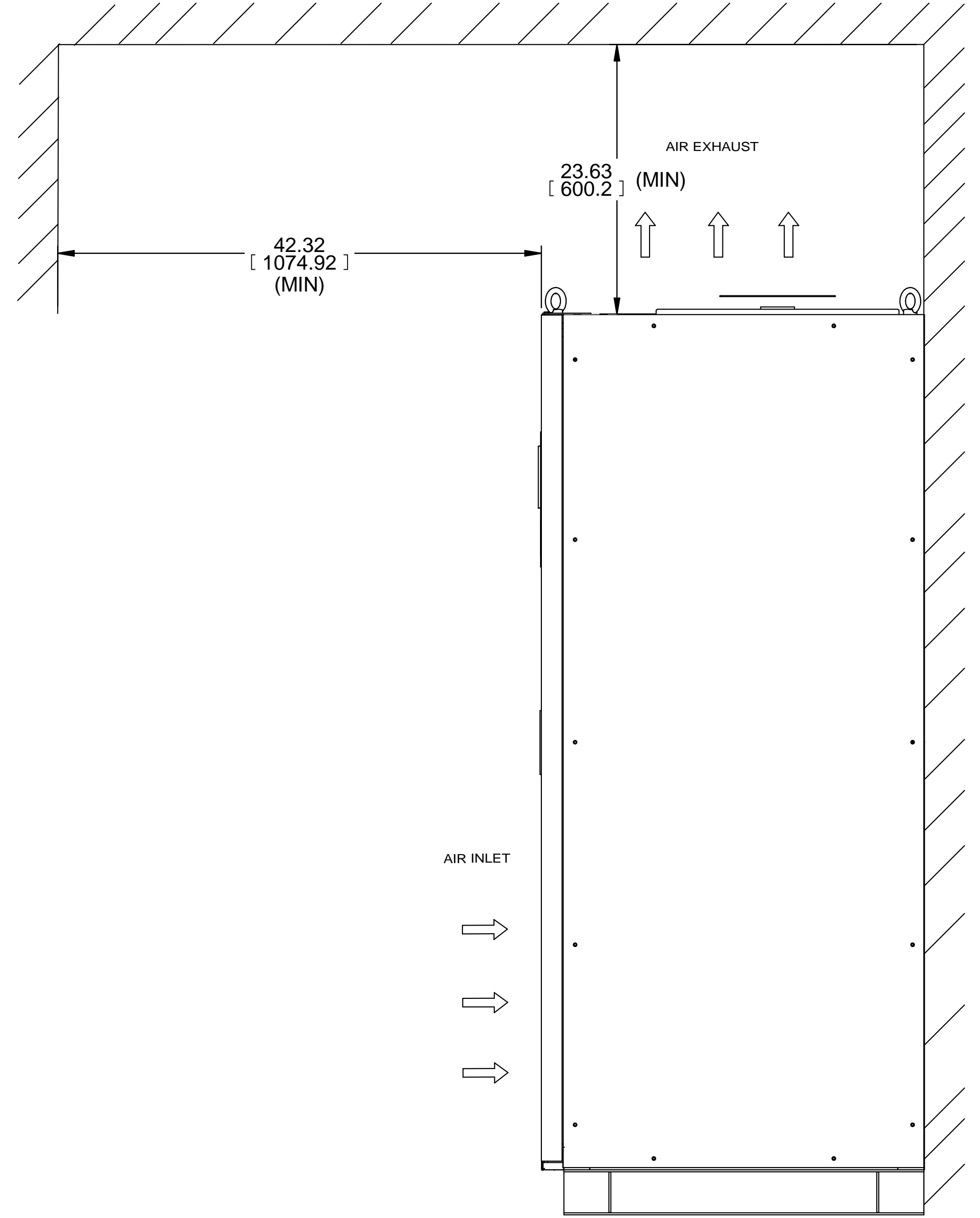
DWG. NO. **UD-100540** SHEET 2 OF 7 REV. **2**



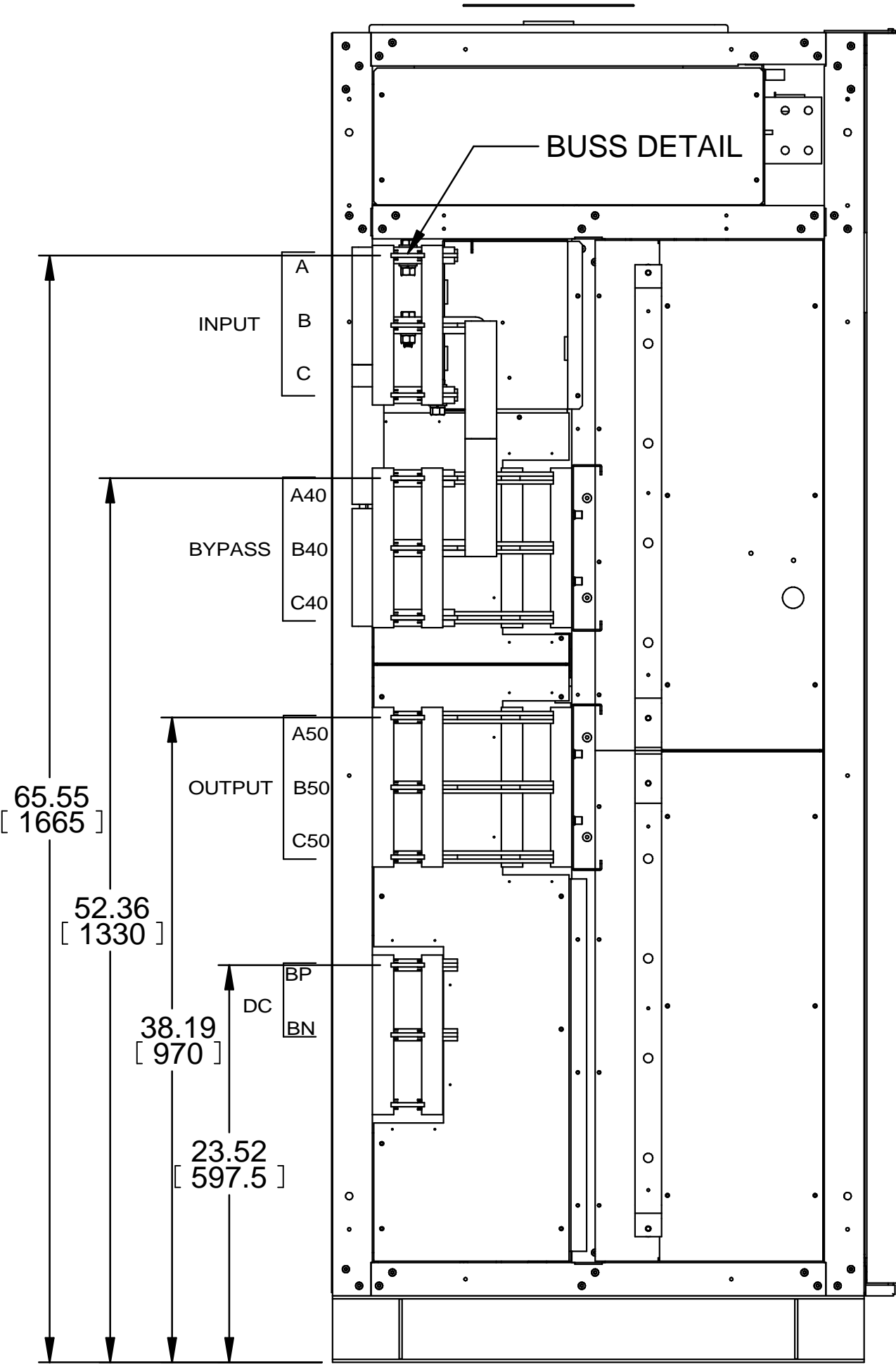
**BUSS DETAIL
(TYPICAL)**



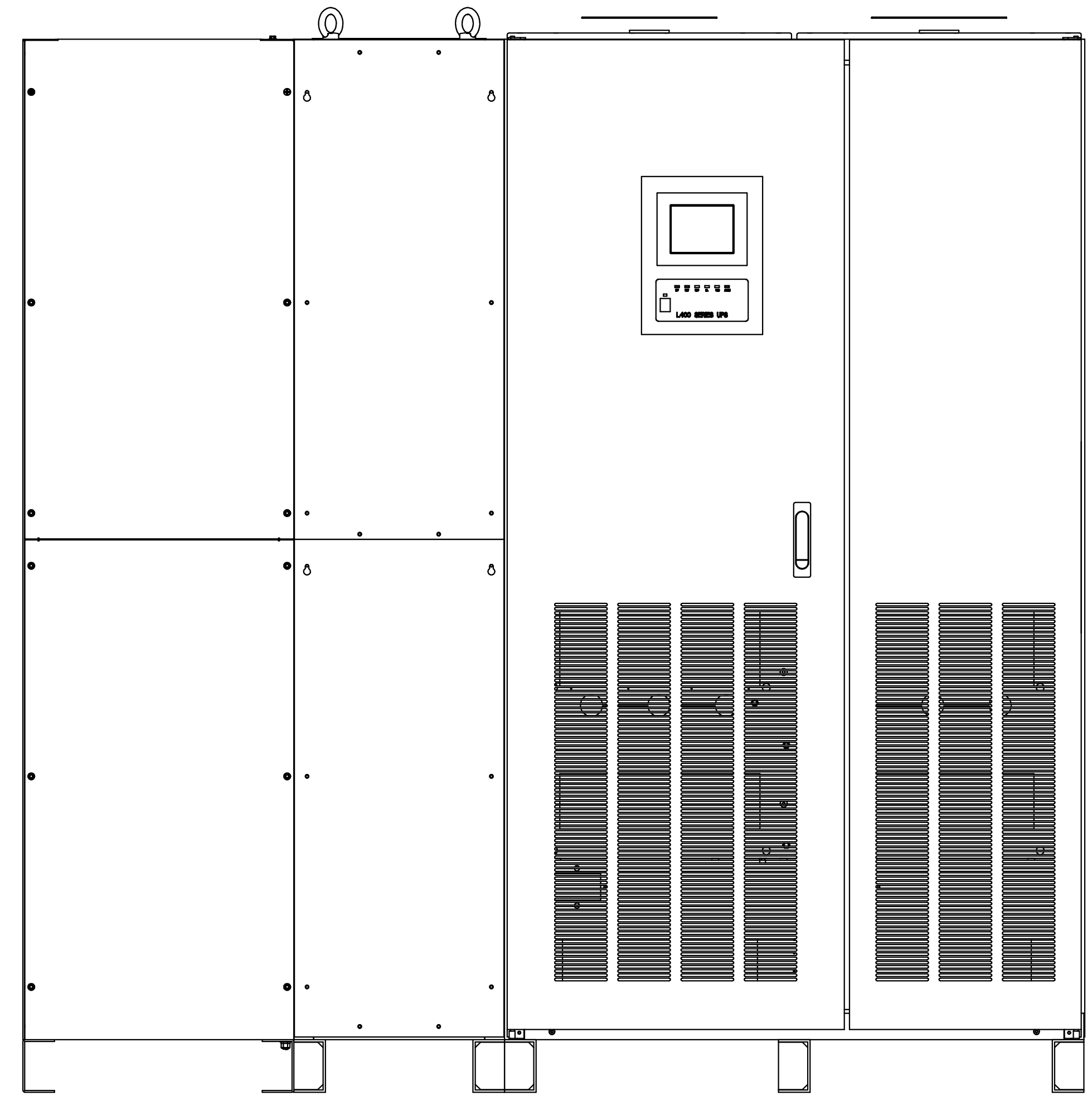
TOP VIEW



RIGHT SIDE VIEW



**LEFT SIDE
SIDE CAR REMOVED FOR CLARITY**



FRONT VIEW

REVISIONS
0. RELEASED FOR CONSTRUCTION G. JOHNSTON 7/20/2016
1. REVISED DRAWING TO SHOW UPS N. RIEMER 4/11/2017
2. ADDED HEAT REJECTION, "KG", AND "mm" VALUES; UPDATED PER ECN 1386 Z. ZAJAC 7/11/19

FABRICATION TOLERANCE	
NOMINAL SIZE	TOLERANCE
ANGLES	±0.01°
HOLE TO MATERIAL EDGE	±0.01
HOLE TO FORMED EDGE	±0.01
HOLE TO HOLE	±0.005
FORMED EDGE TO FORMED EDGE	±0.01
FORMED EDGE TO WELDED EDGE < 48.0	±0.03
FORMED EDGE TO WELDED EDGE > 48.0	±0.06
PANEL DISTORTION OVER 48.0in	0.03 MAX

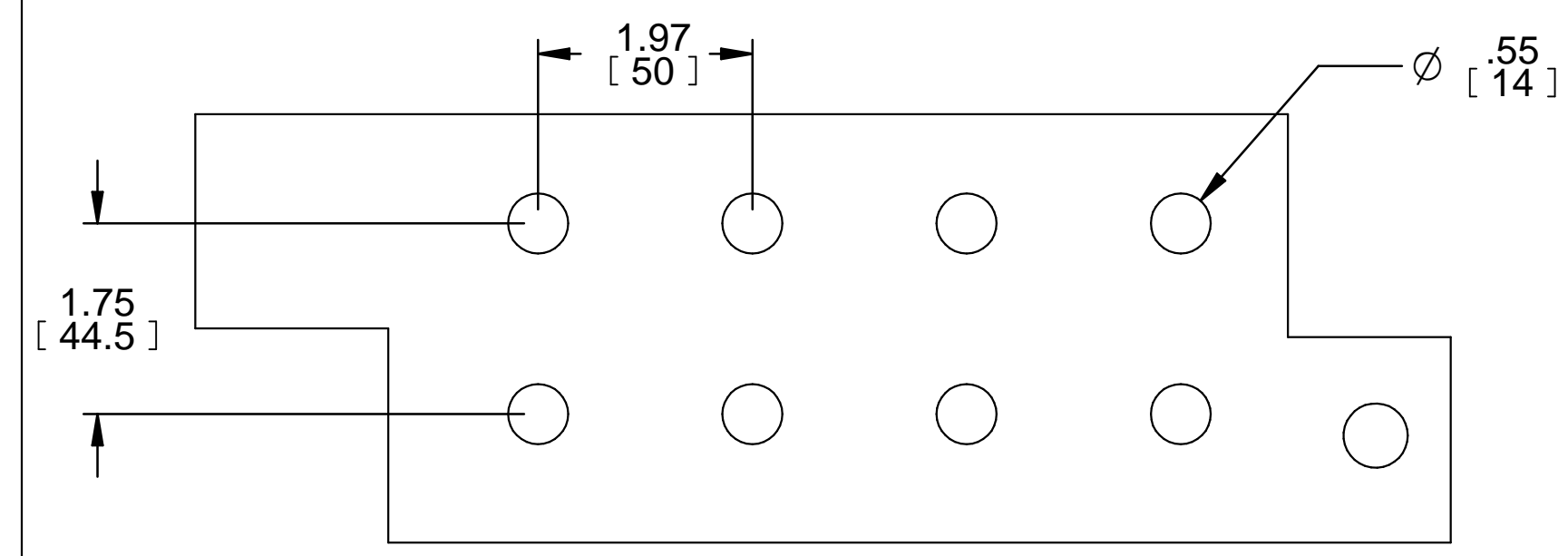
DIMENSIONS IN:	SCALE
IN [MM] (REP)	
PROPRIETARY	
This document is the property of Mitsubishi Electric Power Products, Inc. and contains proprietary and confidential information which must not be duplicated, used or disclosed other than as expressly authorized by Mitsubishi Electric Power Products, Inc.	

DRAFTER	DATE
APPROVED	DATE
G. JOHNSTON	7/20/16
N. RIEMER	7/20/16

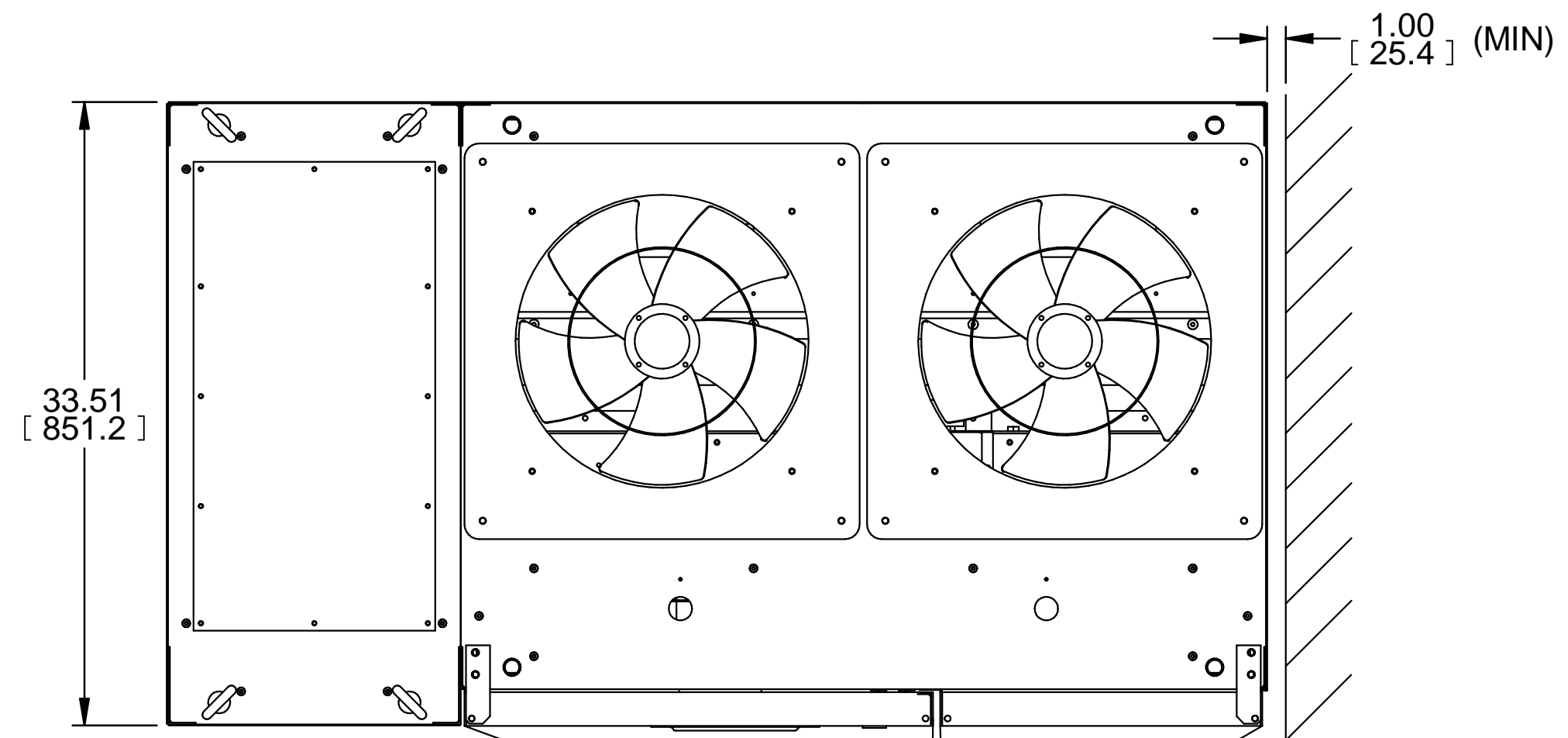
MITSUBISHI ELECTRIC

TITLE: **OUTLINE-2**

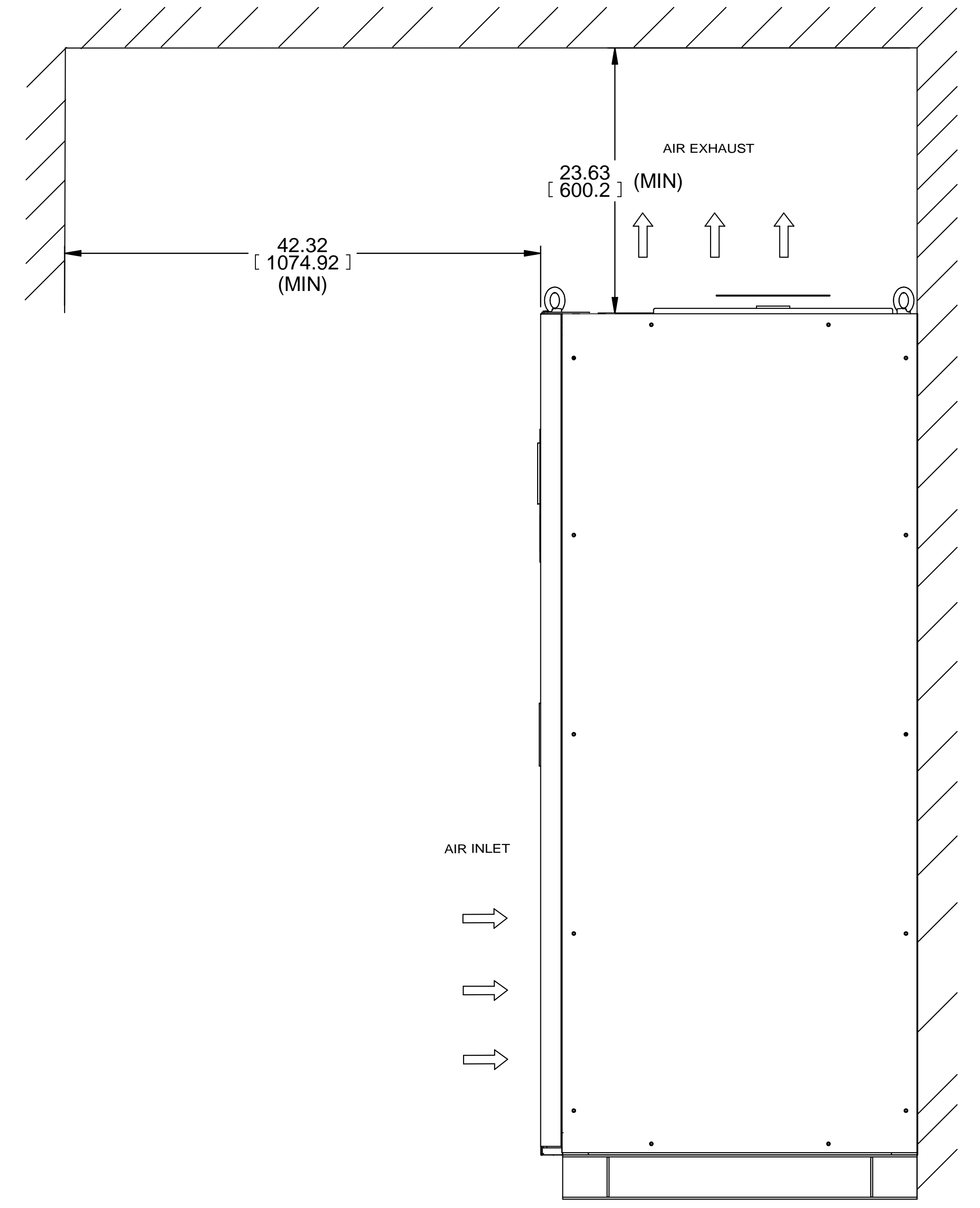
DWG. NO. **UD-100540** SHEET 3 OF 7 REV. **2**



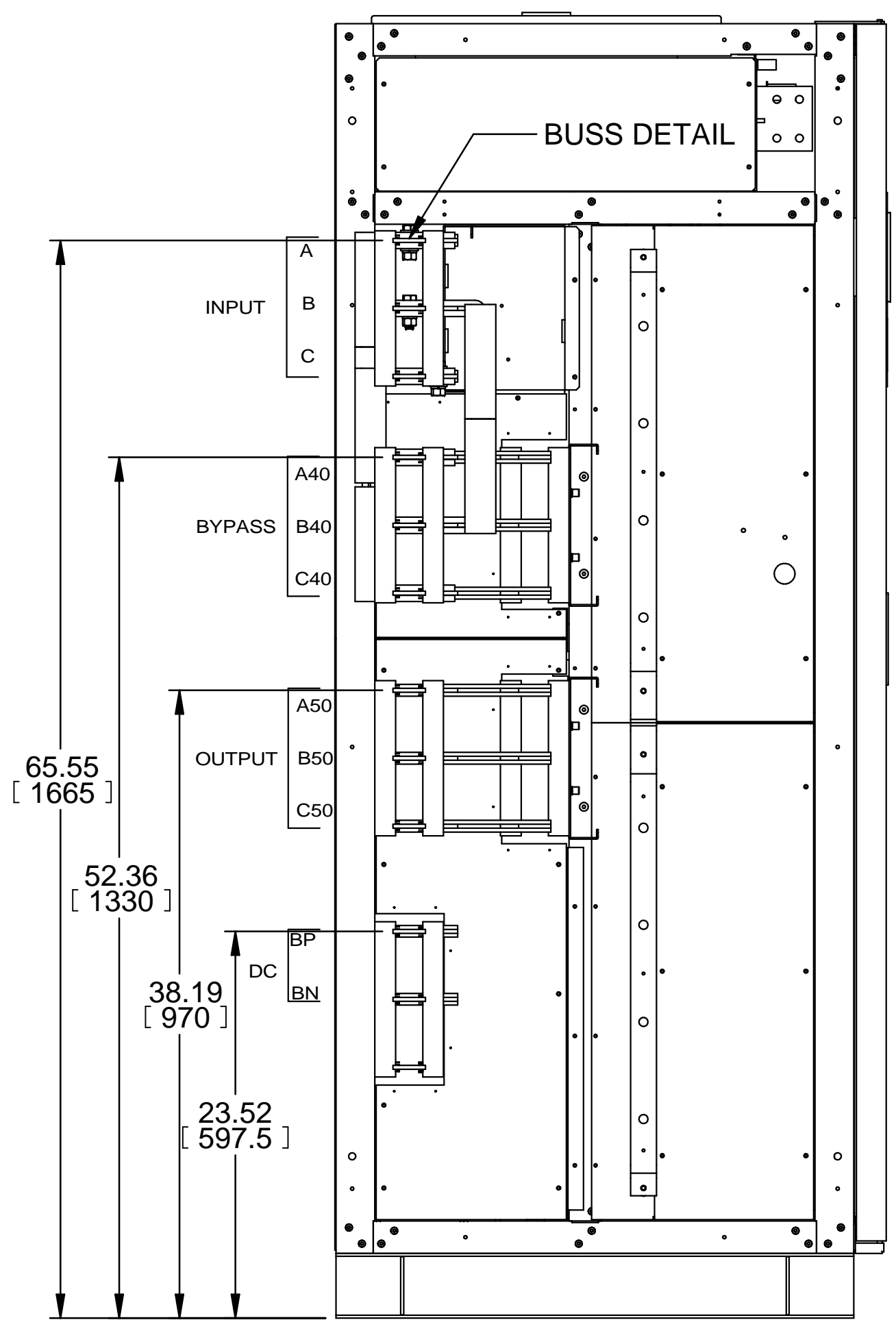
BUSS DETAIL
(TYPICAL)



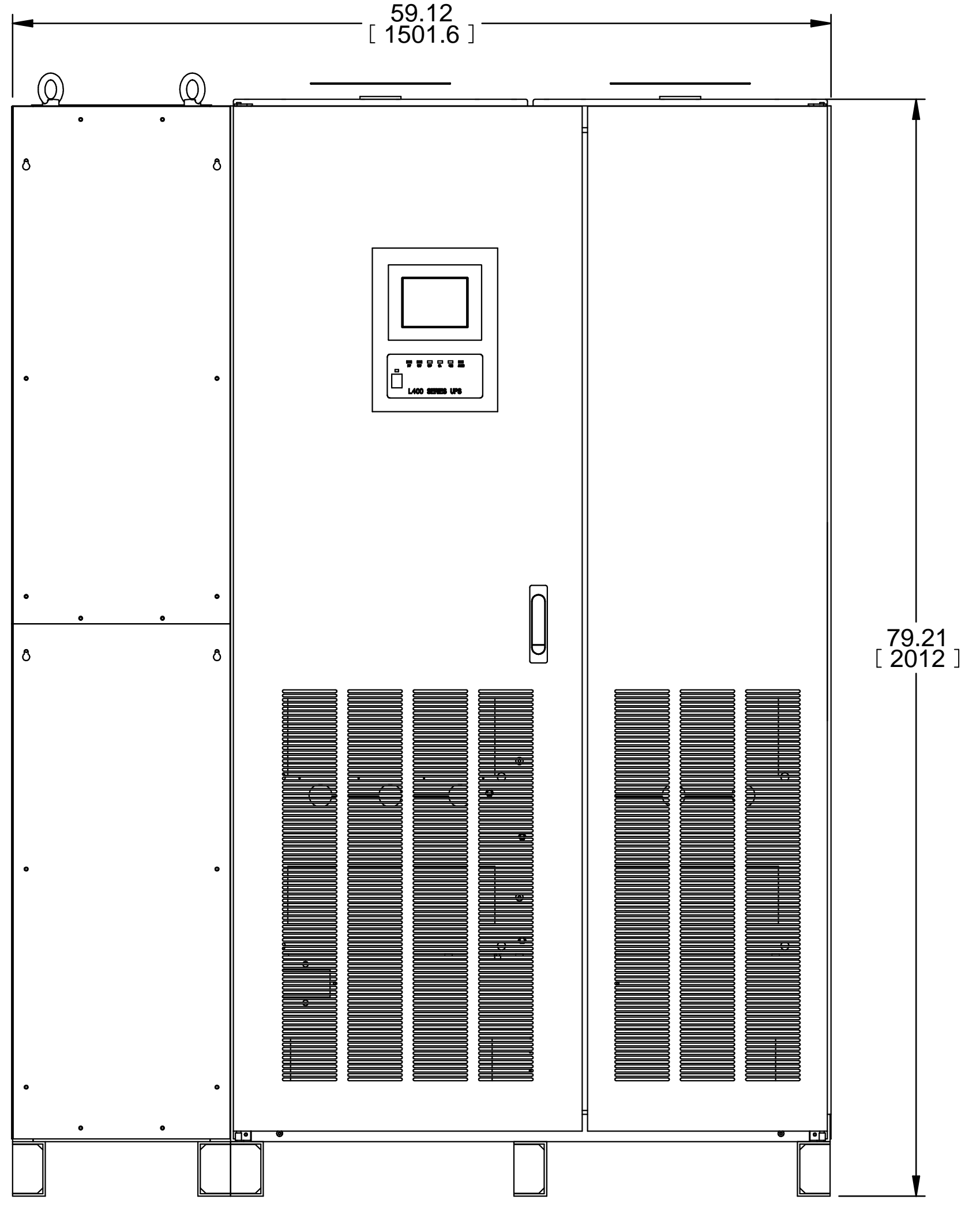
TOP VIEW



RIGHT SIDE VIEW



LEFT SIDE
SIDECAR REMOVED FOR CLARITY



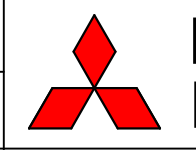
FRONT VIEW

REVISIONS	DATE	BY	DESCRIPTION
0. RELEASED FOR CONSTRUCTION	7/20/2016	G. JOHNSTON	
1. REVISED DRAWING TO SHOW UPS	4/11/2017	N. RIEMER	
2. ADDED HEAT REJECTION, "KG", AND "mm" VALUES; UPDATED PER ECN 1386	7/11/19	Z. ZAJAC	

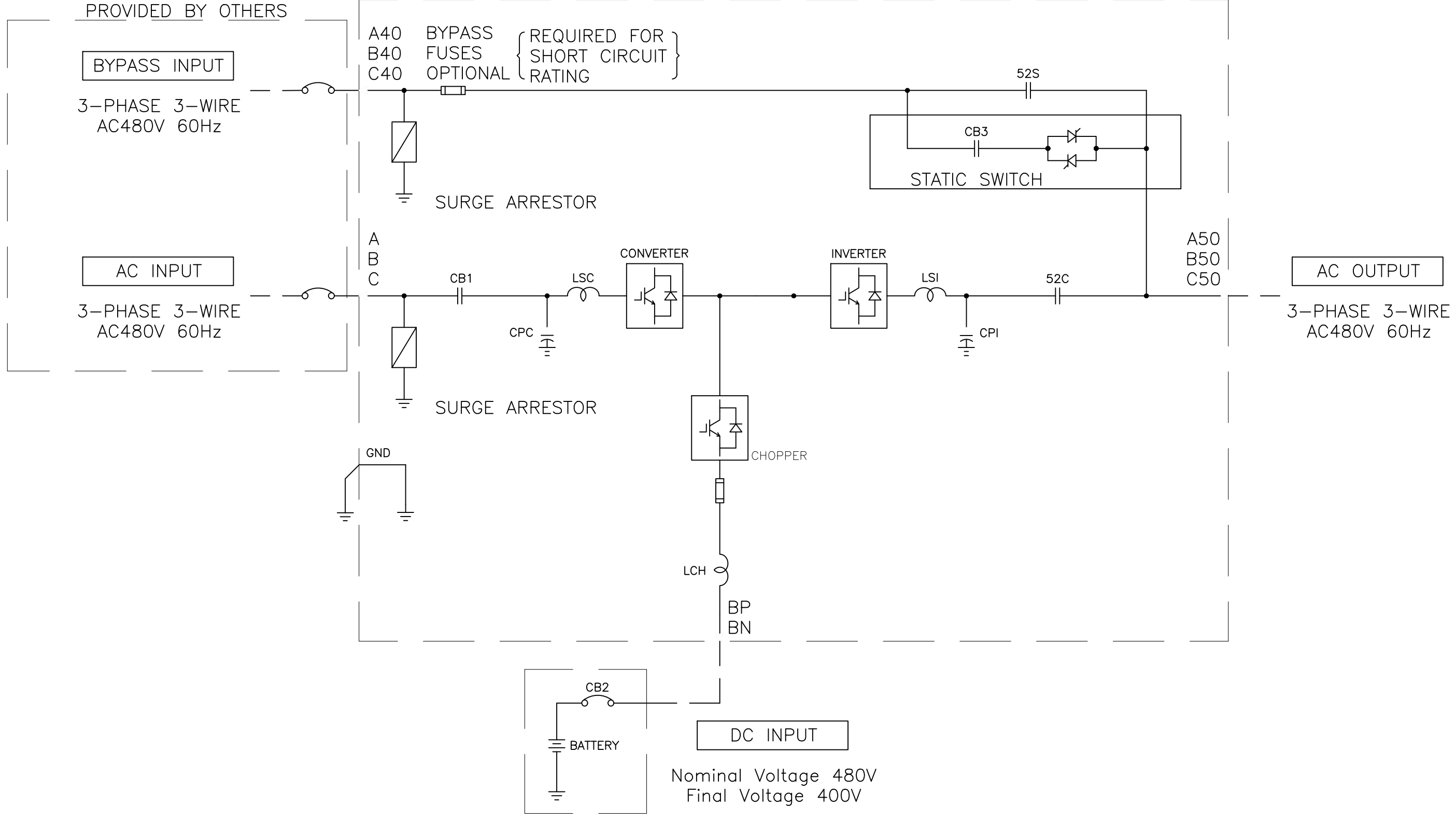
FABRICATION TOLERANCE	
NOMINAL SIZE	TOLERANCE
ANGLES	±0.01°
HOLE TO MATERIAL EDGE	±0.01
HOLE TO FORMED EDGE	±0.01
HOLE TO HOLE	±0.005
FORMED EDGE TO FORMED EDGE	±0.01
FORMED EDGE TO WELDED EDGE < 48.0	±0.03
FORMED EDGE TO WELDED EDGE > 48.0	±0.06
PANEL DISTORTION OVER 48.0in	0.03 MAX

DIMENSIONS IN:		SCALE
IN	[MM]	(REP)
PROPRIETARY This document is the property of Mitsubishi Electric Power Products, Inc. and contains proprietary and confidential information which must not be duplicated, used or disclosed other than as expressly authorized by Mitsubishi Electric Power Products, Inc.		

DRAFTER	DATE
G. JOHNSTON	7/20/16
APPROVED	DATE
N. RIEMER	7/20/16


MITSUBISHI ELECTRIC
 TITLE: **OUTLINE-3**
 DWG. NO. **UD-100540** SHEET 4 OF 7 REV. **2**

500kVA 500kW UPS MODULE



REVISIONS

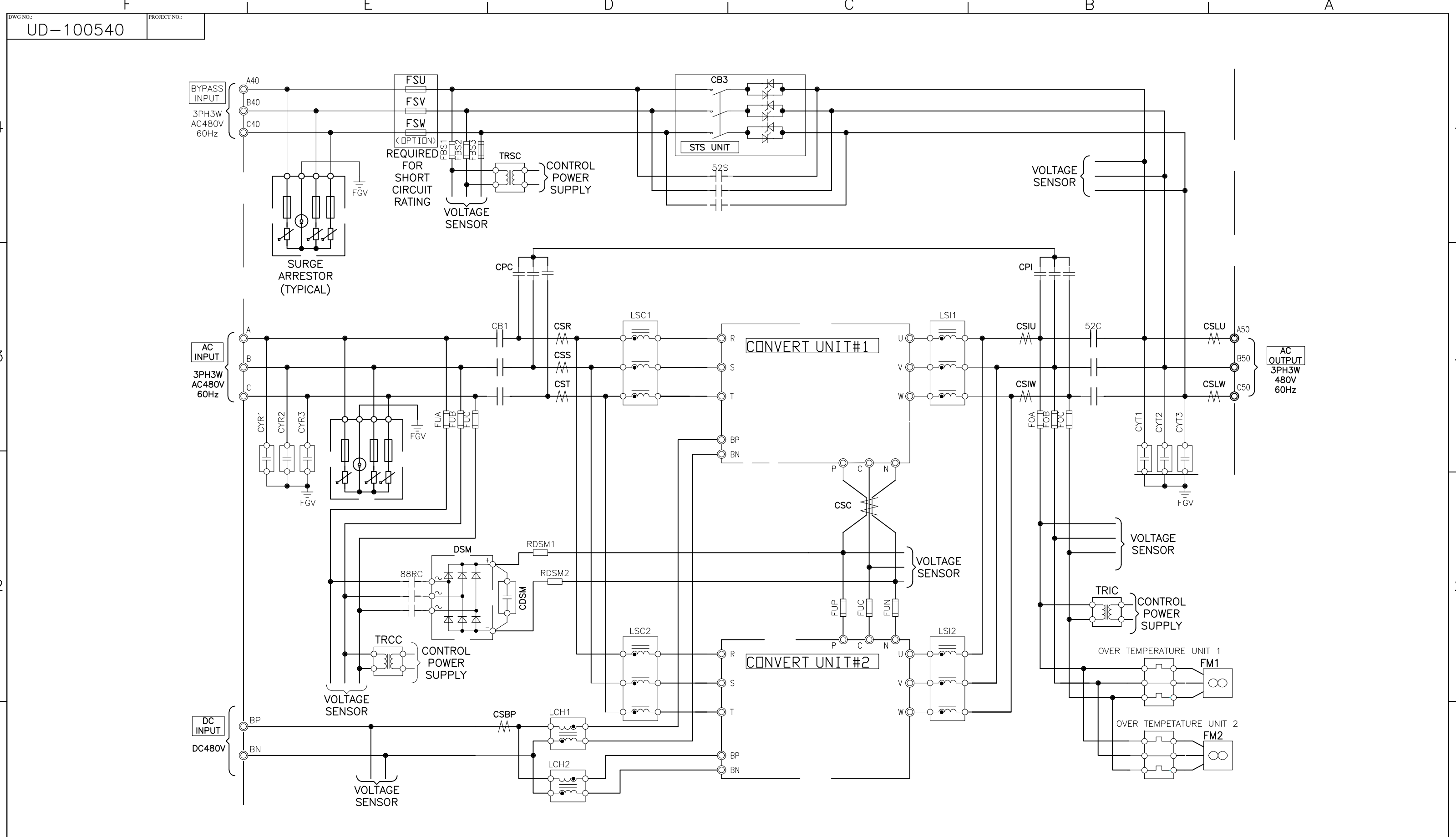
0	INITIAL RELEASE	7/20/16	GDJ
1	REVISED DRAWING TO SHOW UPS	4/11/17	NR
2	ADDED HEAT REJECTION, KC*, AND "mm" VALUES; UPDATED PER ECN 1386	7/11/19	Z.ZAJAC

DIM. IN:	INCHES [MM]	SCALE:	NTS	DRAFTER:	Z.ZAJAC	DATE:	08/20/18
<small>PROPRIETARY THIS DOCUMENT IS PROPERTY OF MITSUBISHI ELECTRIC POWER PRODUCTS, INC. AND CONTAINS PROPRIETARY AND CONFIDENTIAL INFORMATION WHICH MUST NOT BE DUPLICATED, USED OR DISCLOSED OTHER THAN AS EXPRESSLY AUTHORIZED BY MITSUBISHI ELECTRICAL POWER PRODUCTS, INC.</small>				CHECKED:	N. RIEMER	DATE:	08/20/18
REF. DWG. NO.:		ENGINEER:	K. BEAMER	DATE:	08/20/18	TITLE:	
FILE LOCATION:		APPROVED:	K. BEAMER	DATE:	08/20/18	SHEET 5 OF 7	

MITSUBISHI ELECTRIC

SINGLE LINE DIAGRAM

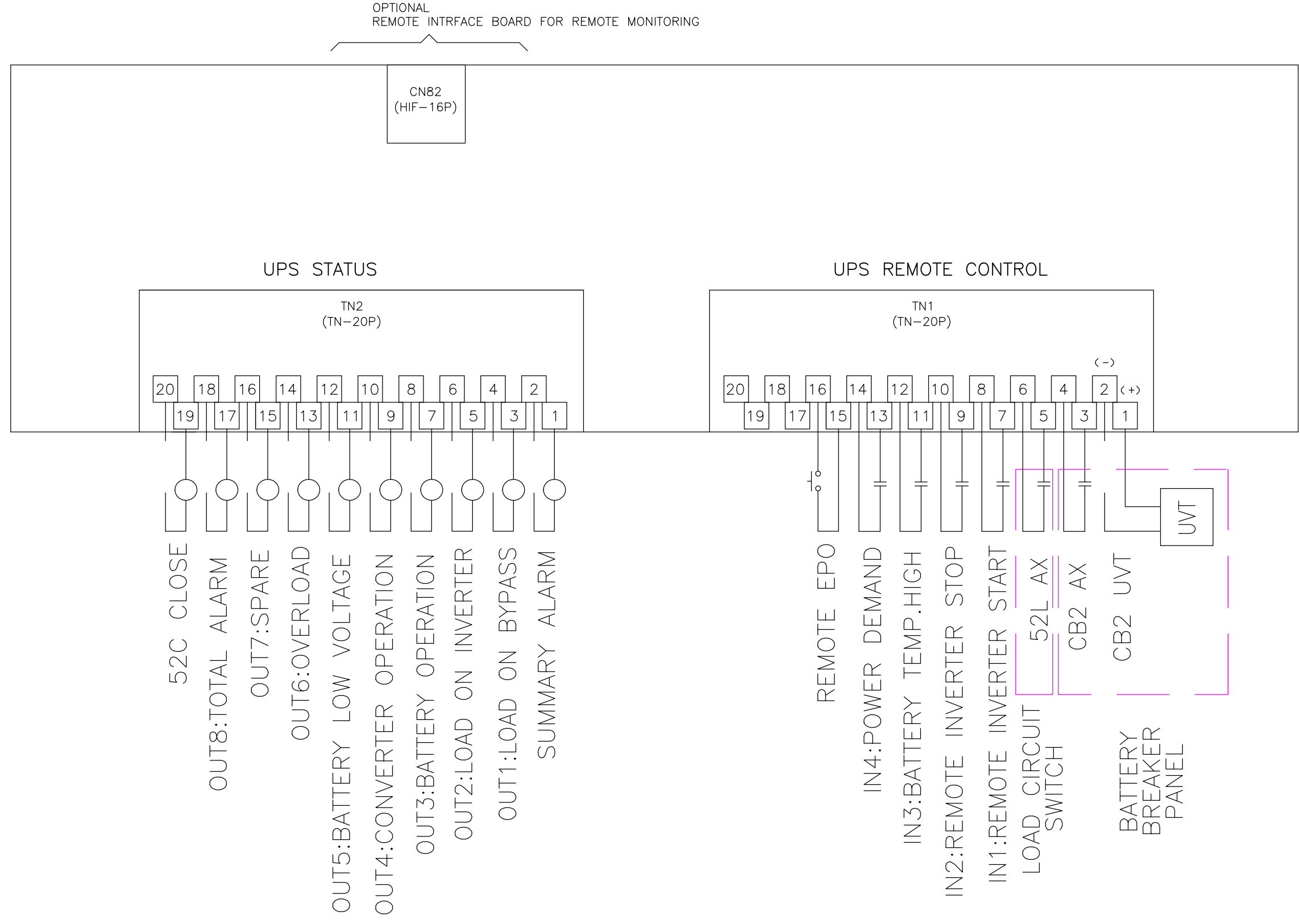
DWG NO.: UD-100540 SHEET 5 OF 7 REV: 2



REVISIONS
0 INITIAL RELEASE 7/20/16 GCU
1 REVISED DRAWING TO SHOW UPS 4/11/17 NR
2. ADDED "HEAT REJECTION, KG", AND "mm" VALUES; UPDATED PER ECN 1386 Z.ZAJAC 7/11/19

DIM. IN: INCHES [MM]	SCALE: NTS	DRAFTER: Z.ZAJAC	DATE: 08/20/18
PROPRIETARY THIS DOCUMENT IS PROPERTY OF MITSUBISHI ELECTRIC POWER PRODUCTS, INC. AND CONTAINS PROPRIETARY AND CONFIDENTIAL INFORMATION WHICH MUST NOT BE DUPLICATED, USED OR DISCLOSED OTHER THAN AS EXPRESSLY AUTHORIZED BY MITSUBISHI ELECTRICAL POWER PRODUCTS, INC.		CHECKED: N. RIEMER	DATE: 08/20/18
REF. DWG. NO.:		ENGINEER: K. BEAMER	DATE: 08/20/18
FILE LOCATION:		APPROVED: K. BEAMER	DATE: 08/20/18

		TITLE: SYSTEM CONFIGURATION
		DWG NO.: UD-100540
SHEET 6 OF 7		REV: 2



REVISIONS
0 INITIAL RELEASE 7/20/16 GDU
1 REVISED DRAWING TO SHOW UPS 4/11/17 NR
2. ADDED HEAT REJECTION, KC*, AND PERM VALUES; UPDATED PER ECN 1386 Z.ZAJAC 7/11/19

DIM. IN:	SCALE: NTS	DRAFTER: Z.ZAJAC	DATE: 8/20/18
<small>PROPRIETARY THIS DOCUMENT IS PROPERTY OF MITSUBISHI ELECTRIC POWER PRODUCTS, INC. AND CONTAINS PROPRIETARY AND CONFIDENTIAL INFORMATION WHICH MUST NOT BE DUPLICATED, USED OR DISCLOSED OTHER THAN AS EXPRESSLY AUTHORIZED BY MITSUBISHI ELECTRICAL POWER PRODUCTS, INC.</small>		CHECKED: N. RIEMER	DATE: 8/20/18
REF. DWG. NO.:	APPROVED: K. BEAMER	ENGINEER: K. BEAMER	DATE: 8/20/18
FILE LOCATION:			

MITSUBISHI ELECTRIC

TITLE: EXTERNAL SIGNAL
TERMINAL BLOCK

SHEET 7 OF 7

DWG NO.: UD-100540 REV: 2