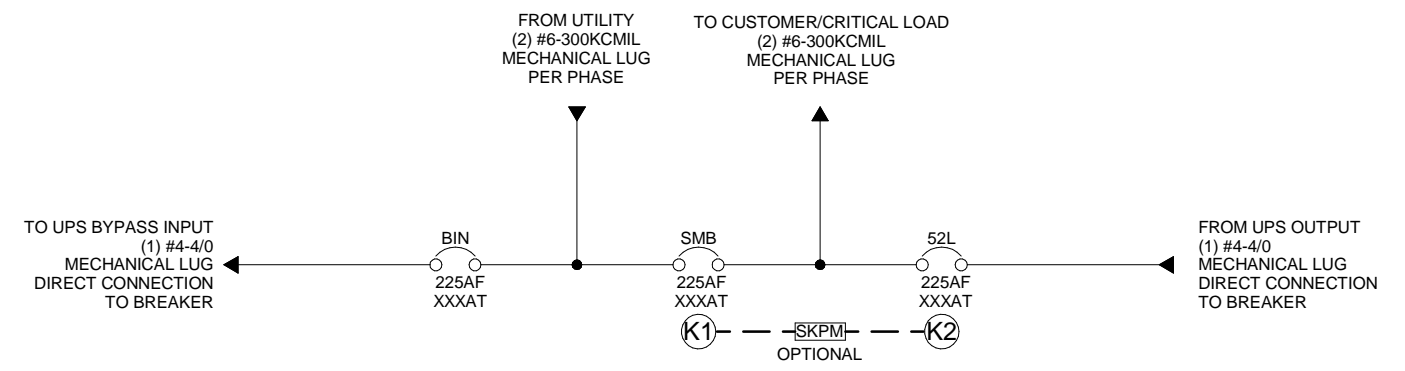
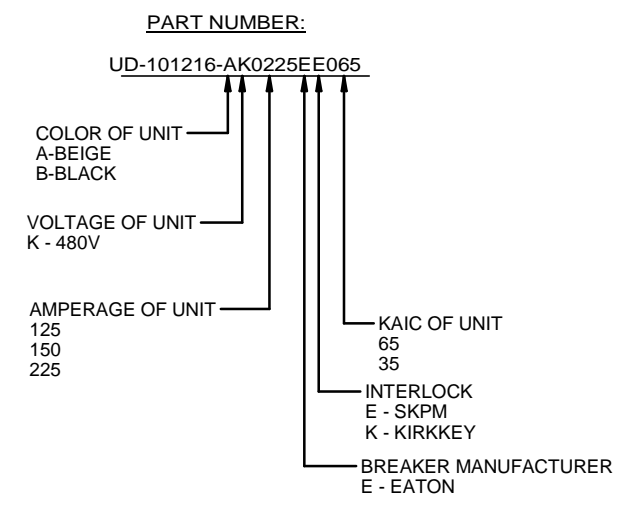
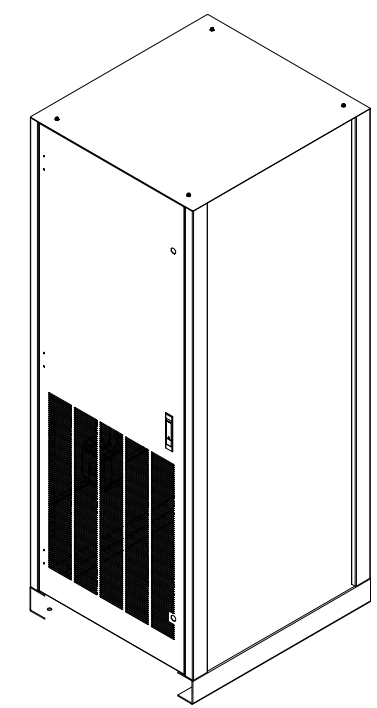
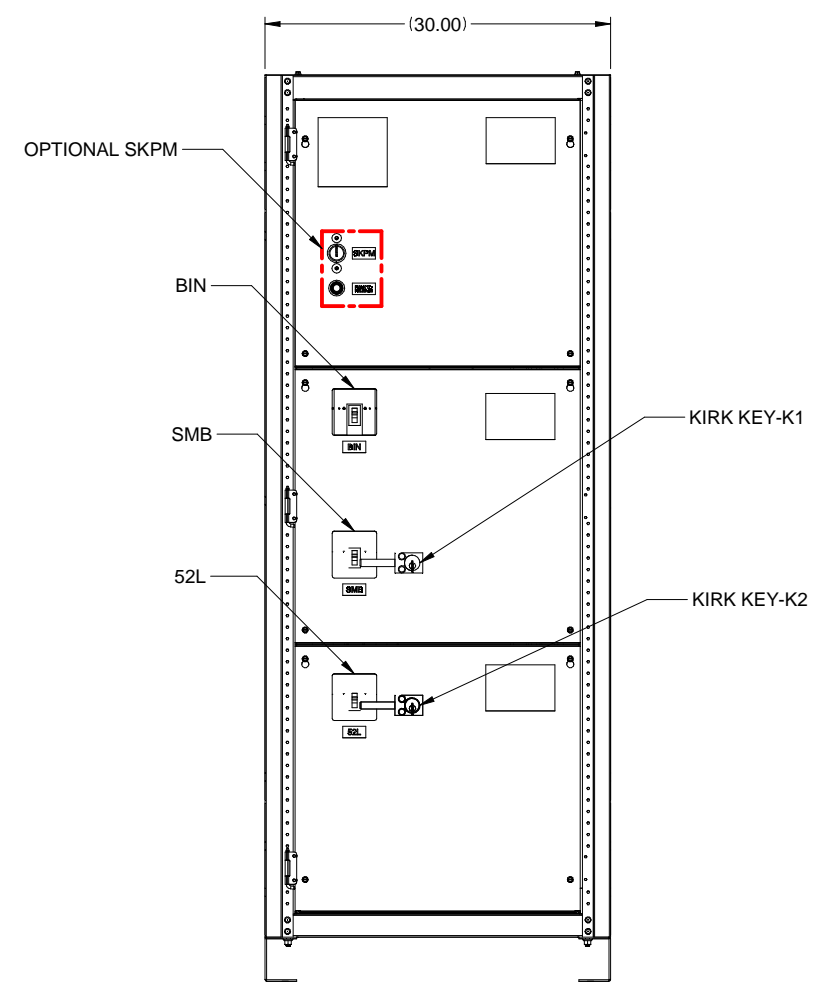
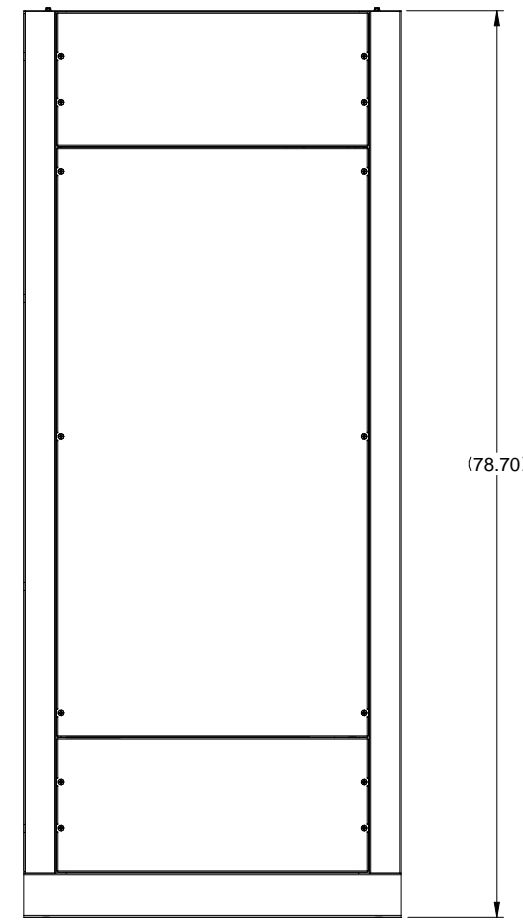
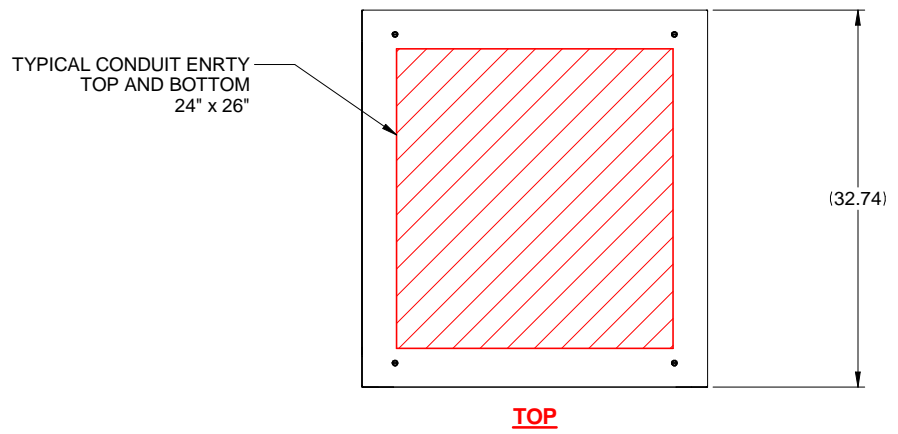


CIRCUIT BREAKER TABLE					
MFG	BREAKER FRAME	AMP	KAIC	LANDING PROVISIONS	TRIP
EATON	PD2-FRAME	125	35	MECHANICAL LUGS	THERMOMAGNETIC
		150			
		225			
		125	65		
		150			
		225			



- NOTES:
1. BYPASS DESIGNED TO BE SET ON EITHER SIDE OF UPS.
 2. APPROXIMATE WEIGHT: 375LBS
 3. THIS UNIT IS UL LISTED.
 4. CONSULT FACTORY FOR ADDITIONAL BYPASS OPTIONS.
 5. BREAKERS ARE 80% RATED.

125-225A MAINTENANCE BYPASS

REVISIONS	DATE	BY
0. INITIAL RELEASE	4/1/2020	Z.ZAJAC
1. CHANGED SINGLE LINE DIAGRAM	4/22/2020	Z.ZAJAC
2. UPDATED SINGLE LINE DIAGRAM	6/11/20	J. PRY-SOCK

DIMENSIONS IN: IN [MM] (REF)	SCALE - NTS -	DRAFTER Z.ZAJAC	DATE 4/1/20
<small>PROPRIETARY</small> This document is the property of Mitsubishi Electric Power Products, Inc. and contains proprietary and confidential information which must not be duplicated, used or disclosed other than as expressly authorized by Mitsubishi Electric Power Products, Inc.		APPROVED R.DURBIN	DATE 4/1/20
CORE/REFERENCE DRAWING (IF APPLICABLE)		TITLE 125A-225A;30";MAINTENANCE BYPASS	
DWG. NO. UD-101216(S)		SHEET 1 OF 1	REV. 2

