

# MITSUBISHI 9900D 1.5/1.6MVA UPS OUTLINE DRAWING

CUSTOMER -



PROJECT NUMBER -

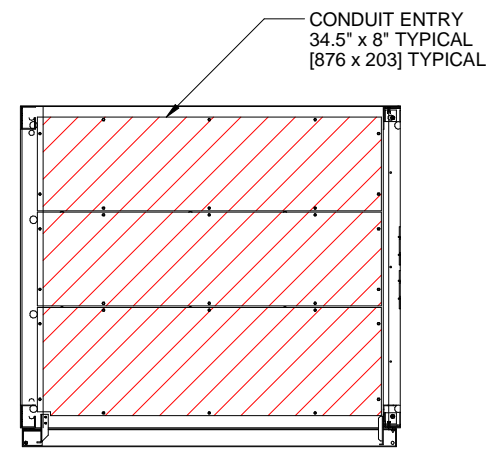
PROJECT LOCATION -

### TABLE OF CONTENTS

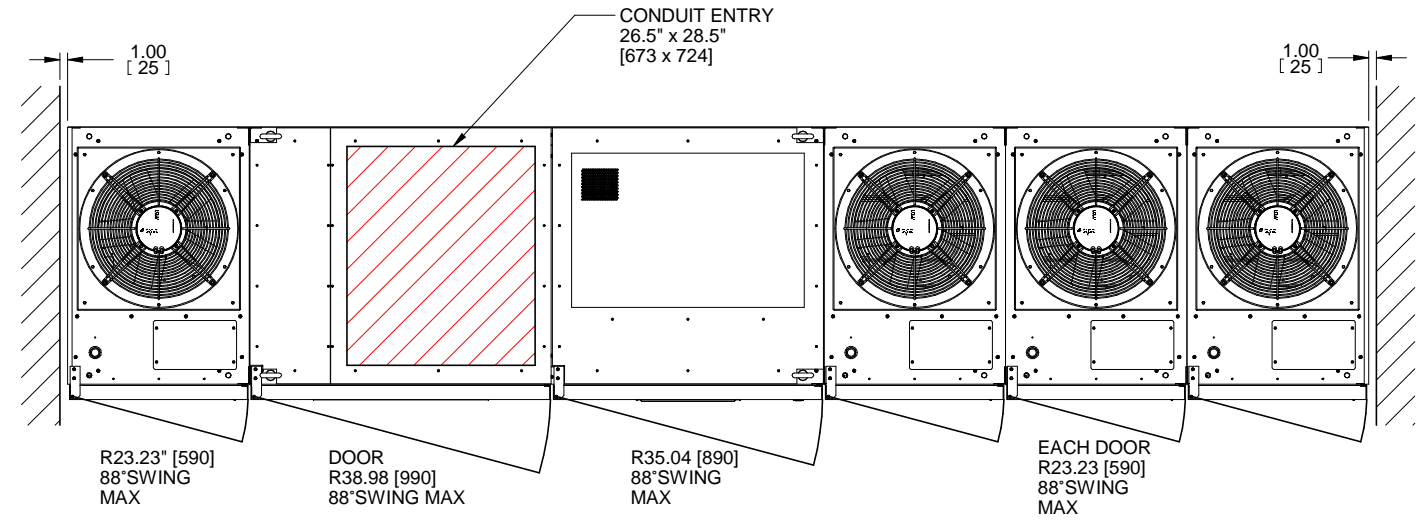
SHEET NO.	TITLE
01	COVER SHEET
02	OUTLINE
03	BUS CONNECTIONS
04	SYSTEM CONFIGURATION
05	SINGLE LINE
06	SINGLE LINE
07	
08	
09	
10	
11	
12	
13	
14	
15	

REVISIONS
0. INITIAL RELEASE Z.ZAJAC 11/25/19
2. CHANGED TITLE TO 1.5/1.6MVA Z.ZAJAC 12/11/19
3. UPDATED DIMENSIONS AND VIEWS FOR NEW DOOR J.PRY-SOCK 2/27/20
4. ADDED UVR CONNECTION TO SHEET 6. J.MOTT 7/10/2020
5. ADDED BUS HOLE DIAMETER AND THICKNESS DIMENSIONS. R.DURBIN 7/16/2021

DIMENSIONS IN: IN [MM] (REF)	SCALE - NTS -	DRAFTER Z.ZAJAC	DATE 11/25/19	 <b>MITSUBISHI ELECTRIC</b>
<small>PROPRIETARY</small> <small>This document is the property of Mitsubishi Electric Power Products, Inc. and contains proprietary and confidential information which must not be duplicated, used or disclosed other than as expressly authorized by Mitsubishi Electric Power Products, Inc.</small>		APPROVED A.WINTER	DATE 11/25/19	
CORE/REFERENCE DRAWING (IF APPLICABLE)				TITLE 9900D 1.5/1.6MVA OUTLINE DRAWING
		DWG. NO. <b>UD-101107</b>	SHEET 1 OF 6	REV. <b>5</b>



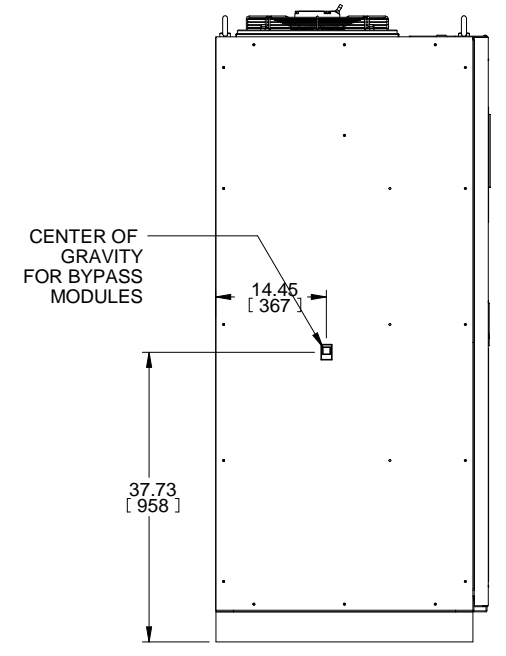
**SECTION A-A**  
**BOTTOM CONDUIT ENTRY**



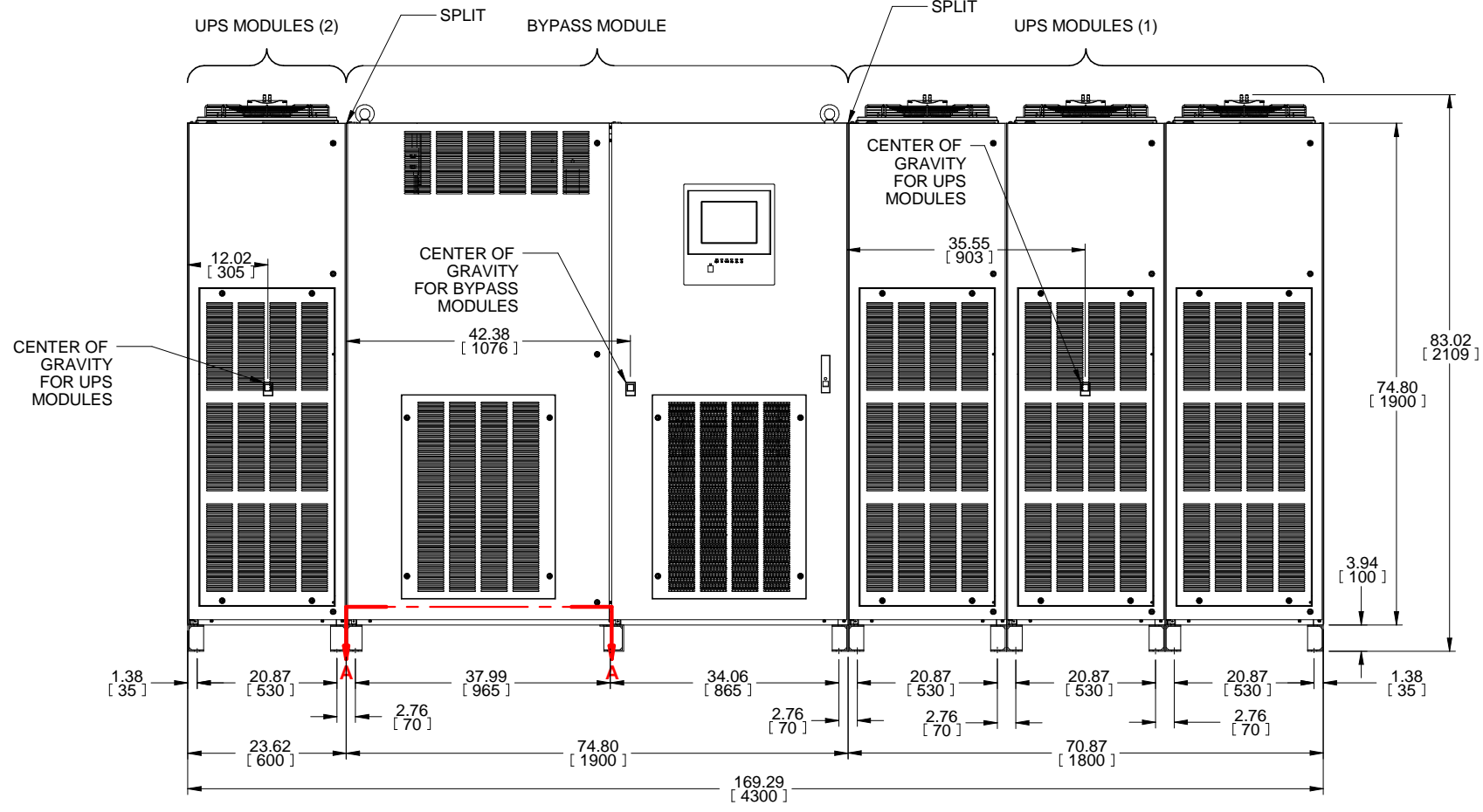
**TOP VIEW**

**NOTES:**

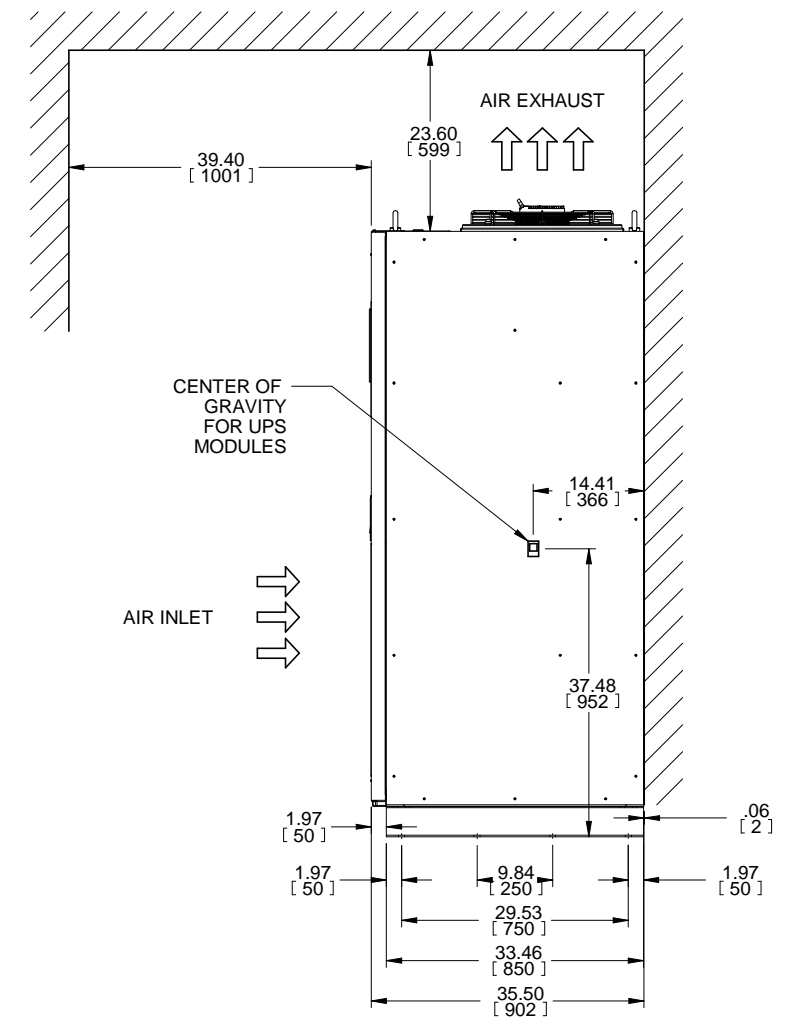
1. DIMENSIONS ARE SHOWN IN INCHES" [MILLIMETERS].
  2. SIDE SPACE "1"[25] IS NOT REQUIRED WHEN SIDECARS ARE USED.
  3. CABINET SHOULD BE MAINTAINED UPRIGHT WITHIN +/- 15° DURING HANDLING.
  4. EACH BASE CHANNEL HAS 2 OR 4 x 0.8"[20] DIAMETER HOLES TO FIX UPS ON THE GROUND.
  5. LIFTING EYES OPTIONAL.
  6. APPROXIMATE WEIGHT.
- |                |                    |
|----------------|--------------------|
| UPS MODULE (1) | 5,200LBS (2,360kg) |
| UPS MODULE (2) | 1,790LBS (820kg)   |
| BYPASS MODULE  | 2,700LBS (1,260kg) |
7. FLOOR SHALL BE FLAT AND LEVEL TO 0.3" SURROUNDING UPS MOUNTING.



**LEFT SIDE VIEW**



**FRONT VIEW**

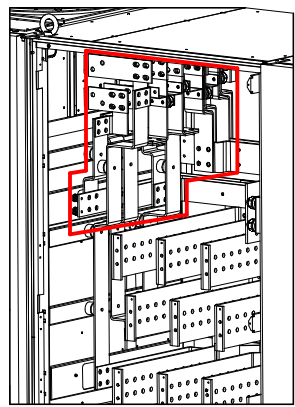


**RIGHT SIDE VIEW**

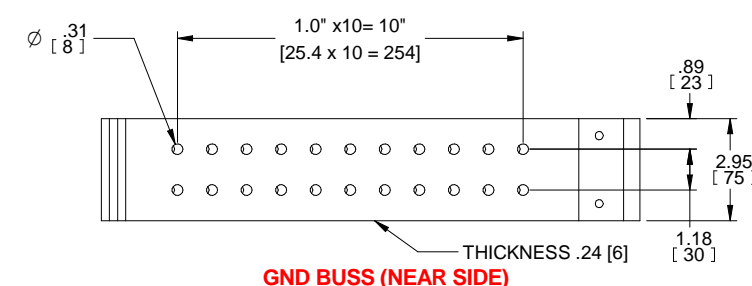
REVISIONS

0. INITIAL RELEASE Z.ZAJAC 11/25/19	2. CHANGED TITLE TO 1.5/1.6MVA Z.ZAJAC 12/11/19	3. UPDATED DIMENSIONS AND VIEWS FOR NEW DOOR J.PRY-SOCK 2/27/20	4. ADDED UVR CONNECTION TO SHEET 6. J.MOTT 7/10/2020
5. ADDED BUS HOLE DIAMETER AND THICKNESS DIMENSIONS. R.DURBIN 7/16/2021			

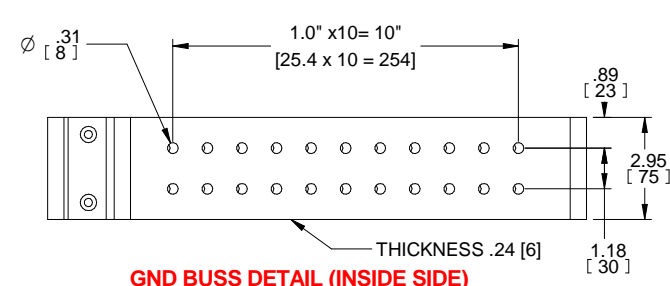
DIMENSIONS IN: IN [MM] (REF)	SCALE - NTS -	DRAFTER Z.ZAJAC	DATE 11/25/19	<p><b>MITSUBISHI ELECTRIC</b></p>
<small>PROPRIETARY</small> <small>This document is the property of Mitsubishi Electric Power Products, Inc. and contains proprietary and confidential information which must not be duplicated, used or disclosed other than as expressly authorized by Mitsubishi Electric Power Products, Inc.</small>		APPROVED A.WINTER	DATE 11/25/19	
<small>CORE/REFERENCE DRAWING (IF APPLICABLE)</small>				TITLE 9900D 1.5/1.6MVA OUTLINE DRAWING
		DWG. NO. <b>UD-101107</b>		SHEET 2 OF 6 REV. <b>5</b>



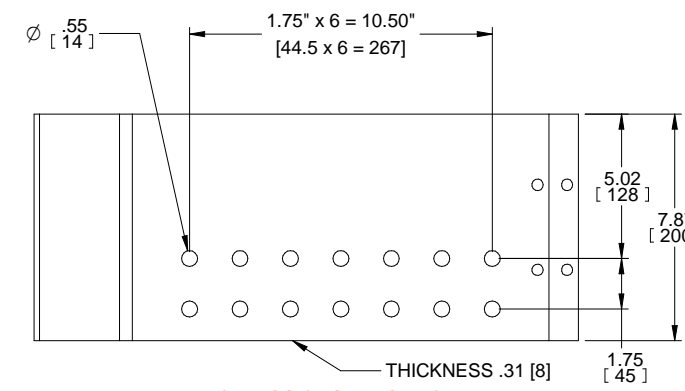
VIEW OF BYPASS TO MODULE BUSS



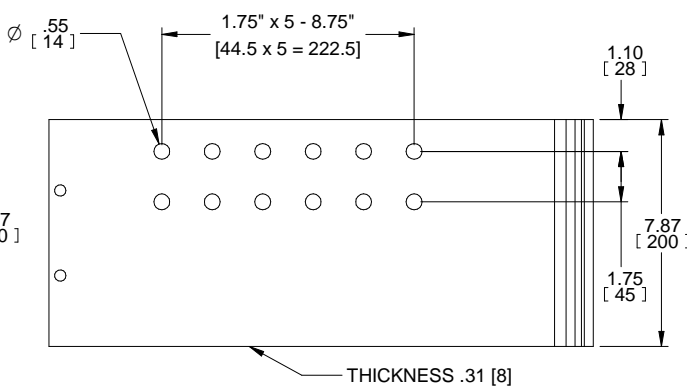
GND BUSS (NEAR SIDE)



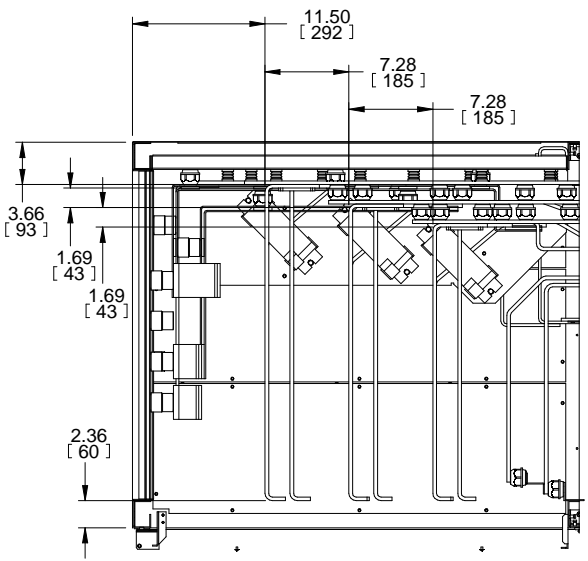
GND BUSS DETAIL (INSIDE SIDE)



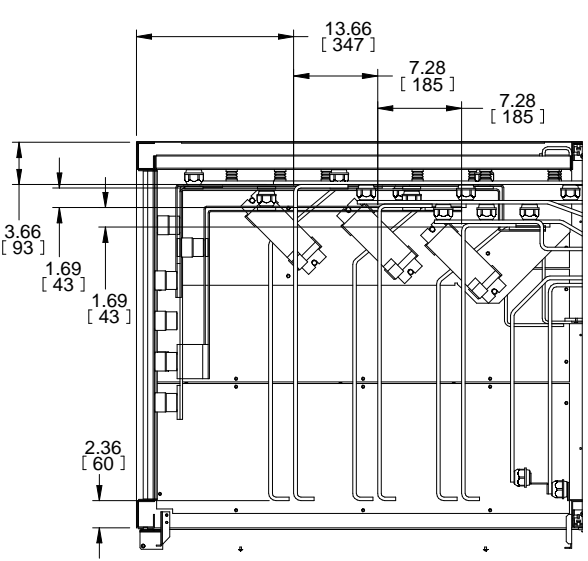
DC BUSS (INSIDE SIDE)



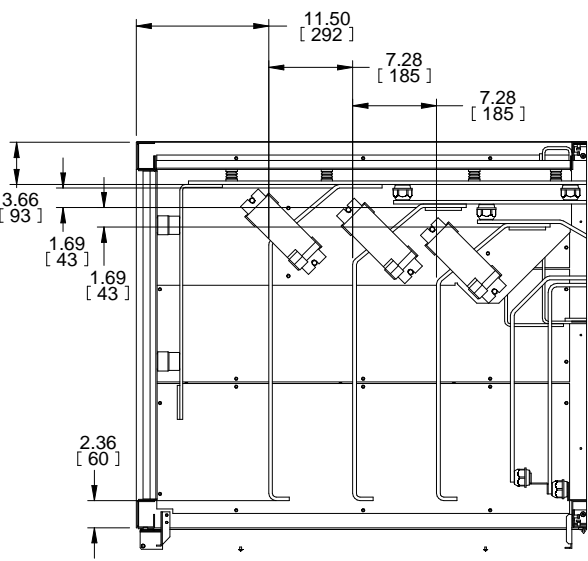
DC BUSS (NEAR SIDE)



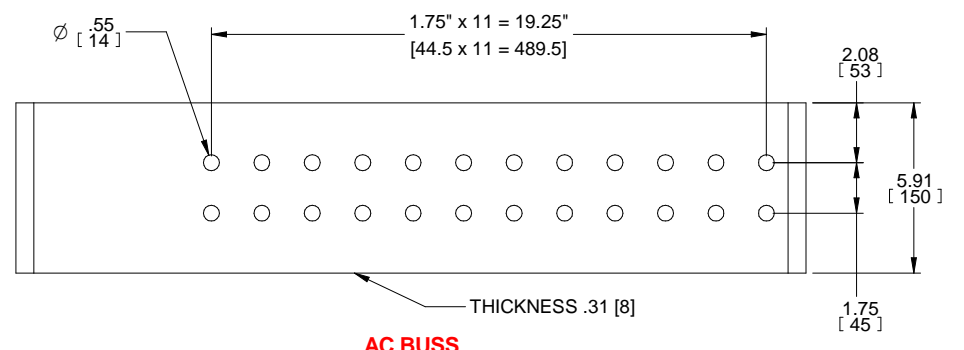
SECTION D-D



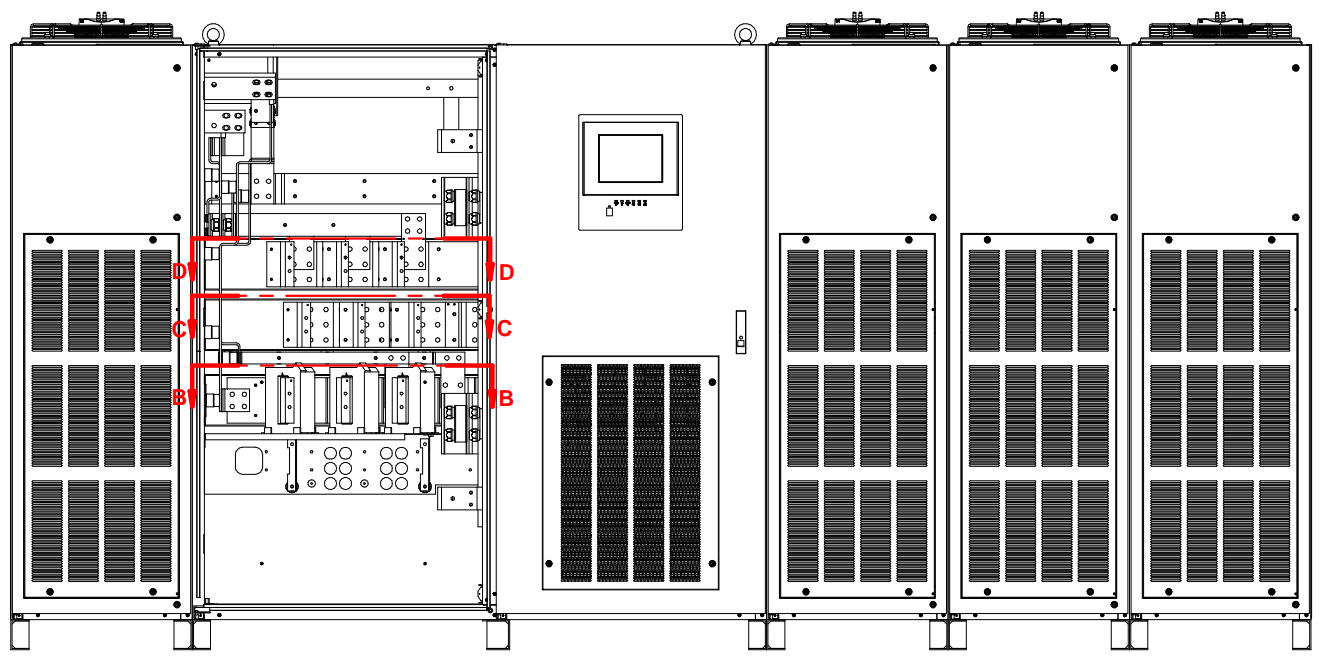
SECTION C-C



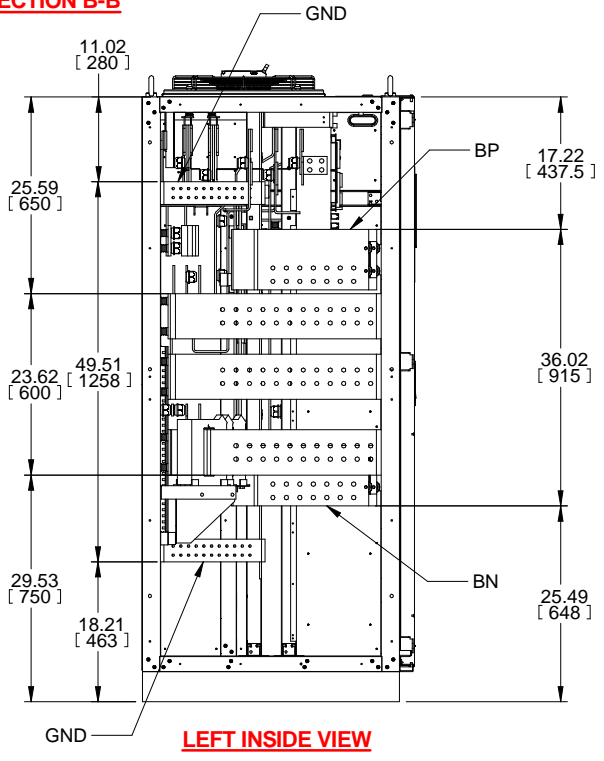
SECTION B-B



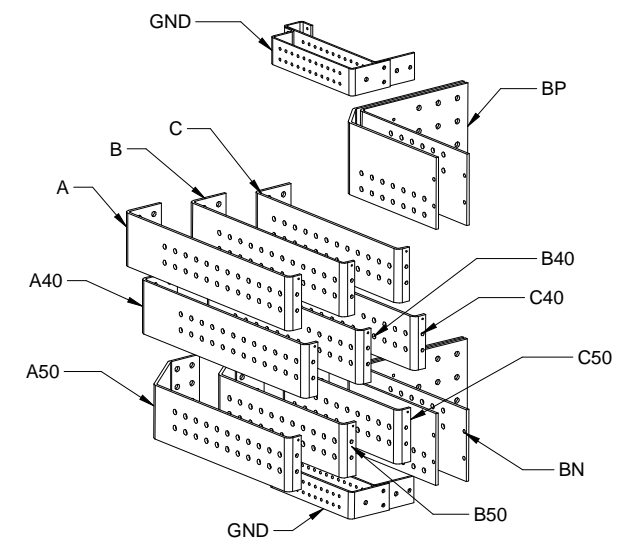
AC BUSS



FRONT INSIDE VIEW



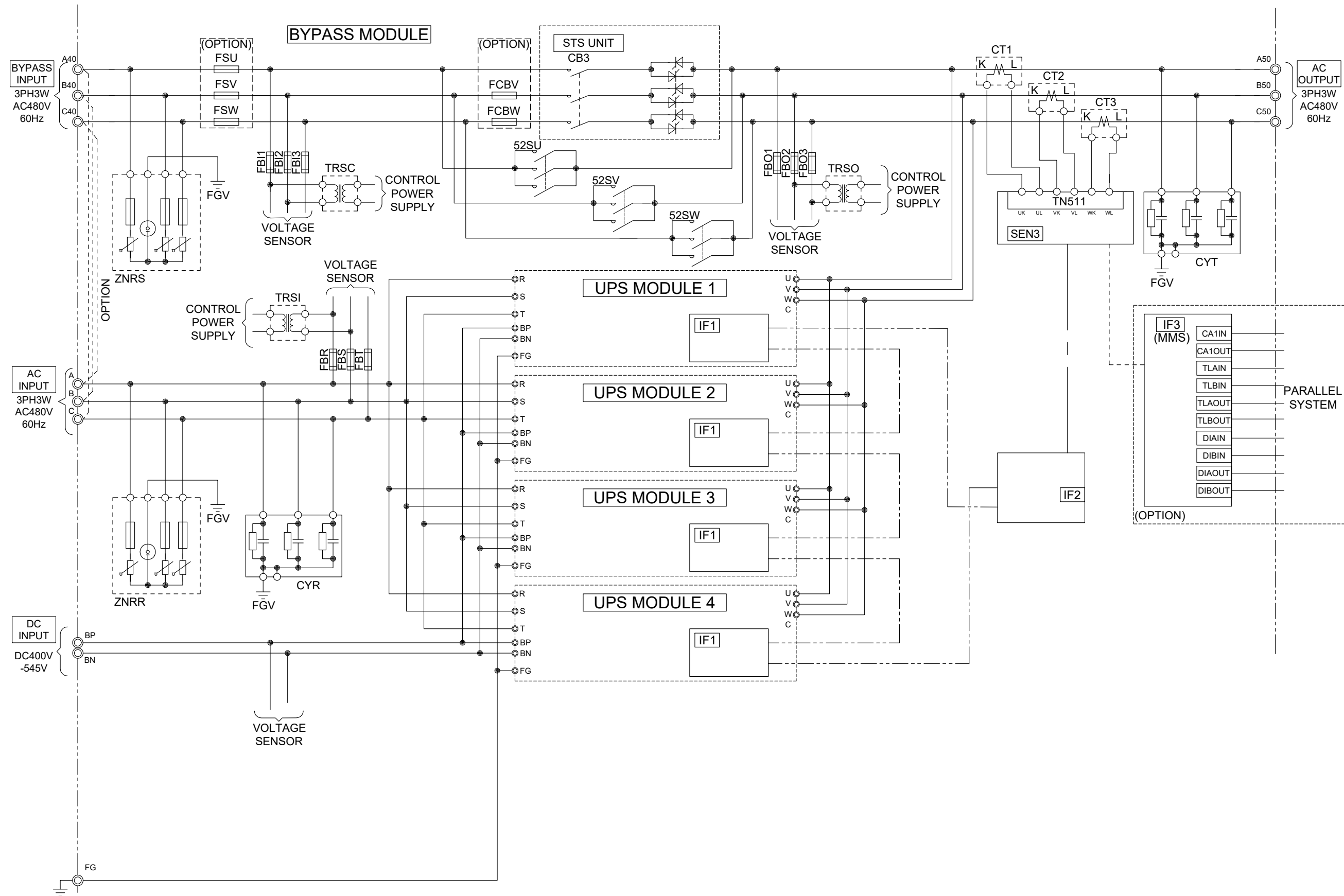
LEFT INSIDE VIEW



FRONT-TOP-LEFT VIEW OF TERMINAL BUSS

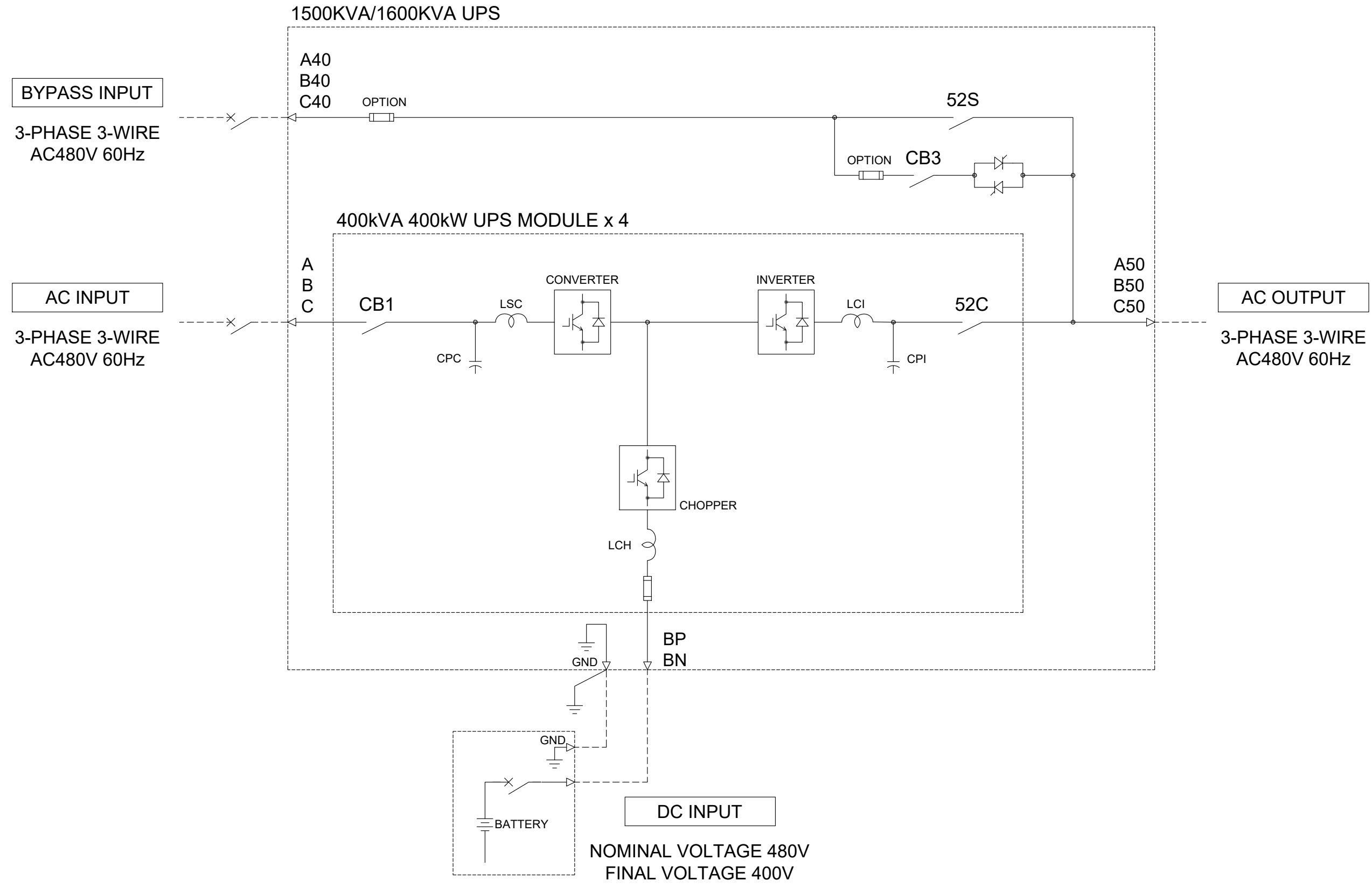
REVISIONS	DATE	BY	DESCRIPTION
0. INITIAL RELEASE	11/25/19	Z.ZAJAC	
2. CHANGED TITLE TO 1.5/1.6MVA	12/11/19	Z.ZAJAC	
3. UPDATED DIMENSIONS AND VIEWS FOR NEW DOOR	2/27/20	J.PRY-SOCK	
4. ADDED UVR CONNECTION TO SHEET 6.	7/10/2020	J.MOTT	
5. ADDED BUS HOLE DIAMETER AND THICKNESS DIMENSIONS.	7/16/2021	R.DURBIN	

DIMENSIONS IN: IN [MM] (REF)	SCALE - NTS -	DRAFTER Z.ZAJAC	DATE 11/25/19	<b>MITSUBISHI ELECTRIC</b>
<small>PROPRIETARY</small> <small>This document is the property of Mitsubishi Electric Power Products, Inc. and contains proprietary and confidential information which must not be duplicated, used or disclosed other than as expressly authorized by Mitsubishi Electric Power Products, Inc.</small>		APPROVED A.WINTER	DATE 11/25/19	
CORE/REFERENCE DRAWING (IF APPLICABLE)		DWG. NO. <b>UD-101107</b>		SHEET 3 OF 6 REV. <b>5</b>



REVISIONS
0. INITIAL RELEASE Z.ZAJAC 11/25/2019
2. CHANGED TITLE TO 1.5/1.6MVA Z.ZAJAC 12/11/2019
3. UPDATED DIMENSIONS AND VIEWS FOR NEW DOOR J.PRY-SOCK 2/27/20
4. ADDED UVR CONNECTION TO SHEET 6 J.MOTT 7/10/2020
5. ADDED BUS HOLE DIAMETER AND THICKNESS DIMENSIONS R.DURBIN 7/16/21

DIMENSIONS IN: IN [MM]	SCALE - NTS -	DRAFTER Z.ZAJAC	DATE 11/25/2019	<b>MITSUBISHI ELECTRIC</b>
PROPRIETARY <small>This document is the property of Mitsubishi Electric Power Products, Inc. and contains proprietary and confidential information which must not be duplicated, used or disclosed other than as expressly authorized by Mitsubishi Electric Power Products, Inc.</small>		APPROVED A.WINTER	DATE 11/25/2019	
CORE [REFERENCE] DRAWING		SHEET 4 OF 6		DWG. NO. <b>UD-101107</b>
				REV. <b>5</b>

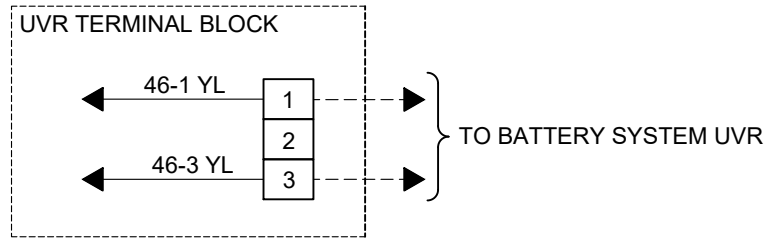
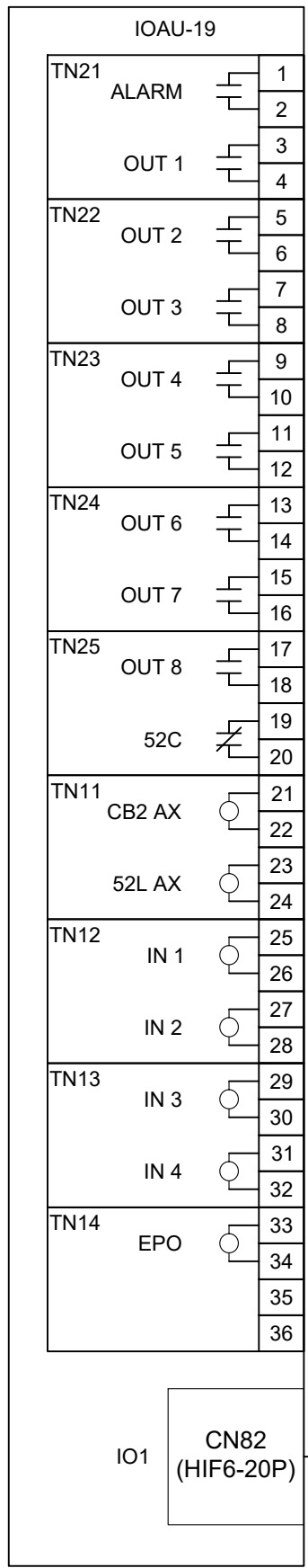


REVISIONS
0. INITIAL RELEASE ZZAJAC 11/25/2019
2. CHANGED TITLE TO 1.5/1.6MVA ZZAJAC 12/11/2019
3. UPDATED DIMENSIONS AND VIEWS FOR NEW DOOR J.PRY-SOCK 2/27/20
4. ADDED I.V.R. CONNECTION TO SHEET 6 J.MOTT 7/10/2020
5. ADDED BUS HOLE DIAMETER AND THICKNESS DIMENSIONS R.DURBIN 7/16/21

DIMENSIONS IN: IN [MM]	SCALE - NTS -	DRAFTER Z.ZAJAC	DATE 11/25/2019	<b>MITSUBISHI ELECTRIC</b>	
<small>PROPRIETARY</small> <small>This document is the property of Mitsubishi Electric Power Products, Inc. and contains proprietary and confidential information which must not be duplicated, used or disclosed other than as expressly authorized by Mitsubishi Electric Power Products, Inc.</small>		APPROVED A.WINTER	DATE 11/25/2019		TITLE 9900D 1.5/1.6MVA OUTLINE DRAWING
CORE [REFERENCE] DRAWING				DWG. NO. <b>UD-101107</b>	SHEET 5 OF 6 REV. <b>5</b>

I/O ASSIGNMENTS	
ALARM	SUMMARY ALARM
*OUT 1	LOAD ON BYPASS
*OUT 2	LOAD ON INVERTER
*OUT 3	BATTERY OPERATION
*OUT 4	CONVERTER OPERATION
*OUT 5	BATTERY LOW VOLTAGE
*OUT 6	OVERLOAD
*OUT 7	SPARE
*OUT 8	TOTAL ALARM
52C	52C CLOSED
CB2 AX	BATTERY BREAKER PANEL
52L AX	LOAD CIRCUIT SWITCH
*IN 1	REMOTE INVERTER START
*IN 2	REMOTE INVERTER STOP
*IN 3	BATTERY TEMP. HIGH
*IN 4	POWER DEMAND
EPO	REMOTE EPO
35/36	DO NOT USE

\*USER PROGRAMMABLE INPUT/OUTPUT



REVISIONS
0. INITIAL RELEASE ZZAJAC 11/25/2019
1. CHANGED TITLE TO 1.5/1.6MVA ZZAJAC 12/11/2019
2. UPDATED DIMENSIONS AND VIEWS FOR NEW DOOR J.PRY-SOCK 2/27/20
3. ADDED UVR CONNECTION TO SHEET 6 J.MOTT 7/10/2020
4. ADDED BUS HOLE DIAMETER AND THICKNESS DIMENSIONS R.DURBIN 7/16/21

DIMENSIONS IN: IN [MM]	SCALE - NTS -	DRAFTER Z.ZAJAC	DATE 11/25/2019	<p><b>MITSUBISHI ELECTRIC</b></p>
<small>PROPRIETARY</small> <small>This document is the property of Mitsubishi Electric Power Products, Inc. and contains proprietary and confidential information which must not be duplicated, used or disclosed other than as expressly authorized by Mitsubishi Electric Power Products, Inc.</small>		APPROVED A.WINTER	DATE 11/25/2019	
CORE [REFERENCE] DRAWING				<p>TITLE</p> <p>9900D 1.5/1.6MVA OUTLINE DRAWING</p>
DWG. NO.			SHEET 6 OF 6	REV.
UD-101107				5