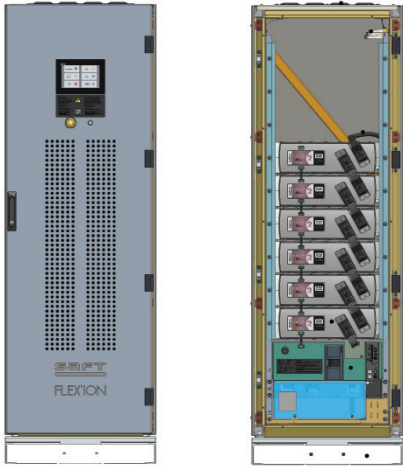


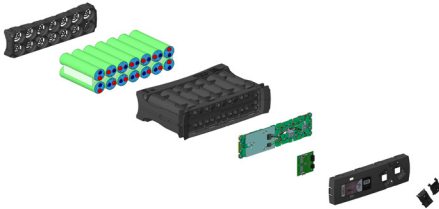
BCLO7 LiB CABINET DATA SHEET



BATTERY MANAGEMENT MODULE



BATTERY MODULE



FEATURES & BENEFITS

- 1** SUPERIOR SAFETY
life and enhanced dependability
- 2** LOW ENVIRONMENTAL FOOTPRINT
minimal cobalt present (<1% cell weight)
- 3** WARRANTY
5 year warranty
- 4** CONSERVES ELECTRICITY & WATER
operates at 95°F (35°C)
- 5** CABINET SHIPS FULLY POPULATED
saves on installation costs

ABOUT US

Based in Pittsburgh, PA, the Critical Power Solutions Division (CPSD) is a business unit of [Mitsubishi Electric Power Products, Inc. \(MEPPI\)](http://Mitsubishi Electric Power Products, Inc. (MEPPI)). Mitsubishi Electric has been manufacturing precision engineered highly reliable uninterruptible power supplies since 1964 and introduced a line of cooling systems in 2021. CPSD's operations include Project Application Engineering, Design Engineering, Service & Support, Manufacturing & Warehousing, Quality, Sales and Marketing.

MANUFACTURER DATA

Manufacturer	Soft
Product Series	Flex'ion Gen2 Li-Ion Battery System

BATTERY DATA

Battery Type	Super Lithium Iron Phosphate (SLFP)
Module type	46 PFe-G2
Number of Modules	6
Nominal Voltage	276 V
Capacity	28 Ah
Energy	7.7 kWh
Design Life	20 years
Max Discharge Power (kW)	100 for 3 min
Max No. Paralleled Strings	18 per system

OPERATION

Operating Voltage	210 to 319 VDC
Operating Temperature	32°F to 95°F (0°C to 35°C)
Storage Temperature	68°F to 104°F (20°C to 40°C)
Cycle Life @ 100% depth-of-discharge	>1000
Communications	MODbus, CANopen, Ethernet
Certifications	UL 1973, UL9540A

GENERAL

Weight	590 lb (fully populated)
Dimensions (WxDxH)	24"W x 21"D x 68"H
Cable Entry Point	Top or bottom cabinet access
Display	7" HMI touchscreen

APPLICABLE UPS from MITSUBISHI ELECTRIC



1100B

Pairing this battery with the Mitsubishi Electric 1100B provides you long runtimes with a minimal number of cabinets and reduced maintenance.



OUR SERVICES

Mitsubishi Electric's highly reliable and efficient products are backed by a full range of Field and Factory Services:

-  Factory Testing & Startup
-  24/7 Customer Support
-  Maintenance & Repairs
-  Batteries & Battery Services