



## UNINTERRUPTIBLE POWER SUPPLIES

Since 1964, Mitsubishi Electric has manufactured precision-engineered Uninterruptible Power Supplies (UPS) to protect mission critical equipment against the ravages caused by power fluctuations and outages. Mitsubishi Electric UPS systems are highly regarded for their unsurpassed quality, reliability, and efficiency, evidenced by the following facts:

- Mitsubishi Electric achieves the highest levels of reliability among backup power suppliers at 99.9994%
- A Mitsubishi Electric UPS (Summit 750 kVA) holds the highest efficiency rating (98%) for the AC-Double Conversion (VFI) category on the Energy Star web site
- Mitsubishi Electric UPSs consistently handle higher loads in smaller footprints than competitive units
- A UPS from Mitsubishi Electric offers lower cost of ownership over its lifetime compared to competitors
- A vast inventory of readily available product in the US allows for fast deployment



## BATTERIES AND DC POWER SOLUTIONS

Choosing the right DC backup power solution is crucial for optimum performance of your UPS. With our years of experience and multiple storage solution offerings, we can help you determine the power and performance you need from your battery backup system. We offer:

- Proven lithium ion battery solutions utilizing different chemistries from reliable providers such as Samsung and Saft
- Full range of VRLA battery solutions from top vendors including EnerSys, Deka, C&D Technologies, and Narada
- VLA (Wet Cell) solutions from EnerSys & C&D Technologies
- Pure lead batteries



# UPS PRODUCT LINES

	Single Phase	3 Phase						
Model	7011B	1100A	1100B	9900 AEGIS	9900B	SUMMIT	9900CX	9900D
Input Voltage	240/208	208	208	480	480	480	480	480
kVA	Output Voltage							
6	240/208							
8	240/208							
10	240/208	208	208					
12	240/208							
20		208	208					
30		208	208					
40		208	208					
50		208	208					
60			208					
70			208					
80			208	480				
100				480				
150				480				
160				480				
225				480				
300					480			
500					480	480		
750					480	480		
1050							480	
1200								480
1250								480
1400							480	
1500							480	480
1600								480
1750							480	
2000								480
2100							480	
SMS/MMS	SMS	SMS	SMS	SMS/MMS	SMS/MMS	SMS/MMS	SMS/MMS	SMS/MMS

# MARKETS & APPLICATIONS





## MAINTENANCE BYPASSES AND SWITCHGEAR

Mitsubishi Electric offers a full line of peripherals including external maintenance bypasses and switchgear for all of its UPS offerings complemented by a talented and experienced team to help you decide the best options for your particular application.

- Standard maintenance bypass designs for shorter lead times
- Full custom designs to meet your specifications
- UPS paralleling cabinets
- UL 891 and UL 1558 designs available
- Breaker vendor agnostic
- Available with options such as power monitoring, output distribution, load centers, and transformers



## CUSTOM SOLUTIONS

Mitsubishi Electric's Critical Power Solutions Division (CPSD) has a proven history of delivering customized backup power solutions to suit a customer's specific needs. A dedicated group of project application engineers are charged with the task of planning, managing, and following individual projects and are intimately involved in a number of different tasks, such as:

- Managing the project timeline, including delivery, installation, startup, commissioning, and equipment turnover
- Reviewing product specifications & recommending equipment
- Verifying the proposed equipment meets the scope of the project
- Developing submittal package for customer approval Answering design questions
- Answering design questions

Mitsubishi Electric remains committed to designing specialized integral power solutions that not only include traditional configurations, but also those involving skids and containers, and one-of-a-kind solutions such as the innovative MegaPod®, pictured here.



## SERVICE & SUPPORT

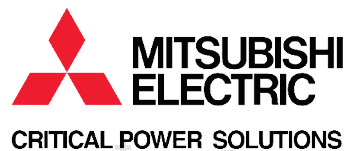
With technicians across North America, Mitsubishi Electric offers around the clock protection, keeping your operations safe against outages, grid decay and other critical threats to the flow of business. Offerings include:

- 24/7 communication with experienced technical support staff and prompt on-site service
- Routine maintenance checks and complete battery or flywheel testing and thermographic imaging
- Comprehensive maintenance inspections including UPS diagnostic reports
- Access to spare parts inventory from a network of regional depots
- Facilitation of multi-vendor services

From commissioning through maintenance, battery replacements, and UPS upgrades, Mitsubishi Electric serves as a trusted partner throughout the product lifecycle. With our highly skilled technicians, 24/7 technical support, and premier equipment, Mitsubishi Electric possesses the resources necessary to protect you from the unexpected.



## DON'T LET YOUR BUSINESS GO DARK®



[mitsubishicritical.com](http://mitsubishicritical.com)  
[CPSsales@meppi.com](mailto:CPSsales@meppi.com)

800-887-7830  
724-772-2555



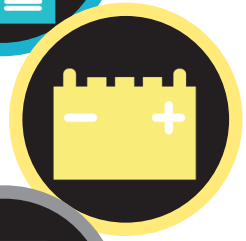
# CAPABILITIES

*Providing electrical products and service solutions for mission critical businesses*



Uninterruptible Power Supplies

Batteries & DC Power Solutions



Maintenance Bypasses & Switchgear



Custom Solutions



Service & Support