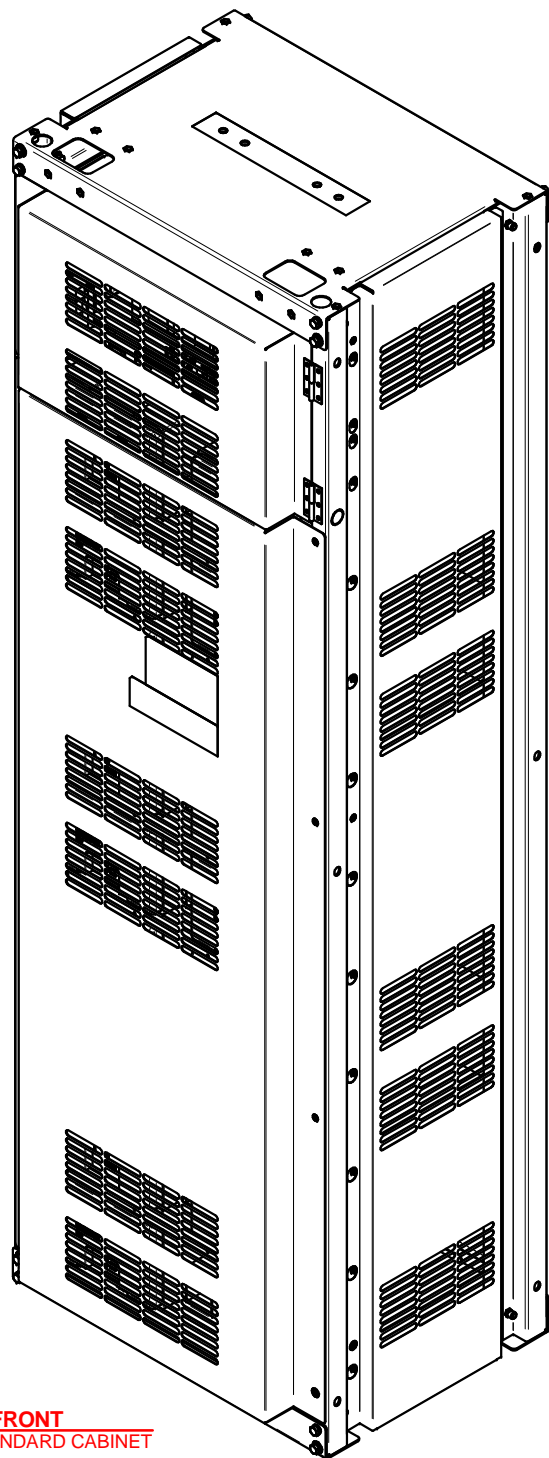
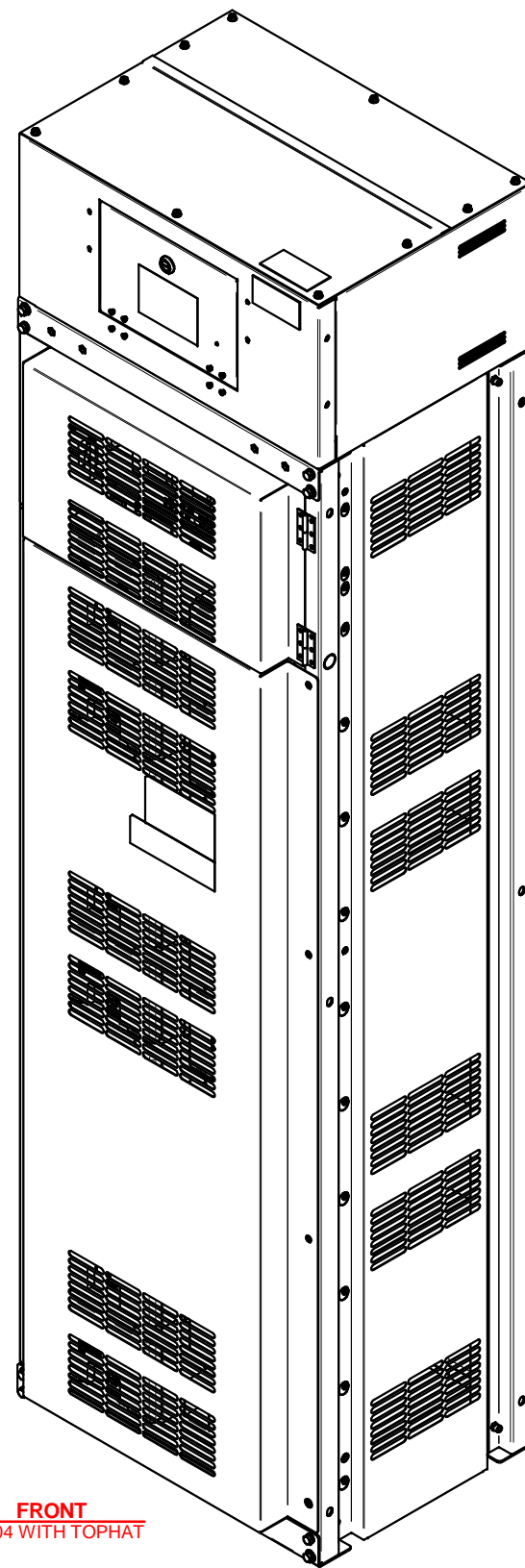


FRONT
BCL04 STANDARD CABINET



FRONT
BCL04 WITH TOPHAT



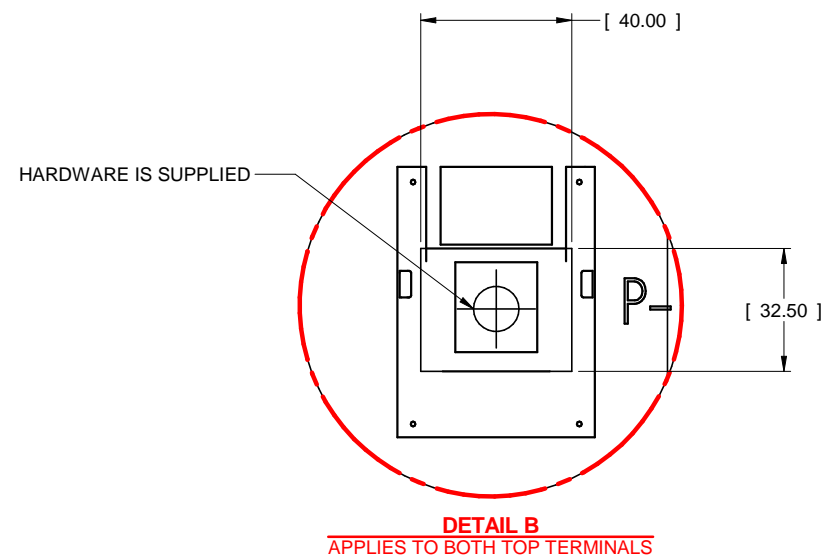
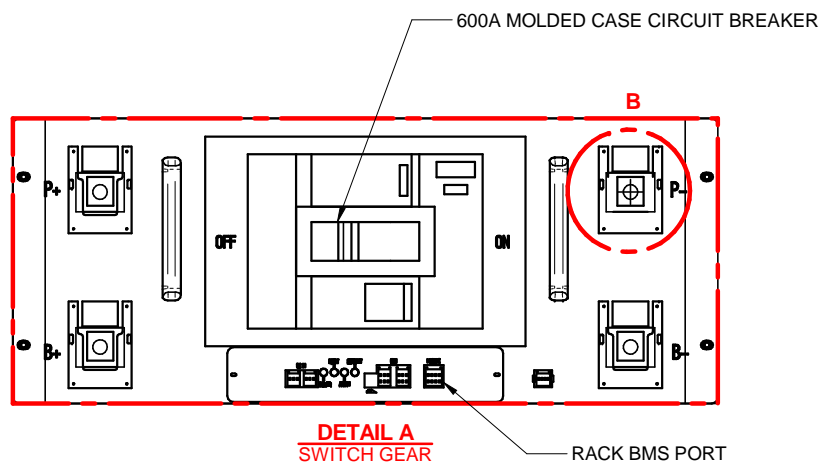
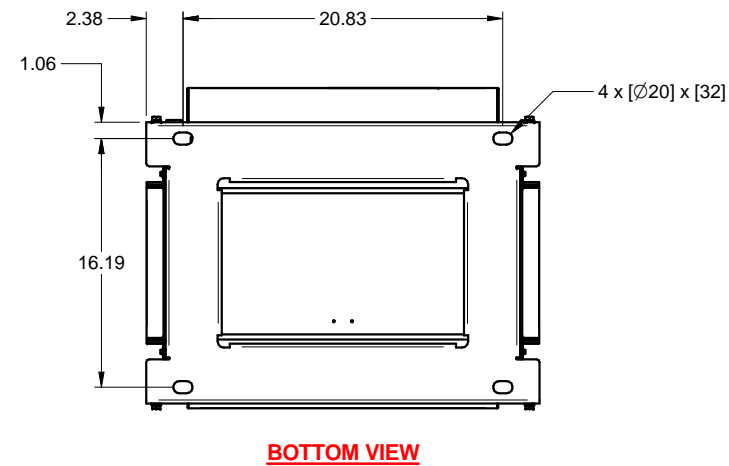
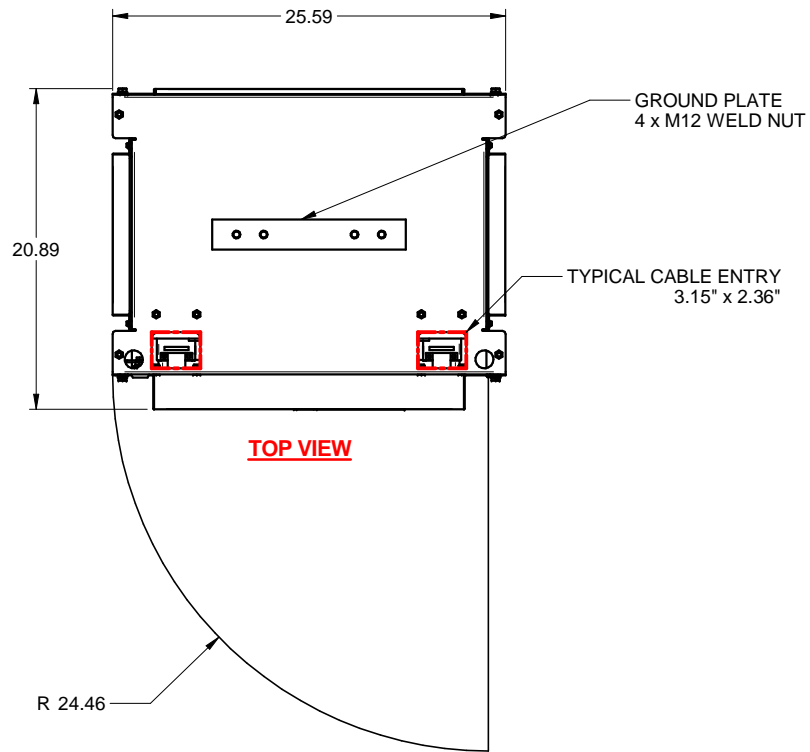
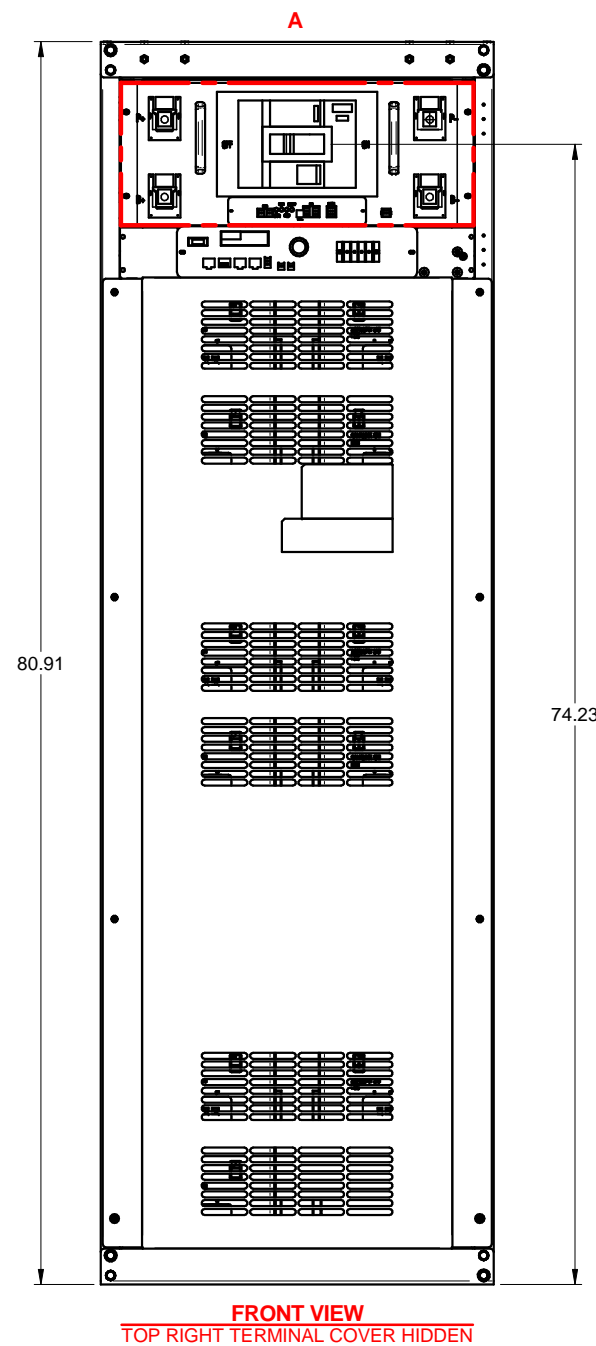
BCL04 LITHIUM BATTERY CABINET OPTIONS

REVISIONS	DIMENSIONS IN:	SCALE	DRAFTER	DATE
0. INITIAL RELEASE ECN 1256 E.MACDONALD 05/01/2019	IN [MM] (REF)	- NTS -	Z.ZAJAC	10/30/19
1. CHANGED CABINET TYPE; UPDATED PER ECN 1396 Z.ZAJAC 7/17/2019	PROPRIETARY This document is the property of Mitsubishi Electric Power Products, Inc. and contains proprietary and confidential information which must not be duplicated, used or disclosed other than as expressly authorized by Mitsubishi Electric Power Products, Inc.		A.WINTERS	10/30/19
2. CHANGED TITLE AND LABELING TO BCL04; UPDATED PER ECN 1511 Z.ZAJAC 9/25/19				
3. CHANGED TITLE AND LABELING TO BCL04; UPDATED PER ECN 1511 Z.ZAJAC 9/25/19				
4. ADDED VIEWS AND NOTE 4 & 5 TO SHEET 1 Z.ZAJAC 1/23/2020				
5. UPDATED VEIWS, ADDED OVERALLS. J.PRY-SOCK 2/11/2020				
6. ADDED CONDUIT ENTRY FOR STANDARD CABINET Z.ZAJAC 4/14/2020				
7. ADDED EXTRA SHEETS TO SHOW BCL04 OPTIONS Z.ZAJAC 4/16/2020				
8. UPDATED VIEWS TO SHOW I/O CONTROL BOX TO BE ROTATED 90° Z.ZAJAC 9/4/20				
9. UPDATED DRAWING TO SHOW NEW TOPHAT DESIGN Z.ZAJAC 10/22/20				
10. ADDED DIMENSION TO BREAKER Z.ZAJAC 1/6/23				
11. CHANGED NOTES 4 AND 6 ON SHEET 2 Z.ZAJAC 4/17/23				

CORE/REFERENCE DRAWING (IF APPLICABLE)	
--	--

APPROVED	DATE
A.WINTERS	10/30/19

	MITSUBISHI ELECTRIC
TITLE	
BCL04 LITHIUM BATTERY CABINET	
DWG. NO.	SHEET 1 OF 4
UD-100945	REV. 11

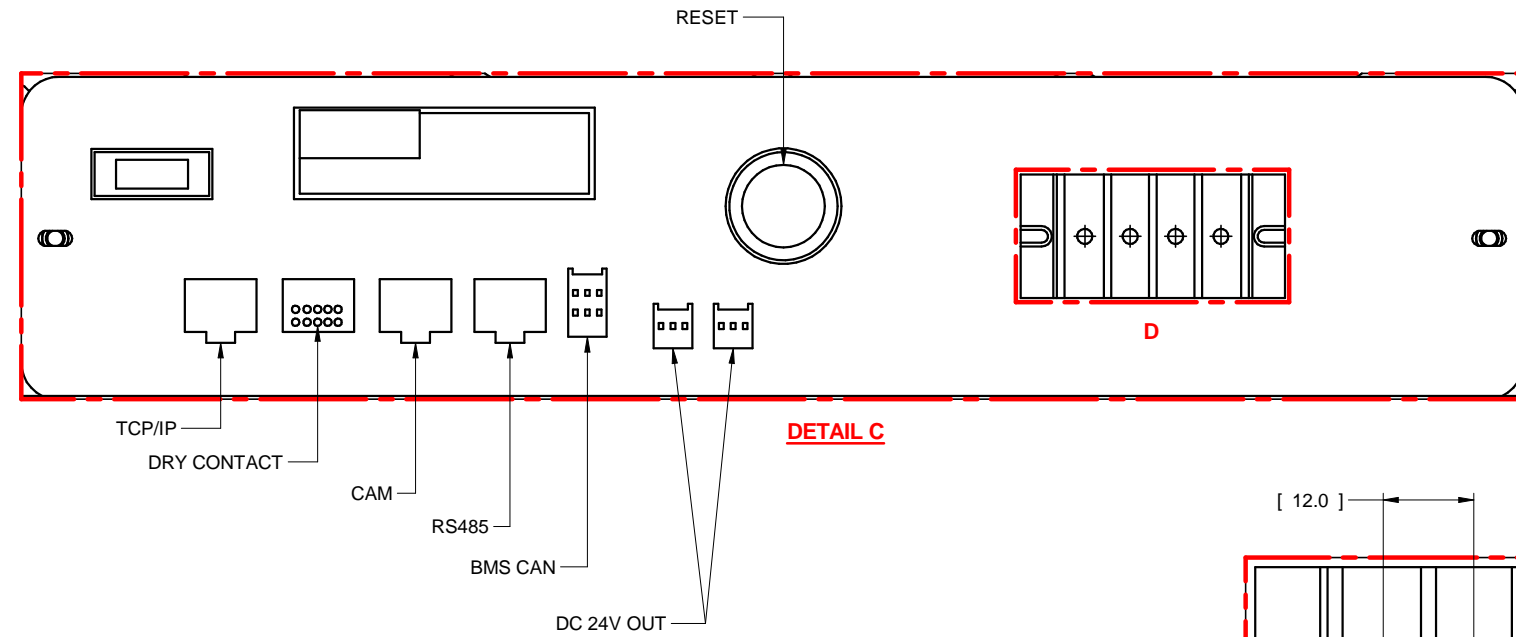


- NOTES:
- 120V CONTROL POWER SUPPLIED AND INSTALLED BY OTHERS.
 - 8 SIGNAL WIRES REQUIRED (6 SIGNAL WIRES FOR 9900C/CX) 22-16 AWG WIRE SIZE. (SUPPLIED AND INSTALLED BY OTHERS)
 - RACK SPECIFICATIONS.
184KW CONTINUOUS, 257KW MAX POWER
340-582 VDC OPERATING VOLTAGE RANGE (PROTECTION LIMIT)
 - ALL FOUR CORNERS OF EVERY CABINET SHALL BE ANCHORED TO FLOOR (BY OTHERS).
 - APPLY "NO-OX" GREASE TO BATTERY TERMINALS.
 - TOP HAT IS A FIELD INSTALLED ITEM (BY OTHERS).

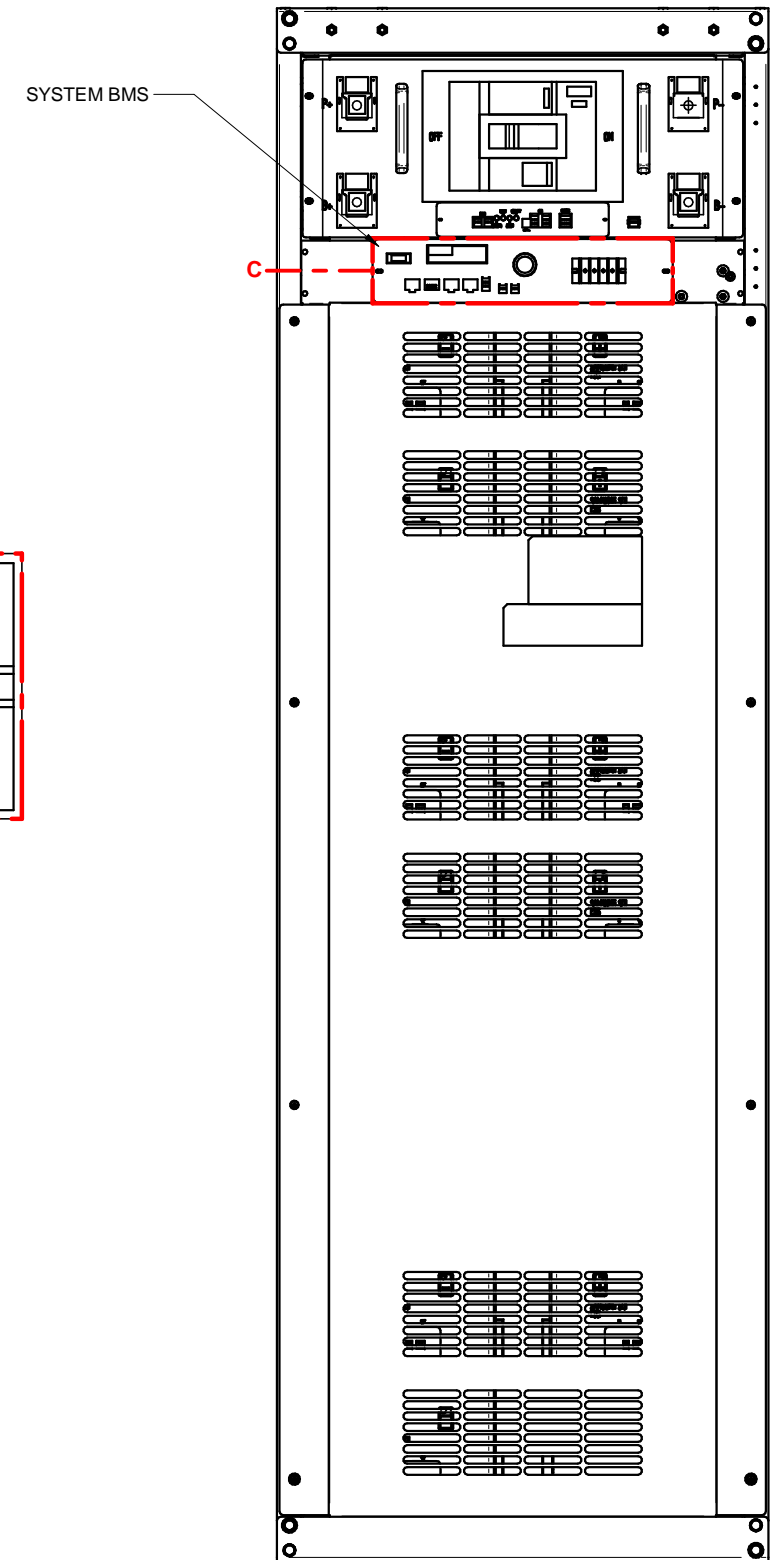
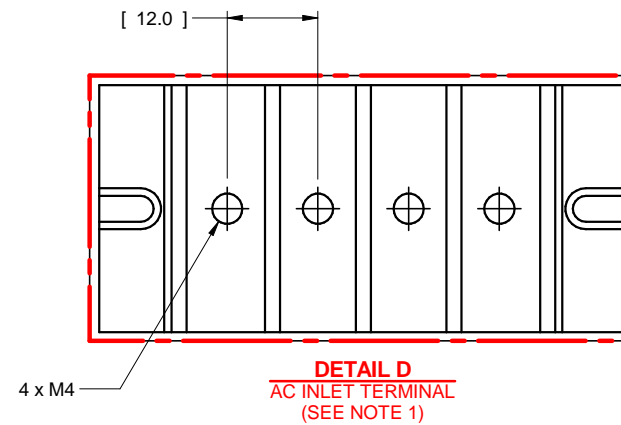
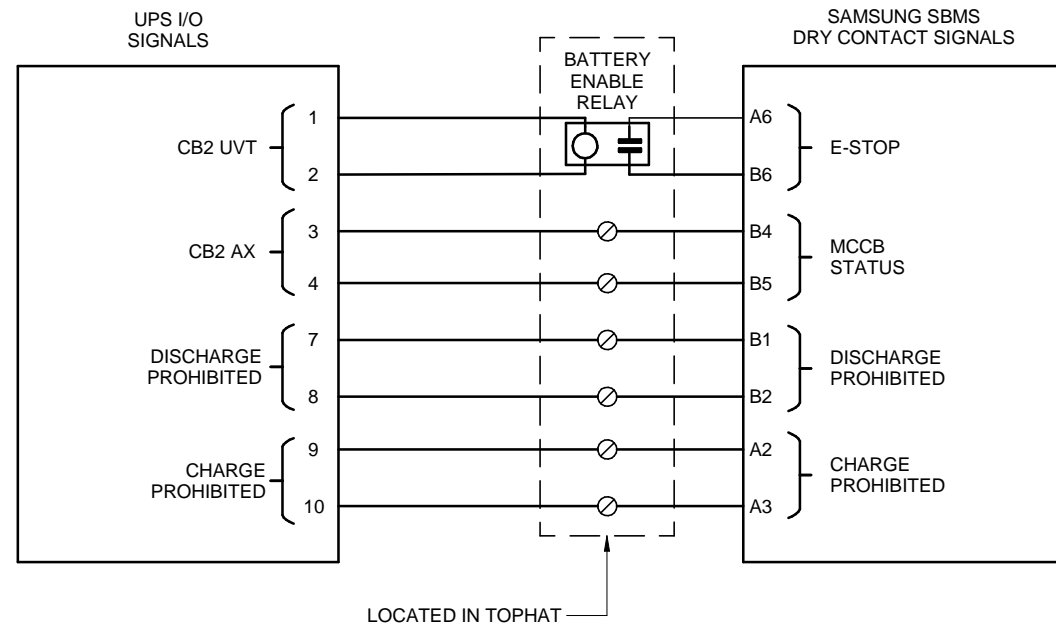
BCL04 STANDARD CABINET

REVISIONS	DIMENSIONS IN: IN [MM] (REF)	SCALE - NTS -	DRAFTER Z.ZAJAC	DATE 10/30/19
0. INITIAL RELEASE ECN 1256 E.MACDONALD 05/01/2019	<p>PROPRIETARY</p> <p>This document is the property of Mitsubishi Electric Power Products, Inc. and contains proprietary and confidential information which must not be duplicated, used or disclosed other than as expressly authorized by Mitsubishi Electric Power Products, Inc.</p>		APPROVED A.WINTERS	DATE 10/30/19
1. CHANGED CABINET TYPE: UPDATED PER ECN 1396 Z.ZAJAC 7/17/2019			TITLE BCL04 LITHIUM BATTERY CABINET	
2. CHANGED TITLE AND LABELING TO BCL04; UPDATED PER ECN 1511 Z.ZAJAC 9/25/19			DWG. NO. UD-100945	
3. CHANGED TITLE AND LABELING TO BCL04; UPDATED PER ECN 1511 Z.ZAJAC 9/25/19			SHEET 2 OF 4	
4. ADDED VIEWS AND NOTE 4 & 5 TO SHEET 1 Z.ZAJAC 1/23/2020			REV. 11	
5. UPDATED VIEWS, ADDED OVERALLS, J.PRY-SOCK 2/11/2020				
6. ADDED CONDUIT ENTRY FOR STANDARD CABINET Z.ZAJAC 4/14/2020				
7. ADDED EXTRA SHEETS TO SHOW BCL04 OPTIONS Z.ZAJAC 4/16/2020				
8. UPDATED VIEWS TO SHOW I/O CONTROL BOX TO BE ROTATED 90° Z.ZAJAC 9/4/20				
9. UPDATED DRAWING TO SHOW NEW TOPHAT DESIGN Z.ZAJAC 10/22/20				
10. ADDED DIMENSION TO BREAKER Z.ZAJAC 1/6/23				
11. CHANGED NOTES 4 AND 6 ON SHEET 2 Z.ZAJAC 4/17/23				

<p>MITSUBISHI ELECTRIC</p>	
<p>TITLE BCL04 LITHIUM BATTERY CABINET</p>	
<p>DWG. NO. UD-100945</p>	
<p>SHEET 2 OF 4</p>	
<p>REV. 11</p>	



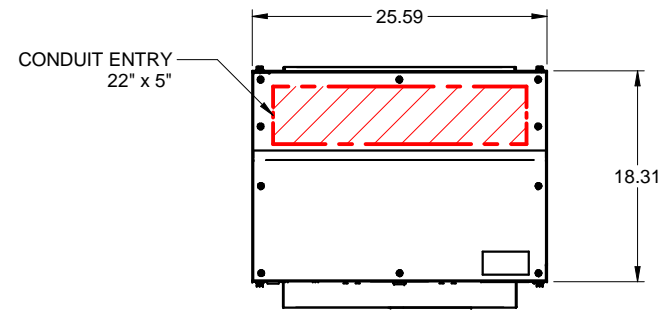
TYPICAL SIGNAL CONNECTIONS TO UPS
SEE NOTE 2



SYSTEM BMS INTERFACE

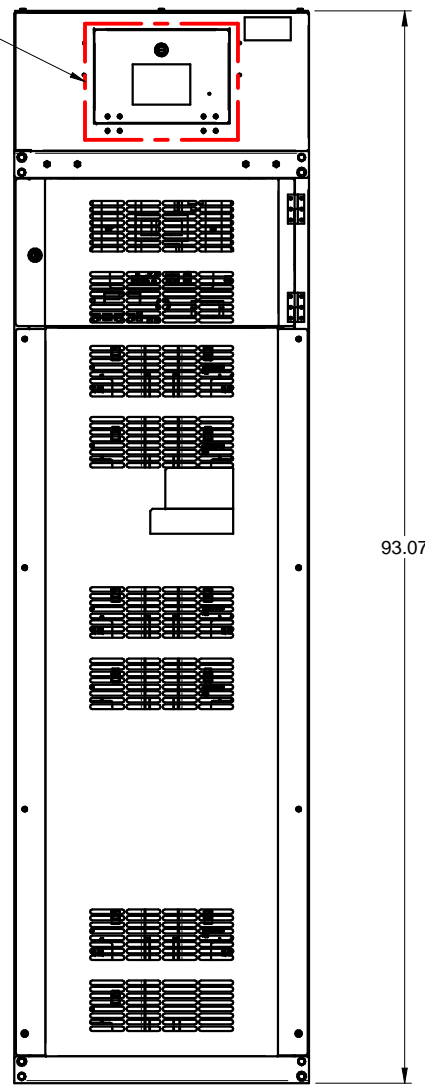
REVISIONS	DIMENSIONS IN:	SCALE	DRAFTER	DATE
0. INITIAL RELEASE ECN 1256 E.MACDONALD 05/01/2019	IN [MM] (REF)	- NTS -	Z.ZAJAC	10/30/19
1. CHANGED CABINET TYPE: UPDATED PER ECN 1396 Z.ZAJAC 7/17/2019	PROPRIETARY		A.WINTERS	10/30/19
2. CHANGED TITLE AND LABELING TO BCL04; UPDATED PER ECN 1511 Z.ZAJAC 9/25/19	This document is the property of Mitsubishi Electric Power Products, Inc. and contains proprietary and confidential information which must not be duplicated, used or disclosed other than as expressly authorized by Mitsubishi Electric Power Products, Inc.			
3. CHANGED TITLE AND LABELING TO BCL04; UPDATED PER ECN 1511 Z.ZAJAC 9/25/19	CORE/REFERENCE DRAWING (IF APPLICABLE)			
4. ADDED VIEWS AND NOTE 4 & 5 TO SHEET 1 Z.ZAJAC 1/23/2020				
5. UPDATED VEWS, ADDED OVERALLS. J.PRY-SOCK 2/11/2020				
6. ADDED CONDUIT ENTRY FOR STANDARD CABINET Z.ZAJAC 4/14/2020				
7. ADDED EXTRA SHEETS TO SHOW BCL04 OPTIONS Z.ZAJAC 4/16/2020				
8. UPDATED VIEWS TO SHOW I/O CONTROL BOX TO BE ROTATED 90° Z.ZAJAC 9/4/20				
9. UPDATED DRAWING TO SHOW NEW TOPHAT DESIGN Z.ZAJAC 10/22/20				
10. ADDED DIMENSION TO BREAKER Z.ZAJAC 1/6/23				
11. CHANGED NOTES 4 AND 6 ON SHEET 2 Z.ZAJAC 4/17/23				

<p>MITSUBISHI ELECTRIC</p>	
<p>TITLE BCL04 LITHIUM BATTERY CABINET</p>	
DWG. NO. UD-100945	REV. 11



TOP

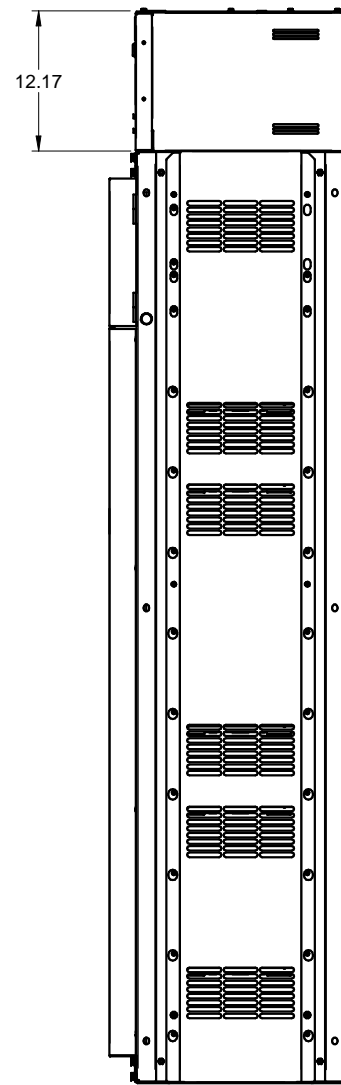
I/O SIGNAL INTERFACE, DATA LOGGER, AND TCP/IP CONNECTION LOCATED HERE



BCL04 WITH TOPHAT

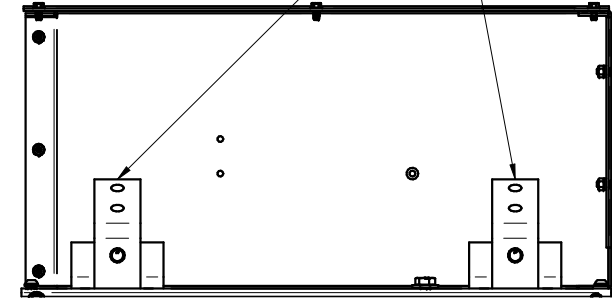
-1 PER RACK

I/O SIGNAL INTERFACE, DATA LOGGER, AND TCP/IP CONNECTION LOCATED IN MASTER RACK (1 PER SYSTEM)
-UA-100918

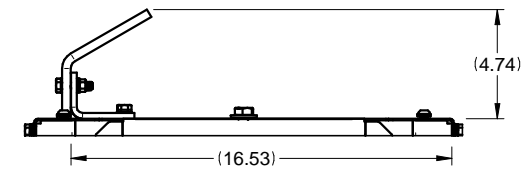


RIGHT SIDE

PROVISION FOR (2) NEMA 2 HOLE CONNECTIONS PER POLE



FRONT VIEW OF TOPHAT
FRONT PANEL HIDDEN



BUSS TABS SIDE ELEVATION
TOPHAT HIDDEN

BCL04 WITH TOPHAT

REVISIONS	DIMENSIONS IN:	SCALE	DRAFTER	DATE
0. INITIAL RELEASE ECN 1256 E.MACDONALD 05/01/2019	IN [MM] (REF)	- NTS -	Z.ZAJAC	10/30/19
1. CHANGED CABINET TYPE: UPDATED PER ECN 1396 Z.ZAJAC 7/17/2019	PROPRIETARY This document is the property of Mitsubishi Electric Power Products, Inc. and contains proprietary and confidential information which must not be duplicated, used or disclosed other than as expressly authorized by Mitsubishi Electric Power Products, Inc.		A.WINTERS	10/30/19
2. CHANGED TITLE AND LABELING TO BCL04; UPDATED PER ECN 1511 Z.ZAJAC 9/25/19				
3. CHANGED TITLE AND LABELING TO BCL04; UPDATED PER ECN 1511 Z.ZAJAC 9/25/19				
4. ADDED VIEWS AND NOTE 4 & 5 TO SHEET 1 Z.ZAJAC 1/23/2020				
5. UPDATED VEWS, ADDED OVERALLS. J.PRY-SOCK 2/11/2020				
6. ADDED CONDUIT ENTRY FOR STANDARD CABINET Z.ZAJAC 4/14/2020				
7. ADDED EXTRA SHEETS TO SHOW BCL04 OPTIONS Z.ZAJAC 4/16/2020				
8. UPDATED VIEWS TO SHOW I/O CONTROL BOX TO BE ROTATED 90° Z.ZAJAC 9/4/20				
9. UPDATED DRAWING TO SHOW NEW TOPHAT DESIGN Z.ZAJAC 10/22/20				
10. ADDED DIMENSION TO BREAKER Z.ZAJAC 1/6/23				
11. CHANGED NOTES 4 AND 6 ON SHEET 2 Z.ZAJAC 4/17/23				

TITLE	DWG. NO.	SHEET 4 OF 4	REV.
BCL04 LITHIUM BATTERY CABINET	UD-100945		11

