

# MITSUBISHI 9900CX

## 1750kVA UPS DIRECT CABLE CONFIGURATION

CUSTOMER -


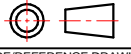
PROJECT NUMBER -

PROJECT LOCATION -

### TABLE OF CONTENTS

SHEET NO.	TITLE
01	COVER SHEET
02	OUTLINE
03	BUS CONNECTIONS
04	SYSTEM CONFIGURATION
05	SINGLE LINE
06	SINGLE LINE
07	
08	
09	
10	
11	
12	
13	
14	
15	

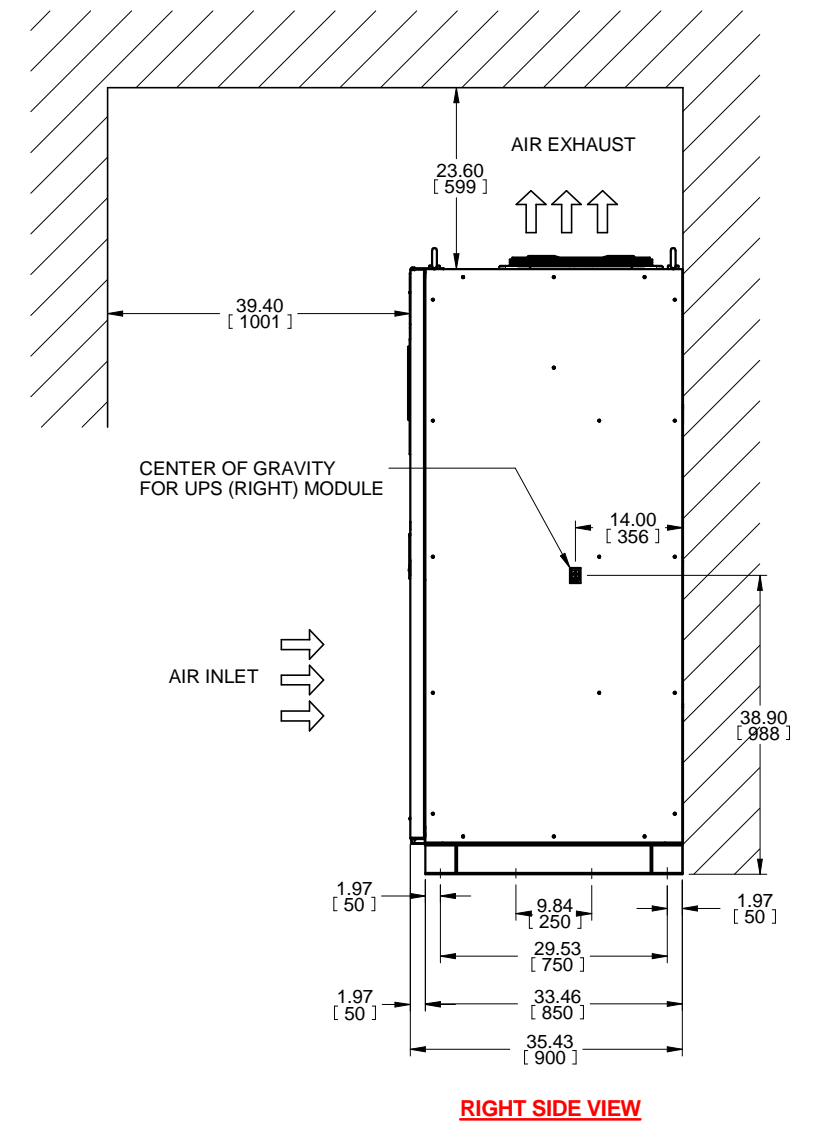
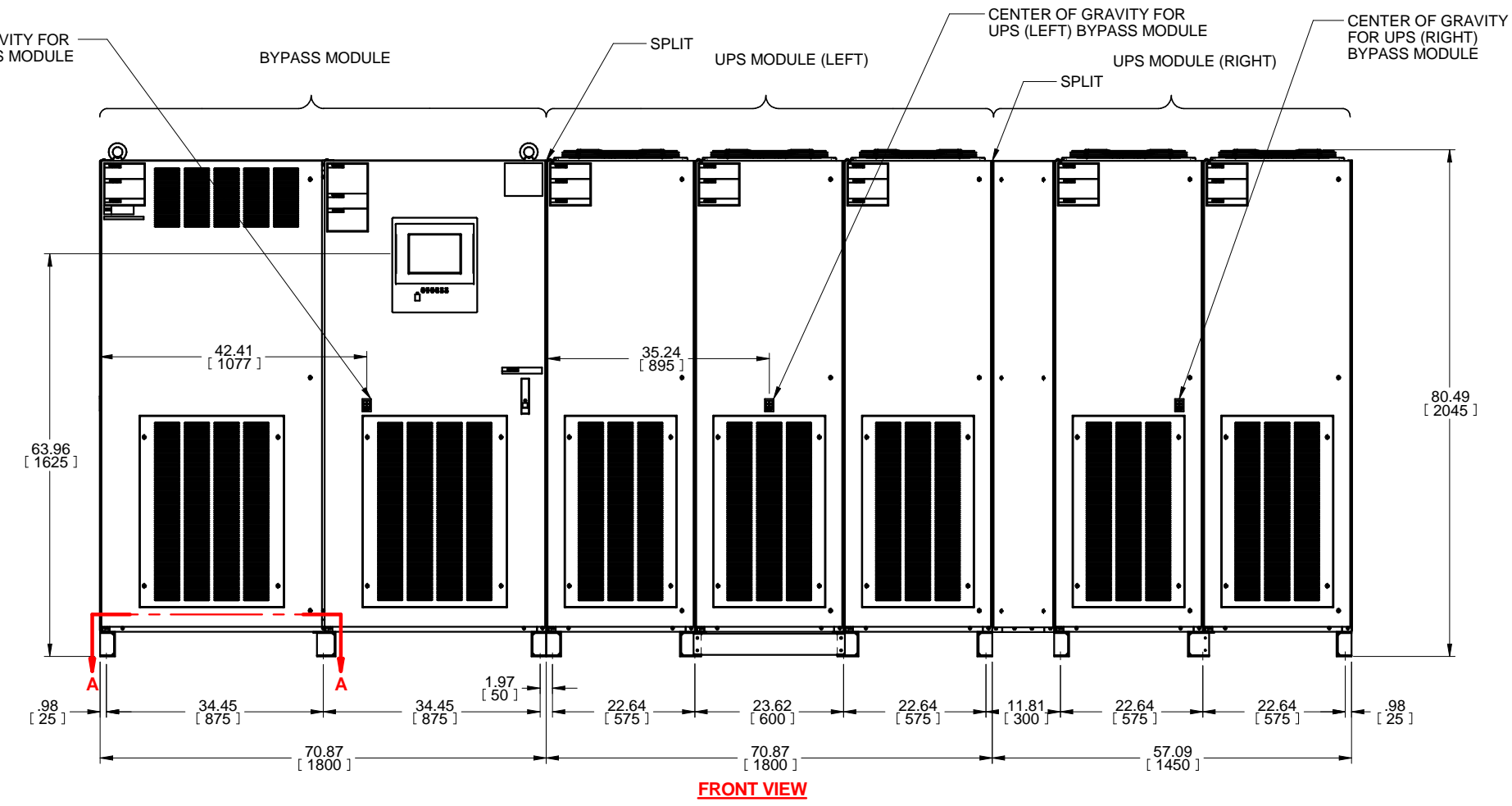
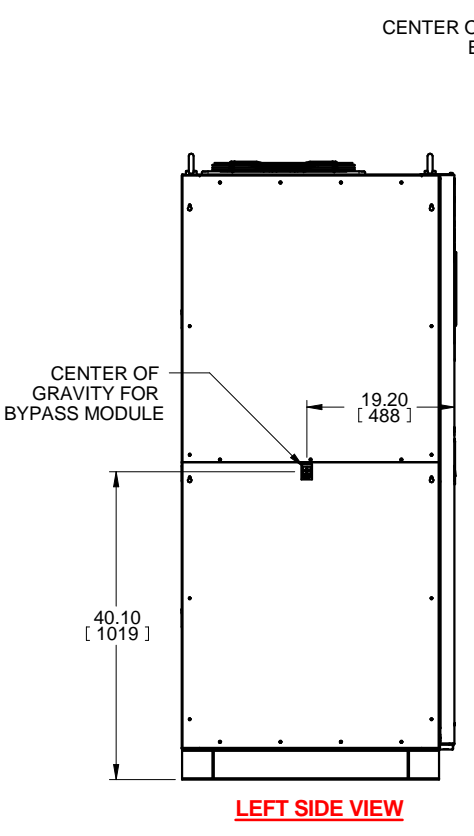
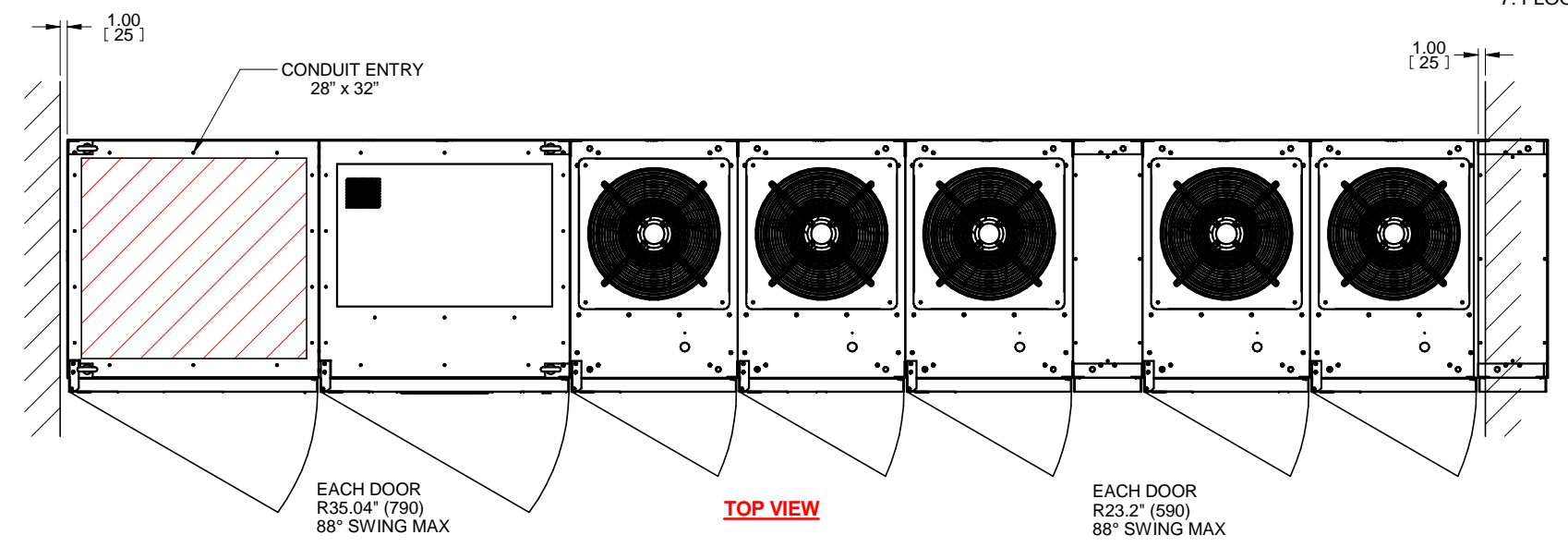
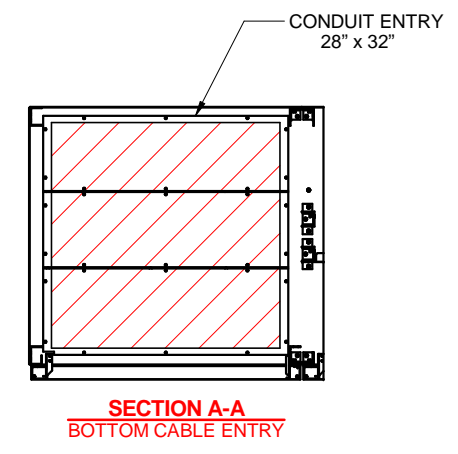
REVISIONS	DESCRIPTION
0.	INITIAL RELEASE GDJ 1/1/16/16
1.	RELEASED FOR CONSTRUCTION AJK 6/22/2017
2.	NOTE 7 ADDED. ZMZ 9/19/2017
3.	UPDATED BYPASS MODULE DIMENSIONS ZMZ 9/25/2017
4.	UPDATED BYPASS DRAWING ZMZ 2/2/2018
5.	DRAWING REVISED JM 3/26/2018
6.	ADDED COVER SHEET AND SHEET 3 ZMZ 10/8/2018
7.	REVISED FOR BYPASS MODULE WEIGHT M.OFFI ECN 900 11/2/2018
8.	UPDATED PER ECN 1021 Z.ZAJAC 1/15/2019
9.	ADJUSTED DIMENSIONS ACCURACY. UPDATED PER ECN 1393 Z.ZAJAC 7/15/2019

DIMENSIONS IN: IN [MM] (REF)	SCALE - NTS -	DRAFTER Z.ZAJAC	DATE 1/15/19	 <b>MITSUBISHI ELECTRIC</b>
<small>PROPRIETARY</small> <small>This document is the property of Mitsubishi Electric Power Products, Inc. and contains proprietary and confidential information which must not be duplicated, used or disclosed other than as expressly authorized by Mitsubishi Electric Power Products, Inc.</small>		APPROVED N.RIEMER	DATE 1/15/19	
CORE/REFERENCE DRAWING (IF APPLICABLE)				TITLE <b>OUTLINE</b> <b>9900CX 1750KVA</b>
DWG. NO. <b>UD-100573</b>		SHEET 1 OF 6		REV. <b>9</b>

TYPE: 9900CX  
 RATING: 1750kVA-3P3W-480V-60Hz  
 HEAT REJECTION: 187.5kBTUs/hour (TYPICAL)

NOTES

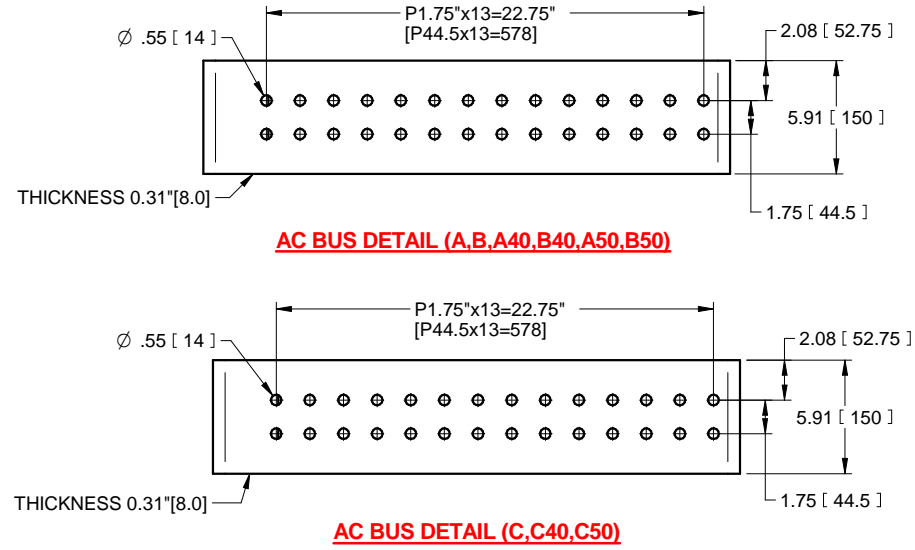
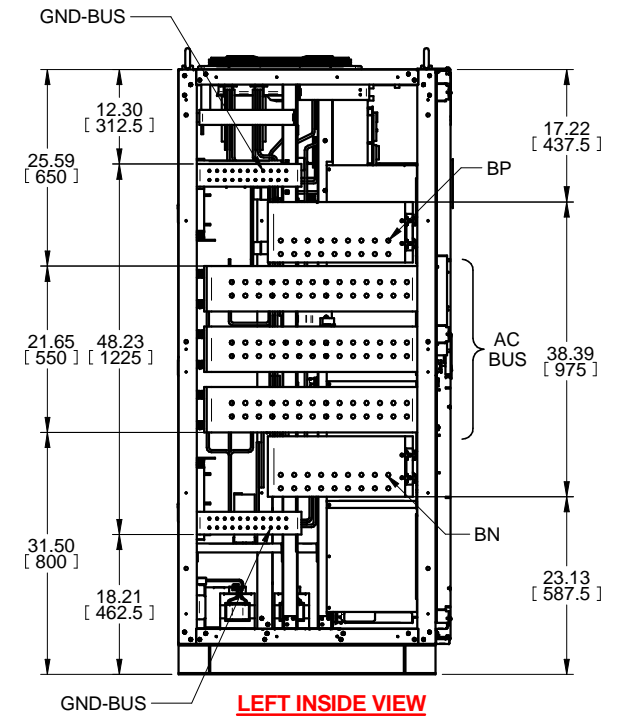
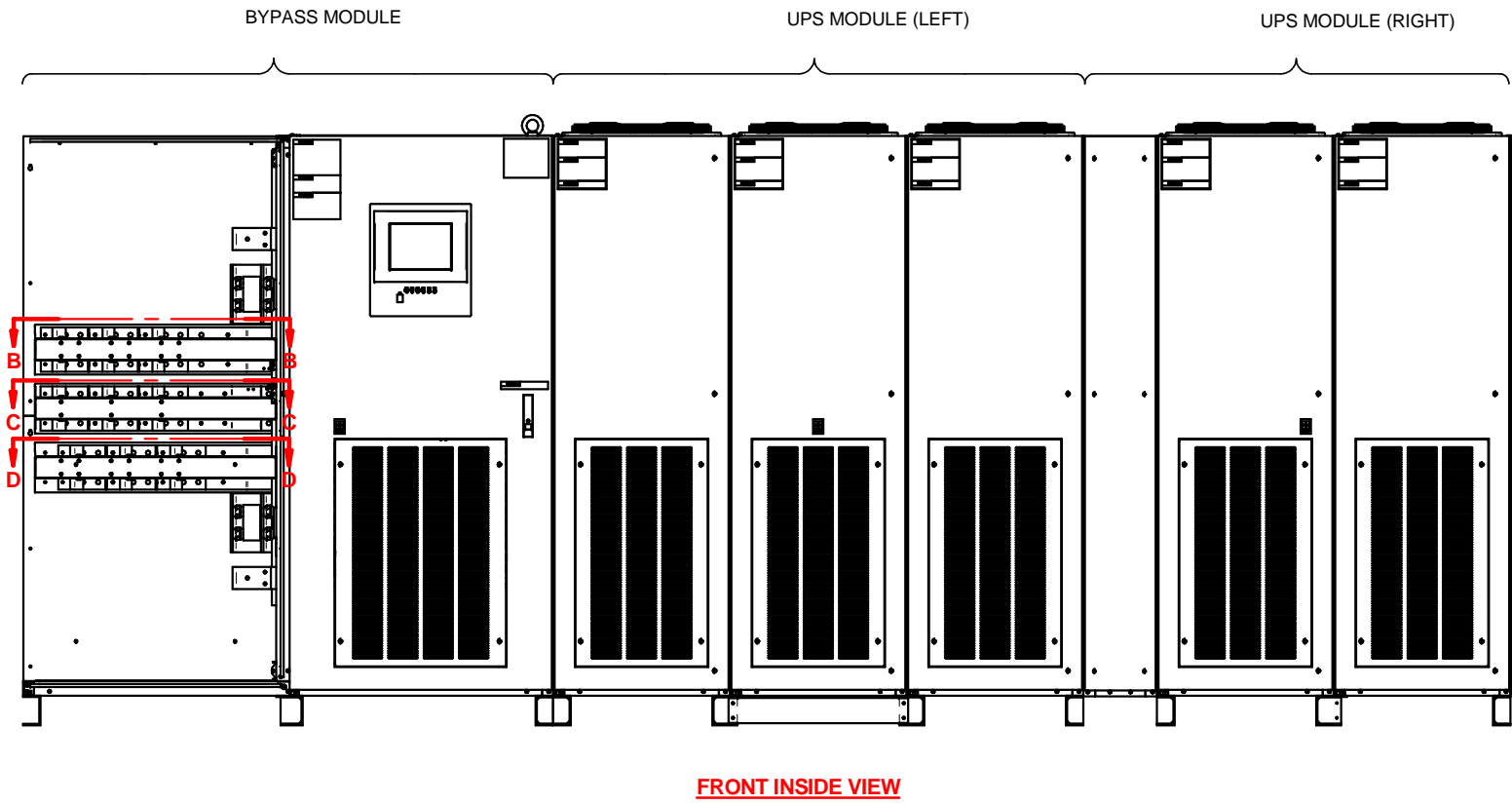
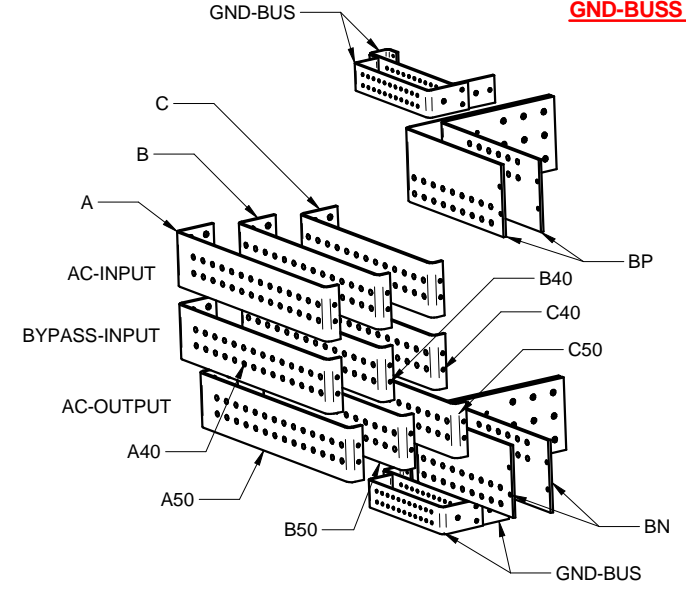
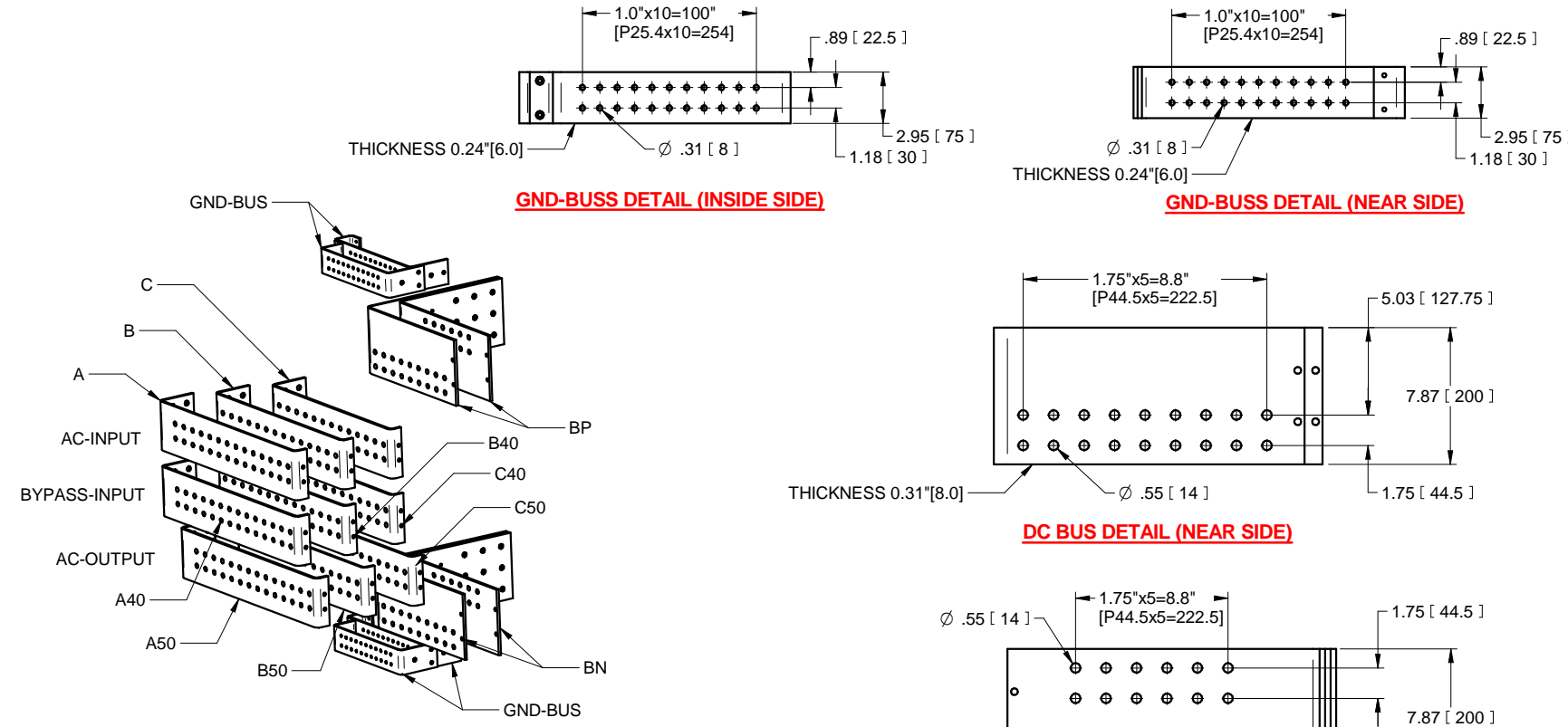
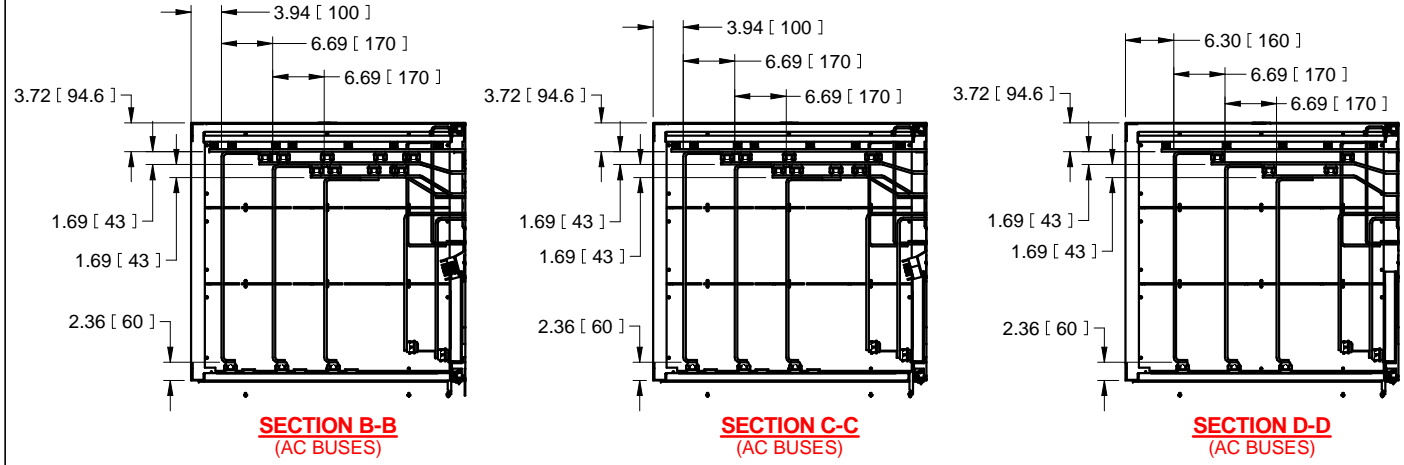
1. DIMENSIONS ARE SHOWN IN INCHES[MILLIMETERS].
2. SIDE SPACE '1"[25]' IS NOT REQUIRED WHEN SIDECARS ARE USED.
3. CABINET SHOULD BE MAINTAINED UPRIGHT WITHIN ± 15 ° DURING HANDLING.
4. EACH BASE CHANNEL HAS 2 OR 4 x 0.8"[20] DIAMETER HOLES TO FIX UPS ON THE GROUND.
5. APPROXIMATE WEIGHT.  
 UPS MODULE (LEFT) 5280LBS (2400kg)  
 UPS MODULE (RIGHT) 3630LBS (1650kg)  
 BYPASS MODULE 2860LBS (1300kg)
6. APPROXIMATE WEIGHT.
7. FLOOR SHALL BE FLAT AND LEVEL TO 0.3" SURROUNDING UPS MOUNTING.



REVISIONS	DATE	DESCRIPTION
0. INITIAL RELEASE	GDJ 11/16/16	
1. RELEASED FOR CONSTRUCTION	AJK 6/22/2017	
2. NOTE 7 ADDED.	ZMZ 9/19/2017	
3. UPDATED BYPASS MODULE DIMENSIONS	ZMZ 9/25/2017	
4. UPDATED BYPASS DRAWING	ZMZ 2/2/2018	
5. DRAWING REVISED	JM 3/26/2018	
6. ADDED COVER SHEET AND SHEET	ZMZ 10/8/2018	
7. REVISED FOR BYPASS MODULE WEIGHT	M.OFFI ECN 900 11/2/2018	
8. UPDATED PER ECN 1021	Z.ZAJAC 1/15/2019	
9. ADJUSTED DIMENSIONS ACCURACY.	UPDATED PER ECN 1393 Z.ZAJAC 7/15/2019	

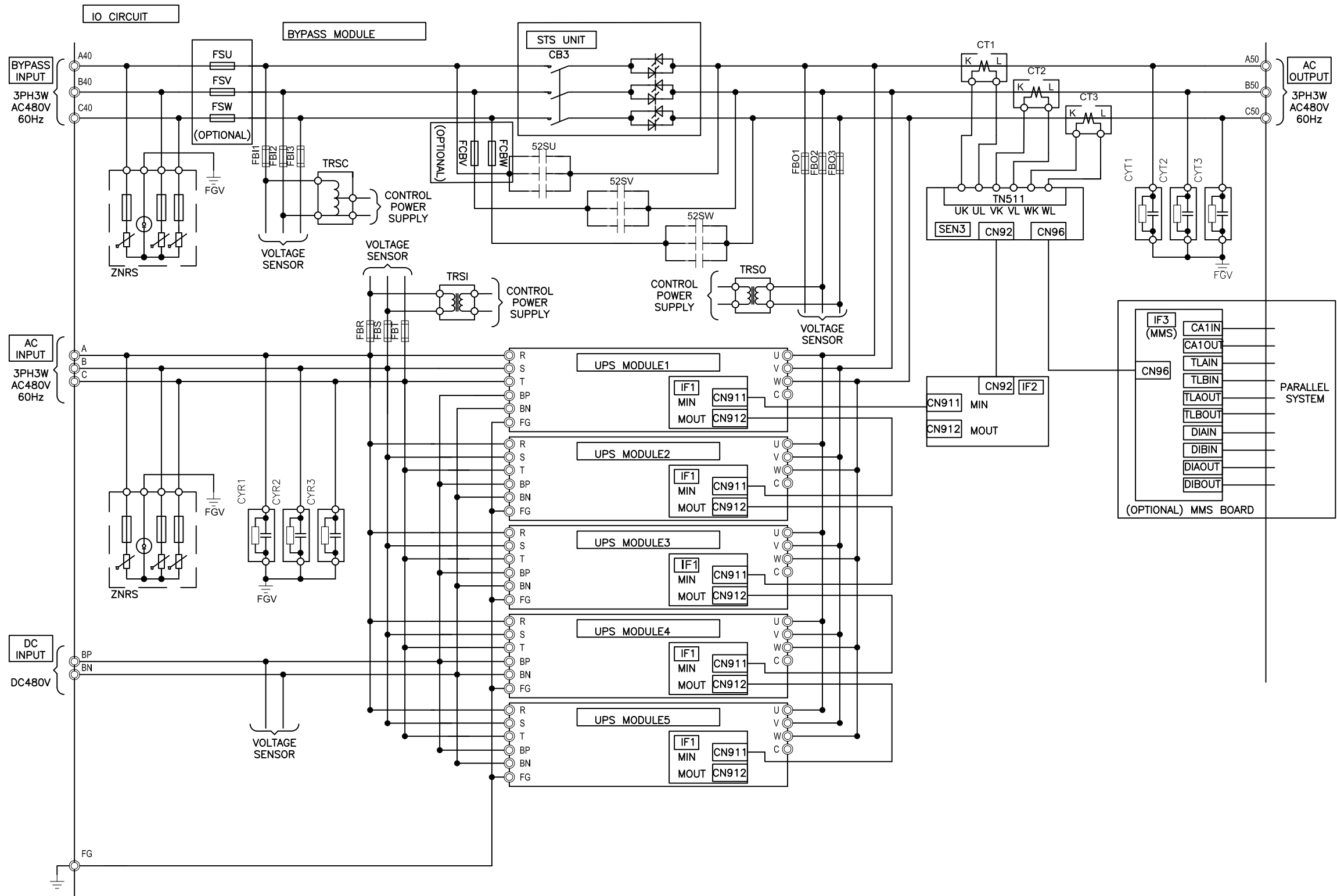
DIMENSIONS IN: IN [MM] (REF)	SCALE - NTS -	DRAFTER Z.ZAJAC	DATE 1/15/19	<p><b>MITSUBISHI ELECTRIC</b></p>
<p>PROPRIETARY</p> <p>This document is the property of Mitsubishi Electric Power Products, Inc. and contains proprietary and confidential information which must not be duplicated, used or disclosed other than as expressly authorized by Mitsubishi Electric Power Products, Inc.</p>		APPROVED N.RIEMER	DATE 1/15/19	
CORE/REFERENCE DRAWING (IF APPLICABLE)		TITLE <b>OUTLINE</b> 9900CX 1750KVA		DWG. NO. <b>UD-100573</b>
		SHEET 2 OF 6		

NOTES:  
 6. EXTERNAL WIRES OR CABLES SHALL BE PROVIDED BY CUSTOMERS FOR AC-INPUT, DC-INPUT, BYPASS-INPUT, AND AC-OUTPUT. (OUT OF PROVISION)



REVISIONS	0. INITIAL RELEASE GDJ 1/16/16
1. RELEASED FOR CONSTRUCTION AJK 6/22/2017	
2. NOTE 7 ADDED. ZMZ 9/19/2017	
3. UPDATED BYPASS MODULE DIMENSIONS ZMZ 9/25/2017	
4. UPDATED BYPASS DRAWING ZMZ 2/2/2018	
5. DRAWING REVISED JM 3/26/2018	
6. ADDED COVER SHEET AND SHEET 3 ZMZ 10/8/2018	
7. REVISED FOR BYPASS MODULE WEIGHT M.OFFI ECN 900 11/2/2018	
8. UPDATED PER ECN 1021 Z.ZAJAC 1/15/2019	
9. ADJUSTED DIMENSIONS ACCURACY. UPDATED PER ECN 1393 Z.ZAJAC 7/15/2019	

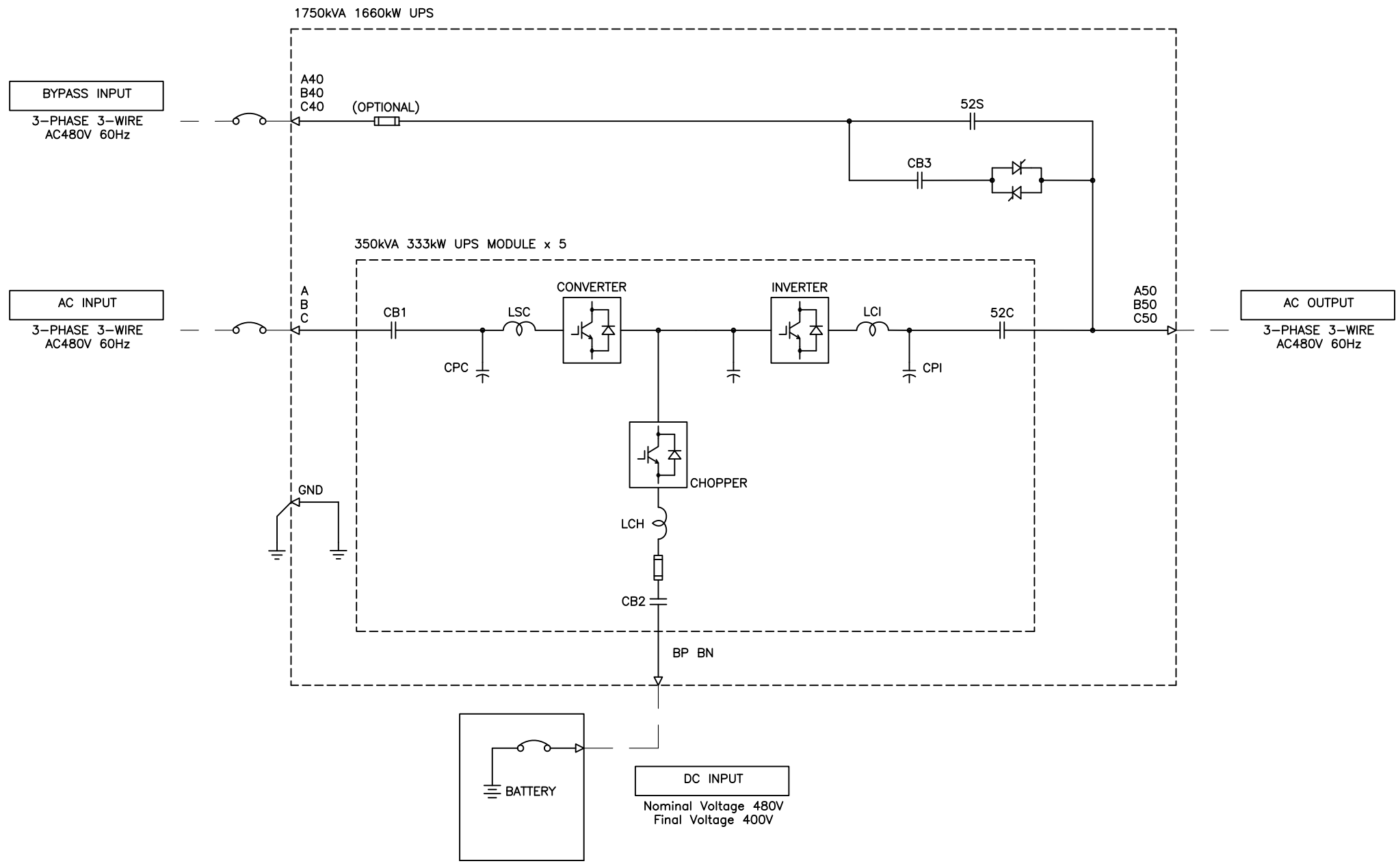
DIMENSIONS IN: IN [MM] (REF)	SCALE - NTS -	DRAFTER Z.ZAJAC	DATE 1/15/19	<p><b>MITSUBISHI ELECTRIC</b></p>
<p><b>PROPRIETARY</b>                  This document is the property of Mitsubishi Electric Power Products, Inc. and contains proprietary and confidential information which must not be duplicated, used or disclosed other than as expressly authorized by Mitsubishi Electric Power Products, Inc.</p>		APPROVED N.RIEMER	DATE 1/15/19	
CORE/REFERENCE DRAWING (IF APPLICABLE)		DWG. NO. <b>UD-100573</b>		SHEET 3 OF 6
				REV. <b>9</b>



REVISIONS	DATE	BY	DESCRIPTION
0	11/16/16	GDJ	INITIAL RELEASE
1	6/22/2017	AJK	RELEASED FOR CONSTRUCTION
2	9/19/2017	ZMZ	NOTE 7 ADDED
3	9/25/2017	ZMZ	UPDATED BYPASS MODULE DIMENSIONS
4	2/2/2018	ZMZ	UPDATED BYPASS DRAWING
5	3/26/2018	JM	DRAWING REVISED
6	10/8/2018	ZMZ	ADDED COVER SHEET AND SHEET 3
7	11/2/2018	ZMZ	REVISED FOR BYPASS MODULE WEIGHT M.OFFI
8	1/15/2019	Z.ZAJAC	UPDATED PER ECN 1021
9	7/15/2019	Z.ZAJAC	ADJUSTED DIMENSIONS FOR ACCURACY; UPDATED PER ECN 1393

DIMENSIONS IN: IN (MM)	SCALE - NTS -	DRAFTER Z.ZAJAC	DATE 1/15/19
PROPRIETARY <small>This document is the property of Mitsubishi Electric Power Products, Inc. and contains proprietary and confidential information which must not be disclosed, used or disclosed other than as expressly authorized by Mitsubishi Electric Power Products, Inc.</small>		APPROVED N. RIEMER	DATE 1/15/19
		TITLE OUTLINE 9900CX 1750KVA	
CORE [REFERENCE] DRAWING		DWG. NO.	SHEET 4 OF 6 REV.
UD-100573		9	

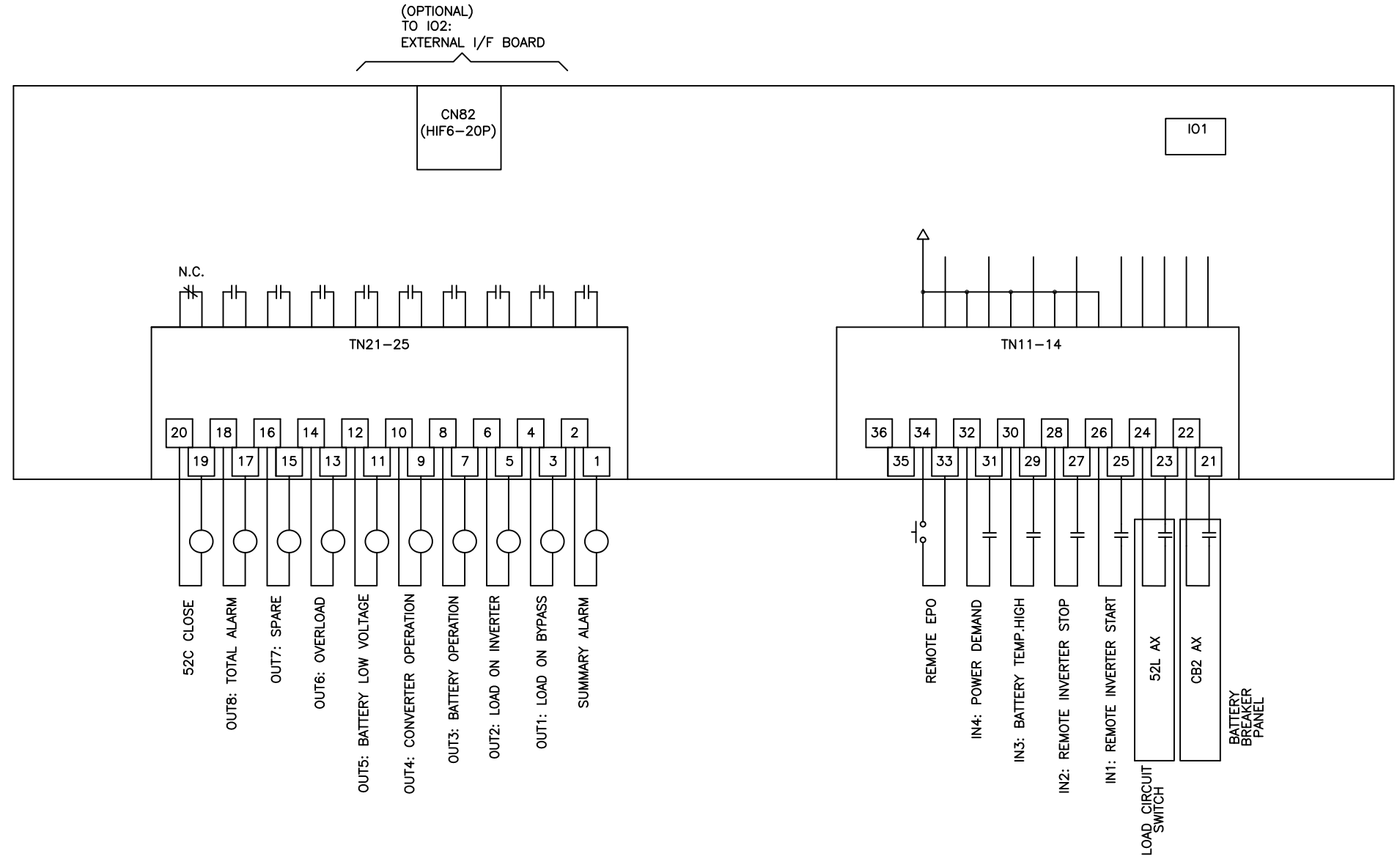




REVISIONS	DATE	BY	DESCRIPTION
0	11/16/16	GDJ	INITIAL RELEASE
1	6/22/2017	AJK	RELEASED FOR CONSTRUCTION
2	9/19/2017	ZMZ	NOTE 7 ADDED.
3	9/25/2017	ZMZ	UPDATED BYPASS MODULE DIMENSIONS
4	2/2/2018	ZMZ	UPDATED BYPASS DRAWING
5	3/26/2018	JM	DRAWING REVISED
6	10/8/2018	ZMZ	ADDED COVER SHEET AND SHEET 3
7	11/2/2018	M.OFFI	REVISED FOR BYPASS MODULE WEIGHT
8	1/15/2019	Z.ZAJAC	UPDATED PER ECN 1021
9	7/15/2019	Z.ZAJAC	ADJUSTED DIMENSIONS FOR ACCURACY; UPDATED PER ECN 1393

DIMENSIONS IN: IN [MM]	SCALE - NTS -	DRAFTER Z.ZAJAC	DATE 1/15/19
PROPRIETARY <small>This document is the property of Mitsubishi Electric Power Products, Inc. and contains proprietary and confidential information which must not be disclosed, used or disclosed other than as expressly authorized by Mitsubishi Electric Power Products, Inc.</small>		APPROVED N.RIEMER	DATE 1/15/19
		TITLE <b>OUTLINE</b> 9900CX 1750KVA	
CORE [REFERENCE] DRAWING		DWG. NO.	SHEET 5 OF 6 REV.
UD-100573		9	





REVISIONS
0 INITIAL RELEASE GDJ 11/16/16
1. RELEASED FOR CONSTRUCTION AJK 6/22/2017
2. NOTE 7 ADDED. ZMZ 9/19/2017
3. UPDATED BYPASS MODULE DIMENSIONS ZMZ 9/25/2017
4. UPDATED BYPASS DRAWING ZMZ 2/2/2018
5. DRAWING REVISED JM 3/26/2018
6. ADDED COVER SHEET AND SHEET 3 ZMZ 10/8/2018
7. REVISED FOR BYPASS MODULE WEIGHT M.OFFI ECN 900 11/2/2018
8. UPDATED PER ECN 1021 Z.ZAJAC 1/15/2019
9. ADJUSTED DIMENSIONS FOR ACCURACY; UPDATED PER ECN 1393 Z.ZAJAC 7/15/2019

DIMENSIONS IN: IN (MM)	SCALE - NTS -	DRAFTER Z.ZAJAC	DATE 1/15/19	<p><b>MITSUBISHI ELECTRIC</b></p>
<small>PROPRIETARY</small> <small>This document is the property of Mitsubishi Electric Power Products, Inc. and contains proprietary and confidential information which must not be disclosed, used or disclosed other than as expressly authorized by Mitsubishi Electric Power Products, Inc.</small>		APPROVED N. RIEMER	DATE 1/15/19	
				CORE [REFERENCE] DRAWING DWG. NO. UD-100573 SHEET 6 OF 6 REV. 9