

MITSUBISHI 9900D 1.2/1.25MVA UPS OUTLINE DRAWING

CUSTOMER -

PROJECT NUMBER -

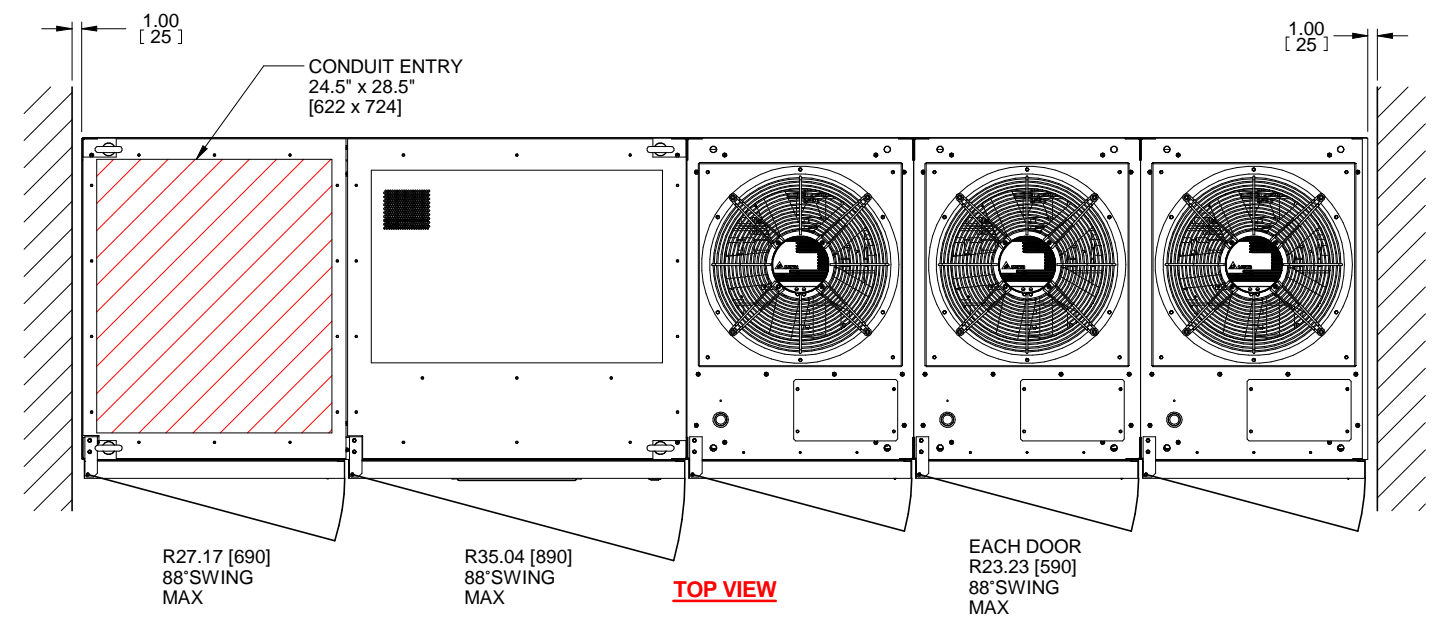
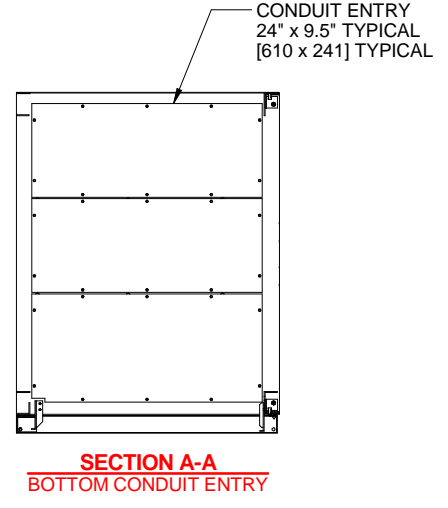
PROJECT LOCATION -

TABLE OF CONTENTS

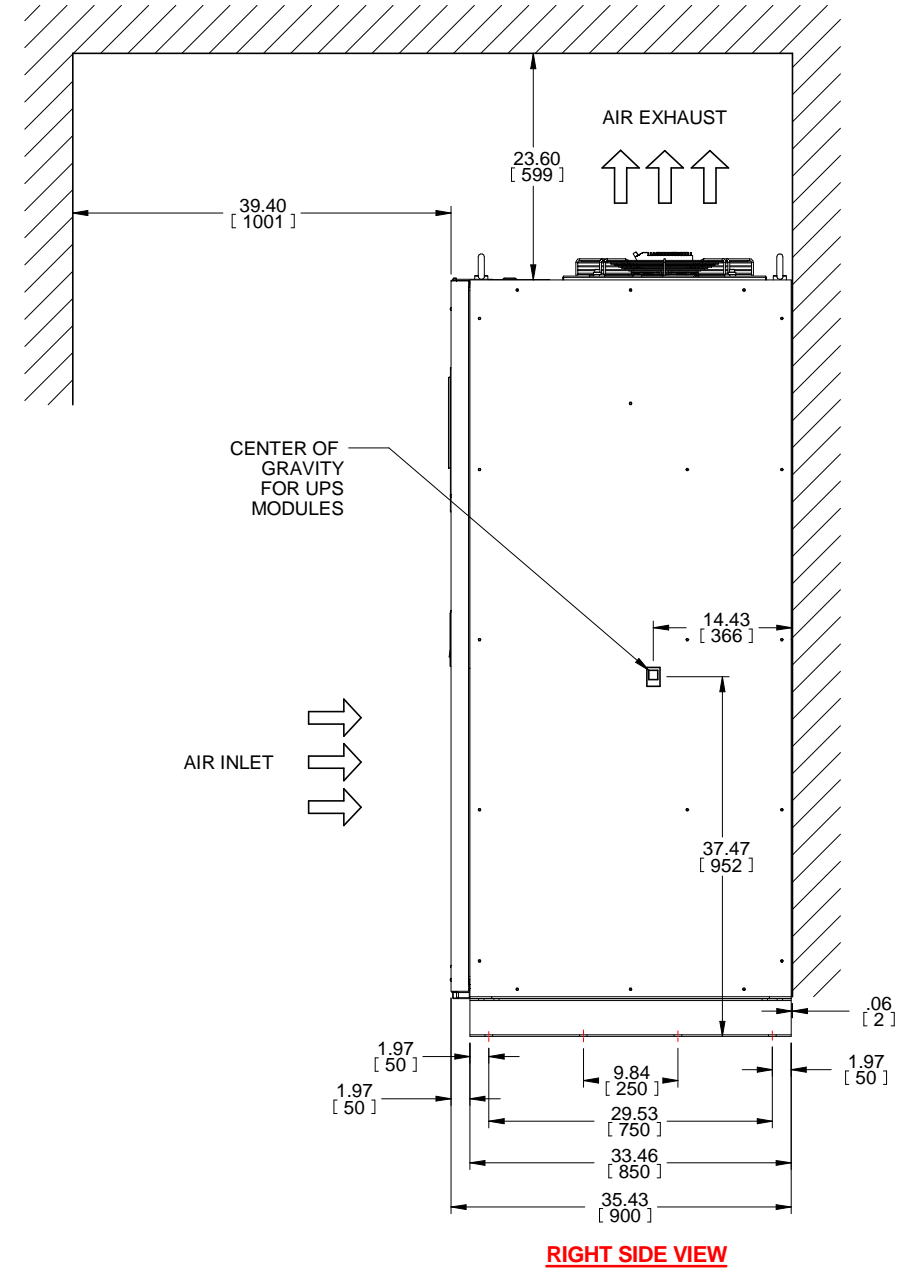
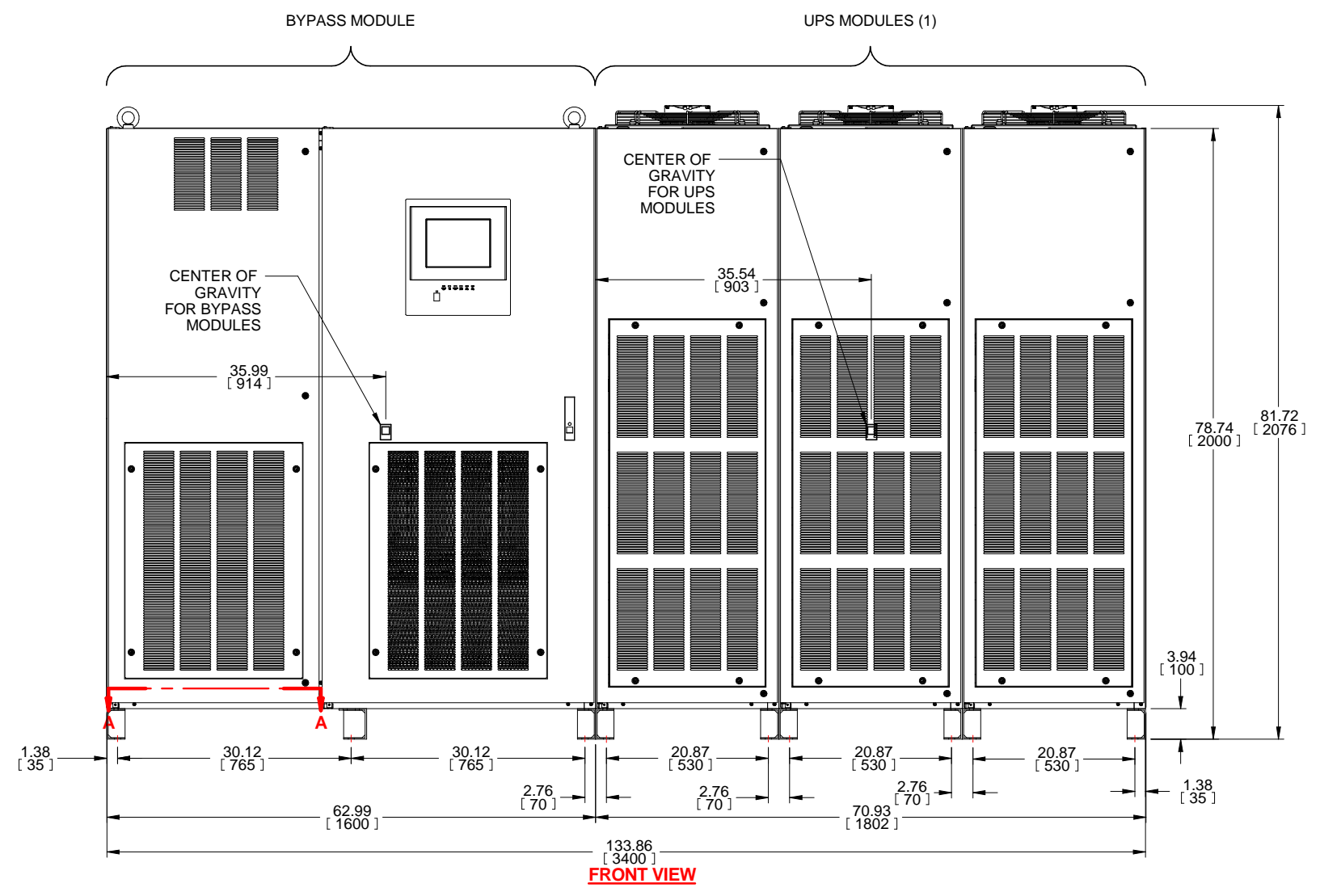
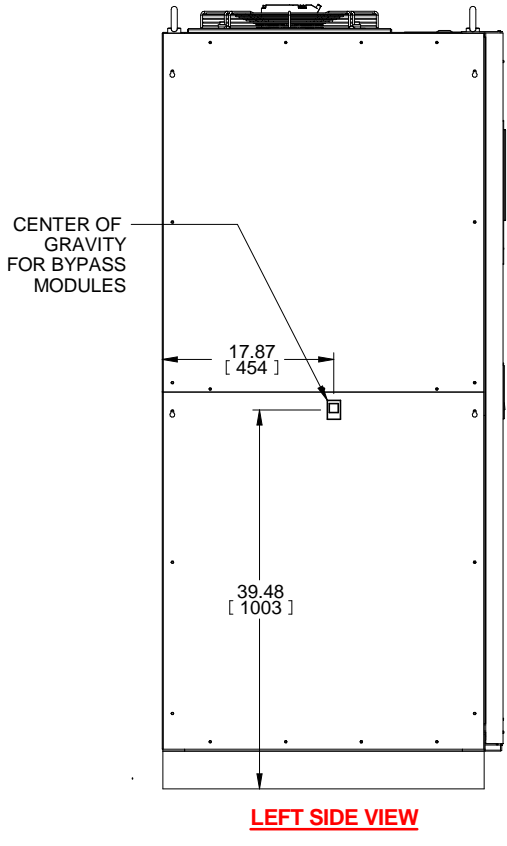
SHEET NO.	TITLE
01	COVER SHEET
02	OUTLINE
03	BUS CONNECTIONS
04	SYSTEM CONFIGURATION
05	SINGLE LINE
06	SINGLE LINE
07	
08	
09	
10	
11	
12	
13	
14	
15	

REVISIONS
0. INITIAL RELEASE Z.ZAJAC 1/25/19
2. CHANGED TITLE TO 1.2/1.25MVA Z.ZAJAC 12/12/19
3. UPDATED DIMENSIONS AND VIEWS FOR NEW DOOR J.PRY-SOCK 2/27/20
4. ADDED UVR CONNECTION TO SHEET 6. J.MOTT 7/10/2020
5. ADDED BUS HOLE DIAMETER AND THICKNESS DIMENSIONS. R.DURBIN 7/16/2021

DIMENSIONS IN: IN [MM] (REF)	SCALE - NTS -	DRAFTER Z.ZAJAC	DATE 11/25/19	MITSUBISHI ELECTRIC
PROPRIETARY <small>This document is the property of Mitsubishi Electric Power Products, Inc. and contains proprietary and confidential information which must not be duplicated, used or disclosed other than as expressly authorized by Mitsubishi Electric Power Products, Inc.</small>		APPROVED A.WINTER	DATE 11/25/19	
CORE/REFERENCE DRAWING (IF APPLICABLE)		TITLE 9900D 1.2/1.25MVA OUTLINE DRAWING		DWG. NO. UD-101108
				SHEET 1 OF 6 REV. 4

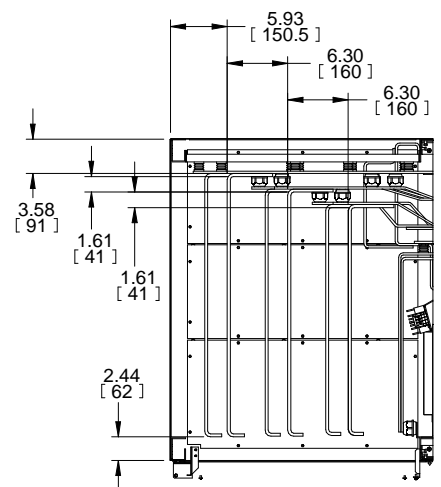


- NOTES:
1. DIMENSIONS ARE SHOWN IN INCHES" [MILLIMETERS].
 2. SIDE SPACE '1"[25] IS NOT REQUIRED WHEN SIDECARS ARE USED.
 3. CABINET SHOULD BE MAINTAINED UPRIGHT WITHIN +/- 15° DURING HANDLING.
 4. EACH BASE CHANNEL HAS 2 or 4 x 0.8"[20] DIAMETER HOLES TO FIX UPS ON THE GROUND.
 5. LIFTING EYES OPTIONAL.
 6. APPROXIMATE WEIGHT.
- UPS MODULES 5,200LBS (2,360kg)
BYPASS MODULE 2,070LBS (940kg)
7. FLOOR SHALL BE FLAT AND LEVEL TO 0.3" SURROUNDING UPS MOUNTING.

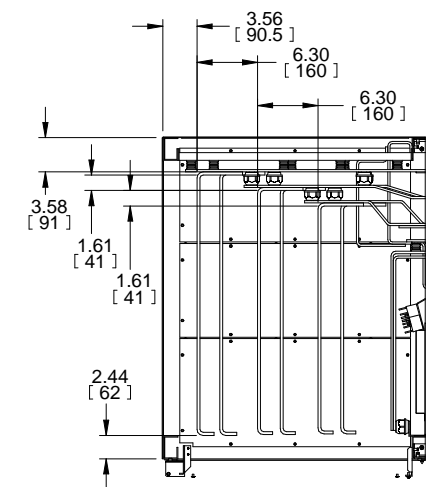


REVISIONS	DATE	DESCRIPTION
0. INITIAL RELEASE	Z.ZAJAC 11/25/19	
2. CHANGED TITLE TO 1.2/1.25MVA	Z.ZAJAC 12/12/19	
3. UPDATED DIMENSIONS AND VIEWS FOR NEW DOOR	J.PRY-SOCK 2/27/20	
4. ADDED UVR CONNECTION TO SHEET 6.	J.MOTT 7/10/2020	
5. ADDED BUS HOLE DIAMETER AND THICKNESS DIMENSIONS.	R.DURBIN 7/16/2021	

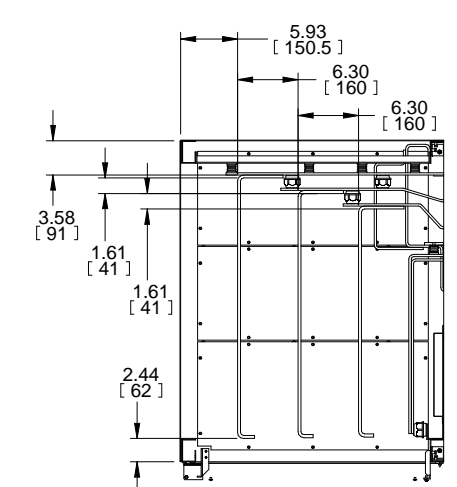
DIMENSIONS IN: IN [MM] (REF)	SCALE - NTS -	DRAFTER Z.ZAJAC	DATE 11/25/19	<p>MITSUBISHI ELECTRIC</p>
<p>PROPRIETARY</p> <p>This document is the property of Mitsubishi Electric Power Products, Inc. and contains proprietary and confidential information which must not be duplicated, used or disclosed other than as expressly authorized by Mitsubishi Electric Power Products, Inc.</p>		APPROVED A.WINTER	DATE 11/25/19	
TITLE 9900D 1.2/1.25MVA OUTLINE DRAWING		DWG. NO. UD-101108		SHEET 2 OF 6 REV. 4



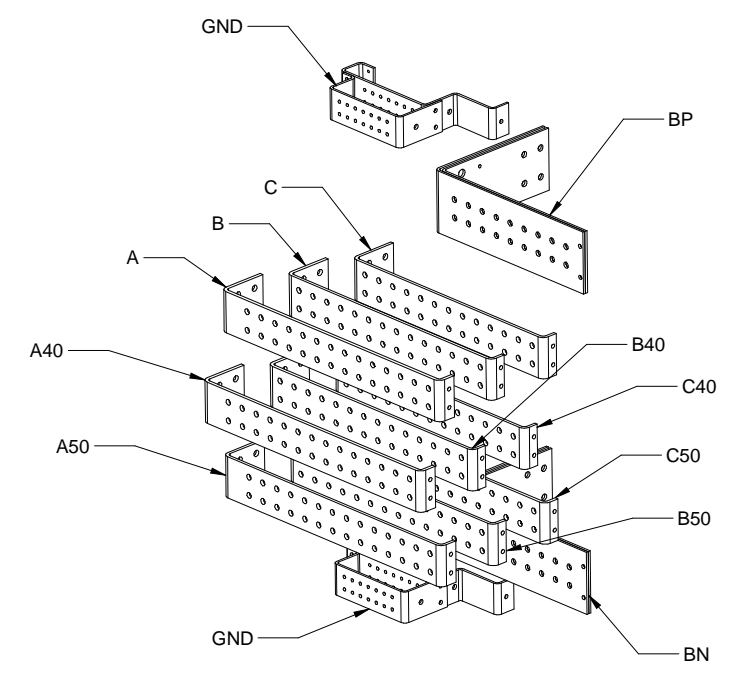
SECTION D-D



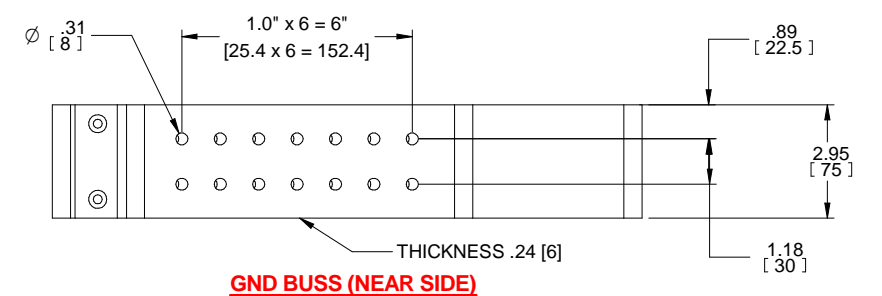
SECTION C-C



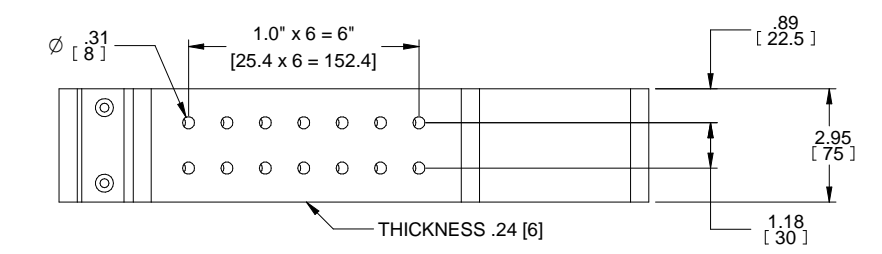
SECTION B-B



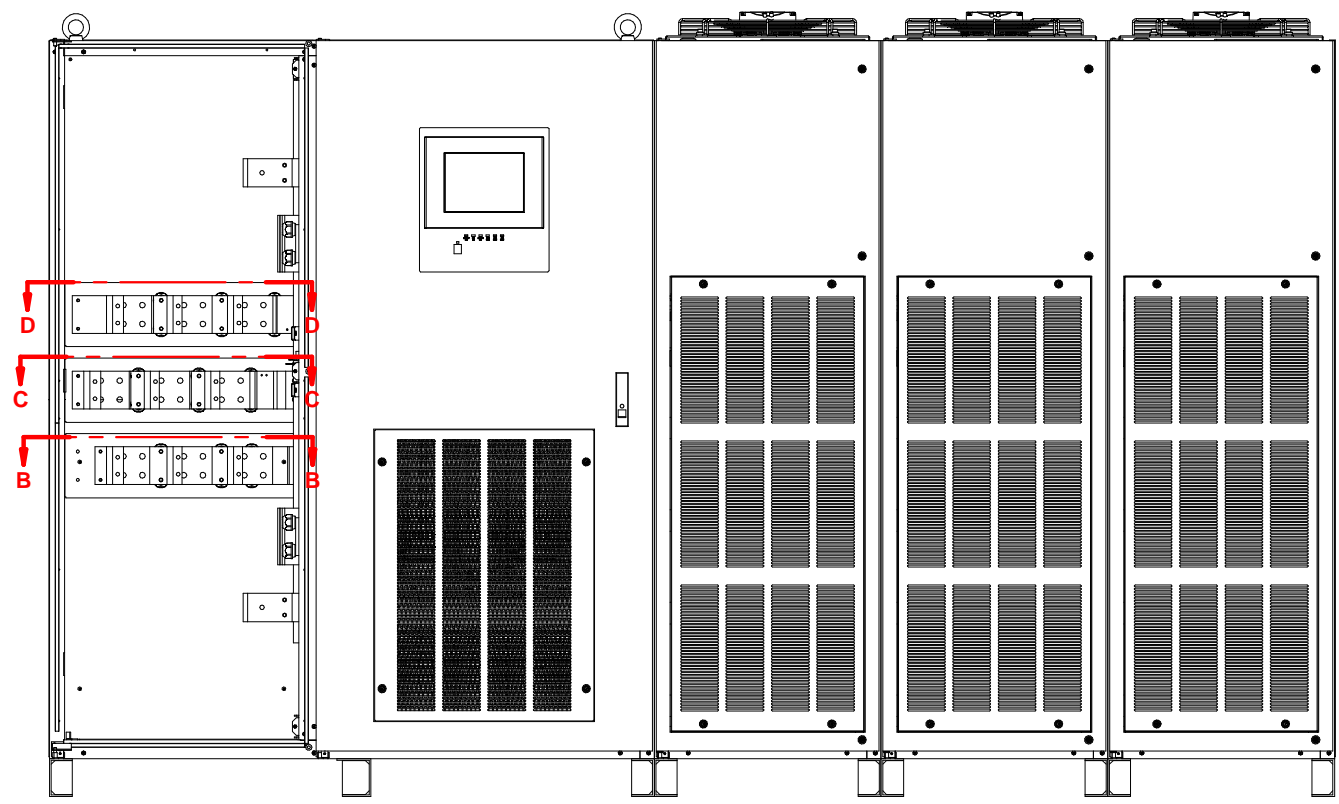
FRON-TOP-LEFT VIEW OF TERMINAL BUSS



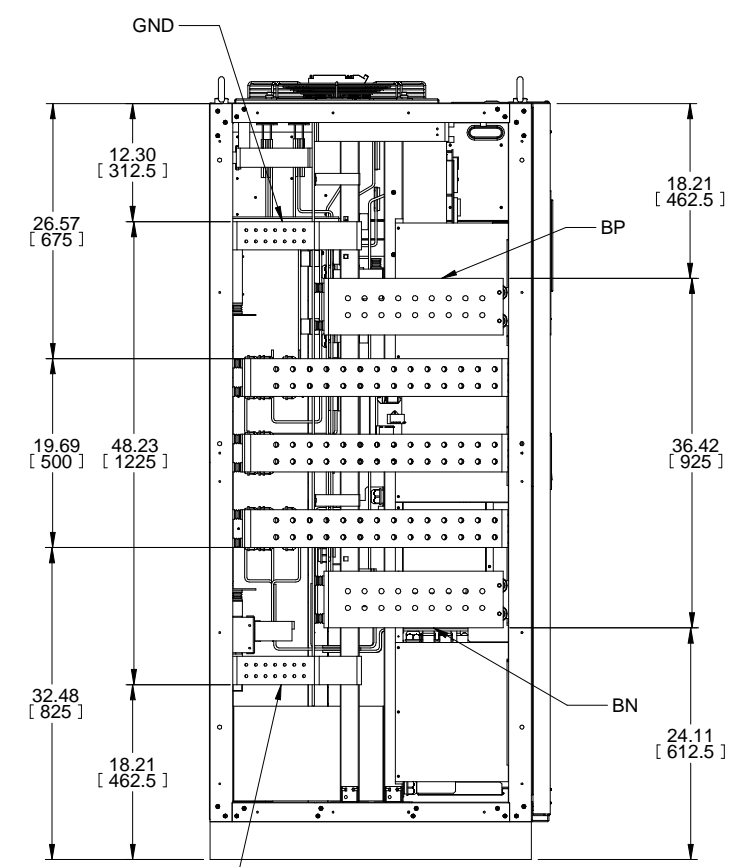
GND BUSS (NEAR SIDE)



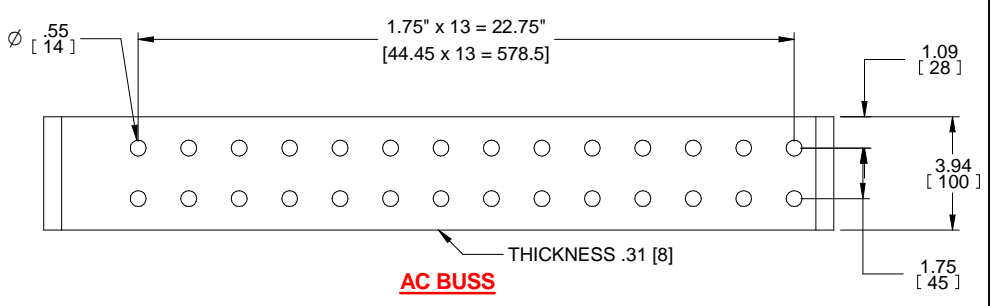
GND BUSS (INSIDE SIDE)



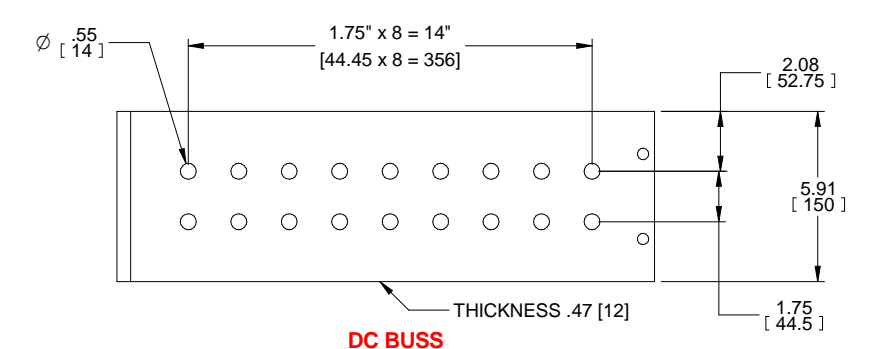
FRONT INSIDE VIEW



LEFT INSIDE VIEW



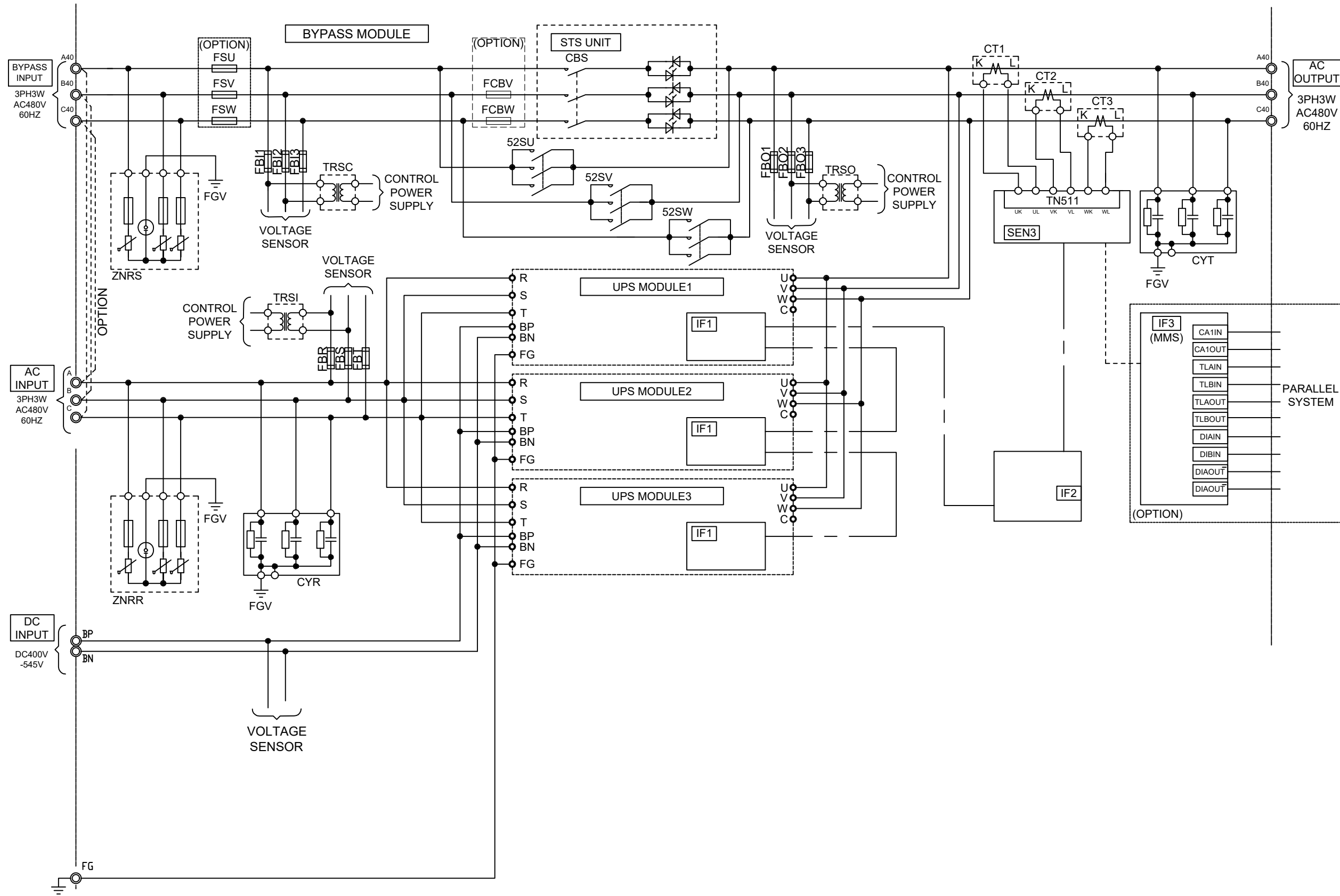
AC BUSS



DC BUSS

REVISIONS	0. INITIAL RELEASE Z.ZAJAC 11/25/19	2. CHANGED TITLE TO 1.2/1.25MVA Z.ZAJAC 12/12/19	3. UPDATED DIMENSIONS AND VIEWS FOR NEW DOOR	4. ADDED UVR CONNECTION TO SHEET 6. J.MOTT 7/10/2020	5. ADDED BUS HOLE DIAMETER AND THICKNESS DIMENSIONS. R.DURBIN 7/16/2021
-----------	--	--	---	---	---

DIMENSIONS IN: IN [MM] (REF)	SCALE - NTS -	DRAFTER Z.ZAJAC	DATE 11/25/19	
<small>PROPRIETARY</small> <small>This document is the property of Mitsubishi Electric Power Products, Inc. and contains proprietary and confidential information which must not be duplicated, used or disclosed other than as expressly authorized by Mitsubishi Electric Power Products, Inc.</small>		APPROVED A.WINTER	DATE 11/25/19	
CORE/REFERENCE DRAWING (IF APPLICABLE)		TITLE 9900D 1.2/1.25MVA OUTLINE DRAWING		DWG. NO. UD-101108 SHEET 3 OF 6 REV. 4



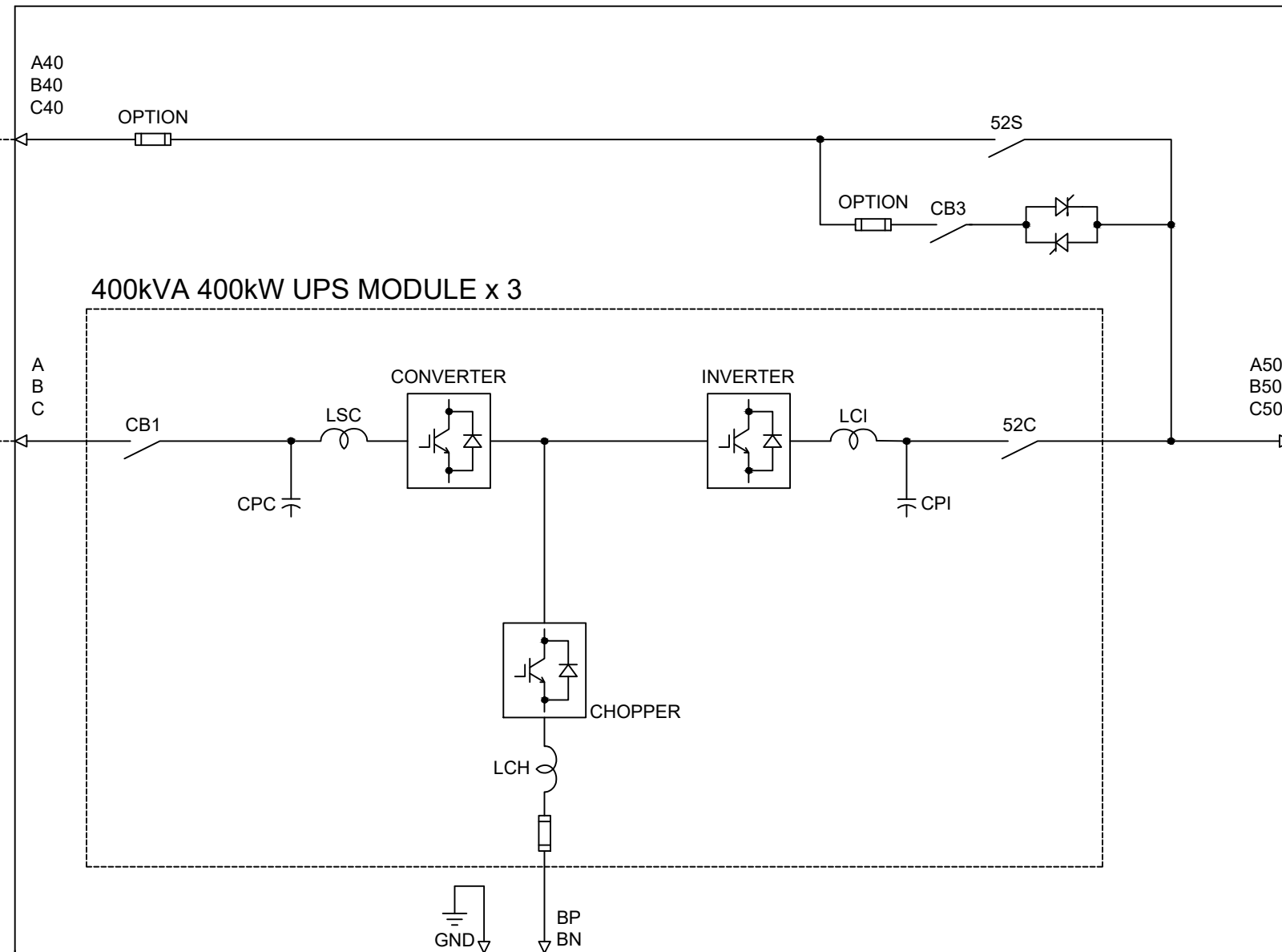
REV.	DESCRIPTION
0	INITIAL RELEASE
1	CHANGED TITLE TO 1.21.25MVA
2	CHANGED TITLE TO 1.21.25MVA
3	UPDATED DIMENSIONS AND VIEWS FOR NEW DUCKS
4	ADDED DWR CONNECTION TO SHEET 6
5	ADDED BUS METER AND DIMENSIONS

DIMENSIONS IN: IN [MM]	SCALE - NTS -	DRAFTER Z.ZAJAC	DATE 11/25/2019	<p>MITSUBISHI ELECTRIC</p>		
PROPRIETARY <small>This document is the property of Mitsubishi Electric Power Products, Inc. and contains proprietary and confidential information which must not be duplicated, used or disclosed other than as expressly authorized by Mitsubishi Electric Power Products, Inc.</small>		APPROVED A.WINTER	DATE 11/25/2019		TITLE 9900D 1200KVA OUTLINE DRAWING	
CORE [REFERENCE] DRAWING				DWG. NO.	SHEET 4 OF 6	REV. 5

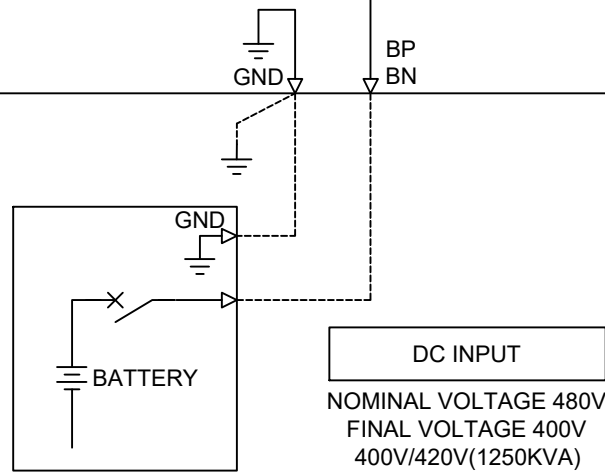
1200KVA/1250KVA UPS MODULE

BYPASS INPUT
3-PHASE 3-WIRE
AC480V 60HZ

AC INPUT
3-PHASE 3-WIRE
AC480V 60HZ



AC OUTPUT
3-PHASE 3-WIRE
AC480V 60HZ



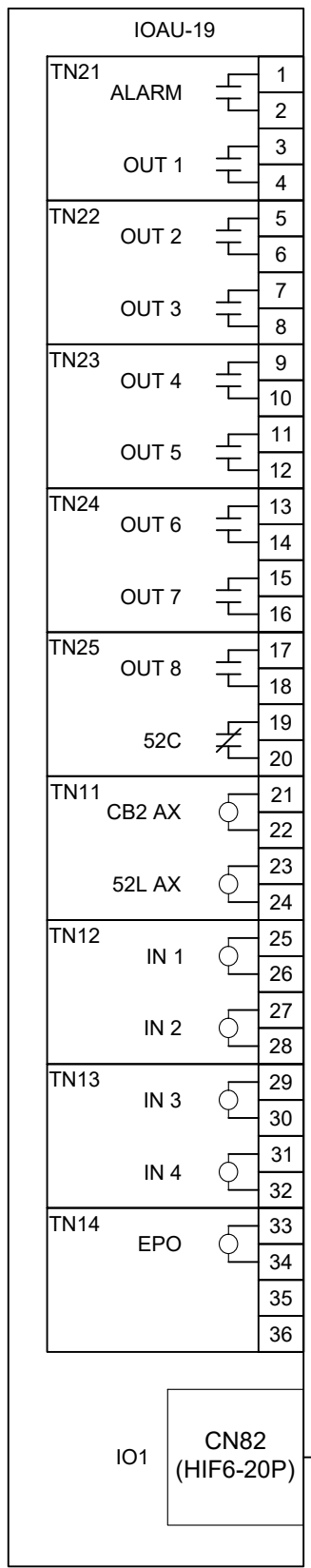
DC INPUT
NOMINAL VOLTAGE 480V
FINAL VOLTAGE 400V
400V/420V(1250KVA)

REVISIONS
0. INITIAL RELEASE Z.ZAJAC 11/25/19
1. CHANGED TITLE TO 1, 21 25MVA Z.ZAJAC 12/12/19
2. UPDATED DIMENSIONS AND VIEWS FOR NEW DIMS J.PRY-SOCK 2/27/20
3. ADDED DVR CONNECTION TO SHEET 6 J.MOTT 7/10/2020
4. ADDED BUS SOLE DIAMETER AND DIMENSIONS R.DURBIN 7/16/21

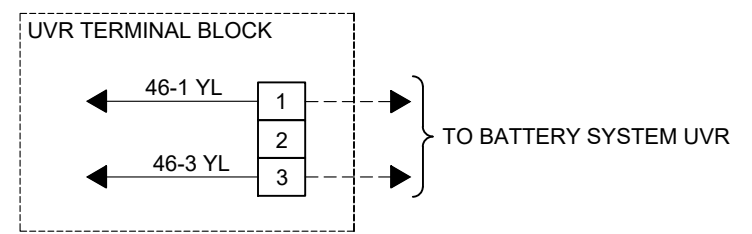
DIMENSIONS IN: IN [MM]	SCALE - NTS -	DRAFTER Z.ZAJAC	DATE 11/25/2019	<p>MITSUBISHI ELECTRIC</p>
<p>PROPRIETARY</p> <p><small>This document is the property of Mitsubishi Electric Power Products, Inc. and contains proprietary and confidential information which must not be duplicated, used or disclosed other than as expressly authorized by Mitsubishi Electric Power Products, Inc.</small></p>		APPROVED A.WINTER	DATE 11/25/2019	
CORE (REFERENCE) DRAWING				<p>TITLE 9900D 1200KVA OUTLINE DRAWING</p> <p>DWG. NO. UD-101108</p> <p>SHEET 5 OF 6</p> <p>REV. 5</p>

I/O ASSIGNMENTS	
ALARM	SUMMARY ALARM
*OUT 1	LOAD ON BYPASS
*OUT 2	LOAD ON INVERTER
*OUT 3	BATTERY OPERATION
*OUT 4	CONVERTER OPERATION
*OUT 5	BATTERY LOW VOLTAGE
*OUT 6	OVERLOAD
*OUT 7	SPARE
*OUT 8	TOTAL ALARM
52C	52C CLOSED
CB2 AX	BATTERY BREAKER PANEL
52L AX	LOAD CIRCUIT SWITCH
*IN 1	REMOTE INVERTER START
*IN 2	REMOTE INVERTER STOP
*IN 3	BATTERY TEMP. HIGH
*IN 4	POWER DEMAND
EPO	REMOTE EPO
35/36	DO NOT USE

*USER PROGRAMMABLE INPUT/OUTPUT



(OPTION)
TO IO2:
EXTERNAL I/O BOARD



REVISIONS
0. INITIAL RELEASE Z.ZAJAC 11/25/19
1. CHANGED TITLE TO 1 2/1 25/19 Z.ZAJAC 12/12/19
2. UPDATED DIMENSIONS AND CHECKS FOR NEW DUCS J.PRY-SOCK 2/27/20
3. ADDED UVR CONNECTION TO SHEET 6 J.MOTT 7/10/2020
4. ADDED BUS SOLE DIAMETER AND DIMENSIONS J.MOTT 7/10/2020
5. ADDED BUS SOLE DIAMETER AND DIMENSIONS R.DURBIN 7/18/21

DIMENSIONS IN: IN [MM]	SCALE - NTS -	DRAFTER Z.ZAJAC	DATE 11/25/2019			
<small>PROPRIETARY</small> <small>This document is the property of Mitsubishi Electric Power Products, Inc. and contains proprietary and confidential information which must not be duplicated, used or disclosed other than as expressly authorized by Mitsubishi Electric Power Products, Inc.</small>		APPROVED A.WINTER	DATE 11/25/2019		TITLE 9900D 1200KVA OUTLINE DRAWING	
CORE [REFERENCE] DRAWING				DWG. NO.	SHEET 6 OF 6	REV.
				UD-101108		5