

MITSUBISHI 9900D 1.2/1.25MVA UPS OUTLINE DRAWING

CUSTOMER -



PROJECT NUMBER -

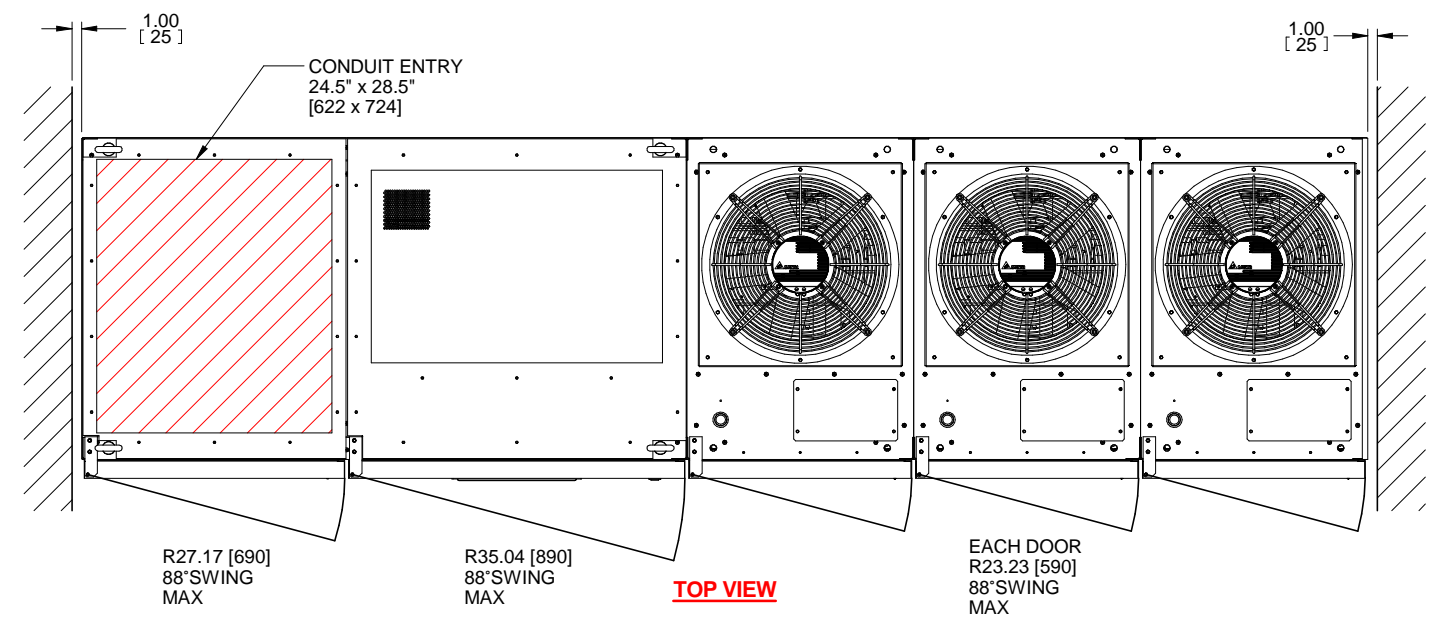
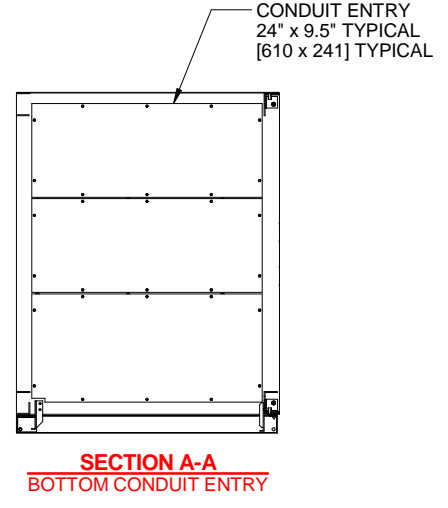
PROJECT LOCATION -

TABLE OF CONTENTS

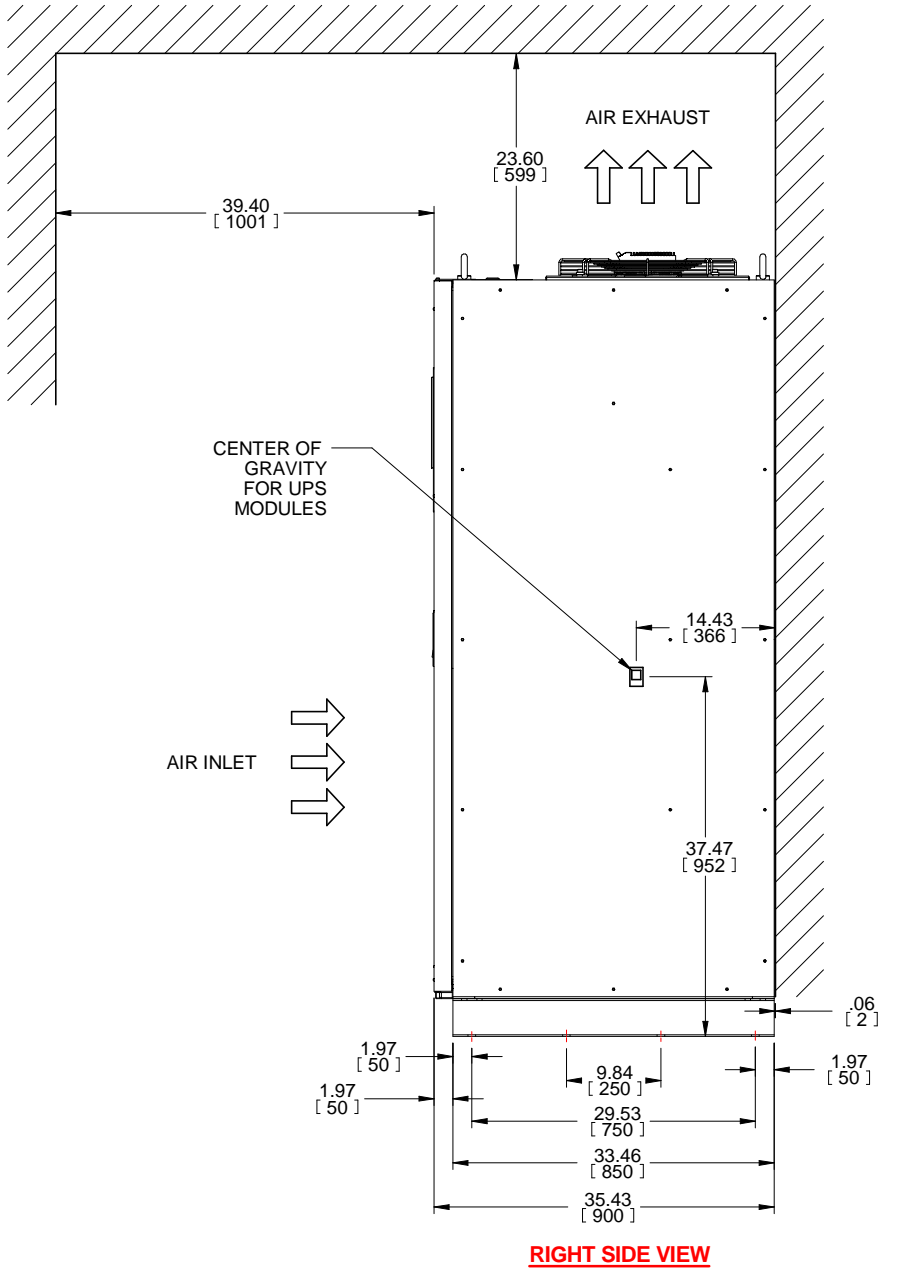
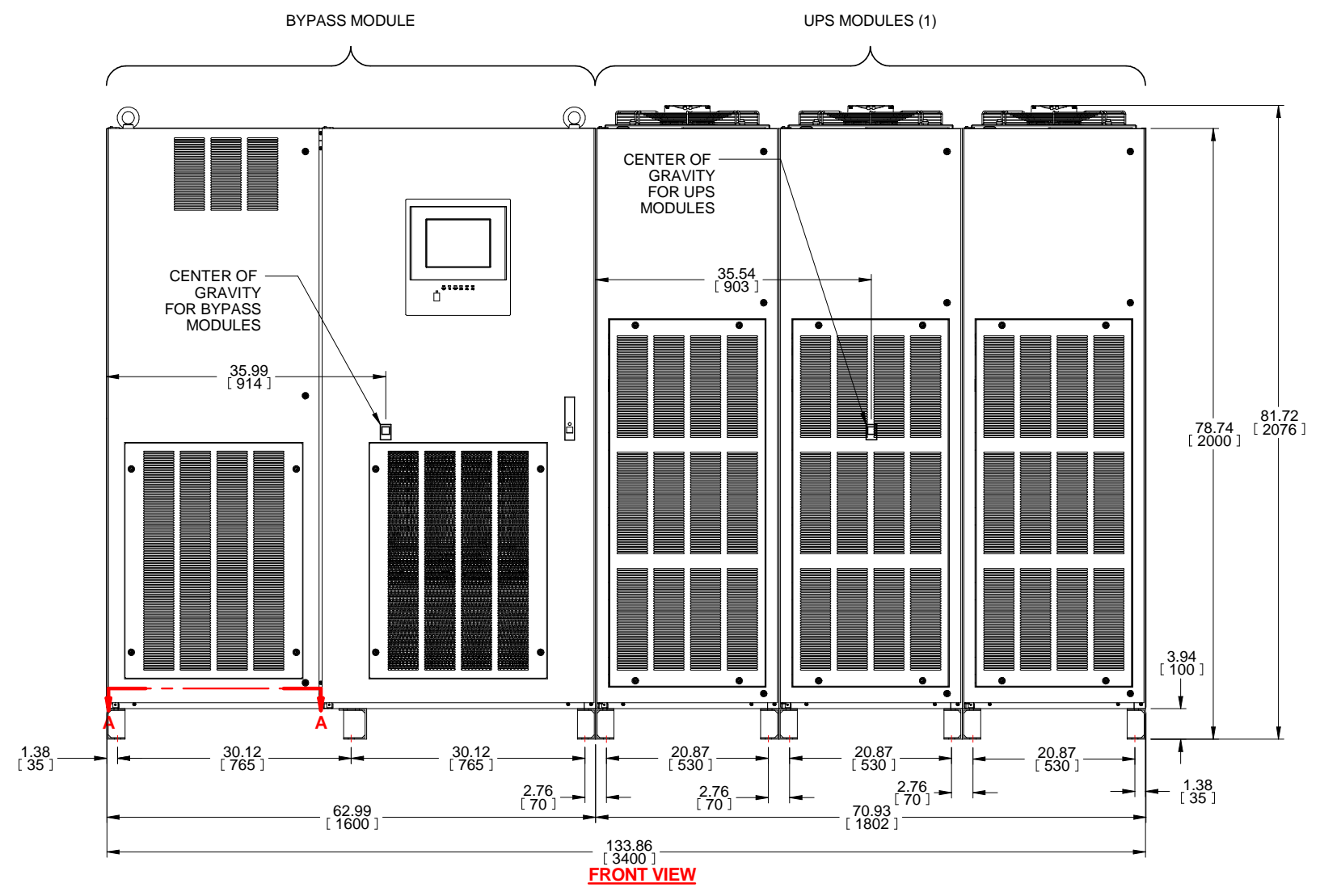
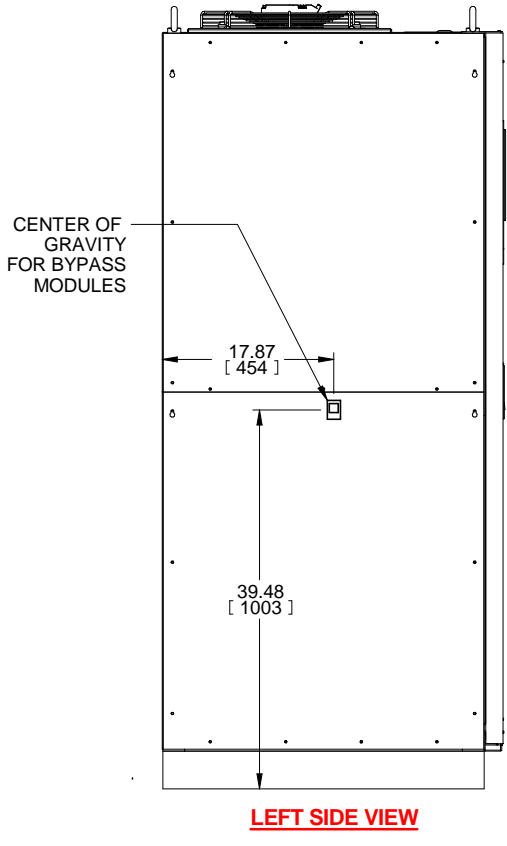
SHEET NO.	TITLE
01	COVER SHEET
02	OUTLINE
03	BUS CONNECTIONS
04	SYSTEM CONFIGURATION
05	SINGLE LINE
06	SINGLE LINE
07	
08	
09	
10	
11	
12	
13	
14	
15	

REVISIONS 0. INITIAL RELEASE Z.ZAJAC 1/25/19 2. CHANGED TITLE TO 1.2/1.25MVA Z.ZAJAC 12/12/19 3. UPDATED DIMENSIONS AND VIEWS FOR NEW DOOR J.PRY-SOCK 2/27/20

DIMENSIONS IN: IN [MM] (REF)	SCALE - NTS -	DRAFTER Z.ZAJAC	DATE 11/25/19	 MITSUBISHI ELECTRIC
PROPRIETARY <small>This document is the property of Mitsubishi Electric Power Products, Inc. and contains proprietary and confidential information which must not be duplicated, used or disclosed other than as expressly authorized by Mitsubishi Electric Power Products, Inc.</small>		APPROVED A.WINTER	DATE 11/25/19	
CORE/REFERENCE DRAWING (IF APPLICABLE)				TITLE 9900D 1.2/1.25MVA OUTLINE DRAWING
DWG. NO. UD-101108			SHEET 1 OF 6	REV. 3

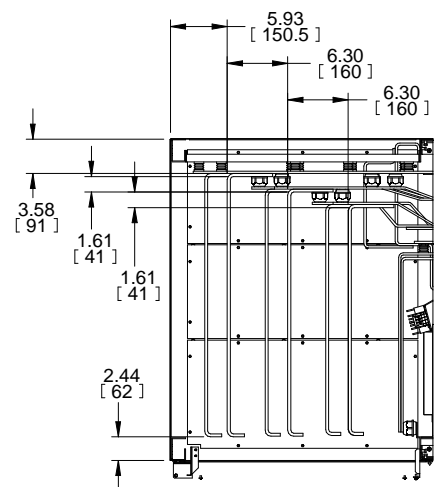


- NOTES:
1. DIMENSIONS ARE SHOWN IN INCHES" [MILLIMETERS].
 2. SIDE SPACE '1"[25] IS NOT REQUIRED WHEN SIDECARS ARE USED.
 3. CABINET SHOULD BE MAINTAINED UPRIGHT WITHIN +/- 15° DURING HANDLING.
 4. EACH BASE CHANNEL HAS 2 or 4 x 0.8"[20] DIAMETER HOLES TO FIX UPS ON THE GROUND.
 5. LIFTING EYES OPTIONAL.
 6. APPROXIMATE WEIGHT.
- UPS MODULES 5,200LBS (2,360kg)
BYPASS MODULE 2,070LBS (940kg)
7. FLOOR SHALL BE FLAT AND LEVEL TO 0.3" SURROUNDING UPS MOUNTING.

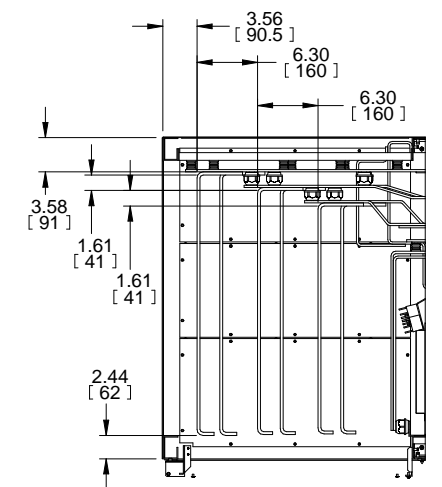


REVISIONS	DATE	DESCRIPTION
0. INITIAL RELEASE	Z.ZAJAC 11/25/19	
2. CHANGED TITLE TO 1.2/1.25MVA	Z.ZAJAC 12/12/19	
3. UPDATED DIMENSIONS AND VIEWS FOR NEW DOOR	J.PRY-SOCK 2/27/20	

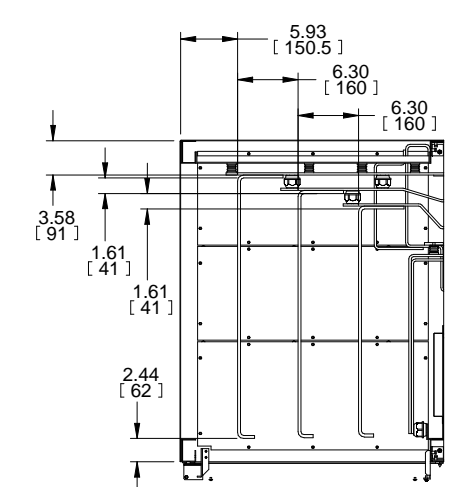
DIMENSIONS IN: IN [MM] (REF)	SCALE - NTS -	DRAFTER Z.ZAJAC	DATE 11/25/19	
<small>PROPRIETARY</small> This document is the property of Mitsubishi Electric Power Products, Inc. and contains proprietary and confidential information which must not be duplicated, used or disclosed other than as expressly authorized by Mitsubishi Electric Power Products, Inc.		APPROVED A.WINTER	DATE 11/25/19	
CORE/REFERENCE DRAWING (IF APPLICABLE)		TITLE 9900D 1.2/1.25MVA OUTLINE DRAWING		SHEET 2 OF 6 REV. 3
		DWG. NO. UD-101108		



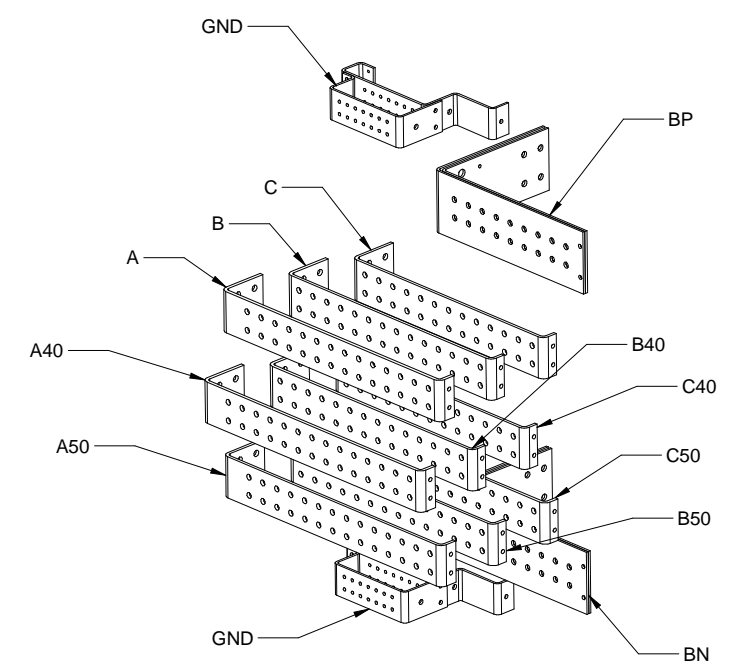
SECTION D-D



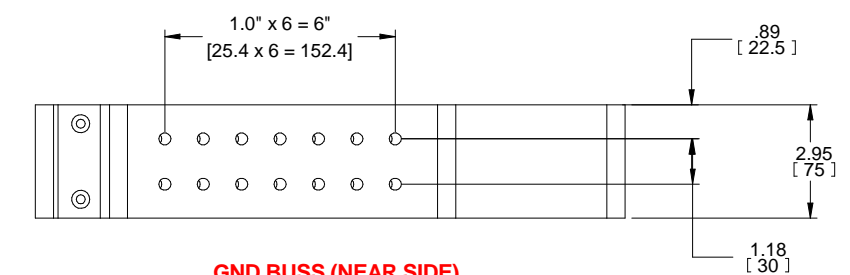
SECTION C-C



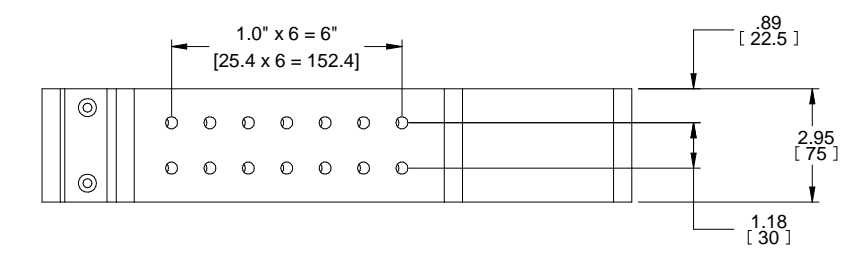
SECTION B-B



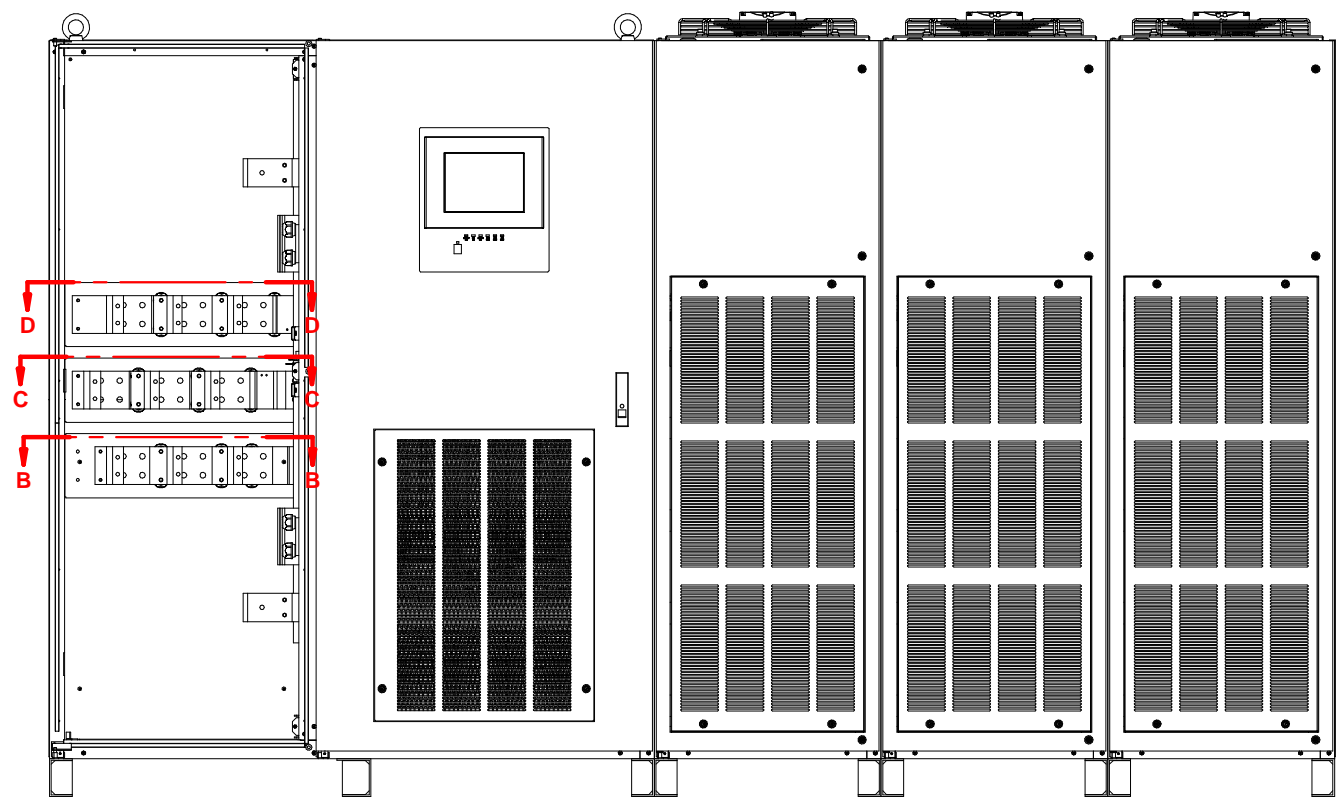
FRON-TOP-LEFT VIEW OF TERMINAL BUSS



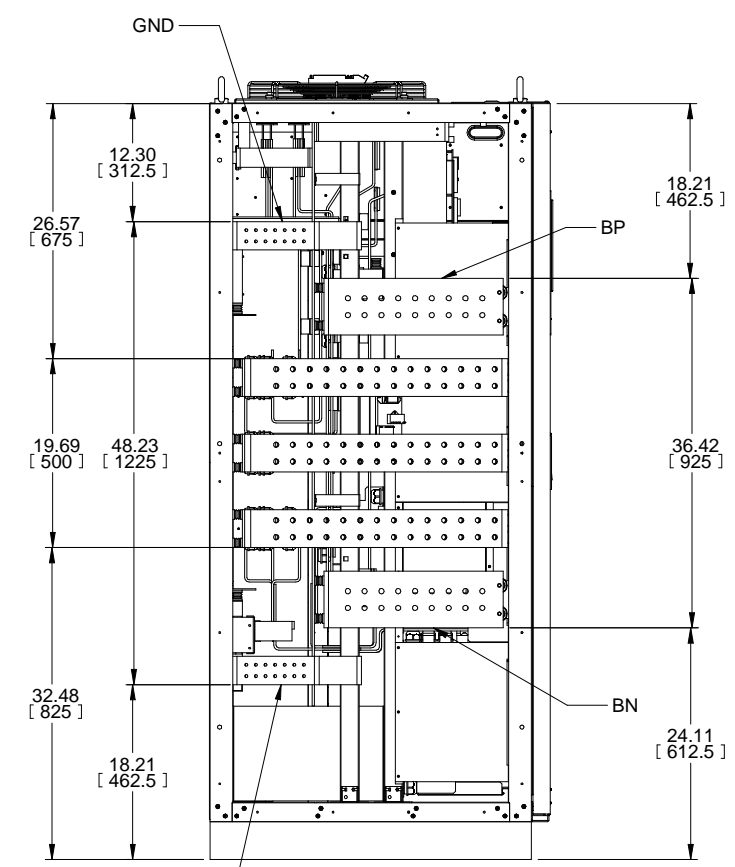
GND BUSS (NEAR SIDE)



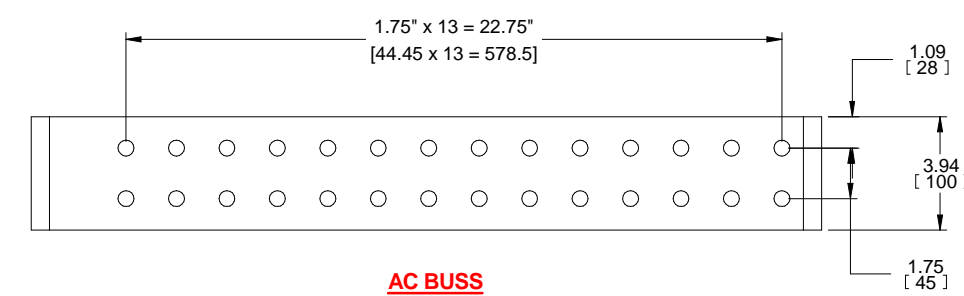
GND BUSS (INSIDE SIDE)



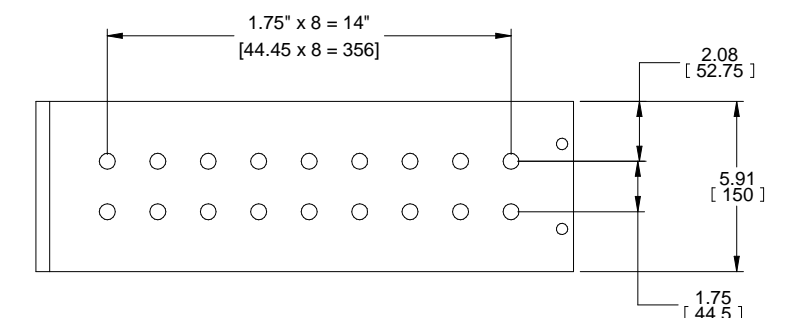
FRONT INSIDE VIEW



LEFT INSIDE VIEW



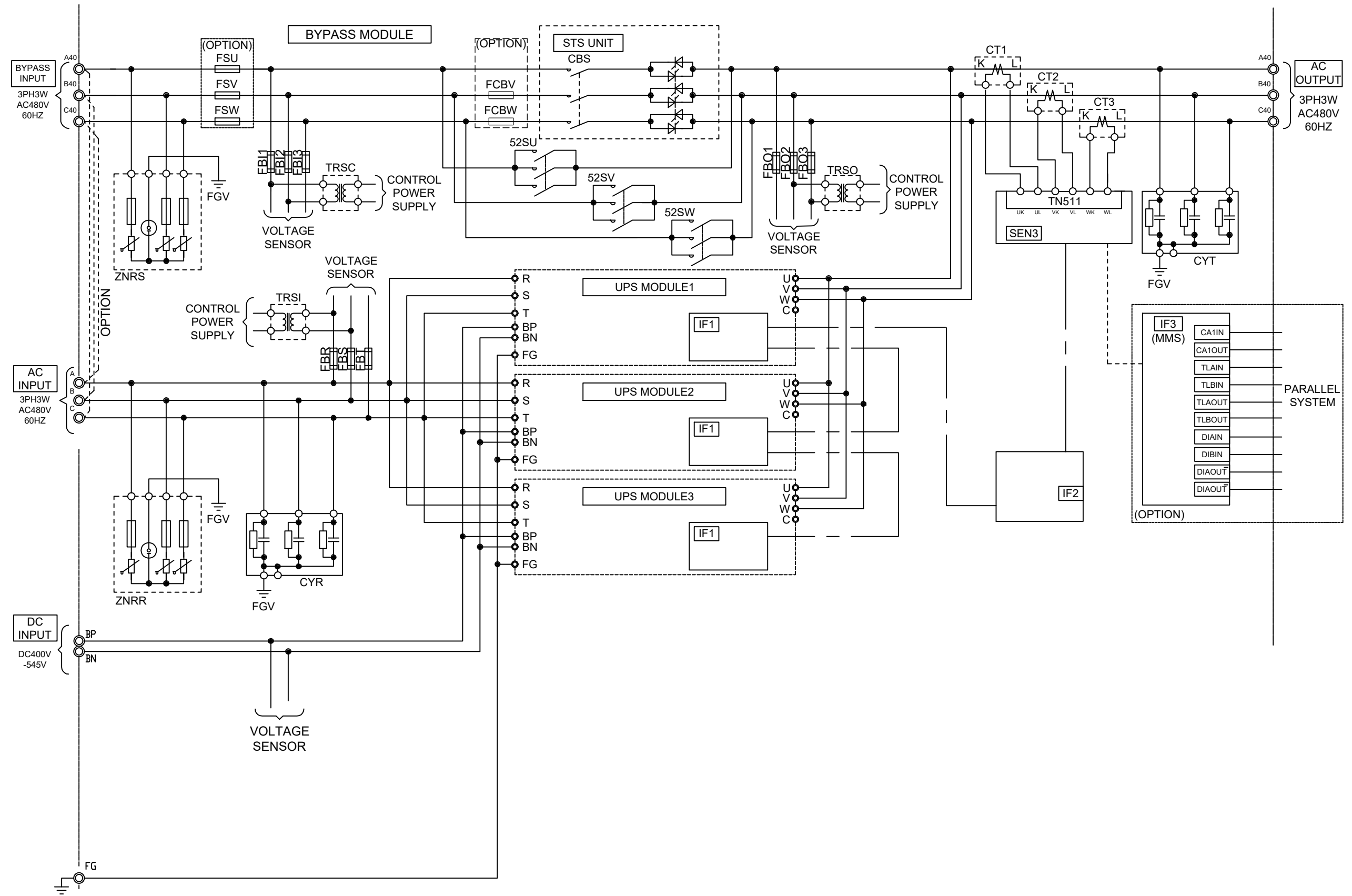
AC BUSS



DC BUSS

REVISIONS	0. INITIAL RELEASE Z.ZAJAC 11/25/19	2. CHANGED TITLE TO 1.2/1.25MVA Z.ZAJAC 12/12/19	3. UPDATED DIMENSIONS AND VIEWS FOR NEW DOOR J.PRY-SOCK 2/27/20
-----------	--	--	---

DIMENSIONS IN: IN [MM] (REF)	SCALE - NTS -	DRAFTER Z.ZAJAC	DATE 11/25/19	MITSUBISHI ELECTRIC
<small>PROPRIETARY</small> <small>This document is the property of Mitsubishi Electric Power Products, Inc. and contains proprietary and confidential information which must not be duplicated, used or disclosed other than as expressly authorized by Mitsubishi Electric Power Products, Inc.</small>		APPROVED A.WINTER	DATE 11/25/19	
<small>CORE/REFERENCE DRAWING (IF APPLICABLE)</small>		<small>TITLE</small> 9900D 1.2/1.25MVA OUTLINE DRAWING 		<small>SHEET 3 OF 6</small> UD-101108
				<small>REV.</small> 3



REVISIONS

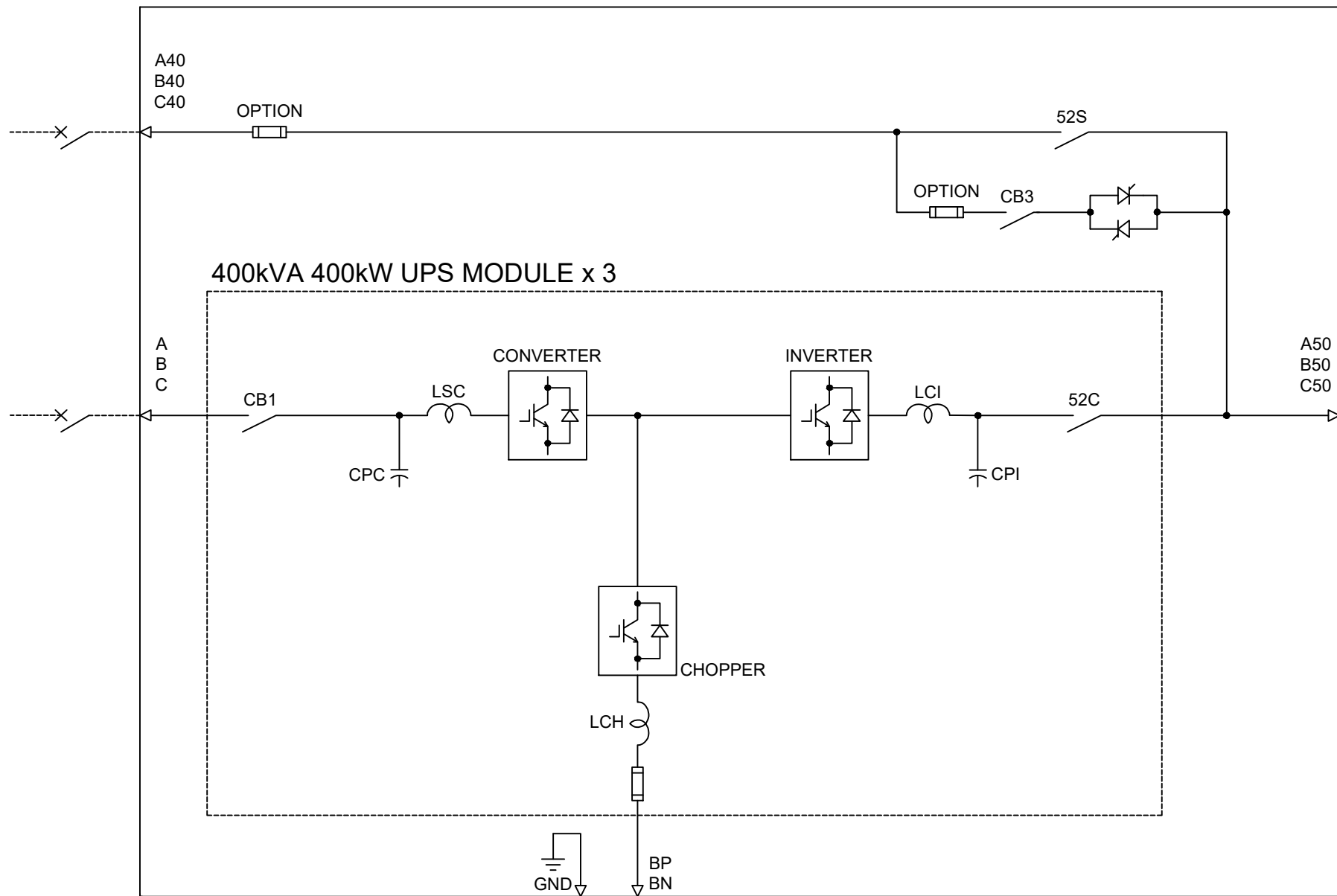
0. INITIAL RELEASE Z.ZAJAC 11/25/19
2. CHANGED TITLE TO 1.2/1.25MVA Z.ZAJAC 12/12/19
3. UPDATED DIMENSIONS AND VIEWS FOR NEW DOOR J.PRY-SOCK 2/27/20

DIMENSIONS IN: IN [MM]	SCALE - NTS -	DRAFTER Z.ZAJAC	DATE 11/25/2019	<p>MITSUBISHI ELECTRIC</p>
<small>PROPRIETARY This document is the property of Mitsubishi Electric Power Products, Inc. and contains proprietary and confidential information which must not be duplicated, used or disclosed other than as expressly authorized by Mitsubishi Electric Power Products, Inc.</small>		APPROVED A.WINTER	DATE 11/25/2019	
CORE [REFERENCE] DRAWING				<p>9900D 1200KVA OUTLINE DRAWING</p> <p>DWG. NO. SHEET 4 OF 6 REV.</p> <p>UD-101108 3</p>

1200KVA/1250KVA UPS MODULE

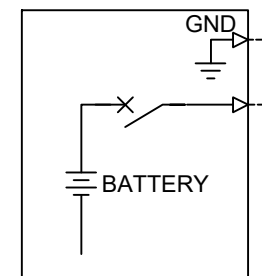
BYPASS INPUT
3-PHASE 3-WIRE
AC480V 60HZ

AC INPUT
3-PHASE 3-WIRE
AC480V 60HZ



400kVA 400kW UPS MODULE x 3

AC OUTPUT
3-PHASE 3-WIRE
AC480V 60HZ



DC INPUT
NOMINAL VOLTAGE 480V
FINAL VOLTAGE 400V
400V/420V(1250KVA)

REVISIONS

0. INITIAL RELEASE Z.ZAJAC 11/25/19
2. CHANGED TITLE TO 1.2/1.25MVA Z.ZAJAC 12/12/19
3. UPDATED DIMENSIONS AND VIEWS FOR NEW DOOR J.PRY-SOCK 2/27/20

DIMENSIONS IN: IN [MM]	SCALE - NTS -	DRAFTER Z.ZAJAC	DATE 11/25/2019	<p>MITSUBISHI ELECTRIC</p>
<small>PROPRIETARY</small> <small>This document is the property of Mitsubishi Electric Power Products, Inc. and contains proprietary and confidential information which must not be duplicated, used or disclosed other than as expressly authorized by Mitsubishi Electric Power Products, Inc.</small>		APPROVED A.WINTER	DATE 11/25/2019	
CORE [REFERENCE] DRAWING				<p>9900D 1200KVA OUTLINE DRAWING</p> <p>DWG. NO. UD-101108 SHEET 5 OF 6 REV. 3</p>

