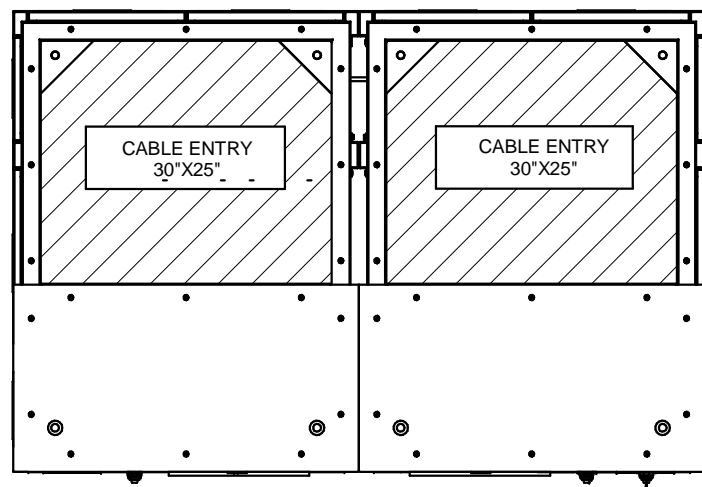
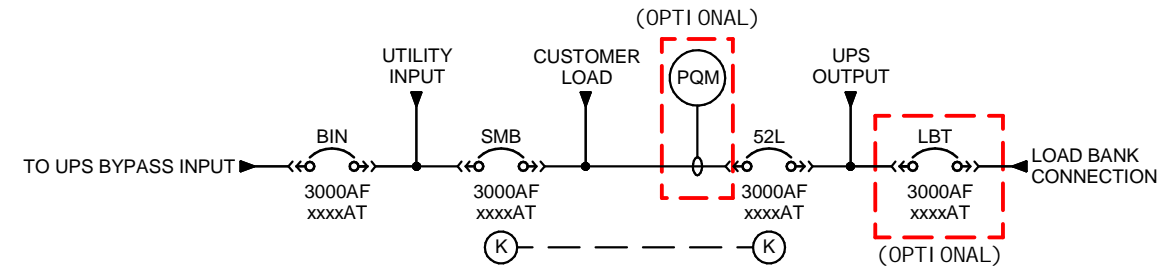


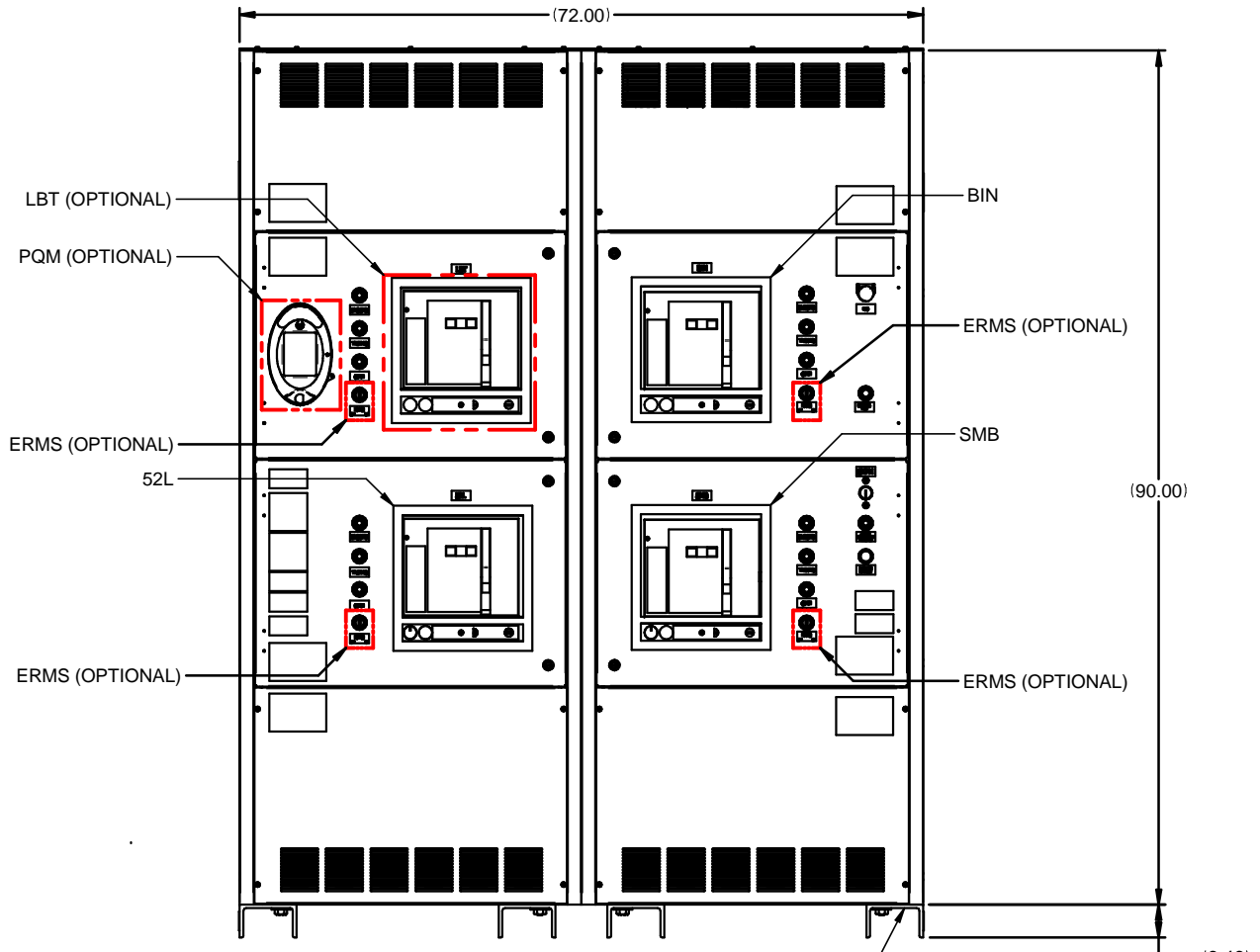
SINGLE LINE DIAGRAM



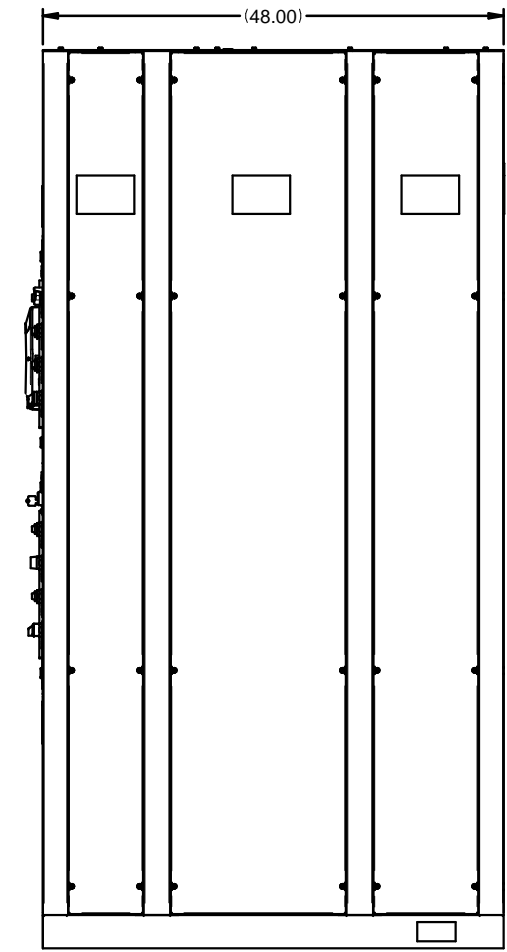
PART NUMBER: UD-100658-AK1600DE100

COLOR OF UNIT	A-BEIGE B-BLACK	TABLE CODE	BLANK- NO OPTIONS
VOLTAGE OF UNIT	K - 480V	A01- WITH LBT	
AMPERAGE OF UNIT	1600 2000 2500 3000	A02- WITH PQM	
		A03- WITH PQM & LBT	
		A04- WITH ERMS	
		A05- WITH LBT & ERMS	
		A06- WITH PQM & ERMS	
		A07- WITH PQM, LBT, & ERMS	
		KAIC OF UNIT	100
		INTERLOCK	E- SKPM
		BREAKER MANUFACTURER	D - SQAURE D

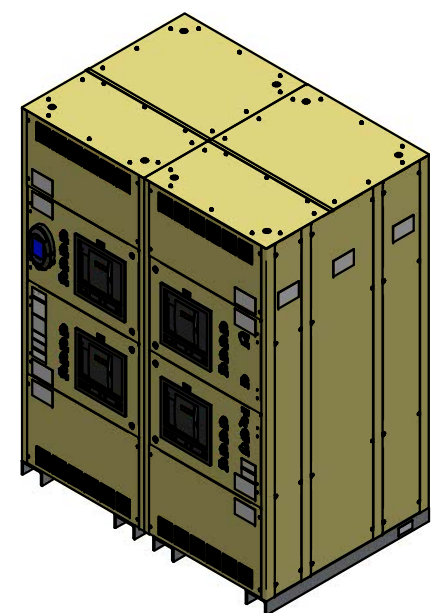
TOP
TYPICAL CONDUIT ENTRY, TOP AND BOTTOM



FRONT
BYPASS SHOWN WITH ALL OPTIONS INSTALLED



RIGHT SIDE



FRONT ISO VIEW

- NOTES:
1. BYPASS WEIGHT: 3500 LBS.
 2. CUSTOMER CONNECTIONS: (6) NEMA 2 HOLE PROVISIONS PER PHASE
 3. UNIT IS CUL, UL LISTED

REVISIONS	0. RELEASED FOR CONSTRUCTION I. MARTORELL 11/7/2017
	1. UPDATED SINGLE LINE AND NOTES Z. ZAJAC 8/1/2018
	2. UPDATED PER ECN 891 Z. ZAJAC 10/29/2018
	3. UPDATED PER ECN 941 Z. ZAJAC 11/19/2018
	4. UPDATED PER ECN 1029 Z. ZAJAC 1/22/2019
5. UPDATED PART NUMBER SCHEME J. PRY-SOCK 2/21/2020	

DIMENSIONS IN: IN [MM] (REF)	SCALE - NTS -	DRAFTER I. MARTORELL	DATE 08/08/17	<p>MITSUBISHI ELECTRIC</p>
<p>PROPRIETARY</p> <p>This document is the property of Mitsubishi Electric Power Products, Inc. and contains proprietary and confidential information which must not be duplicated, used or disclosed other than as expressly authorized by Mitsubishi Electric Power Products, Inc.</p>		APPROVED N. RIEMER	DATE 08/09/17	
CORE/REFERENCE DRAWING (IF APPLICABLE)		TITLE SALES DRAWING MAINTENANCE BYPASS;1600-3000A		<p>DWG. NO. UD-100658</p> <p>SHEET 1 OF 1</p> <p>REV. 5</p>