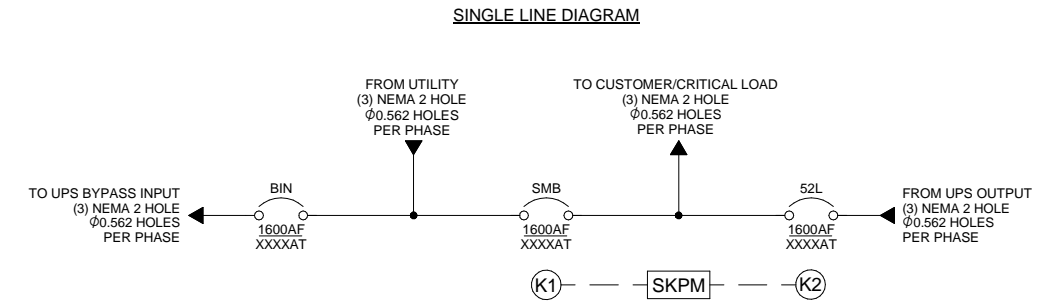
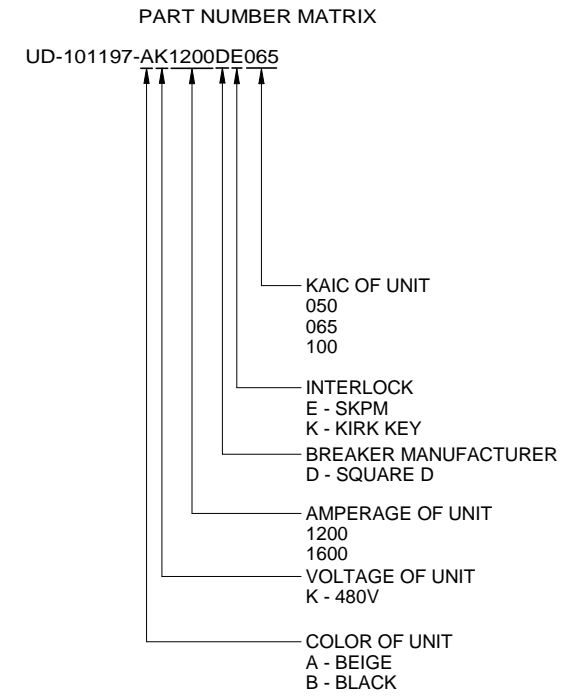
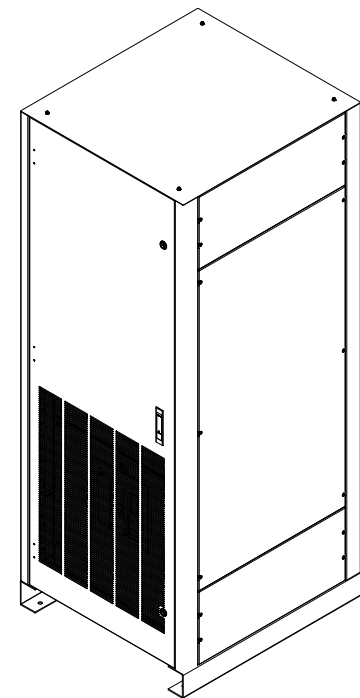
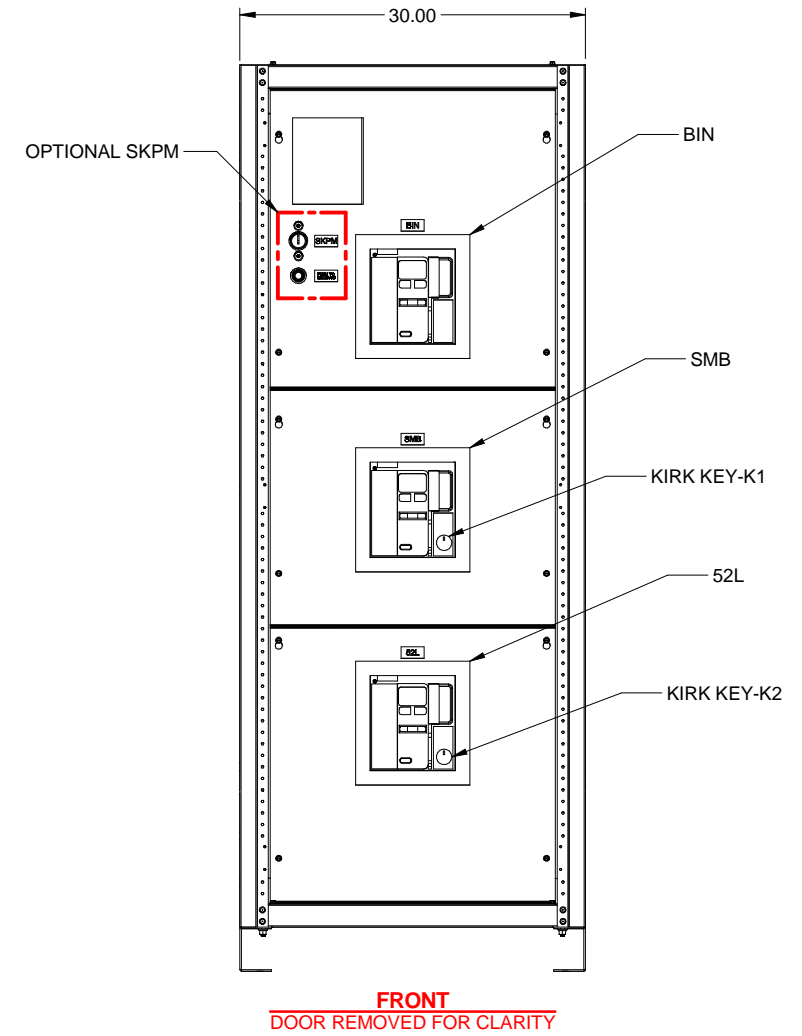
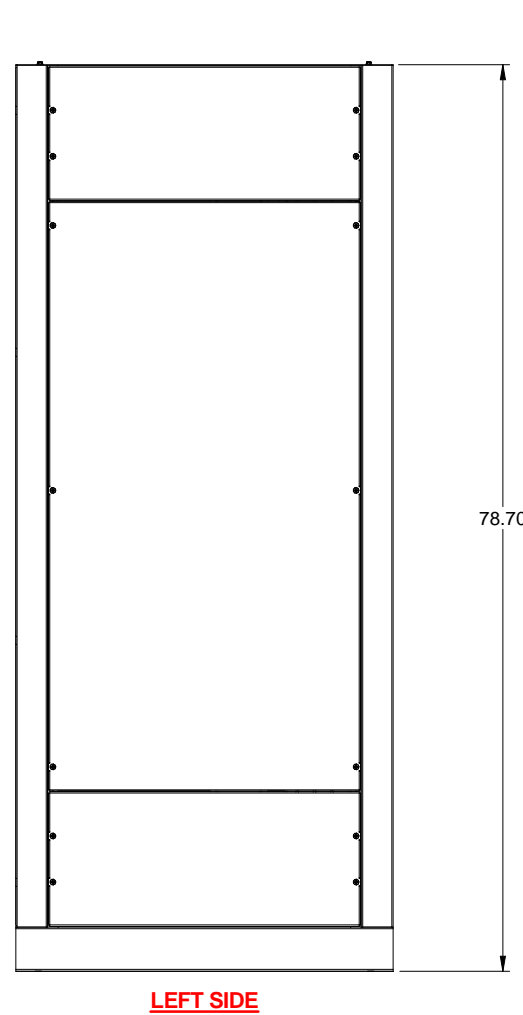
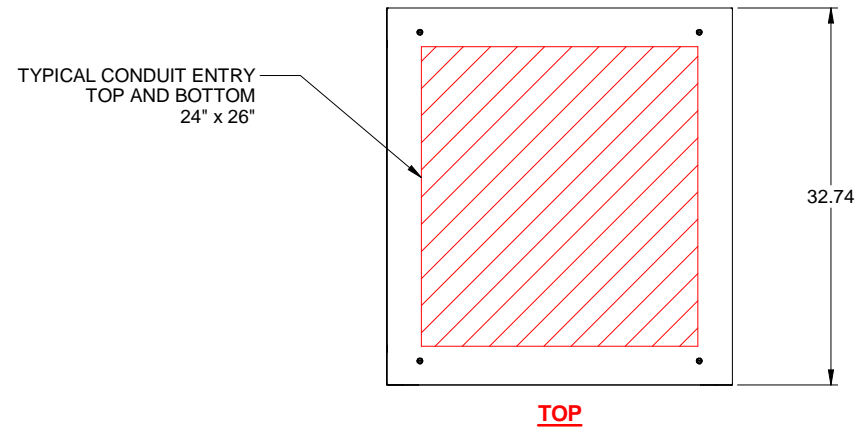


CIRCUIT BREAKER TABLE					
MFG	BREAKER FRAME	CONTINUOUS CURRENT RATING	KAIC	LANDING PROVISIONS	TRIP UNIT
SQUARE D	MTZ1-FRAME	1200	50	(3) NEMA 2 HOLE Ø.562	LSI
			65		
			100		
		1600	50		
			65		
			100		



- NOTES:**
1. BYPASS DESIGNED TO BE INTEGRALLY ATTACHED TO EITHER SIDE OF UPS.
 2. APPROXIMATE BYPASS WEIGHT: 1600 LBS.
 3. CUSTOMER CONNECTIONS ARE RATED FOR 50, 65, AND 100 KAIC.
 4. THIS UNIT IS UL LISTED.
 5. BREAKERS ARE 100% RATED.

1200A-1600A MAINTENANCE BYPASS

REVISIONS	DATE	BY
0. INITIAL RELEASE	11/23/2020	J.PRY-SOCK
5. UPDATED BREAKER TABLE FOR MTZ1	11/23/2021	J.PRY-SOCK

DIMENSIONS IN: IN [MM] (REF)	SCALE - NTS -	DRAFTER J.PRY-SOCK	DATE 11/23/20	<p>MITSUBISHI ELECTRIC</p>
<p>PROPRIETARY</p> <p>This document is the property of Mitsubishi Electric Power Products, Inc. and contains proprietary and confidential information which must not be duplicated, used or disclosed other than as expressly authorized by Mitsubishi Electric Power Products, Inc.</p>		APPROVED R.DURBIN	DATE 11/23/20	
CORE/REFERENCE DRAWING (IF APPLICABLE)				<p>TITLE</p> <p>1200A-1600A MAINTENANCE BYPASS</p>
DWG. NO. UD-101197(S)		SHEET 1 OF 1		REV. 5