

MITSUBISHI 9900D 2000kVA UPS OUTLINE DRAWING

CUSTOMER -


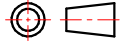
PROJECT NUMBER -

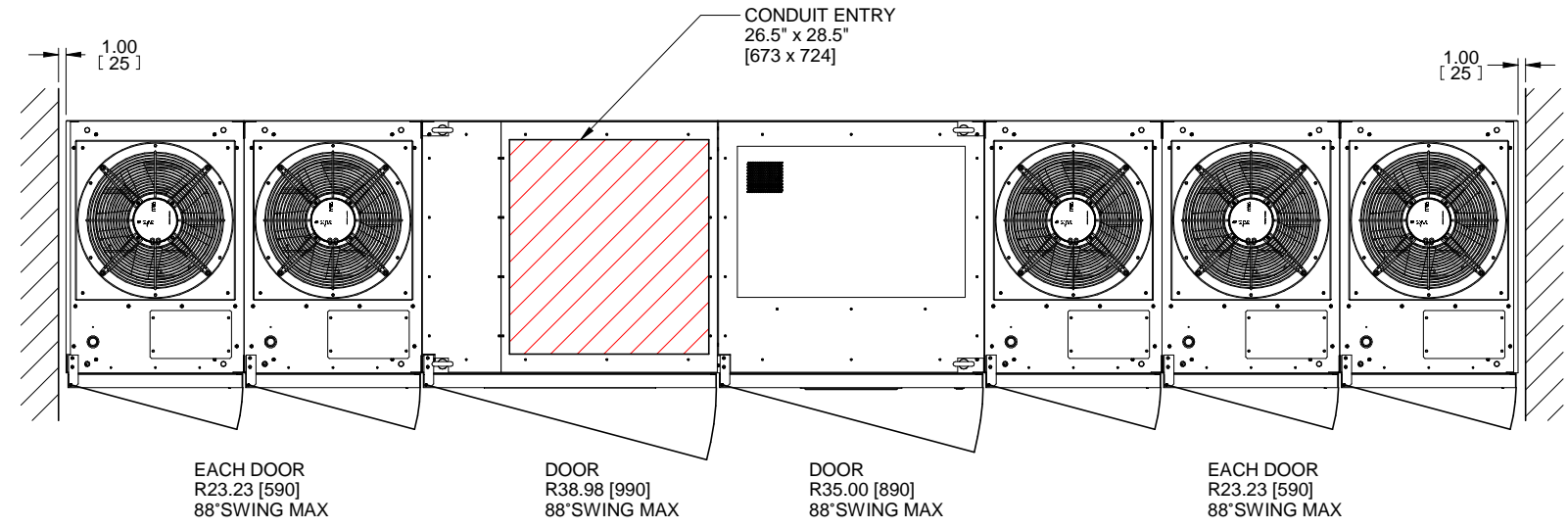
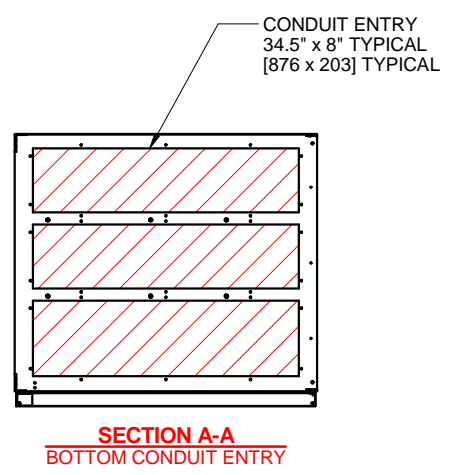
PROJECT LOCATION -

TABLE OF CONTENTS

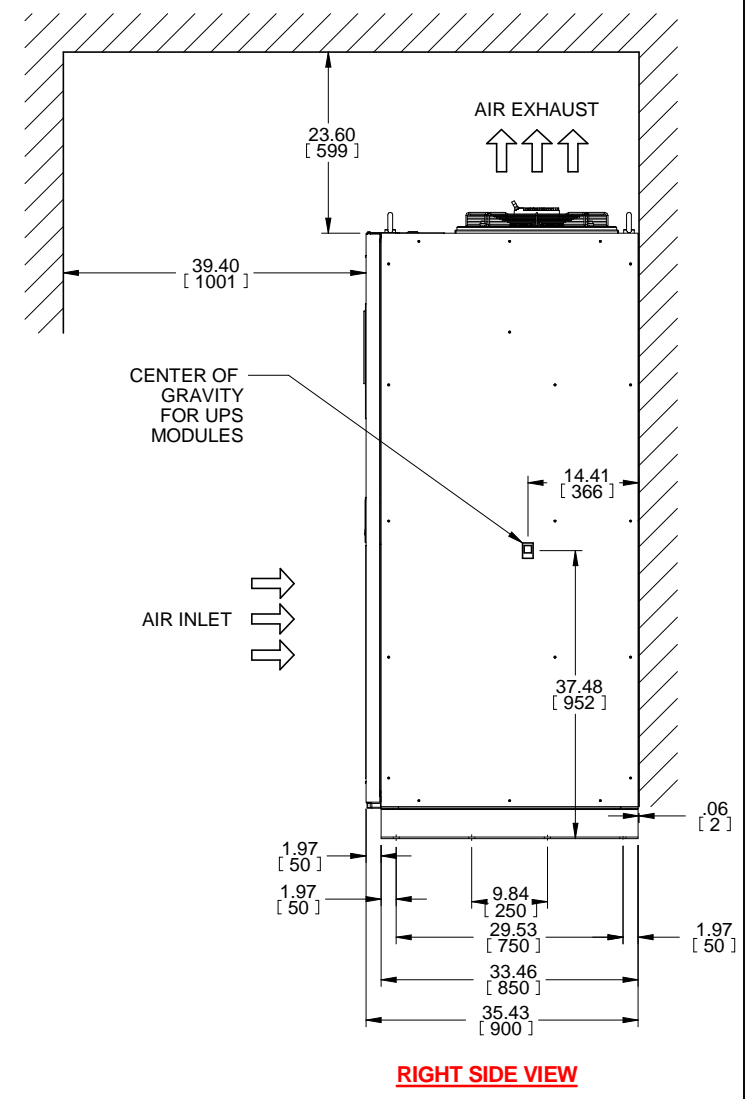
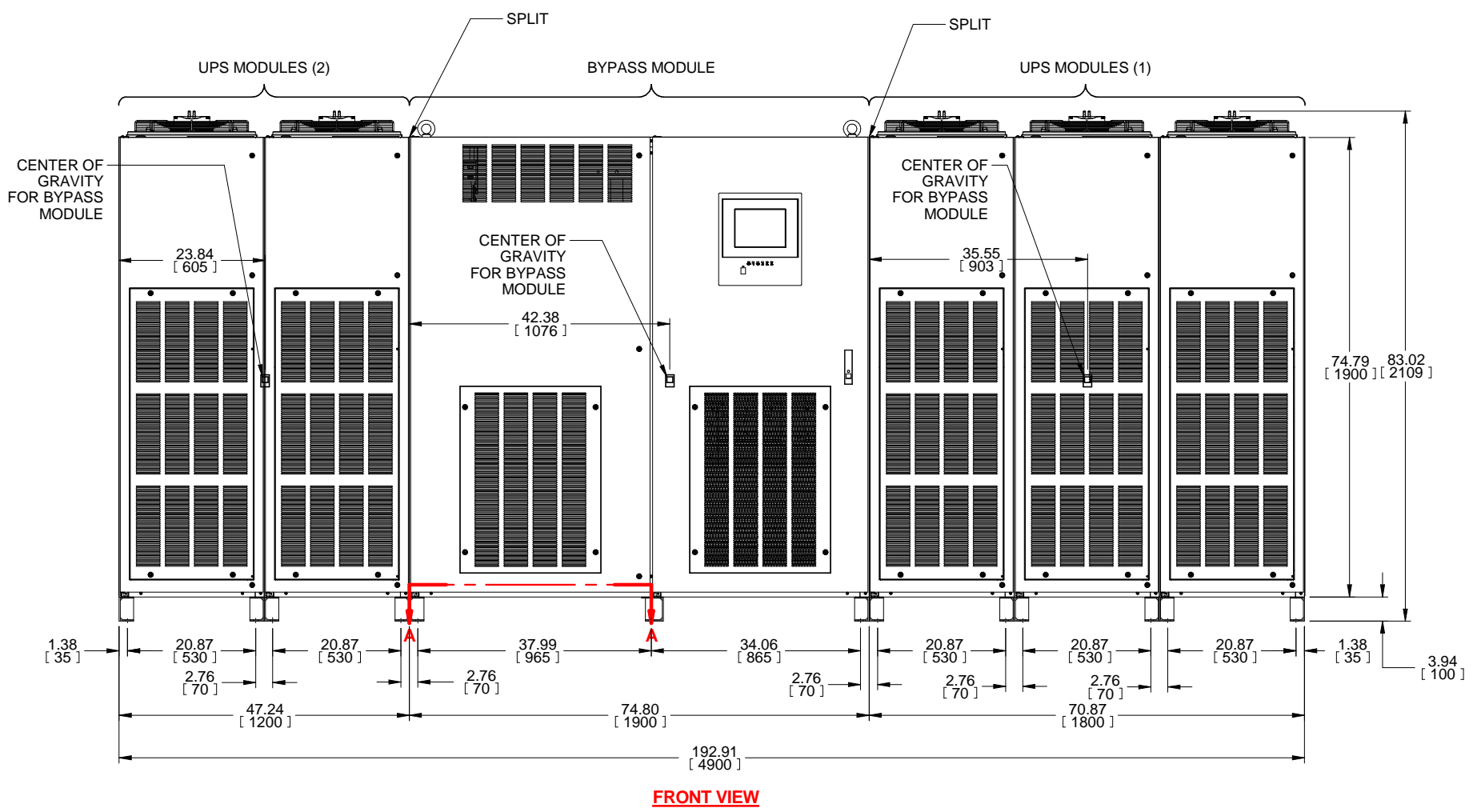
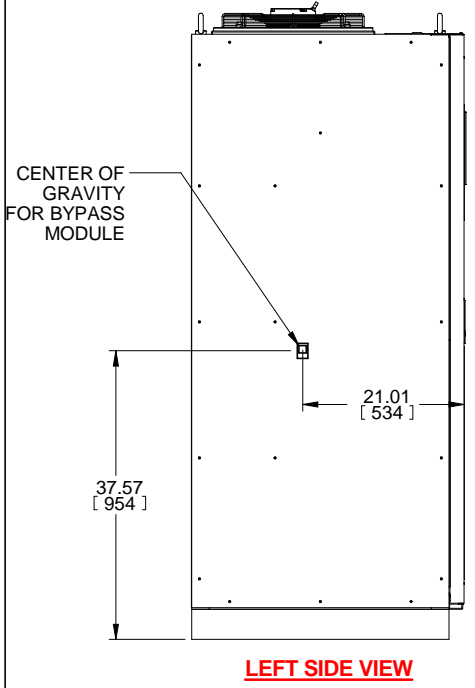
SHEET NO.	TITLE
01	COVER SHEET
02	OUTLINE
03	BUS CONNECTIONS
04	SYSTEM CONFIGURATION
05	SINGLE LINE
06	SINGLE LINE
07	
08	
09	
10	
11	
12	
13	
14	
15	

REVISIONS
0. INITIAL RELEASE PER ECN 1404 Z.ZAJAC 11/5/2019
1. ADDED SHEET 3 BUSS DETAILS, AND OVERALL DIMENSIONS AND WEIGHTS Z.ZAJAC 11/5/2019
2. UPDATED DIMENSIONS AND VIEWS FOR NEW DOOR J.PRY-SOCK 2/27/20
4. ADDED UVR CONNECTION TO SHEET 6. J.MOTT 7/10/2020
5. ADDED BUS HOLE DIAMETER AND THICKNESS DIMENSIONS. R.DURBIN 7/16/2021

DIMENSIONS IN: IN [MM] (REF)	SCALE - NTS -	DRAFTER Z.ZAJAC	DATE 7/18/19	 MITSUBISHI ELECTRIC
<small>PROPRIETARY</small> This document is the property of Mitsubishi Electric Power Products, Inc. and contains proprietary and confidential information which must not be duplicated, used or disclosed other than as expressly authorized by Mitsubishi Electric Power Products, Inc.		APPROVED A.WINTER	DATE 7/18/19	
 CORE/REFERENCE DRAWING (IF APPLICABLE)		TITLE 9900D 2000KVA OUTLINE DRAWING		DWG. NO. UD-100993
			SHEET 1 OF 6	REV. 5

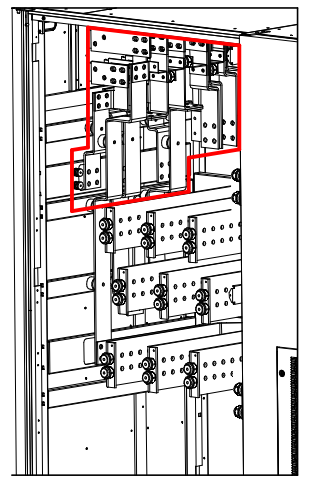


- NOTES:
1. DIMENSIONS ARE SHOWN IN INCHES" [MILLIMETERS].
 2. SIDE SPACE "1" [25] IS NOT REQUIRED WHEN SIDECARS ARE USED.
 3. CABINET SHOULD BE MAINTAINED UPRIGHT WITHIN +/- 15° DURING HANDLING.
 4. EACH BASE CHANNEL HAS 2 OR 4 x 0.8" [20] DIAMETER HOLES TO FIX UPS ON THE GROUND.
 5. LIFTING EYES OPTIONAL.
 6. APPROXIMATE WEIGHT.
- | | |
|----------------|--------------------|
| UPS MODULE (1) | 5,200LBS (2,360kg) |
| UPS MODULE (2) | 3,510LBS (1,600kg) |
| BYPASS MODULE | 2,760LBS (1,260kg) |
7. FLOOR SHALL BE FLAT AND LEVEL TO 0.3" SURROUNDING UPS MOUNTING.

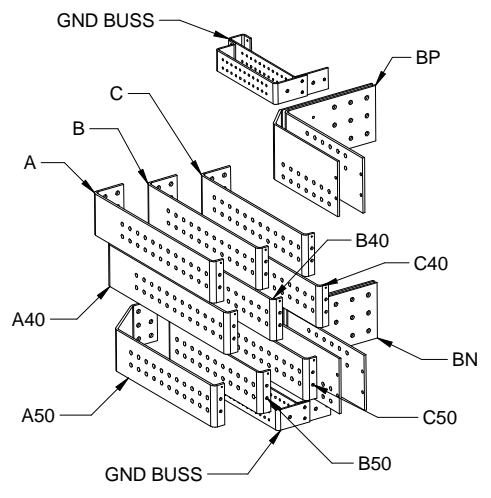


REVISIONS	0. INITIAL RELEASE PER ECN 1404 Z.ZAJAC 11/5/2019
	1. ADDED SHEET 3 BUSS DETAILS, AND OVERALL DIMENSIONS AND WEIGHTS Z.ZAJAC 11/5/2019
	2. UPDATED DIMENSIONS AND VIEWS FOR NEW DOOR J.PRY-SOCK 2/27/20
	4. ADDED UVR CONNECTION TO SHEET 6. J.MOTT 7/10/2020
	5. ADDED BUS HOLE DIAMETER AND THICKNESS DIMENSIONS. R.DURBIN 7/16/2021

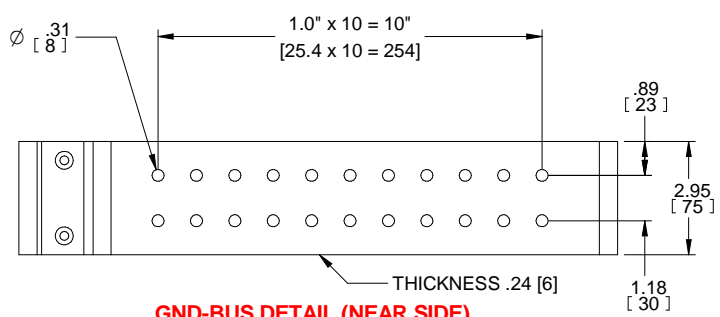
DIMENSIONS IN: IN [MM] (REF)	SCALE - NTS -	DRAFTER Z.ZAJAC	DATE 7/18/19	
<small>PROPRIETARY</small> This document is the property of Mitsubishi Electric Power Products, Inc. and contains proprietary and confidential information which must not be duplicated, used or disclosed other than as expressly authorized by Mitsubishi Electric Power Products, Inc.		APPROVED A.WINTER	DATE 7/18/19	
CORE/REFERENCE DRAWING (IF APPLICABLE)		TITLE 9900D 2000KVA OUTLINE DRAWING		
		DWG. NO. UD-100993	SHEET 2 OF 6	REV. 5



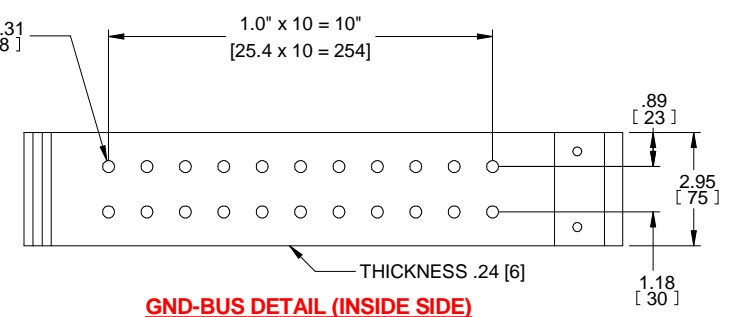
VIEW OF BYPASS TO MODULE BUSS



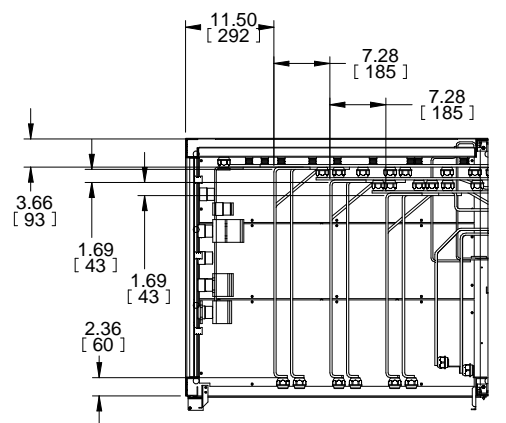
FRONT-TOP-LEFT VIEW OF TERMINAL BUSS



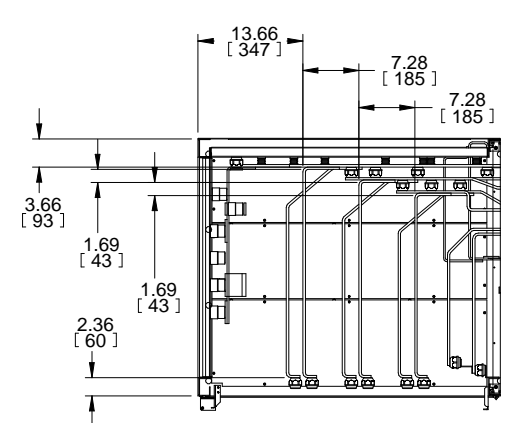
GND-BUS DETAIL (NEAR SIDE)



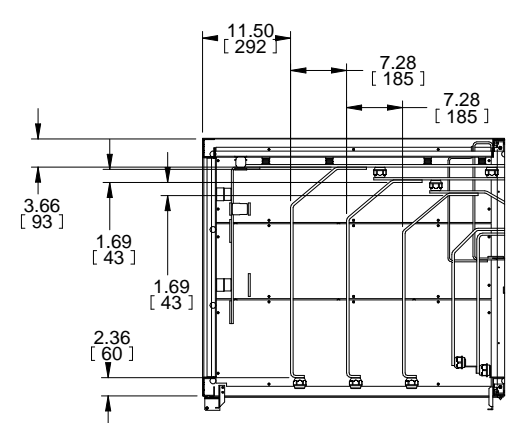
GND-BUS DETAIL (INSIDE SIDE)



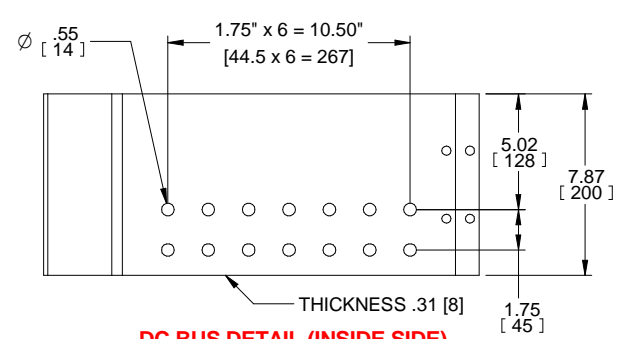
SECTION D-D (AC BUSS)



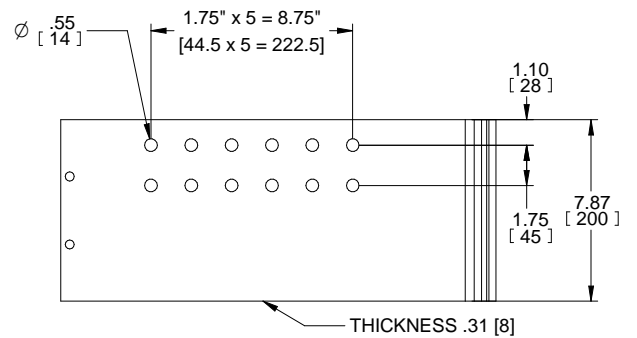
SECTION C-C (AC BUSS)



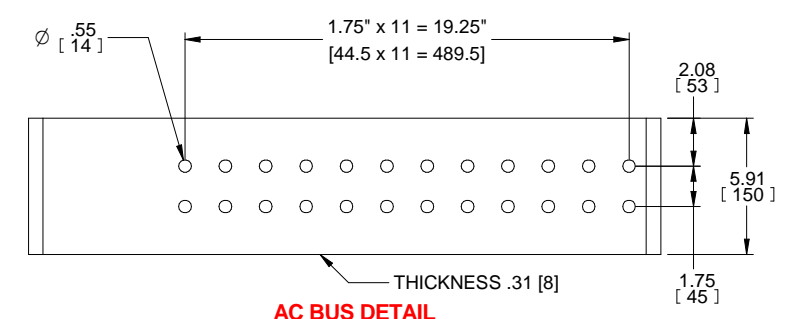
SECTION B-B (AC BUSS)



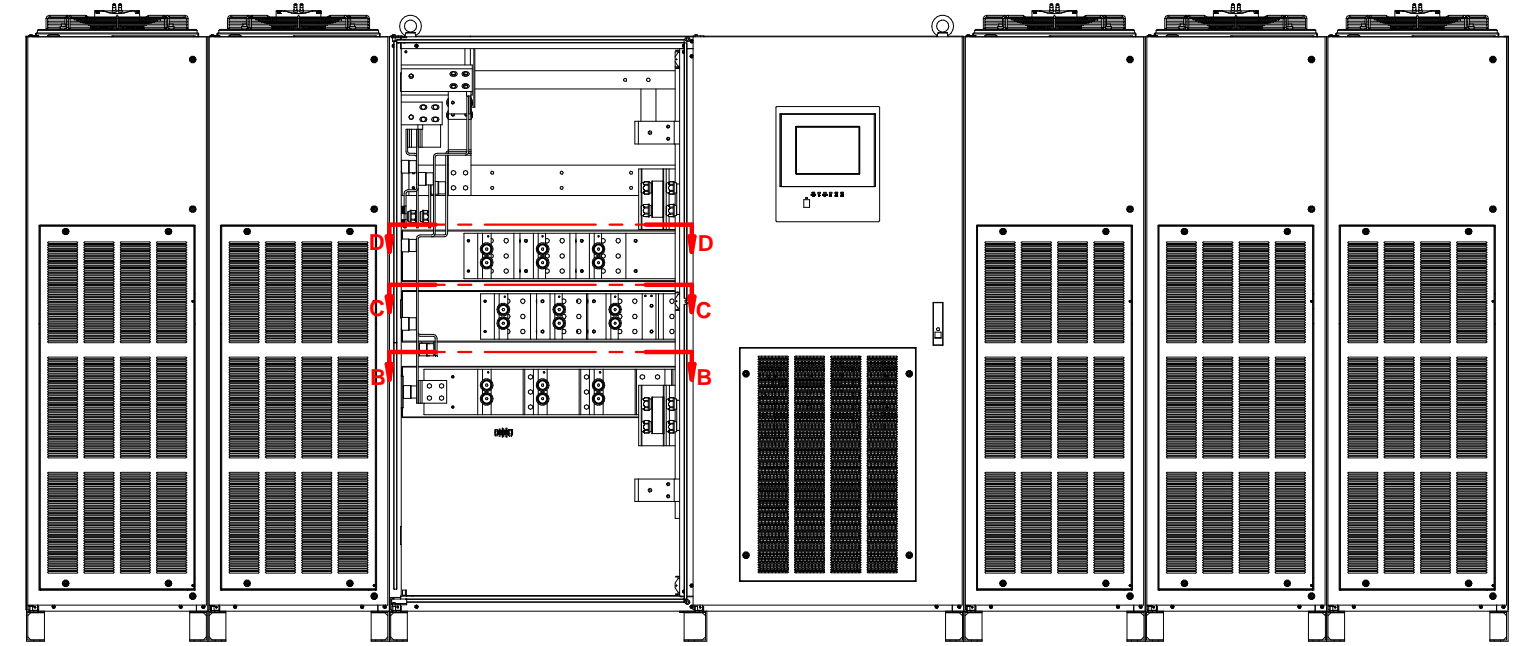
DC BUS DETAIL (INSIDE SIDE)



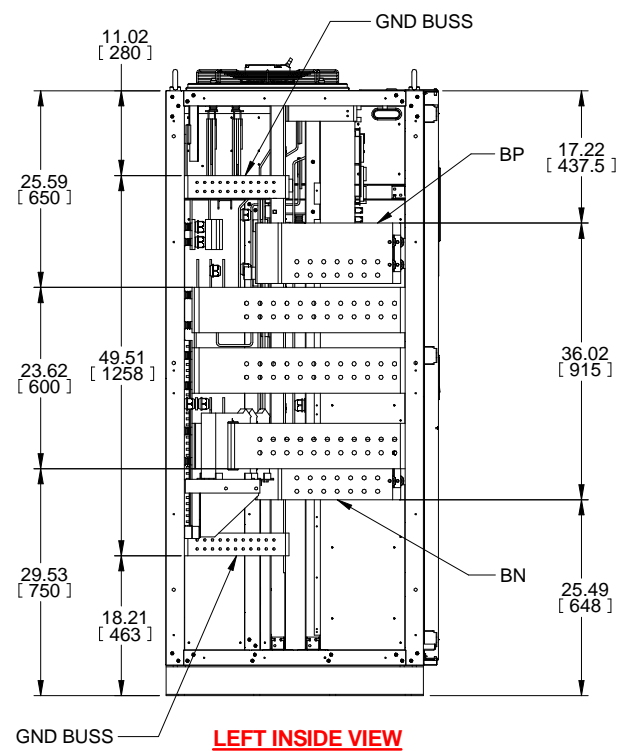
DC BUS DETAIL (NEAR SIDE)



AC BUS DETAIL



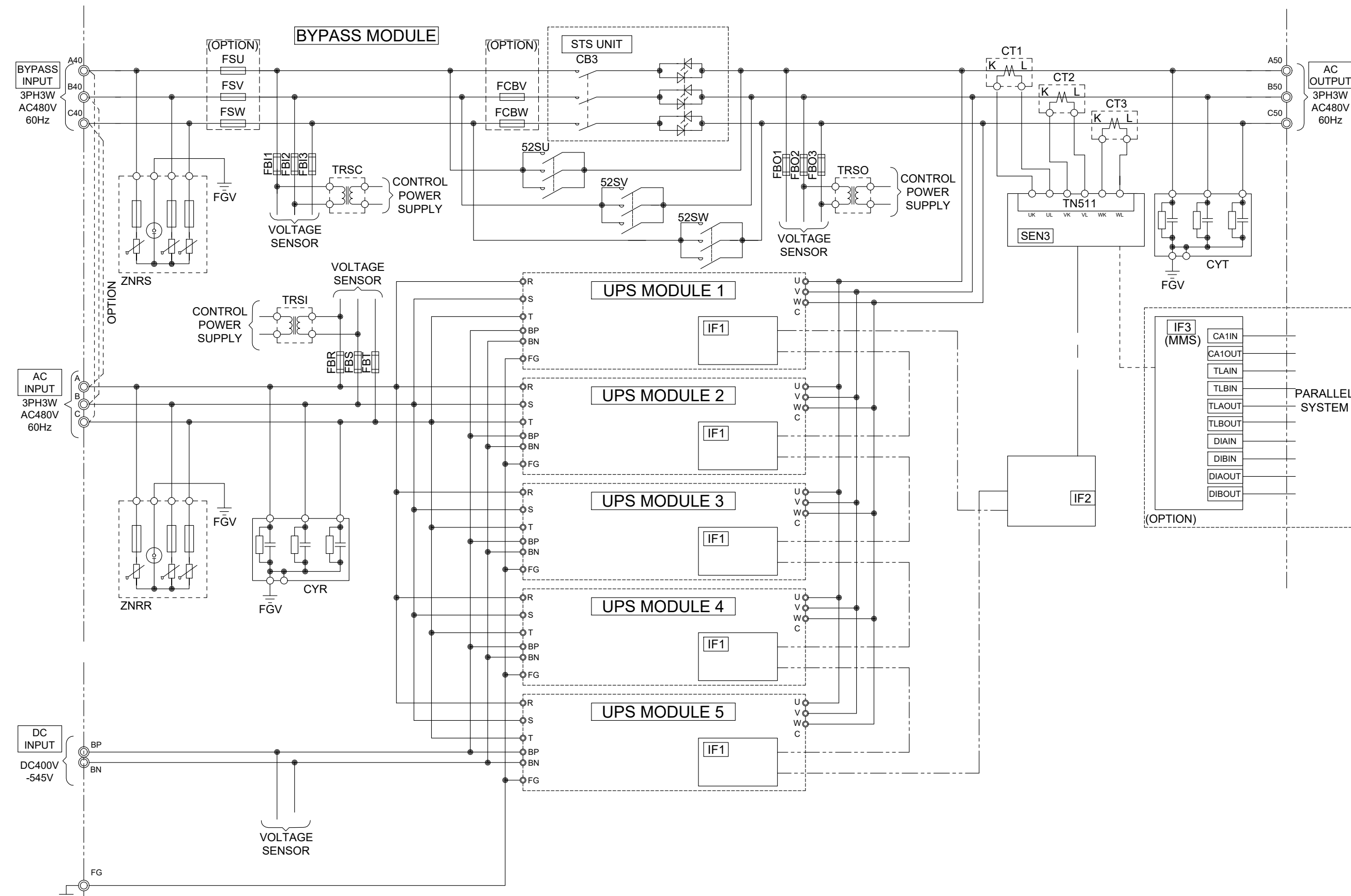
FRONT INSIDE VIEW



LEFT INSIDE VIEW

REVISIONS	DESCRIPTION
0.	INITIAL RELEASE PER ECN 1404 Z.ZAJAC 11/5/2019
1.	ADDED SHEET 3 BUSS DETAILS, AND OVERALL DIMENSIONS AND WEIGHTS Z.ZAJAC 11/5/2019
2.	UPDATED DIMENSIONS AND VIEWS FOR NEW DOOR J.PRY-SOCK 2/27/20
4.	ADDED UVR CONNECTION TO SHEET 6. J.MOTT 7/10/2020
5.	ADDED BUS HOLE DIAMETER AND THICKNESS DIMENSIONS. R.DURBIN 7/16/2021

DIMENSIONS IN: IN [MM] (REF)	SCALE - NTS -	DRAFTER Z.ZAJAC	DATE 7/18/19	
<small>PROPRIETARY</small> <small>This document is the property of Mitsubishi Electric Power Products, Inc. and contains proprietary and confidential information which must not be duplicated, used or disclosed other than as expressly authorized by Mitsubishi Electric Power Products, Inc.</small>		APPROVED A.WINTER	DATE 7/18/19	
<small>CORE/REFERENCE DRAWING (IF APPLICABLE)</small>		<small>TITLE</small> 9900D 2000KVA OUTLINE DRAWING		<small>SHEET 3 OF 6</small> UD-100993
				<small>REV.</small> 5



REVISIONS
0. INITIAL RELEASE PER ECN 1404 Z.ZAJAC 7/23/2019
1. ADDED SHEET 3 BUSS DETAILS, AND OVERALL DIMENSIONS AND WEIGHTS Z.ZAJAC 11/5/2019
2. UPDATED DIMENSIONS AND VIEWS FOR NEW DOOR J.PRY-SOCK 2/27/20
3. ADDED LVR CONNECTION TO SHEET 6. J.MOTT 7/10/2020
4. ADDED BUS BOLE DIAMETER AND THICKNESS DIMENSIONS R.DURBIN 7/16/21

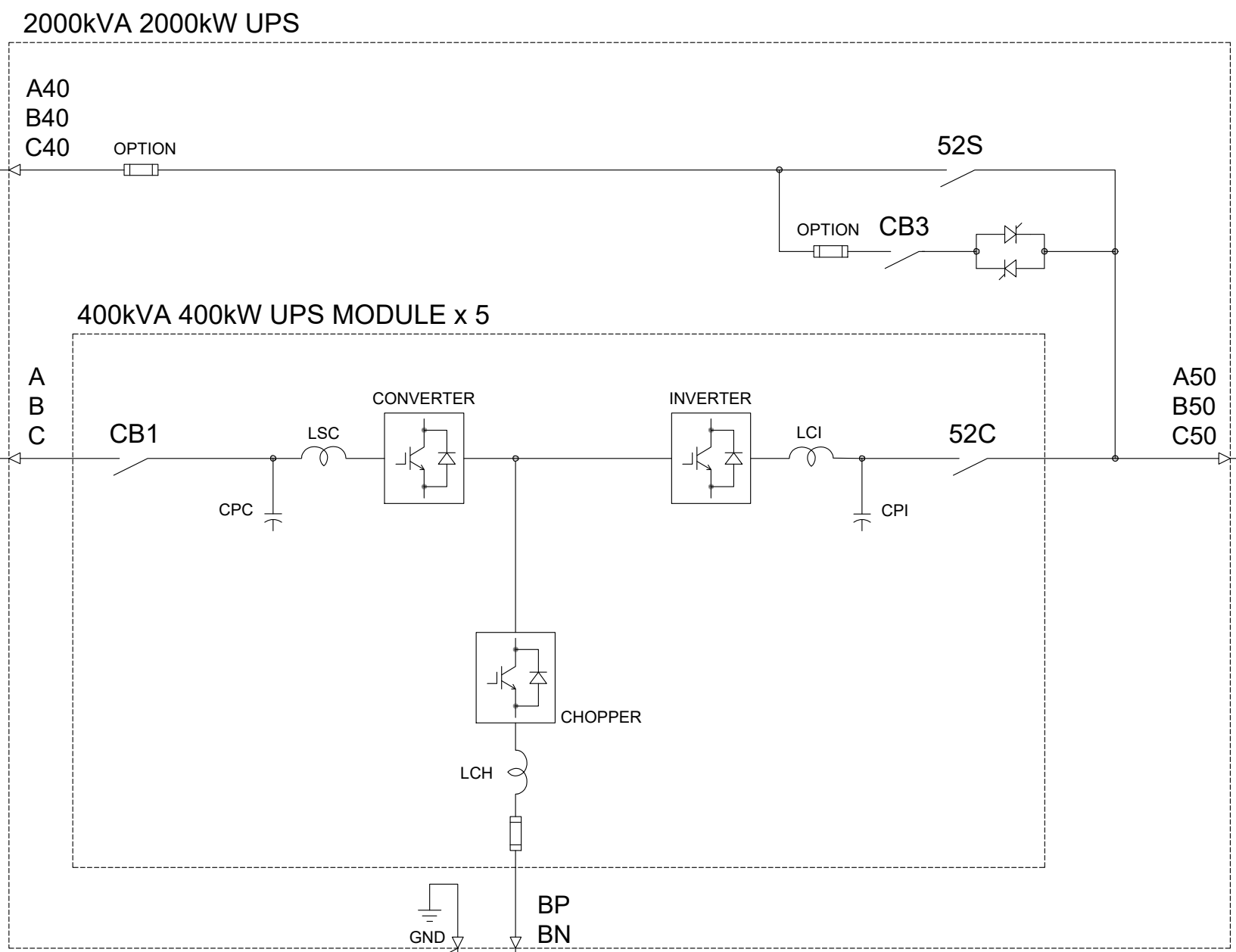
DIMENSIONS IN: IN [MM]	SCALE: -NTS-	DRAFTER: Z.ZAJAC	DATE: 7/18/2019	<p>MITSUBISHI ELECTRIC</p>
PROPRIETARY <small>This document is the property of Mitsubishi Electric Power Products, Inc. and contains proprietary and confidential information which must not be duplicated, used or disclosed other than as expressly authorized by Mitsubishi Electric Power Products, Inc.</small>		APPROVED: N.RIEMER	DATE: 7/18/2019	
CORE [REFERENCE] DRAWING				TITLE: 9900D 2000KVA OUTLINE DRAWING DWG. NO. UD-100993 SHEET 4 OF 6 REV. 5

BYPASS INPUT

3-PHASE 3-WIRE
AC480V 60Hz

AC INPUT

3-PHASE 3-WIRE
AC480V 60Hz

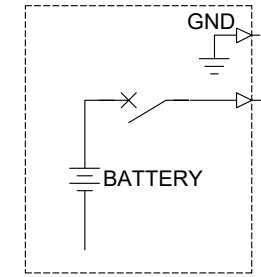


AC OUTPUT

3-PHASE 3-WIRE
AC480V 60Hz

DC INPUT

NOMINAL VOLTAGE 480V
FINAL VOLTAGE 400V



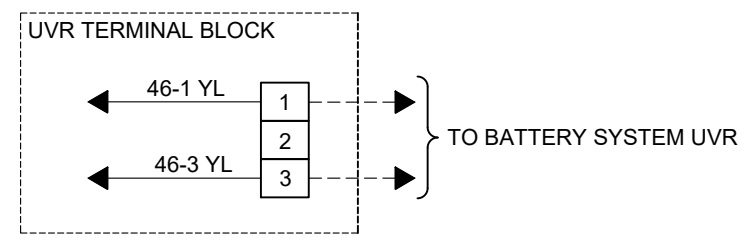
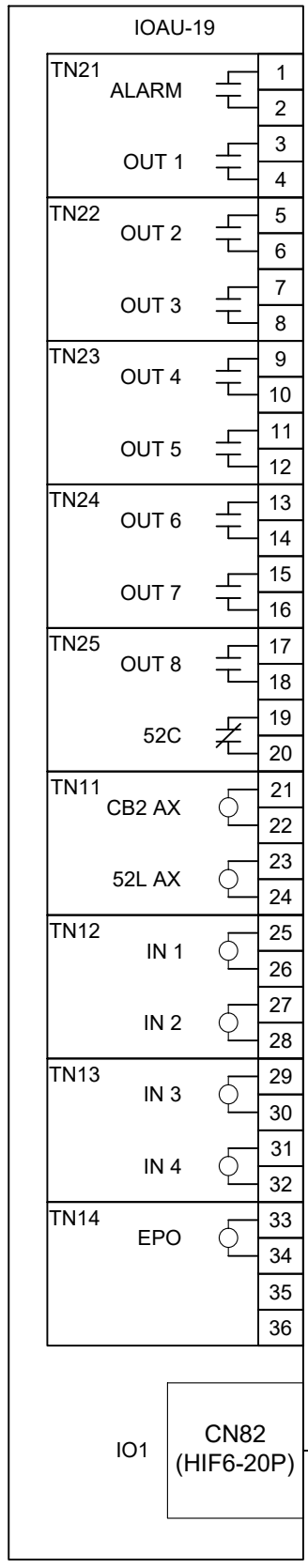
REVISIONS
0. INITIAL RELEASE PER
ECN 1404
ZZAJAC 7/23/2019

1. ADDED SHEET 3
BUSS DETAILS, AND
OVERALL DIMENSIONS
AND WEIGHTS
ZZAJAC 11/5/2019
2. UPDATED
DIMENSIONS AND
VIEWS FOR NEW
DOOR
J.PRY-SOCK 2/27/20
4. ADDED LVR
CONNECTION TO
SHEET 6.
J.MOTT 7/10/2020
5. ADDED BUS
POLE DIAMETER AND
THICKNESS
DIMENSIONS
R.DURBIN 7/16/21

DIMENSIONS IN: IN [MM]	SCALE - NTS -	DRAFTER Z.ZAJAC	DATE 7/18/2019	<p>MITSUBISHI ELECTRIC</p>	
<p>PROPRIETARY</p> <small>This document is the property of Mitsubishi Electric Power Products, Inc. and contains proprietary and confidential information which must not be duplicated, used or disclosed other than as expressly authorized by Mitsubishi Electric Power Products, Inc.</small>		APPROVED N.RIEMER	DATE 7/18/2019		TITLE 9900D 2000KVA OUTLINE DRAWING
CORE [REFERENCE] DRAWING		DWG. NO.		SHEET 5 OF 6	REV. 5
		UD-100993			

I/O ASSIGNMENTS	
ALARM	SUMMARY ALARM
*OUT 1	LOAD ON BYPASS
*OUT 2	LOAD ON INVERTER
*OUT 3	BATTERY OPERATION
*OUT 4	CONVERTER OPERATION
*OUT 5	BATTERY LOW VOLTAGE
*OUT 6	OVERLOAD
*OUT 7	SPARE
*OUT 8	TOTAL ALARM
52C	52C CLOSED
CB2 AX	BATTERY BREAKER PANEL
52L AX	LOAD CIRCUIT SWITCH
*IN 1	REMOTE INVERTER START
*IN 2	REMOTE INVERTER STOP
*IN 3	BATTERY TEMP. HIGH
*IN 4	POWER DEMAND
EPO	REMOTE EPO
35/36	DO NOT USE

*USER PROGRAMMABLE INPUT/OUTPUT



REVISIONS

10. INITIAL RELEASE PER ECN 1404 ZZAJAC 7/23/2019
1. ADDED SHEET 3 BUSS DETAILS, AND OVERALL DIMENSIONS AND WEIGHTS ZZAJAC 11/5/2019
2. UPDATED DIMENSIONS AND VIEWS FOR NEW DOOR J.PRY-SOCK 2/27/20
4. ADDED UVR CONNECTION TO SHEET 6. J.MOTT 7/10/2020
5. ADDED BUS POLE DIAMETER AND THICKNESS DIMENSIONS R.DURBIN 7/16/21

DIMENSIONS IN: IN [MM]	SCALE - NTS -	DRAFTER Z.ZAJAC	DATE 7/18/2019	<p>MITSUBISHI ELECTRIC</p>	
<small>PROPRIETARY</small> <small>This document is the property of Mitsubishi Electric Power Products, Inc. and contains proprietary and confidential information which must not be duplicated, used or disclosed other than as expressly authorized by Mitsubishi Electric Power Products, Inc.</small>		APPROVED N.RIEMER	DATE 7/18/2019		TITLE 9900D 2000KVA OUTLINE DRAWING
CORE [REFERENCE] DRAWING				DWG. NO. UD-100993	SHEET 6 OF 6 REV. 5