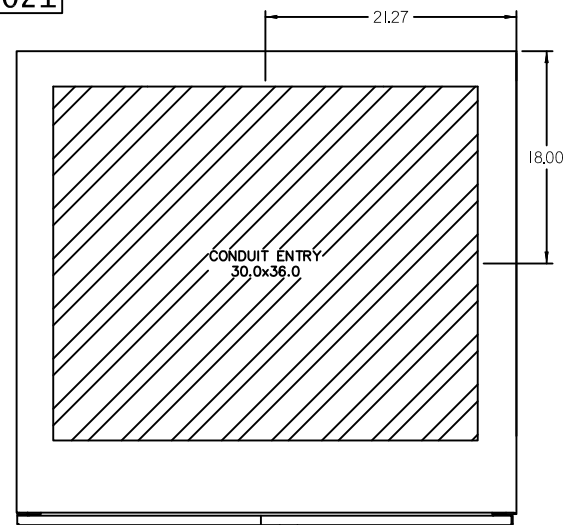
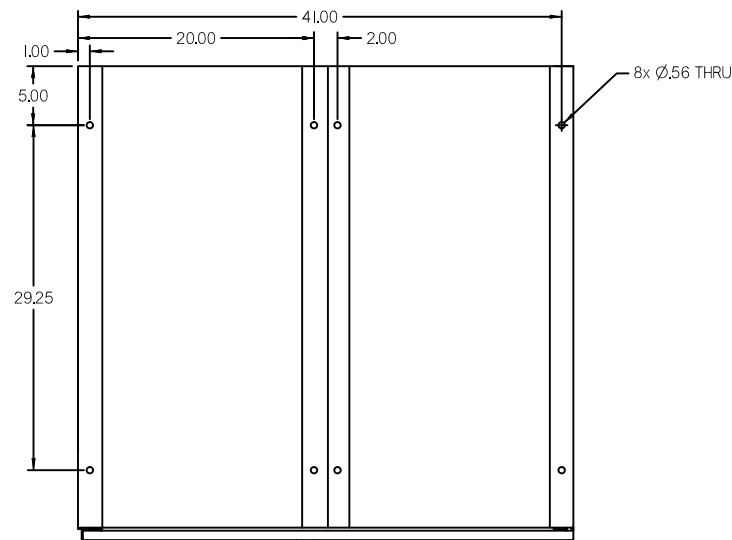


DWG. NO. UD-100021



TOP VIEW  
SHOWING CABLE ENTRY



BOTTOM VIEW  
SHOWING MOUNTING HOLES

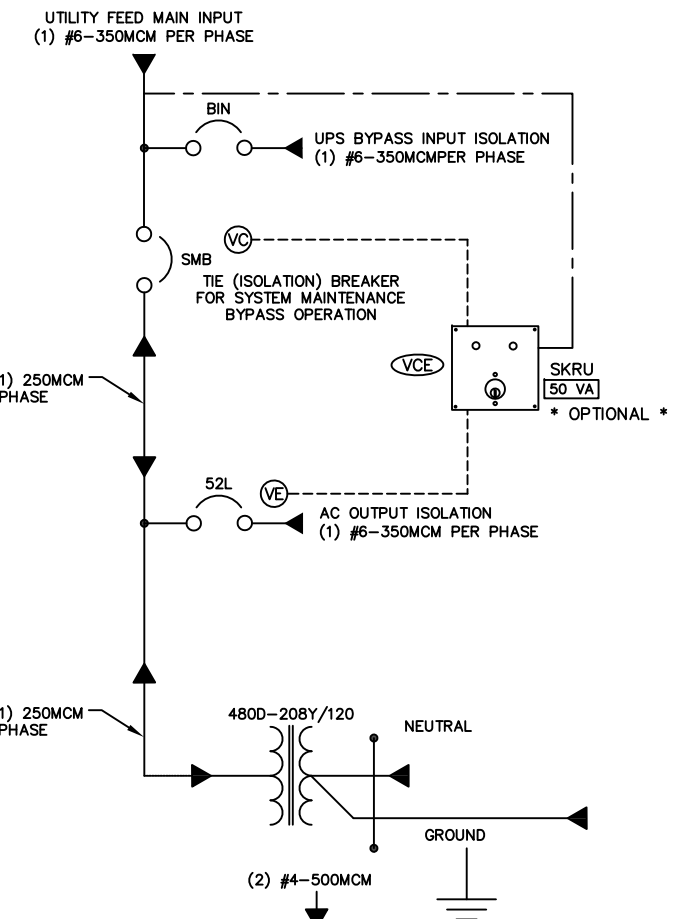
NAMEPLATE LEGEND	
ITEM	DESCRIPTION
NP1	UPS MAINTENANCE MODE SETUP PROCEDURE
NP2	UPS BYPASS INPUT ISOLATION
NP3	SYSTEM MAINTENANCE BYPASS
NP4	UPS OUTPUT BREAKER

UPS kVA	CIRCUIT BREAKER SUMMARY					
	Mfg.	BREAKER SIZE	FRAME SIZE	TRIP SETTING	P/N	BREAKER AIC
225	SIEMENS	J-FRAME	450A	350AT	JXD63B350	35k
150		F-FRAME	250A	250AT	FXD63B225	

TP1 TRANSFORMER RATINGS							
kVA	PRIMARY	SECONDARY	FREQ.	MATERIAL	TEMP. RISE	K-FACTOR	IZ%
225	480	208	60Hz	A1	150°C	K13	3.5-7%
150	480	208	60Hz	A1	150°C	K13	3-6.5%

TRANSFORMER TERMINAL DETAIL		
PART NUMBER	KVA	LOW VOLTAGE
		LUG/TERMINAL DETAIL
SK3A0225KB3SHX	225	MECHANICAL
SK3A0150KB3SHX	150	MECHANICAL

ONE-LINE DIAGRAM



SPECIFICATIONS

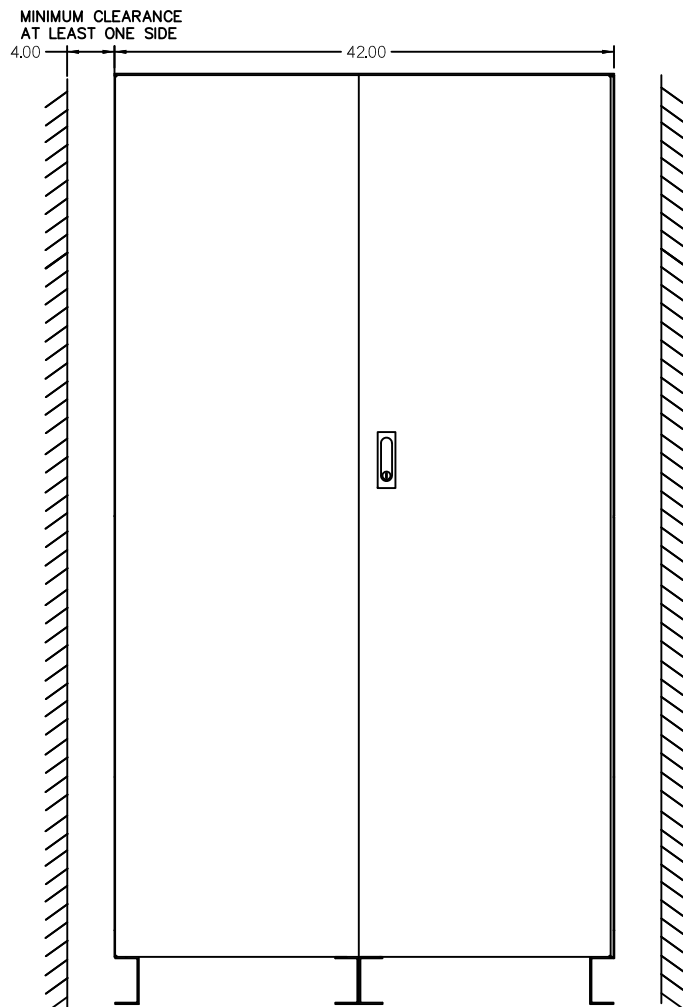
- SYSTEM RATING:  
VOLTAGE: PRIMARY: 480V/, 3P/3W, 60Hz  
SECONDARY: 208V, 3P/4W 200% NEUTRAL, 60Hz  
AMPERES: 225kVA-350AT
- INTERRUPT RATING: THE SHORT CIRCUIT INTERRUPTING CAPABILITY IS 65,000 RMS SYMMETRICAL AMPERES AT 480 VOLTS, BASED ON THE LOWEST SHORT CIRCUIT CURRENT RATING OF THE INDIVIDUAL OR SERIES RATED COMBINATION DEVICE INSTALLED AT TIME OF MANUFACTURE. THE BUSSING STRUCTURE IS CONSTRUCTED TO WITHSTAND FAULTS OF 65,000 RMS SYMMETRICAL AMPERES.
- ALL COPPER BUSS RATED AT 1000A PER SQUARE INCH.
- TRANSFORMER (T1) IS K13, TP1. ALUMINUM WINDINGS (STANDARD).
- SHIPPING WEIGHTS w/TRANSFORMER: 225kVA-2690LBS.

GENERAL NOTES:

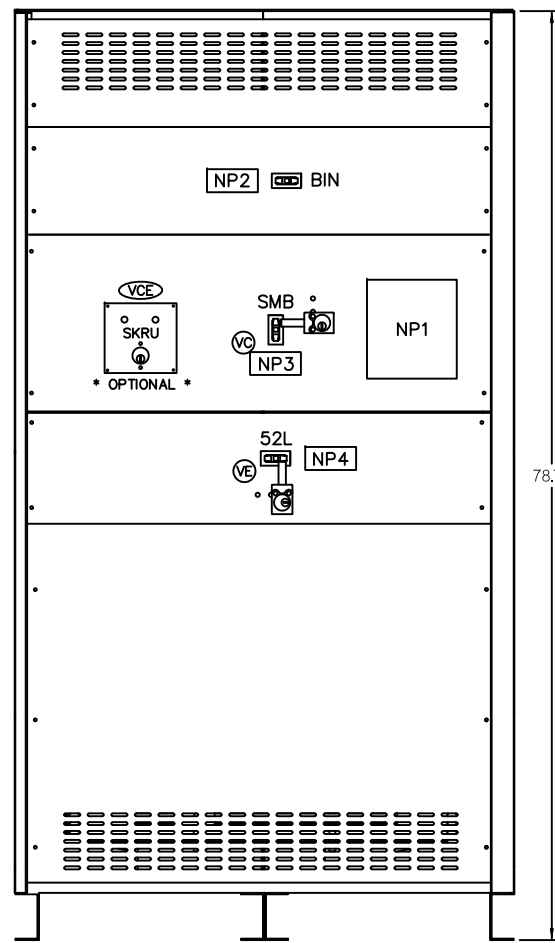
- NEMA 1 CONSTRUCTION, BUILT TO UL891, LISTED TO UL1778.  
TO BE IN ACCORDANCE WITH MITSUBISHI BYPASS PANEL SPECIFICATION U-ENS00092.
- FRONT AND SIDE ACCESS ONLY.
- FINISH: POWDER COAT.
- LABELS TO CONFORM TO UL969, MARKING & LABELING SYSTEMS.
- DOOR SWING 100" MAX.

PART NUMBER BREAK DOWN  
MPC-BKM0250YSE0350005

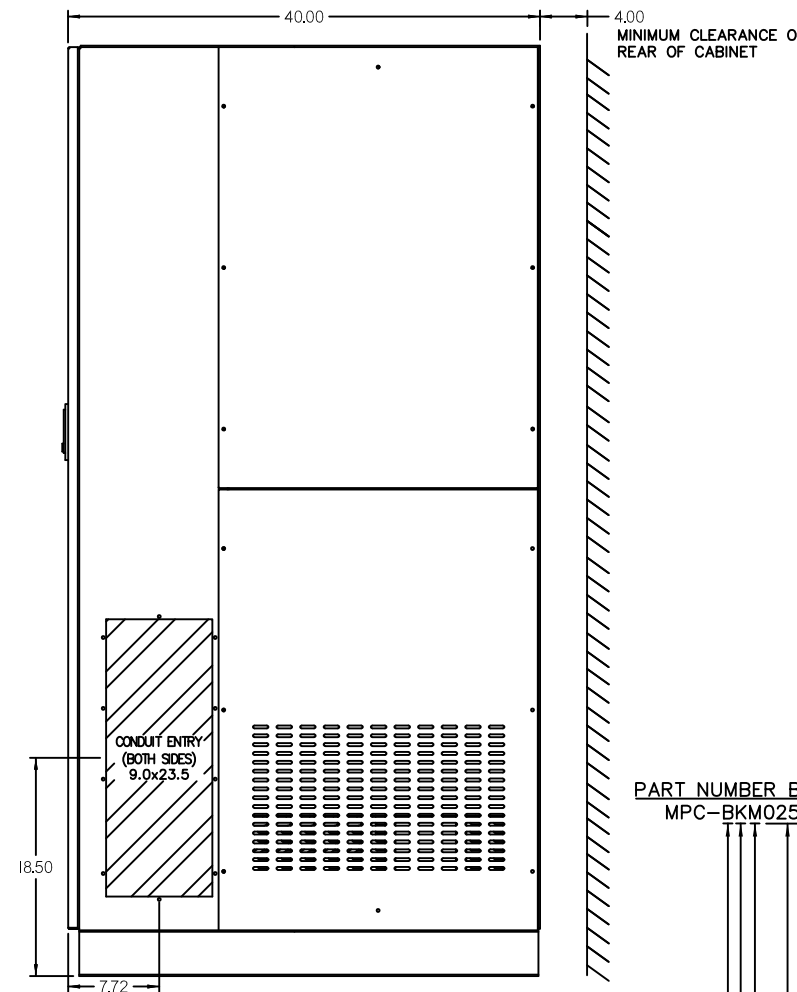
- MFR
- NUMBER OF LOAD CENTERS: N/A
- NUMBER OF SUBFEED BREAKERS: N/A
- KAIC RATING: 035, 065
- INTERLOCK TYPE: K=KIRKKEY, E=SKRU
- BREAKER MANUFACTURER: S=SIEMENS
- TRANSFORMER: Y=DELTA WYE, ALUMINUM XFMR
- RATING (A): 0250, 0350
- OUTPUT VOLTAGE: B=120/208, M=277/420
- INPUT VOLTAGE: K=480
- COLOR: A=BEIGE, B=BLACK



FRONT VIEW



FRONT VIEW  
WITH DOOR REMOVED



RIGHT VIEW

REVISIONS	DATE	DESCRIPTION
0	05/15/09	INITIAL RELEASE
1	05/15/09	REVISED CABINET LAYOUT
2	03/09/17	REVISED TITLE SPECS
3	07/30/21	ADDED TABLES Z.ZAJAC
4	09/22/21	UPDATED PART NUMBER MATRIX Z.ZAJAC

DIM. IN	MM [IN]	SCALE	NTS	DRAFTER	N. RIEMER	DATE	05/15/09
<p>PROPRIETARY</p> <p>This document is the property of Mitsubishi Electric Power Products, Inc. and contains proprietary and confidential information which must not be duplicated, used or disclosed other than as expressly authorized by Mitsubishi Electric Power Products, Inc.</p>				CHECKED	N. RIEMER	DATE	05/15/09
				ENGINEER	K. BEAMER	DATE	05/15/09
REF DWG. NO.				APPROVED	K. BEAMER	DATE	05/15/09
FILE LOCATION:							

MITSUBISHI ELECTRIC POWER PRODUCTS, INC. WARRENDALE, PA.

TITLE 9900A PERIPHERAL 150-225kVA BYPASS WITH TRANSFORMER

DWG. NO. UD-100021 REV. 4