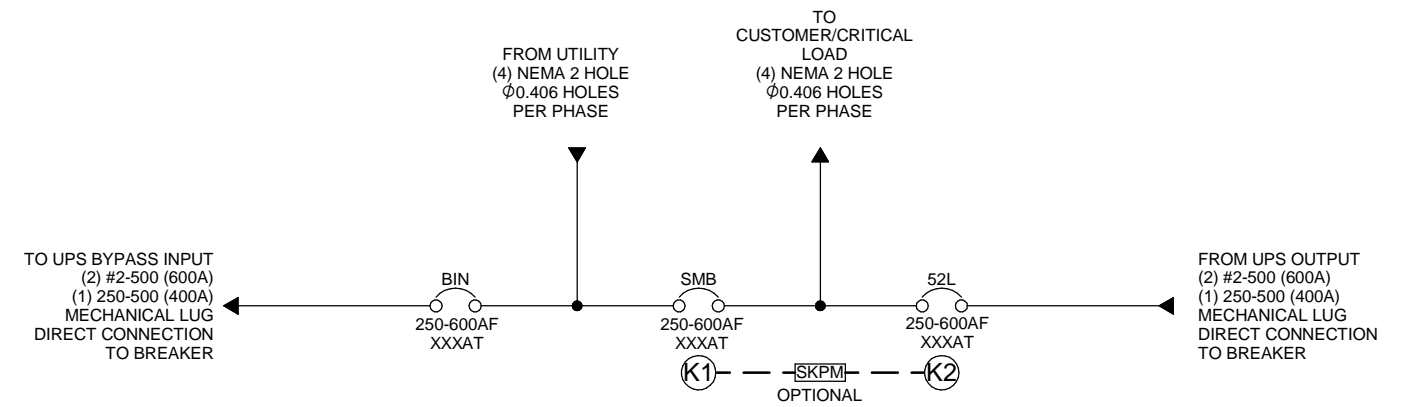
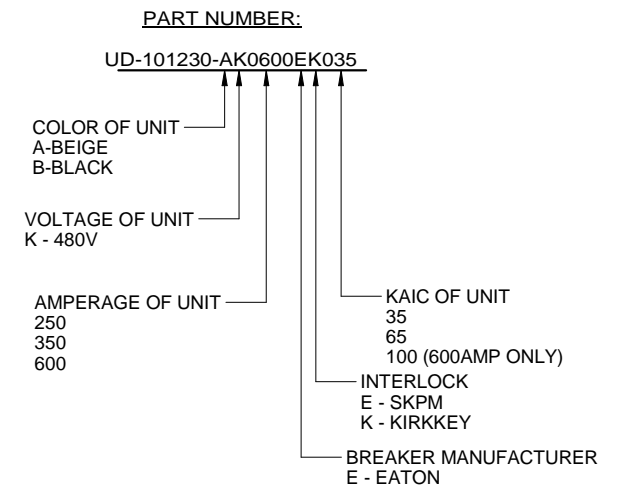
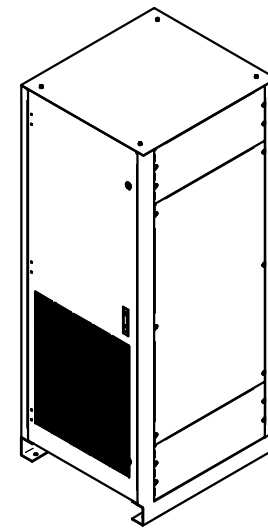
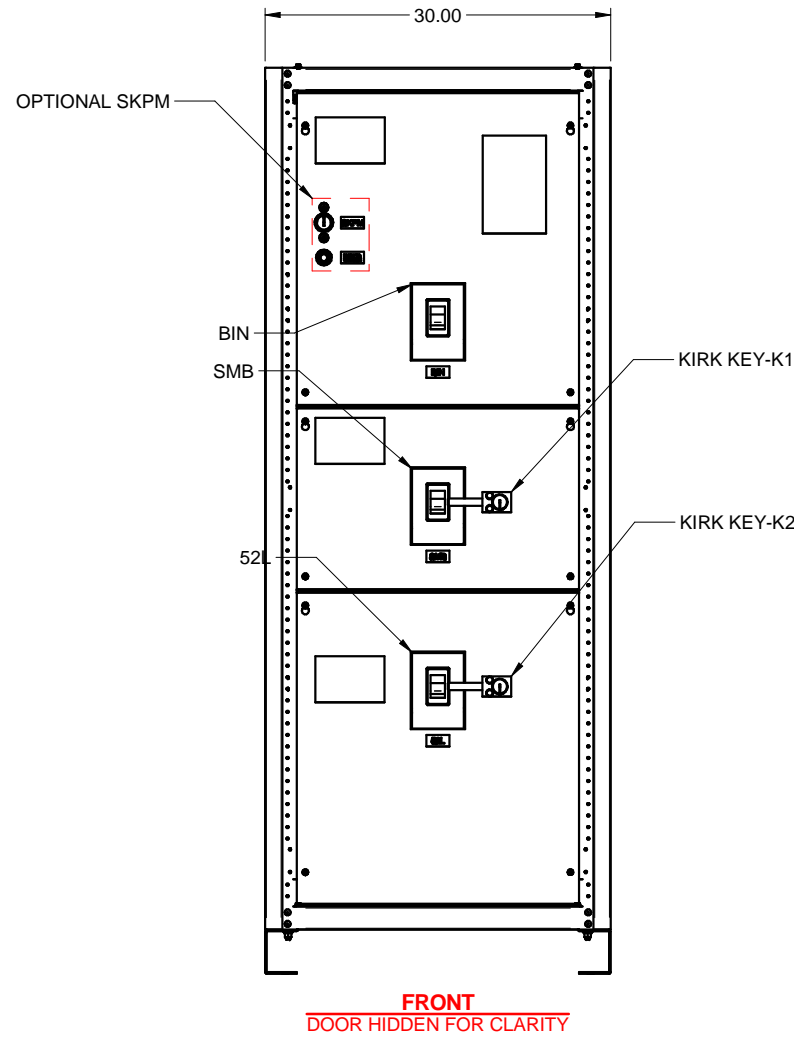
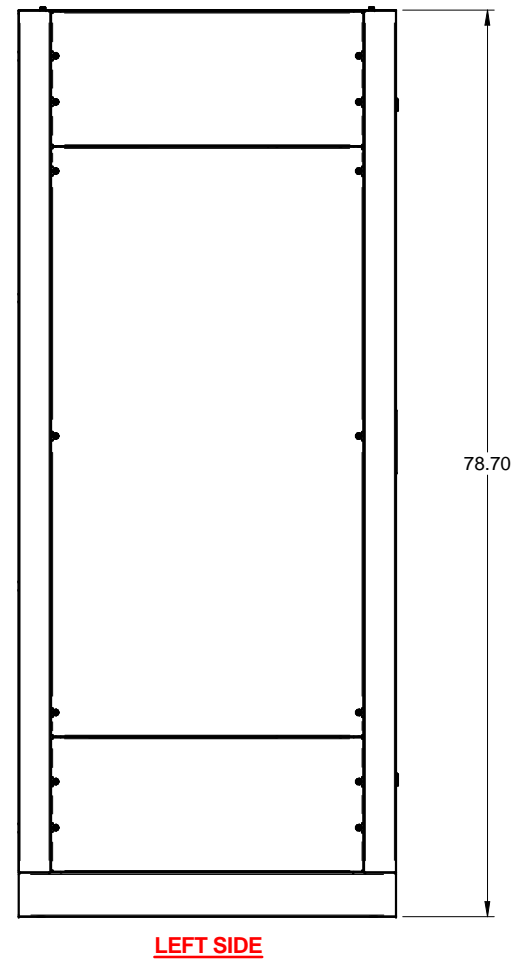
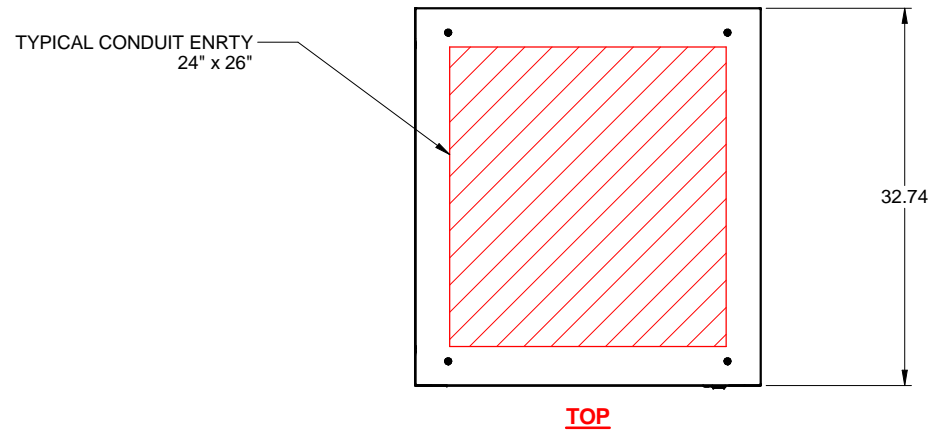


CIRCUIT BREAKER TABLE				
MFG	BREAKER FRAME	AMP	KAIC	LANDING PROVISIONS
EATON	PD3-FRAME	250	35	(1) 250-500KCMIL
		350		
		600		
		250	65	(1) 250-500KCMIL
		350		
		600		
		600	100	(2) #2-500KCMIL



- NOTES:
1. BYPASS DESIGNED TO BE SET ON EITHER SIDE OF UPS.
 2. APPROXIMATE WEIGHT: 650LBS
 3. THIS UNIT IS UL LISTED.
 4. CONSULT FACTORY FOR ADDITIONAL BYPASS OPTIONS.
 5. BREAKERS ARE 80% RATED.

250-600A MAINTENANCE BYPASS

REVISIONS	DATE	DESCRIPTION
6. INITIAL RELEASE	8/11/2020	J.PRY-SOCK
7. UPDATED SINGLE LINE FOR FRAME AMP	8/21/2020	J.PRY-SOCK

DIMENSIONS IN: IN (MM) (REF)	SCALE - NTS -	DRAFTER J.PRY-SOCK	DATE 8/11/20	
<small>PROPRIETARY</small> This document is the property of Mitsubishi Electric Power Products, Inc. and contains proprietary and confidential information which must not be duplicated, used or disclosed other than as expressly authorized by Mitsubishi Electric Power Products, Inc.		APPROVED R.DURBIN	DATE 8/11/20	
CORE/REFERENCE DRAWING (IF APPLICABLE)			TITLE MAINTENANCE BYPASS;600A;30IN	DWG. NO. UD-101230
			SHEET 1 OF 1	REV. 7