

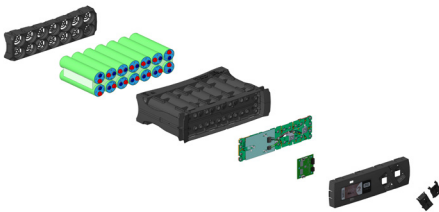
# BCLO6 LiB CABINET DATA SHEET



## BATTERY MANAGEMENT MODULE



## BATTERY MODULE



## FEATURES & BENEFITS

- 1** SUPERIOR SAFETY  
life and enhanced dependability
- 2** LOW ENVIRONMENTAL FOOTPRINT  
minimal cobalt present (<1% cell weight)
- 3** WARRANTY  
5 year warranty
- 4** CONSERVES ELECTRICITY & WATER  
operates at 95°F (35°C)
- 5** CABINET SHIPS FULLY POPULATED  
saves on installation costs

## ABOUT US

Based in Pittsburgh, PA, the Critical Power Solutions Division (CPSD) is a business unit of [Mitsubishi Electric Power Products, Inc. \(MEPPI\)](#). Mitsubishi Electric has been manufacturing precision engineered highly reliable uninterruptible power supplies since 1964 and introduced a line of cooling systems in 2021. CPSD's operations include Project Application Engineering, Design Engineering, Service & Support, Manufacturing & Warehousing, Quality, Sales and Marketing.

## MANUFACTURER DATA

Manufacturer	Soft
Product Series	Flex'ion Gen2 Li-Ion Battery System

## BATTERY DATA

Battery Type	Super Lithium Iron Phosphate (SLFP)
Module type	46 PFe-G2
Number of Modules	11
Nominal Voltage	506 V
Capacity	28 Ah
Energy	14.2 kWh
Design Life	20 years
Max Discharge Power (kW)	180 for 3.5 min
Max No. Paralleled Strings	18 per system

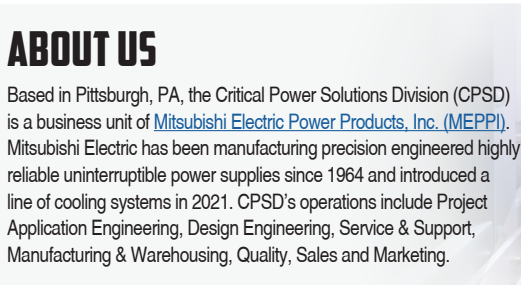
## OPERATION

Operating Voltage	385 to 585 VDC
Operating Temperature	32°F to 95°F (0°C to 35°C)
Storage Temperature	68°F to 104°F (20°C to 40°C)
Cycle Life @ 100% depth-of-discharge	>1000
Communications	MODbus, CANopen, Ethernet
Certifications	UL 1973, UL9540A

## GENERAL

Weight	875 lb (fully populated)
Dimensions (WxDxH)	24"W x 21"D x 84"H
Cable Entry Point	Top or bottom cabinet access
Display	7" HMI touchscreen

## APPLICABLE UPSs from MITSUBISHI ELECTRIC



## OUR SERVICES

Mitsubishi Electric's highly reliable and efficient products are backed by a full range of Field and Factory Services:

-  Factory Testing & Startup
-  24/7 Customer Support
-  Maintenance & Repairs
-  Batteries & Battery Services