


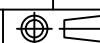
MITSUBISHI 9900B 500kVA UPS DIRECT CABLE CONFIGURATION

CUSTOMER -
PROJECT NUMBER -
PROJECT LOCATION -

TABLE OF CONTENTS

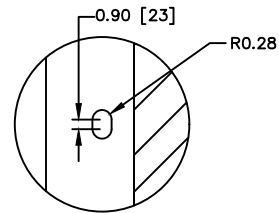
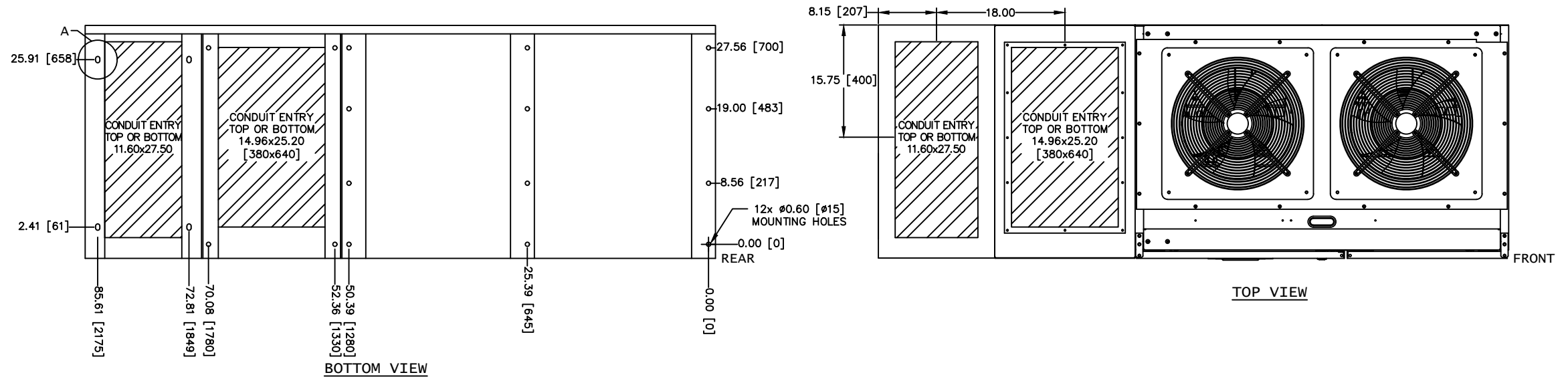
SHEET NO.	TITLE
01	COVER SHEET
02	UPS & SIDECAR DIRECT CABLE CONFIGURATION
03	500kVA UPS DETAIL
04	UPS ONE-LINE DIAGRAM
05	UPS ELECTRICAL SCHEMATIC
06	UPS CONTACT DIAGRAM
07	
08	
09	
10	
11	
12	
13	
14	
15	

REVISIONS
0 RELEASED FOR USE NRR 6/13/11
1 REVISED CONDUIT ENTRY RJM 7/13/12
2 REVISED BATTERY GROUND JUL 11/15/13
3 ADDED COG FOR UPS AND SIDECARS EGE 12/31/13
4 REVISED MOUNTING HOLES RAL 5/7/14
5 REVISED TEXT ON SHEET 6 OF 6 GDU 2/19/15
6. ADDED NOTE 7 TO SHEET 2; UPDATED PER ECN 1369 ZZAJAC 6/27/19
7. CHANGED HEIGHT FOR NEW FAN ZZAJAC 6/27/22

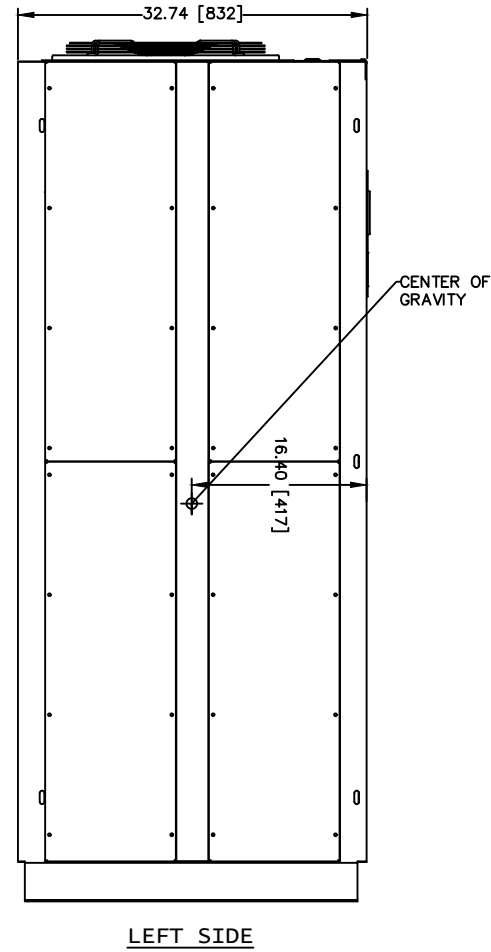
DIM. IN: INCHES	SCALE: NTS	DRAFTER: J.LIEBERT	DATE: 11/15/13	 MITSUBISHI ELECTRIC POWER PRODUCTS, INC. WARRENDALE, PA.
PROPRIETARY THIS DOCUMENT IS PROPERTY OF MITSUBISHI ELECTRIC POWER PRODUCTS INC. AND CONTAINS PROPRIETARY AND CONFIDENTIAL INFORMATION WHICH MUST NOT BE DUPLICATED, USED OR DISCLOSED OTHER THAN AS EXPRESSLY AUTHORIZED BY MITSUBISHI ELECTRIC POWER PRODUCTS INC.		CHECKED: N.RIEMER	DATE: 11/15/13	
		ENGINEER: N.RIEMER	DATE: 11/15/13	
REF. DWG. No.	APPROVED:	DATE:	TITLE: 9900B 500kVA UPS STANDARD CONFIGURATION	
FILE LOCATION:			DWG No. UD-100114 SHEET 1 OF 6 REV: 7	

NOTES

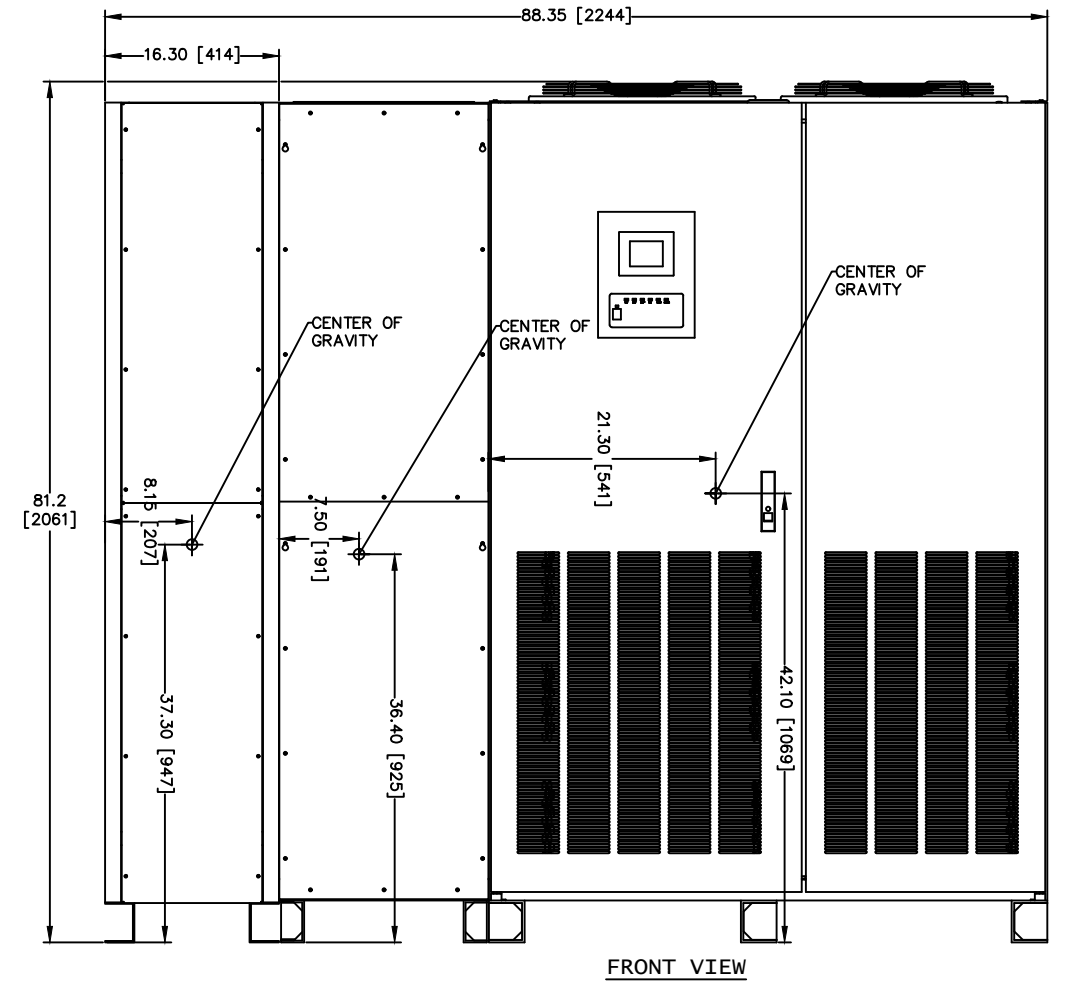
1. FIELD CABLES AND TERMINATIONS BY OTHERS. (AC INPUT, DC INPUT, BYPASS INPUT AND AC OUTPUT.)
2. PHASE ROTATION CLOCKWISE A, B, C.
3. 19.7" SIDECAR SHIPPED ATTACHED TO UPS.
4. 16.3" SIDECAR SHIPPED SEPARATE
5. CABINET MUST MAINTAIN ±15° UPRIGHT.
6. APPROXIMATE WEIGHT: 3,570LBS (1701KG)
7. HEAT REJECTION
 69.28 KBTU/HR @ 100%
 49.20 KBTU/HR @ 75%
 32.80 KBTU/HR @ 50%



DETAIL A
16.3" SIDECAR ANCHORING (TYP 4)



LEFT SIDE



FRONT VIEW

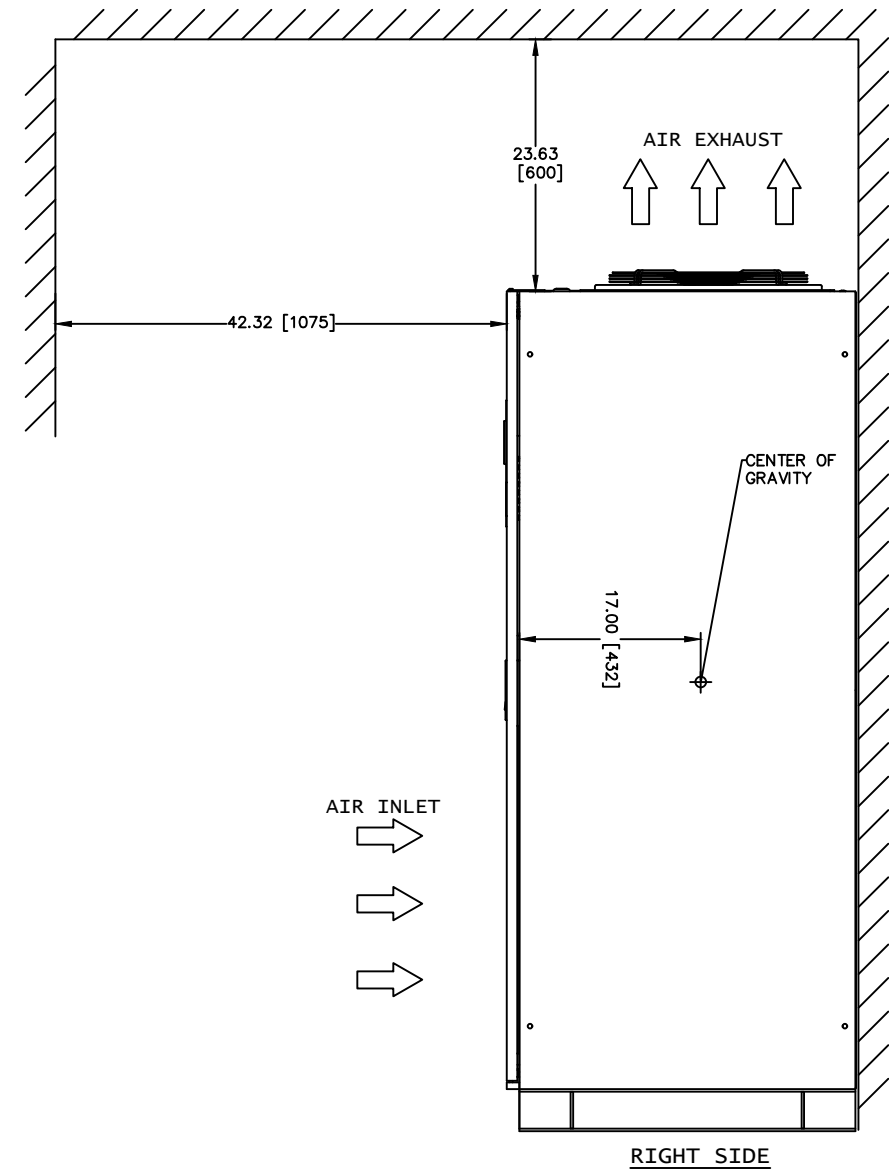
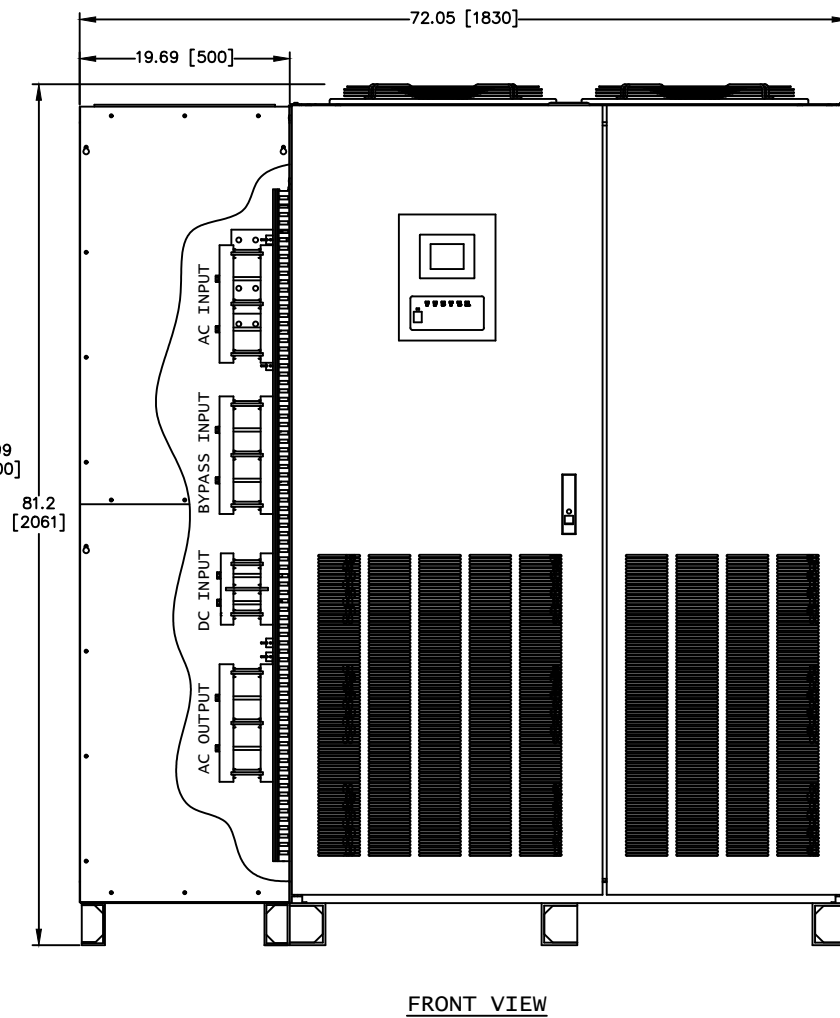
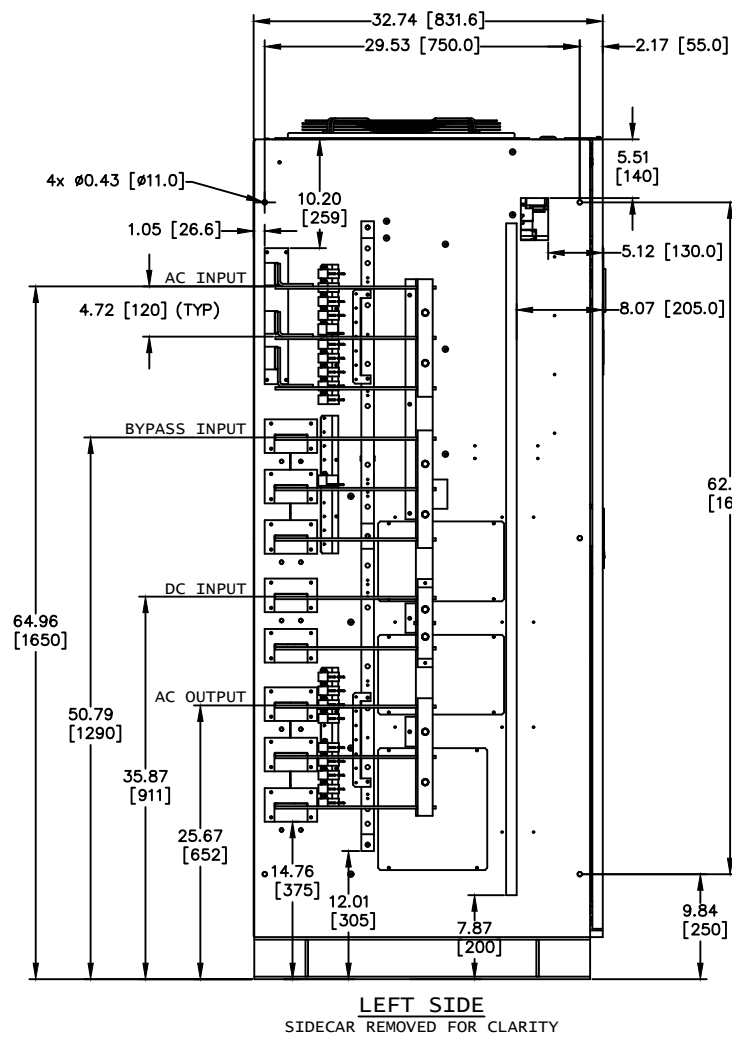
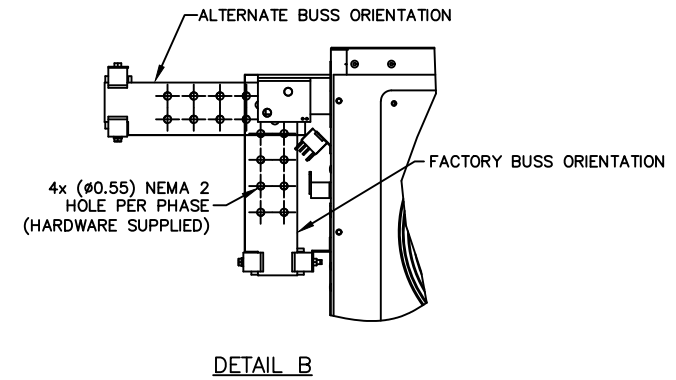
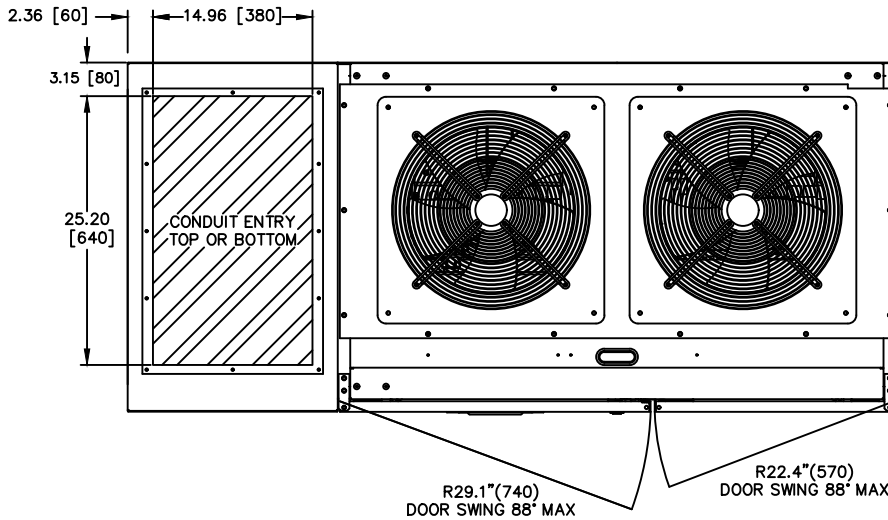
REVISIONS
0 RELEASED FOR USE NRR 6/13/11
1 REVISED CONDUIT ENTRY RJM 7/13/12
2 REVISED BATTERY GROUND JUL 11/15/13
3 ADDED COG FOR UPS AND SIDECARS EGF 12/31/13
4 REVISED MOUNTING HOLES RAL 5/7/14
5 REVISED TEXT ON SHEET 6 OF 6 GDJ 2/19/15
6 ADDED NOTE 7 TO SHEET 2, UPDATED PER EGN 1369 ZZAJAC 6/27/19
7 CHANGED HEIGHT FOR NEW FAN ZZAJAC 6/27/22

DIM. IN: INCHES	SCALE: NTS	DRAFTER: T.DIEBLE	DATE: 06/03/11
<small>PROPRIETARY THIS DOCUMENT IS PROPERTY OF MITSUBISHI ELECTRIC POWER PRODUCTS INC. AND CONTAINS PROPRIETARY AND CONFIDENTIAL INFORMATION WHICH MUST NOT BE DUPLICATED, USED OR DISCLOSED OTHER THAN AS EXPRESSLY AUTHORIZED BY MITSUBISHI ELECTRIC POWER PRODUCTS INC.</small>		CHECKED: N.RIEMER	DATE: 06/03/11
		ENGINEER: N.RIEMER	DATE: 06/03/11
		APPROVED:	DATE:
REF. DWG. No.	FILE LOCATION:		

MITSUBISHI ELECTRIC POWER PRODUCTS, INC.
 WARRENDALE, PA.
 TITLE: **9900B 500kVA UPS STANDARD CONFIGURATION**
 DWG No. **UD-100114** SHEET 2 OF 6 REV: **7**

NOTES

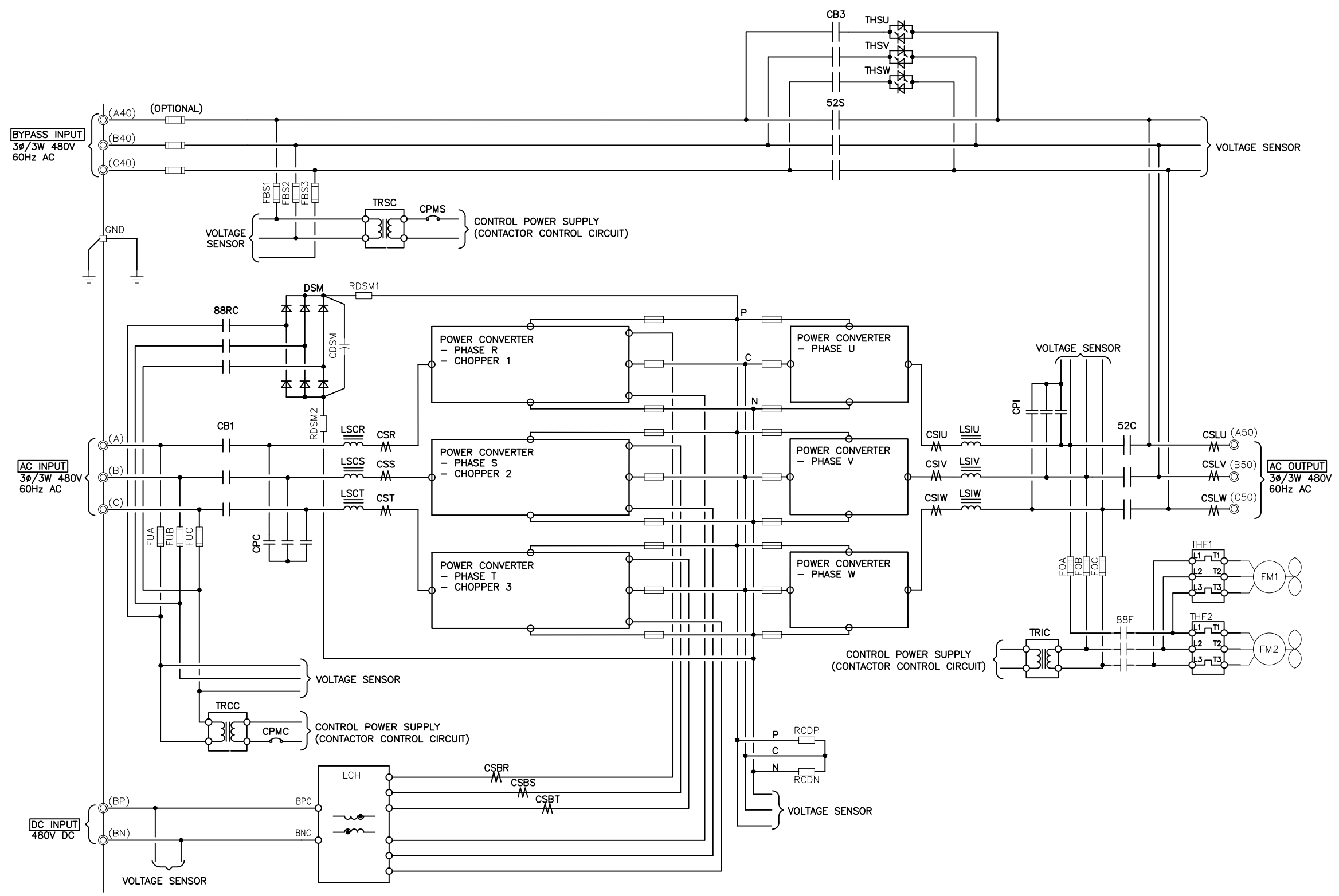
1. FIELD CABLES AND TERMINATIONS BY OTHERS.
(AC INPUT, DC INPUT, BYPASS INPUT AND AC OUTPUT.)
2. PHASE ROTATION CLOCKWISE A, B, C.
3. 19.7" SIDECAR SHIPPED ATTACHED TO UPS.
4. CABINET MUST MAINTAIN ±15° UPRIGHT.
5. APPROXIMATE WEIGHT: 3,300LBS (1497KG)
6. HEAT REJECTION
69.28 KBTU/HR@ 100%
49.20 KBTU/HR@ 75%
32.80 KBTU/HR@ 50%



REVISIONS
0 RELEASED FOR USE NRR 6/13/11
1 REVISED CONDUIT ENTRY RJM 7/13/12
2 REVISED BATTERY GROUND JUL 11/15/13
3 ADDED COG FOR UPS AND SIDECARS EGE 12/31/13
4 REVISED MOUNTING HOLES RAL 5/7/14
5 REVISED TEXT ON SHEET 6 OF 6 GDU 2/19/15
6. ADDED NOTE 7 TO SHEET 2; UPDATED PER ECN 1369 ZZAJAC 6/27/19
7. CHANGED HEIGHT FOR NEW FAN ZZAJAC 6/27/22

DIM. IN: INCHES	SCALE: NTS	DRAFTER: T.DIEBLE	DATE: 06/03/11
<small>PROPRIETARY THIS DOCUMENT IS PROPERTY OF MITSUBISHI ELECTRIC POWER PRODUCTS INC. AND CONTAINS PROPRIETARY AND CONFIDENTIAL INFORMATION WHICH MUST NOT BE DUPLICATED, USED OR DISCLOSED OTHER THAN AS EXPRESSLY AUTHORIZED BY MITSUBISHI ELECTRIC POWER PRODUCTS INC.</small>		CHECKED: N.RIEMER	DATE: 06/03/11
		ENGINEER: N.RIEMER	DATE: 06/03/11
		APPROVED:	DATE:
REF. DWG. No.	FILE LOCATION:		

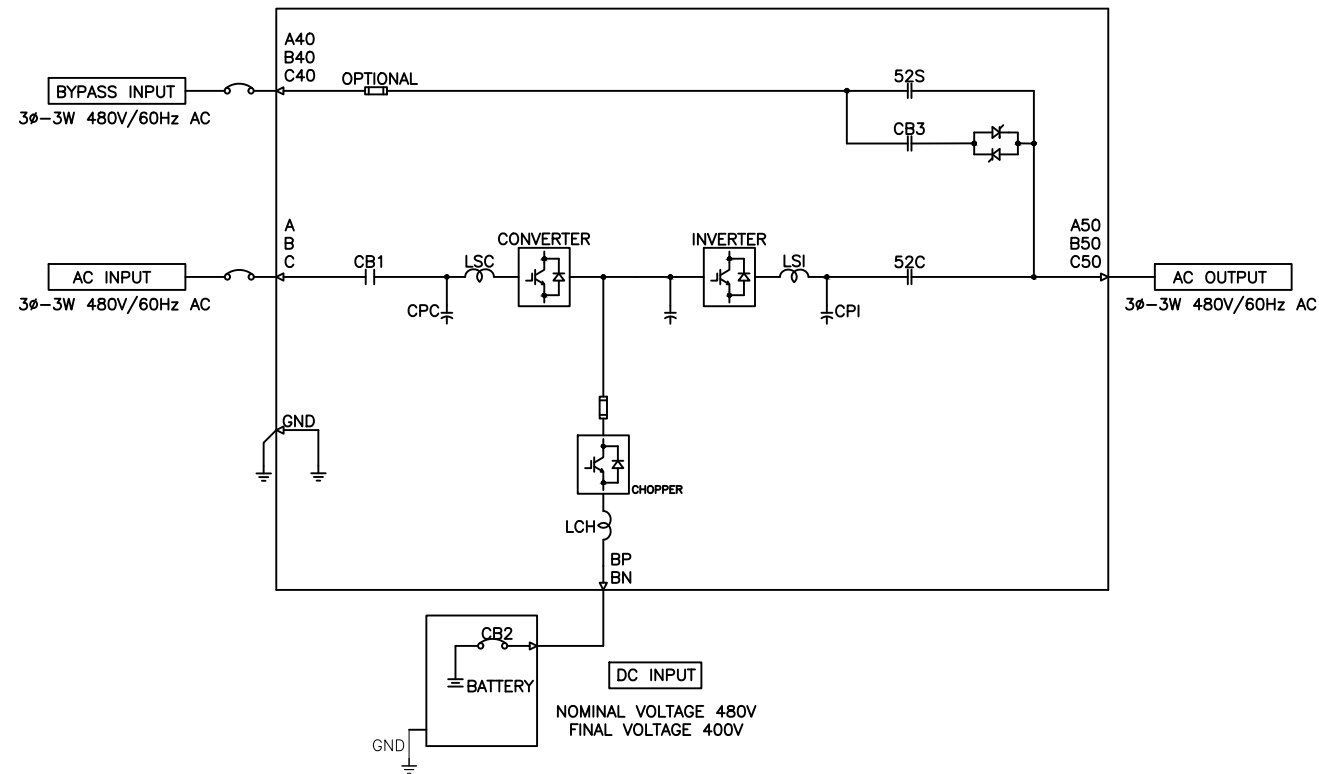
**MITSUBISHI ELECTRIC
POWER PRODUCTS, INC.**
 WARRENDALE, PA.
 TITLE: **9900B 500kVA UPS
STANDARD CONFIGURATION**
 DWG No. UD-100114 SHEET 3 OF 6 REV: **7**



REVISIONS
0 RELEASED FOR USE NRR 6/13/11
1 REVISED CONDUIT ENTRY RJM 7/13/12
2 REVISED BATTERY GROUND JUL 11/15/13
3 ADDED COG FOR UPS AND SIDEGARS EGE 12/31/13
4 REVISED MOUNTING HOLES RAL 5/7/14
5 REVISED TEXT ON SHEET 6 OF 6 GDJ 2/19/15
6. ADDED NOTE 7 TO SHEET 2. UPDATED PER ECN 1369 ZZAJAC 6/27/19
7. CHANGED HEIGHT FOR NEW FAN ZZAJAC 6/27/22

DIM. IN: INCHES	SCALE: NTS	DRAFTER: T.DIEBLE	DATE: 06/03/11
<small>PROPRIETARY THIS DOCUMENT IS PROPERTY OF MITSUBISHI ELECTRIC POWER PRODUCTS INC. AND CONTAINS PROPRIETARY AND CONFIDENTIAL INFORMATION WHICH MUST NOT BE DUPLICATED, USED OR DISCLOSED OTHER THAN AS EXPRESSLY AUTHORIZED BY MITSUBISHI ELECTRIC POWER PRODUCTS INC.</small>		CHECKED: N.RIEMER	DATE: 06/03/11
		ENGINEER: N.RIEMER	DATE: 06/03/11
		APPROVED:	DATE:
REF. DWG. No.	FILE LOCATION:		

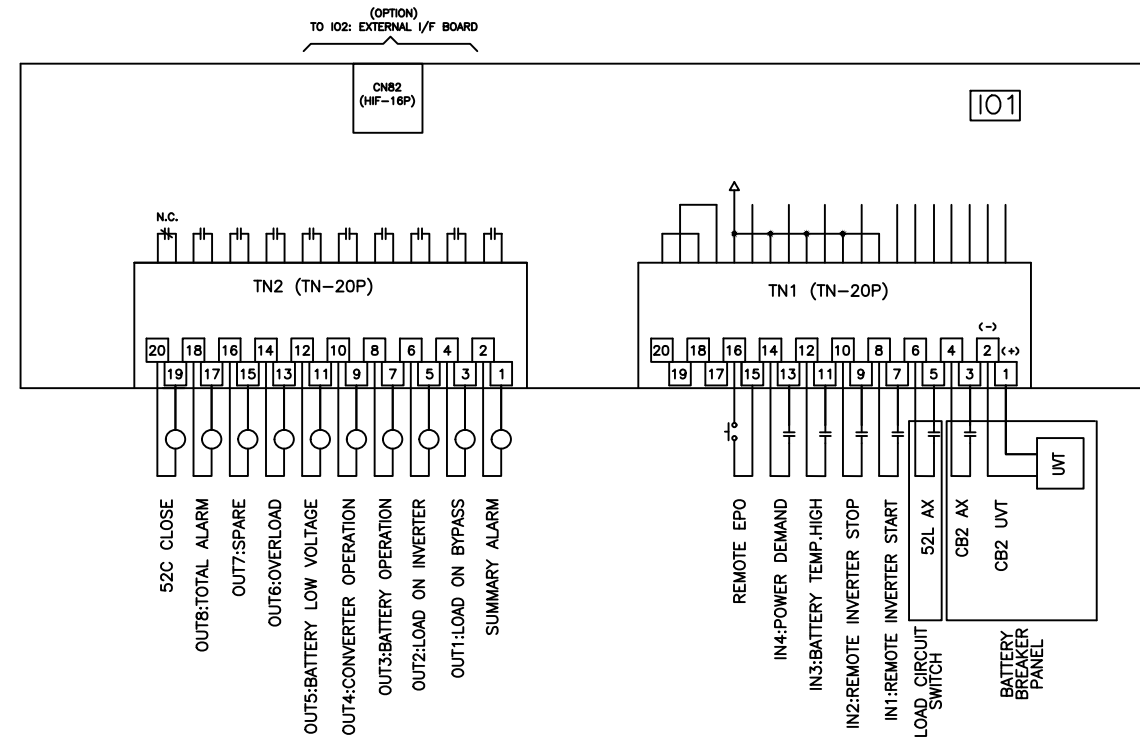
MITSUBISHI ELECTRIC POWER PRODUCTS, INC.
 WARRENDALE, PA.
 TITLE: **9900B 500kVA UPS STANDARD CONFIGURATION**
 DWG No. UD-100114 SHEET 4 OF 6 REV: **7**



500kVA 500kW UPS MODULE

REVISIONS
0 RELEASED FOR USE NRR 6/13/11
1 REVISED CONDUIT ENTRY RJM 7/13/12
2 REVISED BATTERY GROUND JUL 11/15/13
3 ADDED COG FOR UPS AND SIDECARS EGF 12/31/13
4 REVISED MOUNTING HOLES RAL 5/7/14
5 REVISED TEXT ON SHEET 6 OF 6 GDU 2/19/15
6. ADDED NOTE 7 TO SHEET 2; UPDATED PER ECN 1369 Z.ZAJAC 6/27/19
7. CHANGED HEIGHT FOR NEW FAN Z.ZAJAC 6/27/22

DIM. IN: INCHES	SCALE: NTS	DRAFTER: T.DIEBLE	DATE: 06/03/11	<p>9900B 500kVA UPS STANDARD CONFIGURATION</p>
<p>PROPRIETARY THIS DOCUMENT IS PROPERTY OF MITSUBISHI ELECTRIC POWER PRODUCTS INC. AND CONTAINS PROPRIETARY AND CONFIDENTIAL INFORMATION WHICH MUST NOT BE DUPLICATED, USED OR DISCLOSED OTHER THAN AS EXPRESSLY AUTHORIZED BY MITSUBISHI ELECTRIC POWER PRODUCTS INC.</p>		CHECKED: N.RIEMER	DATE: 06/03/11	
		ENGINEER: N.RIEMER	DATE: 06/03/11	
REF. DWG. No.	APPROVED:	DATE:	DATE:	
FILE LOCATION:			<p>DWG No. UD-100114 SHEET 5 OF 6</p>	<p>REV: 7</p>



UPS CONNECTION DIAGRAM

REVISIONS
0 RELEASED FOR USE NRR 6/13/11
1 REVISED CONDUIT ENTRY RJM 7/13/12
2 REVISED BATTERY GROUND JUL 11/15/13
3 ADDED COG FOR UPS AND SIDEGAS EGF 12/31/13
4 REVISED MOUNTING HOLES RAL 5/7/14
5 REVISED TEXT ON SHEET 6 OF 6 GDU 2/19/15
6. ADDED NOTE 7 TO SHEET 2: UPDATED PER ECN 1569 ZZAJAC 6/27/19
7. CHANGED HEIGHT FOR NEW FAN ZZAJAC 6/27/22

DIM. IN: INCHES	SCALE: NTS	DRAFTER: T.DIEBLE	DATE: 06/03/11
PROPRIETARY THIS DOCUMENT IS PROPERTY OF MITSUBISHI ELECTRIC POWER PRODUCTS INC. AND CONTAINS PROPRIETARY AND CONFIDENTIAL INFORMATION WHICH MUST NOT BE DUPLICATED, USED OR DISCLOSED OTHER THAN AS EXPRESSLY AUTHORIZED BY MITSUBISHI ELECTRIC POWER PRODUCTS INC.		CHECKED: N.RIEMER	DATE: 06/03/11
		ENGINEER: N.RIEMER	DATE: 06/03/11
		APPROVED:	DATE:
REF. DWG. No.	TITLE: 9900B 500kVA UPS STANDARD CONFIGURATION		
FILE LOCATION:	DWG No. UD-100114		SHEET 6 OF 6 REV: 7