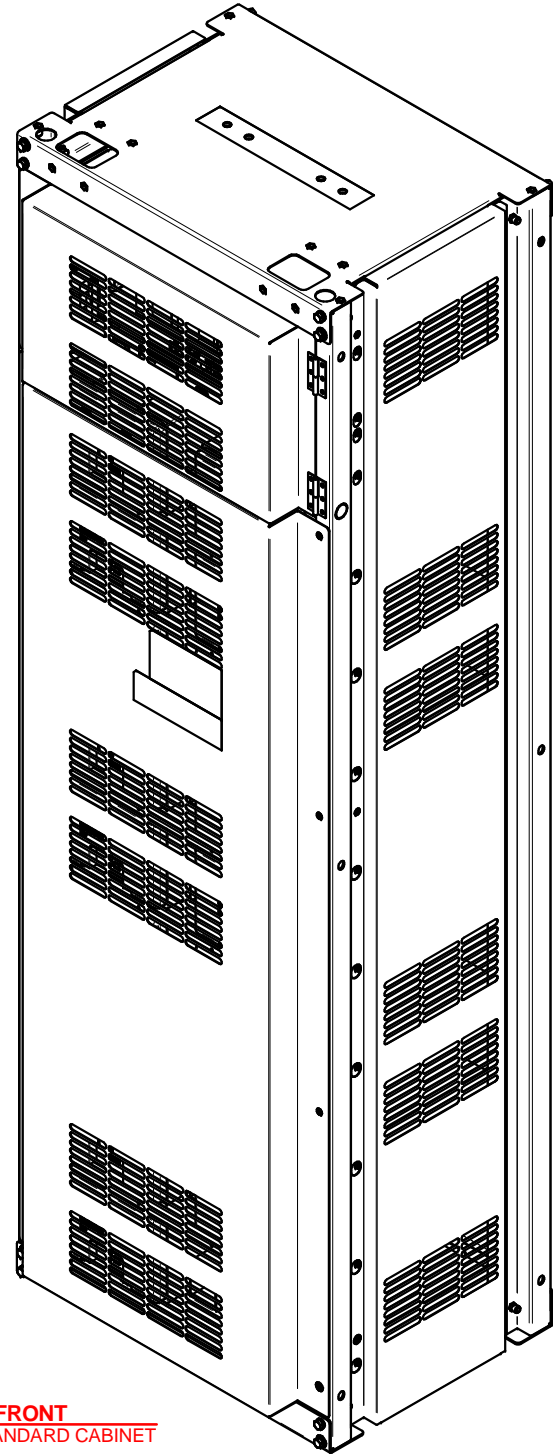
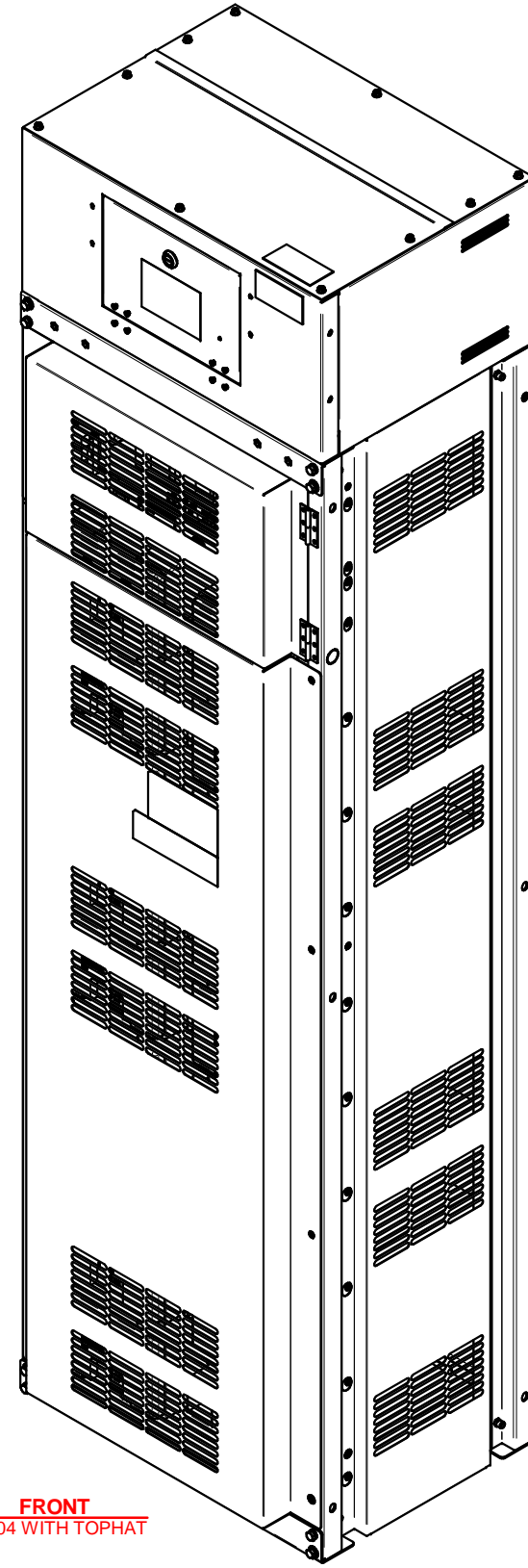


**FRONT**  
BCL04 STANDARD CABINET


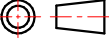


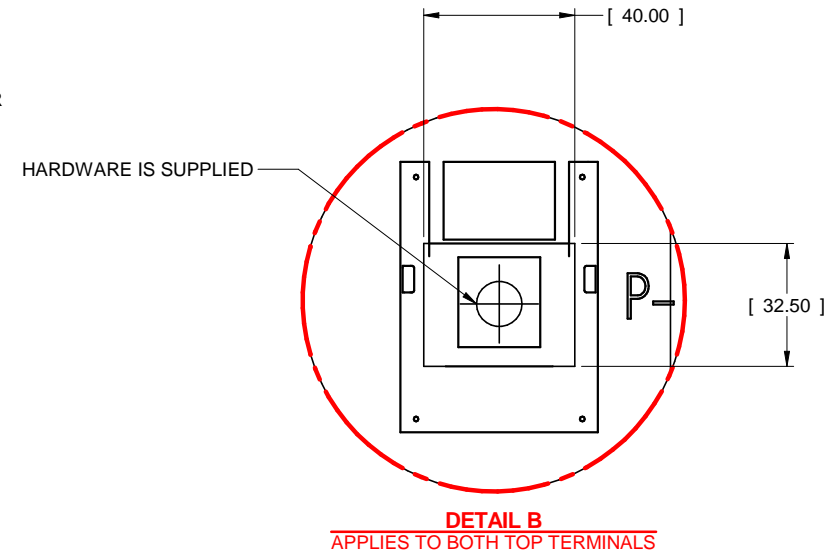
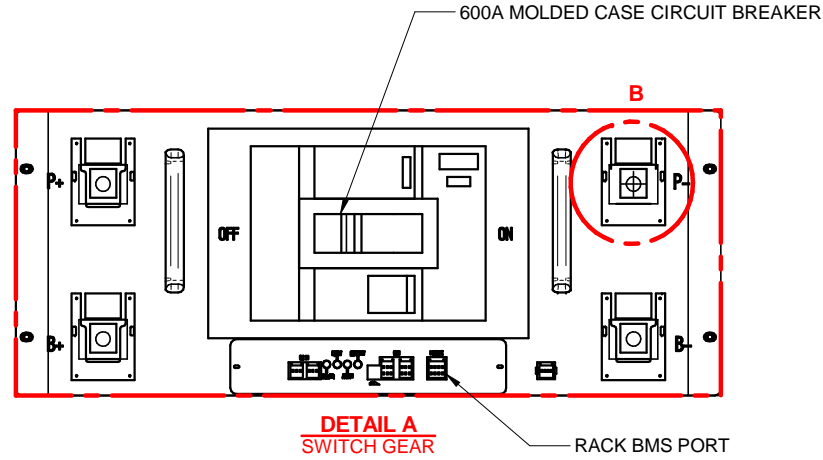
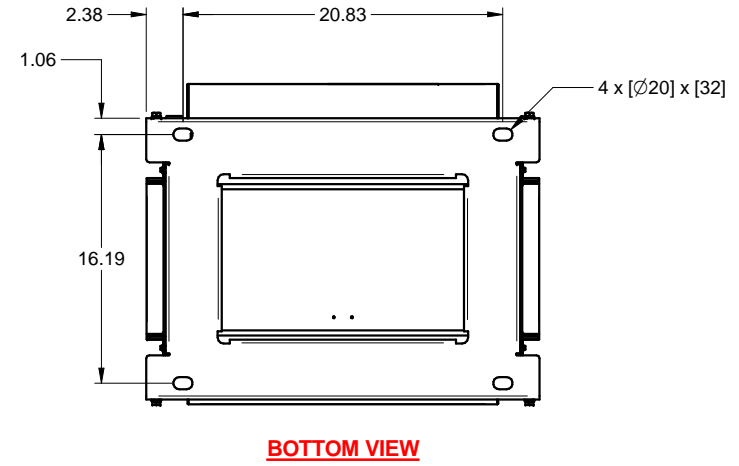
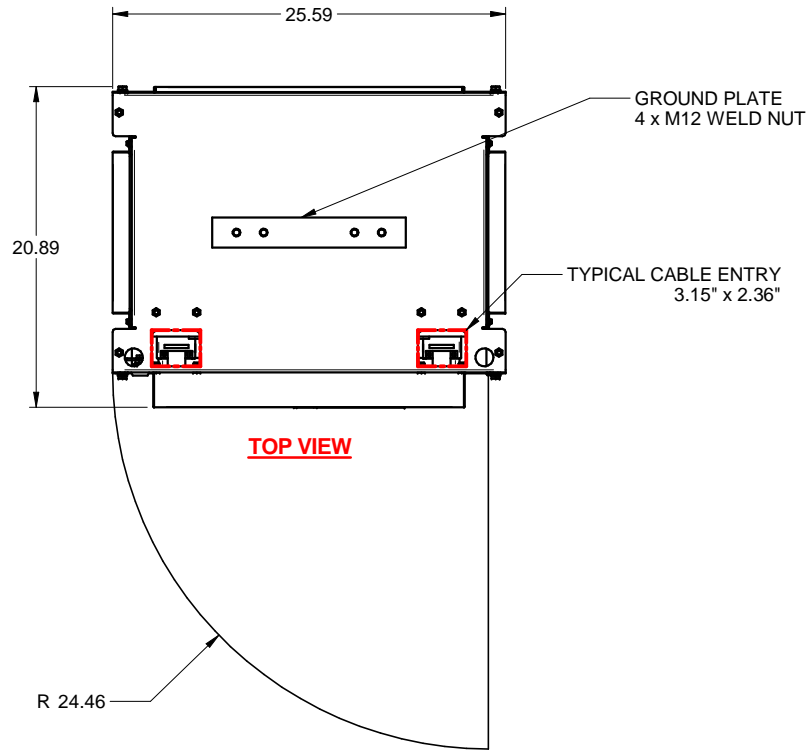
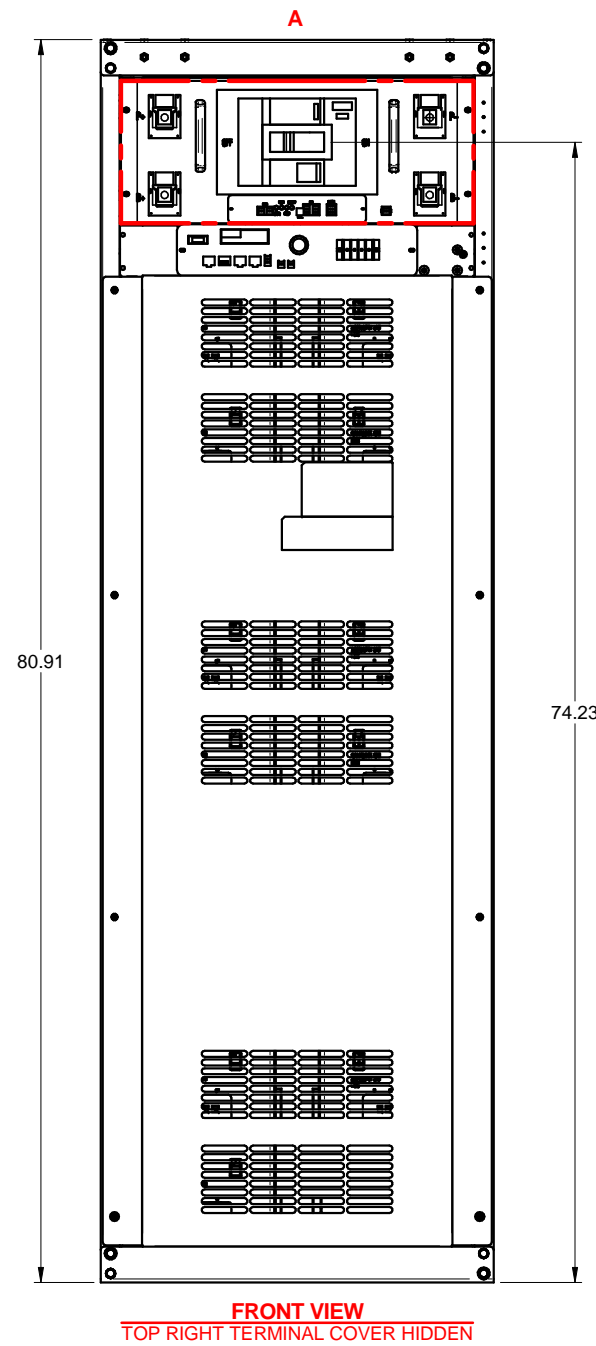
**FRONT**  
BCL04 WITH TOPHAT



**BCL04 LITHIUM BATTERY CABINET OPTIONS**

REVISIONS	DESCRIPTION	DATE
0.	INITIAL RELEASE ECN 1256 E.MACDONALD 05/01/2019	
1.	CHANGED CABINET TYPE: UPDATED PER ECN 1396 Z.ZAJAC 7/17/2019	
2.	CHANGED TITLE AND LABELING TO BCL04; UPDATED PER ECN 1511 Z.ZAJAC 9/25/19	
4.	ADDED VIEWS AND NOTE 4 & 5 TO SHEET 1 Z.ZAJAC 1/23/2020	
5.	UPDATED VEIWS, ADDED OVERALLS. J.PRY-SOCK 2/11/2020	
6.	ADDED CONDUIT ENTRY FOR STANDARD CABINET Z.ZAJAC 4/14/2020	
7.	ADDED EXTRA SHEETS TO SHOW BCL04 OPTIONS Z.ZAJAC 4/16/2020	
8.	UPDATED VIEWS TO SHOW I/O CONTROL BOX TO BE ROTATED 90° Z.ZAJAC 9/4/20	
9.	UPDATED DRAWING TO SHOW NEW TOPHAT DESIGN Z.ZAJAC 10/22/20	
10.	ADDED DIMENSION TO BREAKER Z.ZAJAC 1/6/23	

DIMENSIONS IN: IN [MM] (REF)	SCALE - NTS -	DRAFTER Z.ZAJAC	DATE 10/30/19	 <b>MITSUBISHI ELECTRIC</b>
<p><b>PROPRIETARY</b> This document is the property of Mitsubishi Electric Power Products, Inc. and contains proprietary and confidential information which must not be duplicated, used or disclosed other than as expressly authorized by Mitsubishi Electric Power Products, Inc.</p>		APPROVED A.WINTERS	DATE 10/30/19	
CORE/REFERENCE DRAWING (IF APPLICABLE)				TITLE BCL04 LITHIUM BATTERY CABINET
		DWG. NO. <b>UD-100945</b>	SHEET 1 OF 4	REV. <b>10</b>

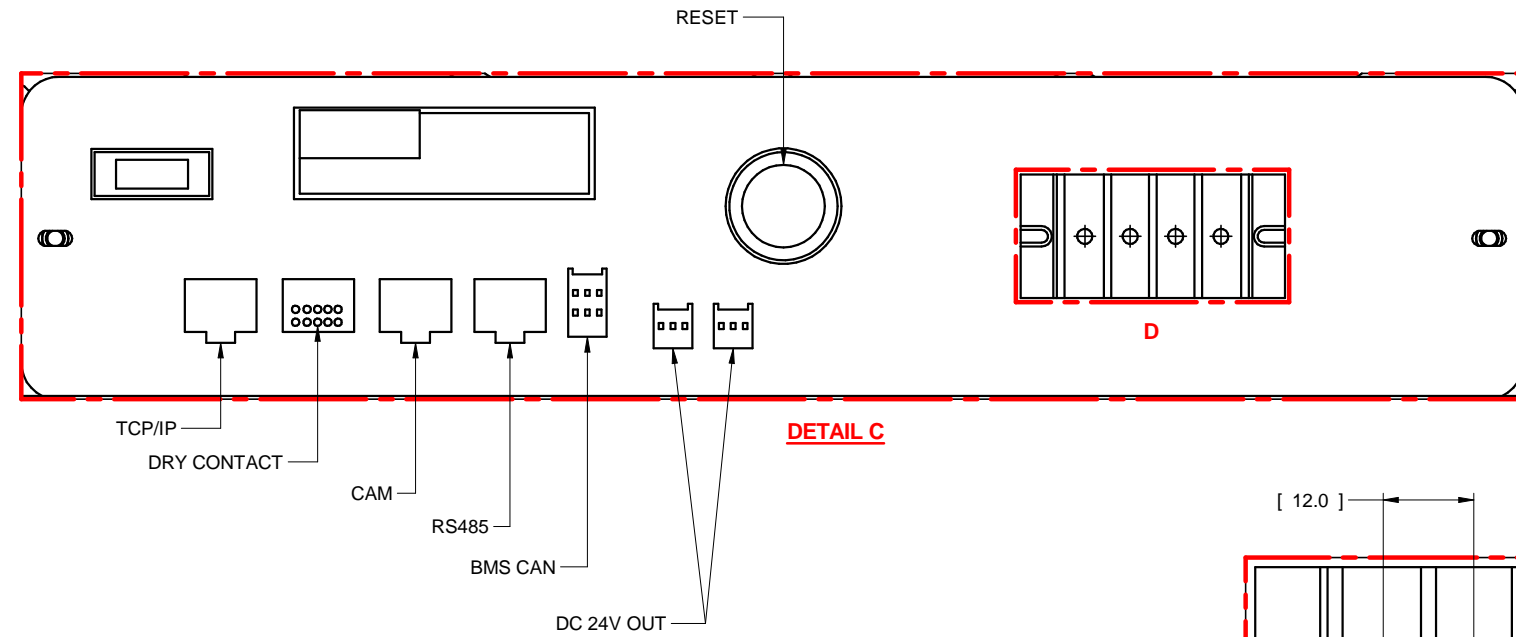


- NOTES:
- 120V CONTROL POWER SUPPLIED AND INSTALLED BY OTHERS.
  - 8 SIGNAL WIRES REQUIRED (6 SIGNAL WIRES FOR 9900C/CX) 22-16 AWG WIRE SIZE. (SUPPLIED AND INSTALLED BY OTHERS)
  - RACK SPECIFICATIONS.  
184KW CONTINUOUS, 257KW MAX POWER  
340-582 VDC OPERATING VOLTAGE RANGE (PROTECTION LIMIT)
  - ALL FOUR CORNERS OF EVERY CABINET SHALL BE ANCHORED TO FLOOR.
  - APPLY "NO-OX" GREASE TO BATTERY TERMINALS.
  - TOP HAT IS A FIELD INSTALLED ITEM.

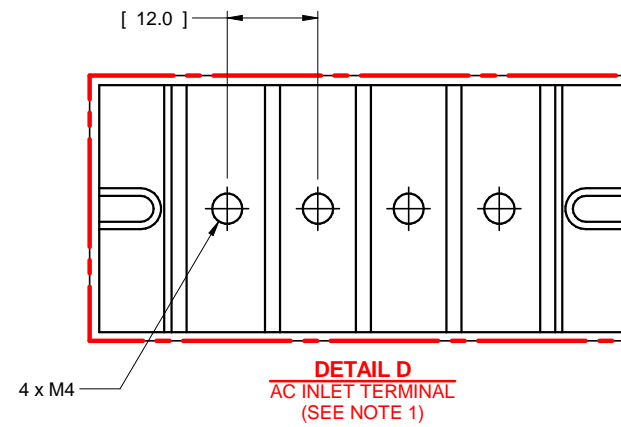
### BCL04 STANDARD CABINET

REVISIONS	DESCRIPTION	DATE
0.	INITIAL RELEASE	
ECN 1256		
E.MACDONALD		
05/01/2019		
1.	CHANGED CABINET TYPE: UPDATED PER ECN 1396	
Z.ZAJAC		
7/17/2019		
2.	CHANGED TITLE AND LABELING TO BCL04; UPDATED PER ECN 1511	
Z.ZAJAC		
9/25/19		
4.	ADDED VIEWS AND NOTE 4 & 5 TO SHEET 1	
Z.ZAJAC		
1/23/2020		
5.	UPDATED VIEWS, ADDED OVERALLS. J.PRY-SOCK	
2/11/2020		
6.	ADDED CONDUIT ENTRY FOR STANDARD CABINET	
Z.ZAJAC		
4/14/2020		
7.	ADDED EXTRA SHEETS TO SHOW BCL04 OPTIONS	
Z.ZAJAC		
4/16/2020		
8.	UPDATED VIEWS TO SHOW I/O CONTROL BOX TO BE ROTATED 90°	
Z.ZAJAC		
9/4/20		
9.	UPDATED DRAWING TO SHOW NEW TOPHAT DESIGN	
Z.ZAJAC		
10/22/20		
10.	ADDED DIMENSION TO BREAKER	
Z.ZAJAC		
1/6/23		

DIMENSIONS IN: IN [MM] (REF)	SCALE - NTS -	DRAFTER Z.ZAJAC	DATE 10/30/19	
<small>PROPRIETARY</small> <small>This document is the property of Mitsubishi Electric Power Products, Inc. and contains proprietary and confidential information which must not be duplicated, used or disclosed other than as expressly authorized by Mitsubishi Electric Power Products, Inc.</small>		APPROVED A.WINTERS	DATE 10/30/19	
CORE/REFERENCE DRAWING (IF APPLICABLE)				TITLE BCL04 LITHIUM BATTERY CABINET
DWG. NO. UD-100945		SHEET 2 OF 4		REV. 10

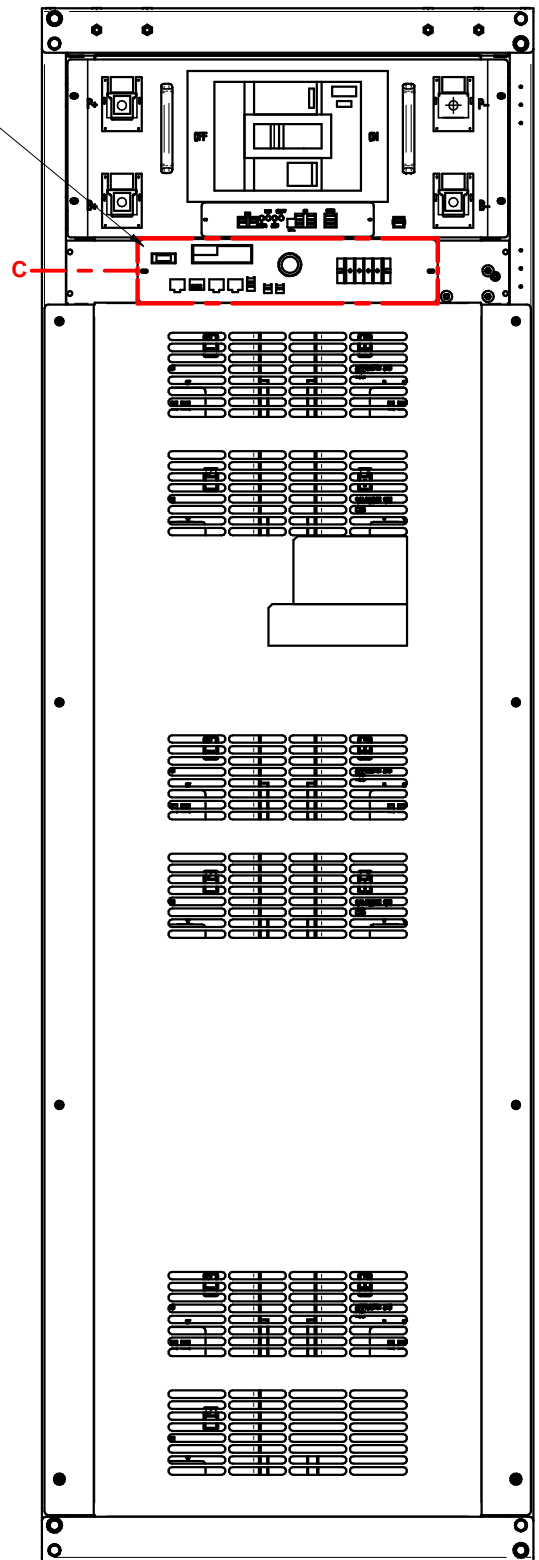


**DETAIL C**

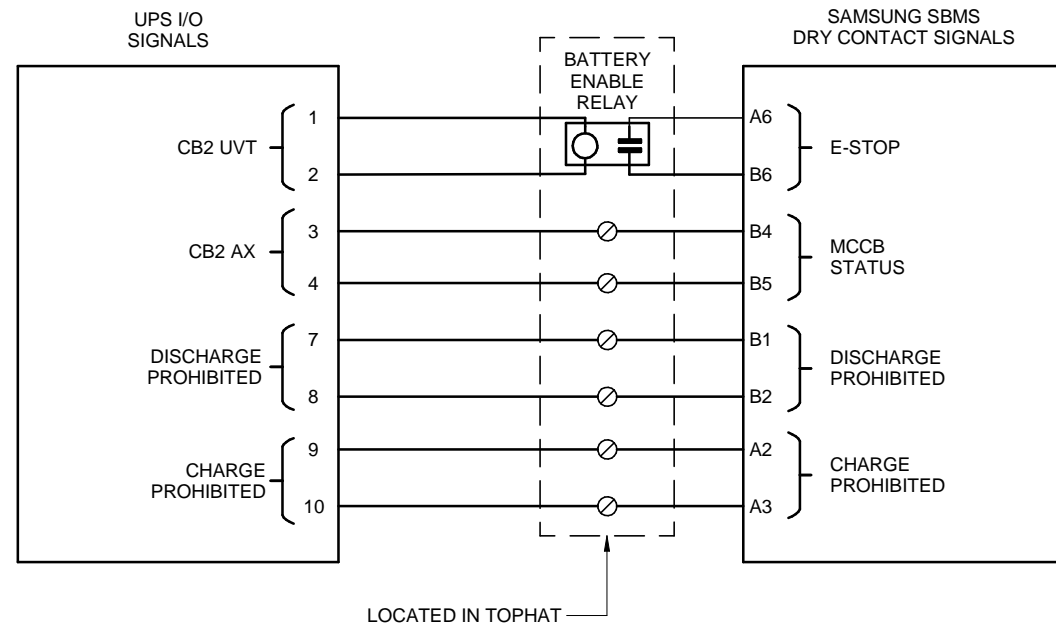


**DETAIL D**  
AC INLET TERMINAL  
(SEE NOTE 1)

SYSTEM BMS



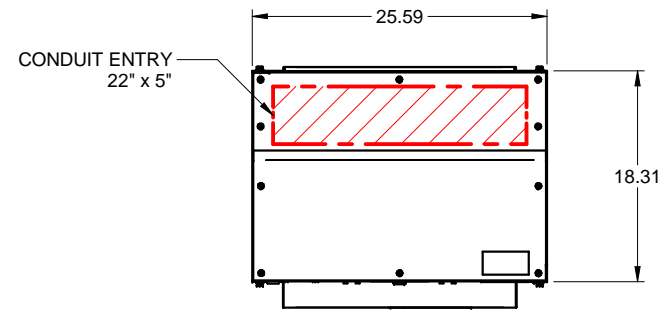
**TYPICAL SIGNAL CONNECTIONS TO UPS**  
SEE NOTE 2



**SYSTEM BMS INTERFACE**

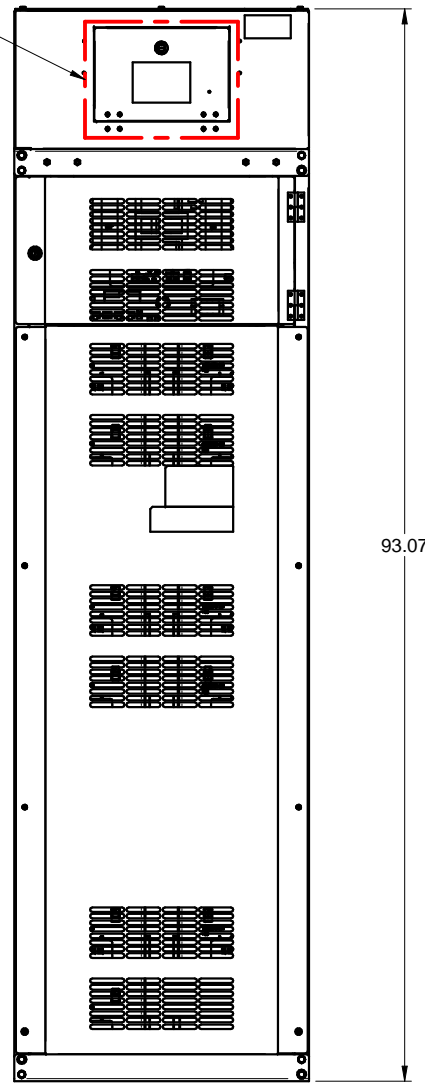
REVISIONS	DIMENSIONS IN:	SCALE	DRAFTER	DATE
0. INITIAL RELEASE ECN 1256 E.MACDONALD 05/01/2019	IN [MM] (REF)	- NTS -	Z.ZAJAC	10/30/19
1. CHANGED CABINET TYPE: UPDATED PER ECN 1396 Z.ZAJAC 7/17/2019	<b>PROPRIETARY</b> This document is the property of Mitsubishi Electric Power Products, Inc. and contains proprietary and confidential information which must not be duplicated, used or disclosed other than as expressly authorized by Mitsubishi Electric Power Products, Inc.		A.WINTERS	10/30/19
2. CHANGED TITLE AND LABELING TO BCL04; UPDATED PER ECN 1511 Z.ZAJAC 9/25/19	CORE/REFERENCE DRAWING (IF APPLICABLE)			
3. ADDED VIEWS, ADDED OVERALLS. J.PRY-SOCK 2/11/2020				
4. ADDED CONDUIT ENTRY FOR STANDARD CABINET Z.ZAJAC 4/14/2020				
5. ADDED EXTRA SHEETS TO SHOW BCL04 OPTIONS Z.ZAJAC 4/16/2020				
6. UPDATED VIEWS TO SHOW I/O CONTROL BOX TO BE ROTATED 90° Z.ZAJAC 9/4/20				
7. UPDATED DRAWING TO SHOW NEW TOPHAT DESIGN Z.ZAJAC 10/22/20				
8. ADDED DIMENSION TO BREAKER Z.ZAJAC 1/6/23				

<b>PROPRIETARY</b> This document is the property of Mitsubishi Electric Power Products, Inc. and contains proprietary and confidential information which must not be duplicated, used or disclosed other than as expressly authorized by Mitsubishi Electric Power Products, Inc.			
TITLE <b>BCL04 LITHIUM BATTERY CABINET</b>		DWG. NO. <b>UD-100945</b>	
SHEET 3 OF 4		REV. <b>10</b>	



**TOP**

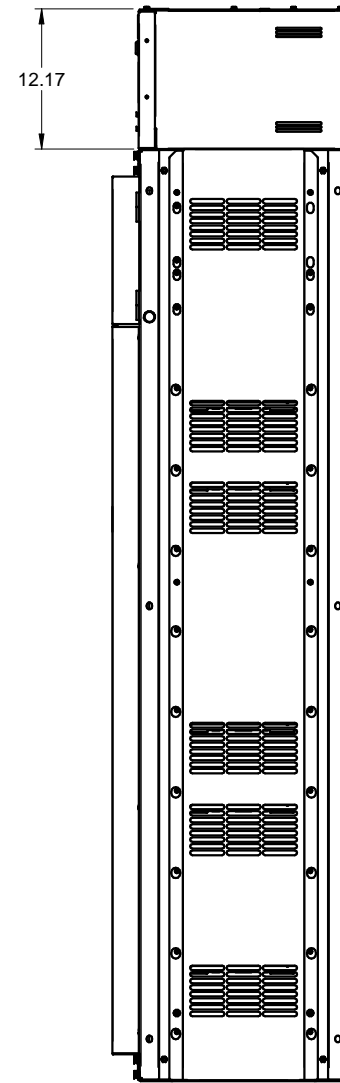
I/O SIGNAL INTERFACE, DATA LOGGER, AND TCP/IP CONNECTION LOCATED HERE



**BCL04 WITH TOPHAT**

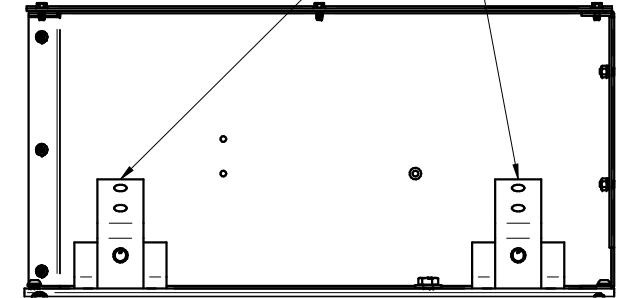
-1 PER RACK

I/O SIGNAL INTERFACE, DATA LOGGER, AND TCP/IP CONNECTION LOCATED IN MASTER RACK (1 PER SYSTEM)  
-UA-100918

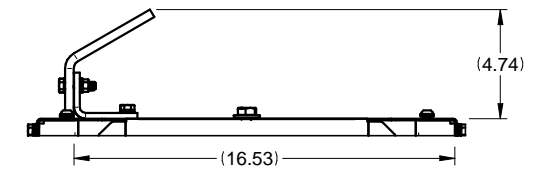


**RIGHT SIDE**

PROVISION FOR (2) NEMA 2 HOLE CONNECTIONS PER POLE



**FRONT VIEW OF TOPHAT**  
FRONT PANEL HIDDEN



**BUSS TABS SIDE ELEVATION**  
TOPHAT HIDDEN

**BCL04 WITH TOPHAT**

REVISIONS	DESCRIPTION	DATE
0.	INITIAL RELEASE ECN 1256 E.MACDONALD 05/01/2019	
1.	CHANGED CABINET TYPE: UPDATED PER ECN 1396 Z.ZAJAC 7/17/2019	
2.	CHANGED TITLE AND LABELING TO BCL04; UPDATED PER ECN 1511 Z.ZAJAC 9/25/19	
4.	ADDED VIEWS AND NOTE 4 & 5 TO SHEET 1 Z.ZAJAC 1/23/2020	
5.	UPDATED VEWS, ADDED OVERALLS. J.PRY-SOCK 2/11/2020	
6.	ADDED CONDUIT ENTRY FOR STANDARD CABINET Z.ZAJAC 4/14/2020	
7.	ADDED EXTRA SHEETS TO SHOW BCL04 OPTIONS Z.ZAJAC 4/16/2020	
8.	UPDATED VIEWS TO SHOW I/O CONTROL BOX TO BE ROTATED 90° Z.ZAJAC 9/4/20	
9.	UPDATED DRAWING TO SHOW NEW TOPHAT DESIGN Z.ZAJAC 10/22/20	
10.	ADDED DIMENSION TO BREAKER Z.ZAJAC 1/6/23	

DIMENSIONS IN: IN [MM] (REF)	SCALE - NTS -	DRAFTER Z.ZAJAC	DATE 10/30/19	<p><b>MITSUBISHI ELECTRIC</b></p>	
<p><b>PROPRIETARY</b> This document is the property of Mitsubishi Electric Power Products, Inc. and contains proprietary and confidential information which must not be duplicated, used or disclosed other than as expressly authorized by Mitsubishi Electric Power Products, Inc.</p>		APPROVED A.WINTERS	DATE 10/30/19		TITLE BCL04 LITHIUM BATTERY CABINET
CORE/REFERENCE DRAWING (IF APPLICABLE)				DWG. NO. <b>UD-100945</b>	SHEET 4 OF 4 REV. <b>10</b>