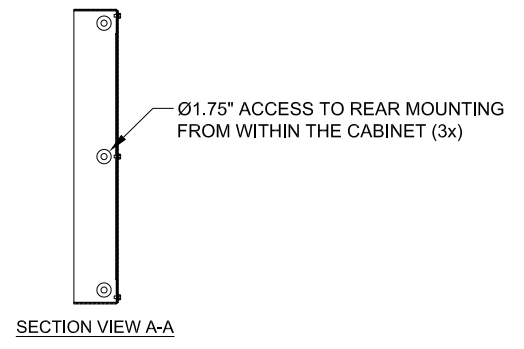
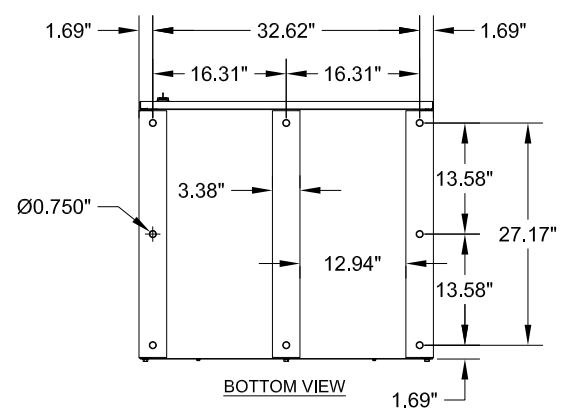
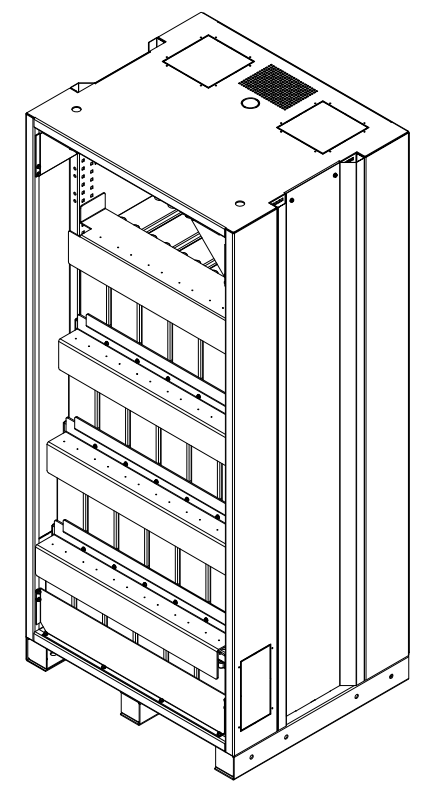
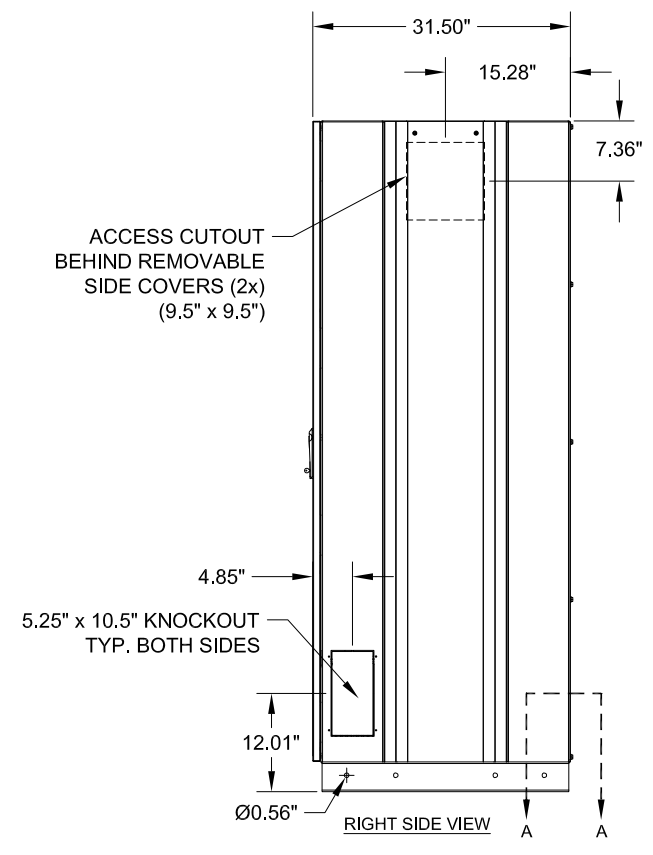
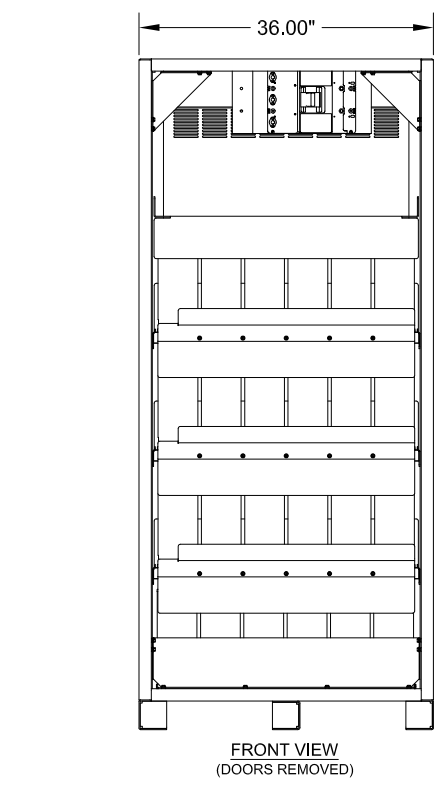
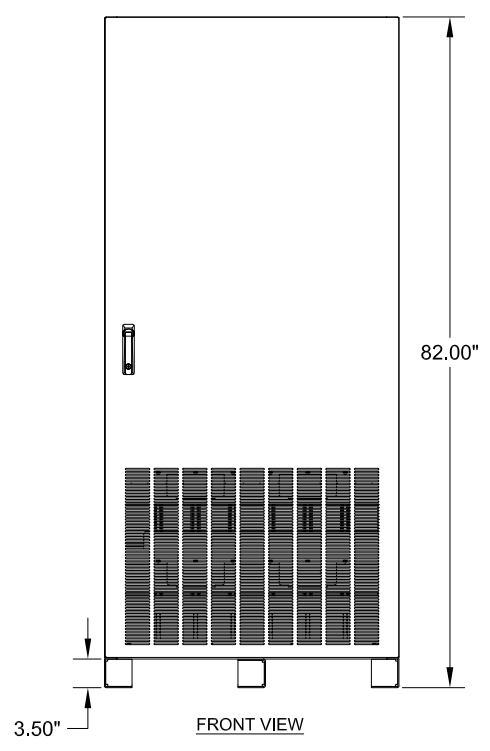
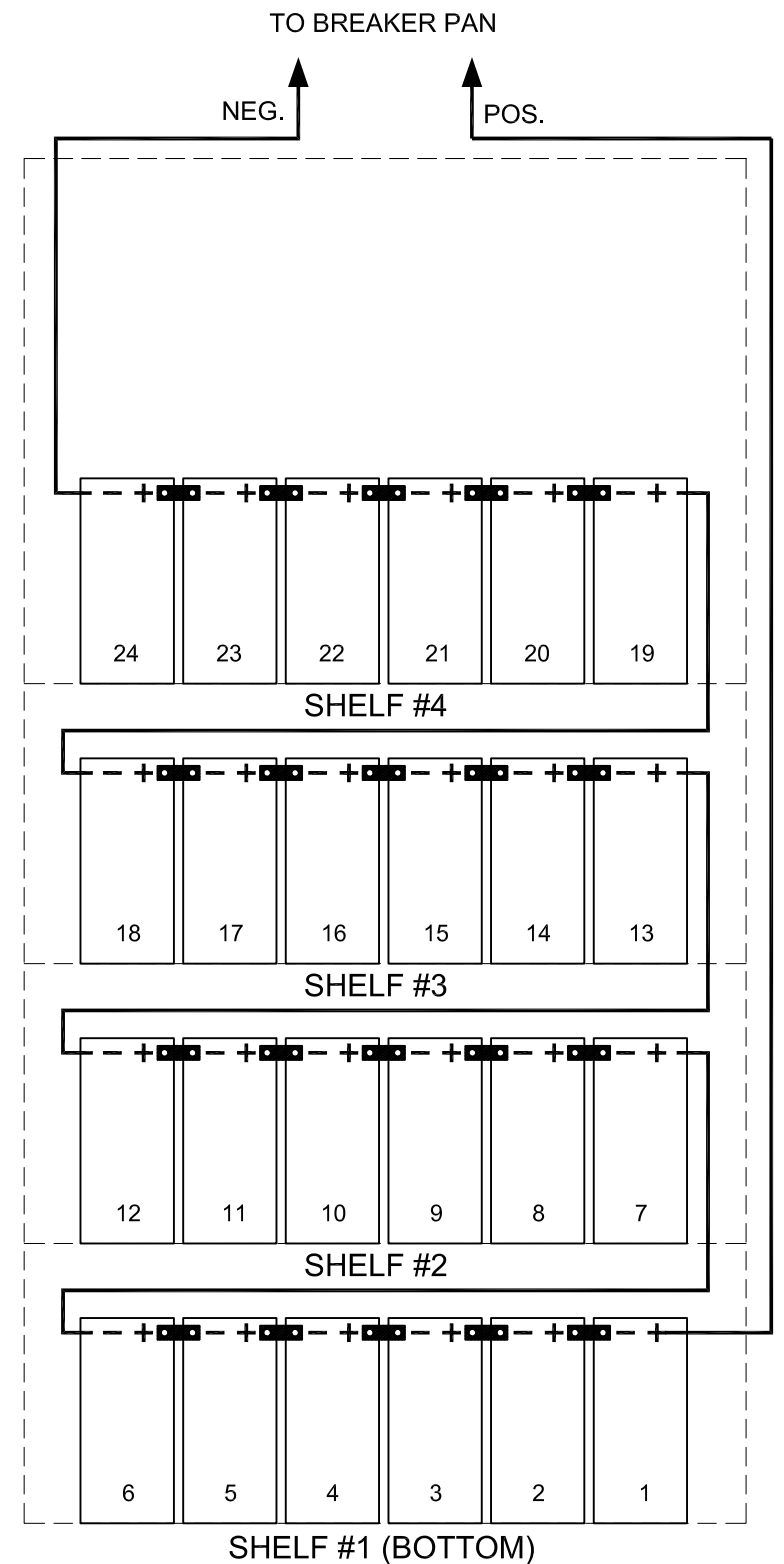
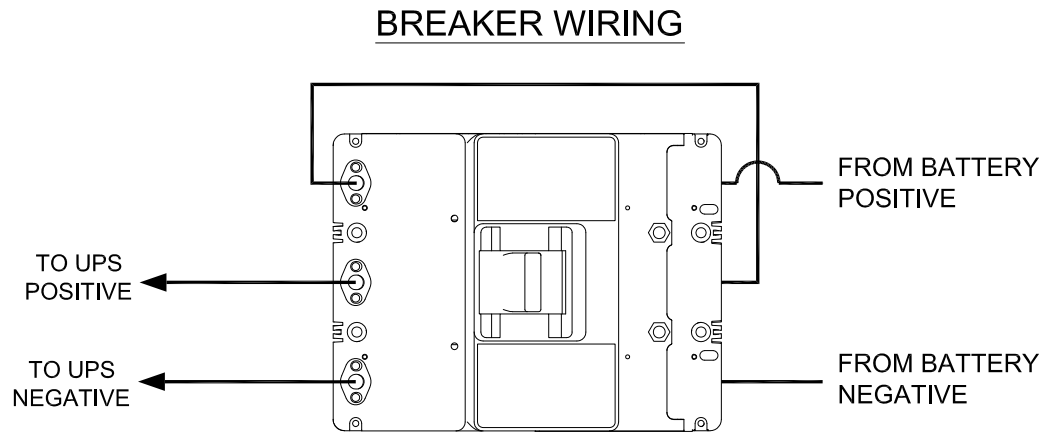


- NOTES:
- EMPTY CABINET WEIGHT WITH SHELVES: 780
  - NEMA 1 ENCLOSED BATTERY CABINET.
  - FACTORY ASSEMBLED CABINETS ARE LISTED TO UL 1778.
  - HEAVY GAUGE WELDED STEEL CONSTRUCTION.
  - AVAILABLE IN MULTIPLE COLORS OF DURABLE CHIP AND CORROSION RESISTANT POWDER COAT FINISH.
  - FOR EASE OF CONDUIT INSTALLATION, A 16 GAUGE CONDUIT KNOCKOUT PLATE IS PROVIDED TO REPLACE A KNOCKOUT IN THE CABINET. (1) 8"x 8" COVER PLATE IS PROVIDED.
  - A MINIMUM REAR CLEARANCE OF 2" IS RECOMMENDED FOR OPTIMAL COOLING OF THE EQUIPMENT.
  - BATTERIES CAN BE ACCESSED FROM THE FRONT OF THE CABINET.
  - CABINET CAN BE MOVED WITH PALLET JACK OR FORK LIFT AT PALLET JACK ACCESS POINTS LOCATED AT FRONT OR REAR OF CABINET. FROM THE SIDES, THE CABINET CAN BE MOVED WITH ROL-A-LIFT TYPE EQUIPMENT MOVER. THE CABINET IS ONLY TO BE LIFTED FROM THE BOTTOM.
  - THE UBC52S BATTERY CABINET (OPTIONAL CONFIGURATION) HAS BEEN CERTIFIED TO MEET THE 2012 EDITION OF THE INTERNATIONAL BUILDING CODE (IBC) AND THE 2013 EDITION OF THE CALIFORNIA BUILDING CODE (CBC) TO MEET DESIGN CATEGORY F, SS = 2.0 AND IMPORTANCE FACTOR 1.5



REVISIONS	REF. DWG. No.	DATE	APPROVED:	DATE	<p>MITSUBISHI ELECTRIC POWER PRODUCTS, INC. WARRENDALE, PA.</p> <p>TITLE: UBC52 BATTERY CABINET UL524 1100A/1100B 200AH BATTERY SOLUTION</p> <p>DWG No. SHEET 1 OF 2</p>
	FILE LOCATION:	DATE	APPROVED:	DATE	
		DATE	APPROVED:	DATE	
		DATE	APPROVED:	DATE	
		DATE	APPROVED:	DATE	
					REV: 1

4  
3  
2  
1



### 288VDC TYPICAL WIRING

**NOTES:**

1. ALL INTERNAL WIRING IS UL LISTED, MTW, STYLE, 105C, EXTRA FLEXIBLE CABLE.
2. BREAKER IS UL LISTED.
3. TERMINAL BLOCK IS UL RECOGNIZED, 600V RATED.
4. BATTERY CABINETS WITH BREAKERS ARE SHIPPED WITH BREAKER IN THE TRIPPED POSITION.
5. BATTERY CABINETS ARE SHIPPED WITH BATTERY JUMPER REMOVED TO BREAK STRING VOLTAGE FOR ADDED SAFETY IN SHIPPING. (11 TO 12) JUMPER MUST BE CONNECTED BY CONTRACTOR DURING INSTALLATION.
6. CABLES FROM BATTERY CABINET TO UPS SYSTEM ARE SUPPLIED BY OTHERS.
7. ALL CONTROL WIRING IS POWERED FROM AN OUTSIDE SOURCE.
8. GROUND CONNECTION IS #6-300MCM MECHANICAL LUG.
9. ALL BREAKER, GROUND LUG, FUSE HOLDER, AND TERMINAL BLOCK CONNECTIONS ARE MECHANICAL LUG TYPE. THESE CONNECTIONS ACCEPT BARE WIRE.
10. BATTERIES ARE EAST PENN / DEKA HR7500ET.
11. FOR BATTERY TORQUE SPEC REFER TO BATTERY LAYOUT DRAWING INSIDE BATTERY CABINET, OR SEE LABEL ON BATTERY CASE.
12. FOR TERMINAL BLOCK TORQUE SPEC REFER TO LABEL ON TERMINAL BLOCK.
13. FOR CIRCUIT BREAKER TORQUE INFORMATION REFER TO LABEL ON BREAKER CASE.
14. USE INSULATED TOOLS.
15. DO NOT ALLOW CABLES OR TOOLS TO REST ON BATTERIES.

REVISIONS

DIM. IN:	INCHES	SCALE:	NTS	DRAFTER:	DATE	 <b>MITSUBISHI ELECTRIC</b> <b>POWER PRODUCTS, INC.</b> WARRENDALE, PA.
<small>THIS DRAWING CONTAINS PROPRIETARY AND CONFIDENTIAL INFORMATION OF C&amp;C POWER, INC. AND HAS BEEN PREPARED FOR THE USE OF MITSUBISHI ELECTRIC POWER PRODUCTS, INC. FOR USE IN CONJUNCTION WITH EQUIPMENT PROVIDED BY C&amp;C POWER, INC. UNAUTHORIZED REPRODUCTION, IN WHOLE OR IN PART, WITHOUT WRITTEN PERMISSION OF C&amp;C POWER, INC. IS PROHIBITED. © 2016 C&amp;C POWER, INC.</small>						
				CHECKED:	DATE	
				ENGINEER:	DATE	
REF. DWG. No.				APPROVED:	DATE	TITLE: UBC52 BATTERY CABINET ULS24 1100A / 1100B 200AH BATTERY SOLUTION
FILE LOCATION:						DWG No. SHEET 2 OF 2 91452-SDM01-2 REV 1

REV: 1